

HDD Navigaton Map Update Process

Service Category Audio/Visual/Telematics

Section Navigation/Multi Info Display

Market USA

Lexus Supports
ASE Certification 

Applicability

| YEAR(S) | MODEL(S) | ADDITIONAL INFORMATION |
|-------------|---|------------------------|
| 2010 | ES350, GS350, GS450H, GS460, GX460, HS250H, IS F, IS250, IS250C, IS350, IS350C, RX350, RX450H, SC430 | |
| 2007 – 2010 | LS460 | |
| 2008 – 2010 | LS600H, LX570 | |

TSIB SUPERSESSION NOTICE

The information contained in this TSIB supersedes TSIB No. L-SB-0049-08.

- Applicability has been updated to include all 2010 model year Lexus vehicles.
- Parts Information table has been updated.
- Required Tools & Equipment table has been updated.

TSIB No. L-SB-0049-08 is Obsolete and any printed versions should be discarded. Be sure to review the entire content of this service bulletin before proceeding.

Introduction

Lexus models equipped with Hard Disk Drive (HDD) Navigation require a Special Service Tool and follow a unique process for updating map, points of interest, and system software. Instead of individual DVDs installed into the vehicle, all Map Data is uploaded directly to the HDD system.

Map Data will be released annually through the direct shipment of two Map Data DVDs to each dealership service manager. The annual Map Data release must then be installed onto the Navigation Update Tool. Individual map updates are then loaded into vehicles with special map security keys. These keys are available through the normal parts ordering system. Keys are loaded onto the Navigation Update Tool through a PC or TIS Techstream unit using software found on the Technical Information System (TIS).

Follow the procedures listed in this bulletin to:

HDD Navigaton Map Update Process

Introduction (Continued)

- Identify the current version of Map Data on the vehicle and on the Navigation Update Tool.
- Load Map Data onto the Navigation Update Tool.
- Load map security key(s) onto the Navigation Update Tool.
- Connect the Navigation Update Tool to the vehicle and update the Map/System Data to the latest version.

NOTE

- In order to perform the procedures outlined in this TSIB, you **MUST** have completed the setup procedure in TSIB No. [L-SB-0180-09](#), “HDD Navigation Program Setup”.
- Before performing this procedure, disconnect all other USB peripheral and external storage devices (i.e., USB thumb drives, hard drives, cameras, mice, etc.).
- For additional details, refer to the “[Navigation Update Tool Operating Manual](#)” on TIS (under *Diagnostic / Tools and Equipment / Navigation Update Tools* tabs, “Reference Documents”).

Warranty Information

| OP CODE | DESCRIPTION | TIME | OPF | T1 | T2 |
|---------|----------------------------|------|-----|----|----|
| N/A | Not Applicable to Warranty | – | – | – | – |

Parts Information

| PREVIOUS PART NUMBER | CURRENT PART NUMBER | PART NAME | QTY |
|----------------------|---------------------|--------------------------|-----|
| PT219-HDDMP-08 | PT219-HDDG5-09 | Generation 5 HDD Map Key | 1 |
| N/A | PT219-HDDG6-09 | Generation 6 HDD Map Key | 1 |

Required Tools & Equipment

| REQUIRED EQUIPMENT | PART NUMBER | QTY |
|-----------------------|-------------------|-----|
| Generation 5 HDD Disc | 00241-G5MAP-SSTDK | 1 |
| Generation 6 HDD Disc | 00241-G6MAP-SSTDK | 1 |

NOTE

For additional Map Discs, order from the Materials Distribution Center (MDC) through Dealer Daily – Dealer Support Materials Orders.

HDD Navigaton Map Update Process

Required Tools & Equipment (Continued)

| REQUIRED EQUIPMENT | SUPPLIER | PART NUMBER | QTY |
|--|----------|-------------|-----|
| TIS Techstream* NOTE: Software version 4.21.002 or later is required. | ADE | TSPKG1 | 1 |

* Essential SST.

NOTE
Additional TIS Techstream units may be ordered by calling Approved Dealer Equipment (ADE) at 1-800-368-6787.

| SPECIAL SERVICE TOOLS (SST'S) | PART NUMBER | QTY |
|-------------------------------|---------------------------------|-----|
| Navigation Update Tool* | 95079-00002-KIT | 1 |

* Essential SST.

NOTE
Additional SSTs may be ordered by calling 1-800-933-8335.

Version Verification

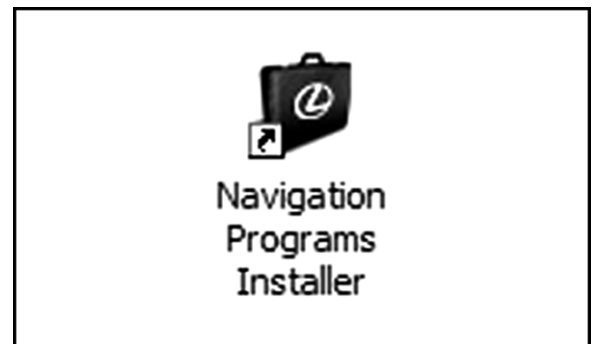
Checking for Map Data Version on Navigation Update Tool

1. Open the *Navigation Programs Installer*.

NOTE

- When properly installed, the Navigation Programs Installer icon will be found on the TIS Techstream desktop.
- If the application is NOT properly installed, refer to TSIB No. [L-SB-0180-09](#), "HDD Navigation Program Setup".

Figure 1.



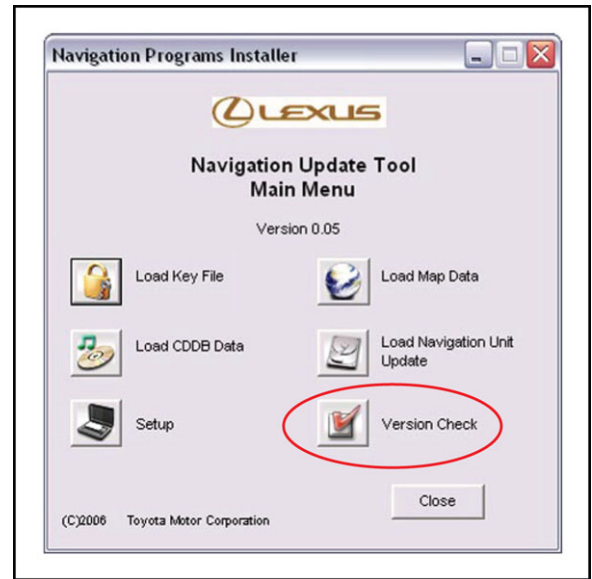
HDD Navigaton Map Update Process

Version Verification

Checking for Map Data Version on Navigation Update Tool (Continued)

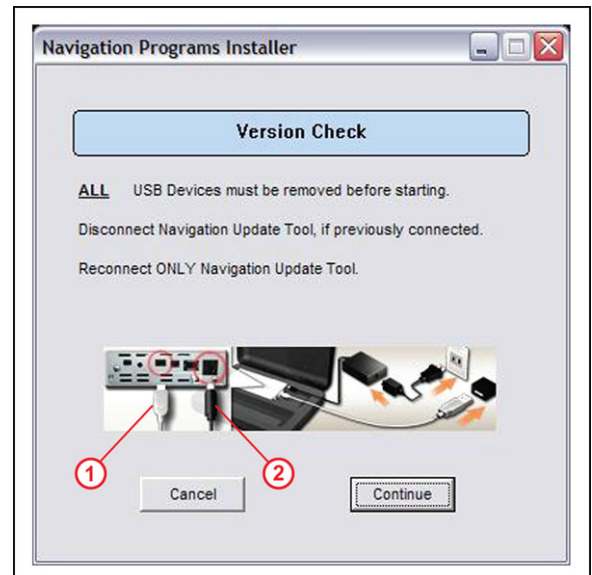
2. Click *Version Check* on the *Navigation Update Tool Main Menu*.

Figure 2.



3. Connect the Navigation Update Tool.
 - A. Make sure the USB cable is secured in both the PC and the Navigation Update Tool USB ports.
 - B. Confirm that the Navigation Update Tool is powered correctly.
 - C. Turn power ON.
 - D. Press *Continue*.

Figure 3.



| | |
|----------|---------------------|
| 1 | To PC |
| 2 | To A/C Power |

HDD Navigaton Map Update Process

Version Verification

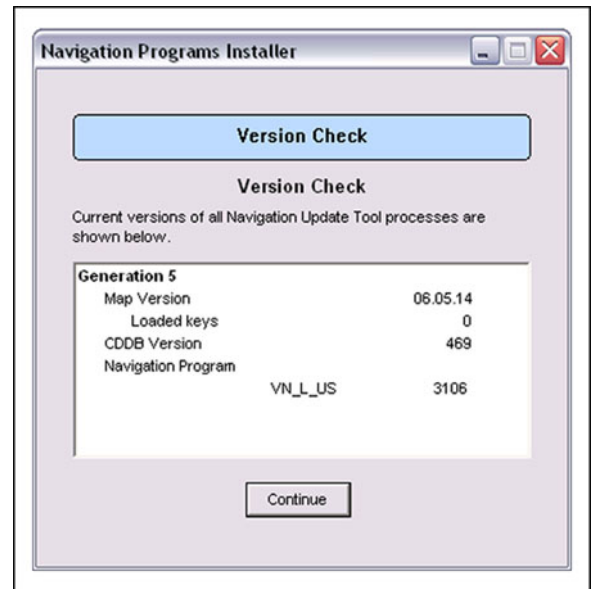
Checking for Map Data Version on Navigation Update Tool (Continued)

4. Compare the CDDB version with the CDDB version shown on TIS.

NOTE

- If the Map version on the Navigation Update Tool is the same as shown on the DVD, then go to the *“Security Key Load”* section in this TSIB.
- If the Map version on the Navigation Update Tool is NOT the same as shown on the DVD, then go to the *“Tool Load”* section in this TSIB.

Figure 4.



Checking Map Data Version on Vehicle HDD Navigation System

NOTE

Prior to connecting to the vehicle you **MUST** disconnect the Navigation Update Tool from the PC.

1. Turn vehicle ignition ON (engine OFF).

HDD Navigaton Map Update Process

Version Verification

Checking Map Data Version on Vehicle HDD Navigation System (Continued)

- From the multi-information display, press *I Agree*. **Figure 5.**



- Press the *MENU* button.

Figure 6.



- From the multi-information display, press *HDD Data*.

Figure 7.



HDD Navigaton Map Update Process

Version Verification

Checking Map Data Version on Vehicle HDD Navigation System (Continued)

5. Compare the Map Data version on the Navigation System to that on the Navigation Update Tool. **Figure 8.**

NOTE

- If the Map version on the Navigation System is the same as shown on the navigation update tool, then the vehicle does NOT need the update.
- If the Map version on the Navigation System is NOT the same as shown on the navigation update tool, then go to the "Tool Load" section in this TSIB.



Tool Load

NOTE

There are three separate processes used to update the Map Data on the vehicle:

- Loading the Map Data onto the Navigation Update Tool
- Loading the Map Data security key onto the Navigation Update Tool
- Loading the Map Data into the vehicle HDD Navigation System

If the Map version on the Navigation Update Tool is the same as shown on TIS, then go to the "Security Key Load" section in this TSIB.

If the Map version on the Navigation Update Tool is NOT the same as shown on TIS, then follow the instructions below.

Loading Map Data onto Navigation Update Tool

NOTE

Before performing this procedure, disconnect all other USB peripheral and external storage devices (i.e., USB thumb drives, hard drives, cameras, mice, etc.).

HDD Navigaton Map Update Process

Tool Load

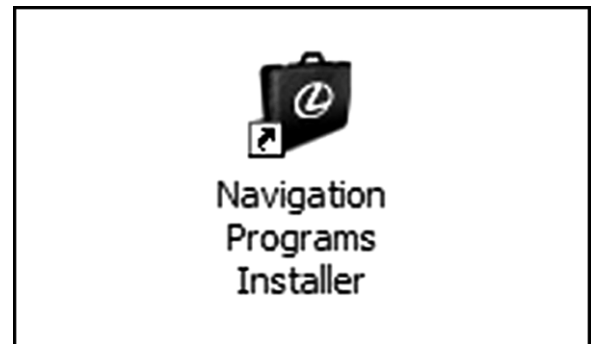
Loading Map Data onto Navigation Update Tool (Continued)

1. Open the *Navigation Programs Installer*.

NOTE

- When properly installed, the Navigation Programs Installer icon will be found on the TIS Techstream desktop.
- If the application is NOT properly installed, refer to TSIB No. [L-SB-0180-09](#), "HDD Navigation Program Setup".

Figure 9.



2. Select *Load Map Data* on the *Navigation Update Tool Main Menu*.

Figure 10.



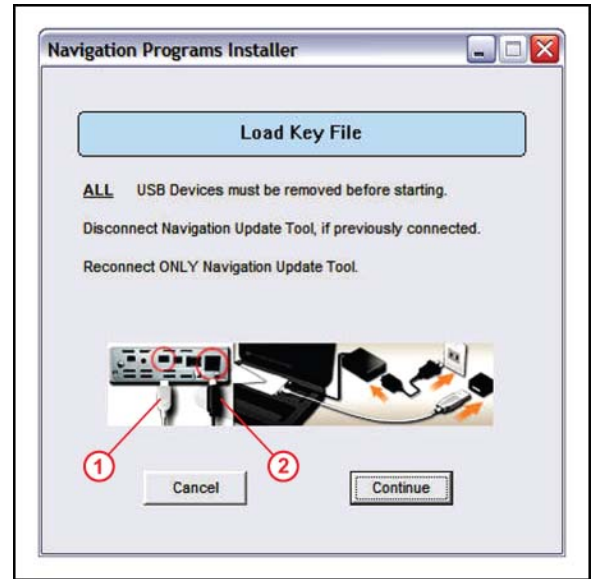
HDD Navigaton Map Update Process

Tool Load

Loading Map Data onto Navigation Update Tool (Continued)

3. Connect the Navigation Update Tool.
 - A. Make sure the USB cable is secured in both the PC and the Navigation Update Tool USB ports.
 - B. Confirm that the Navigation Update Tool is powered correctly.
 - C. Turn power ON.
 - D. Press *Continue*.

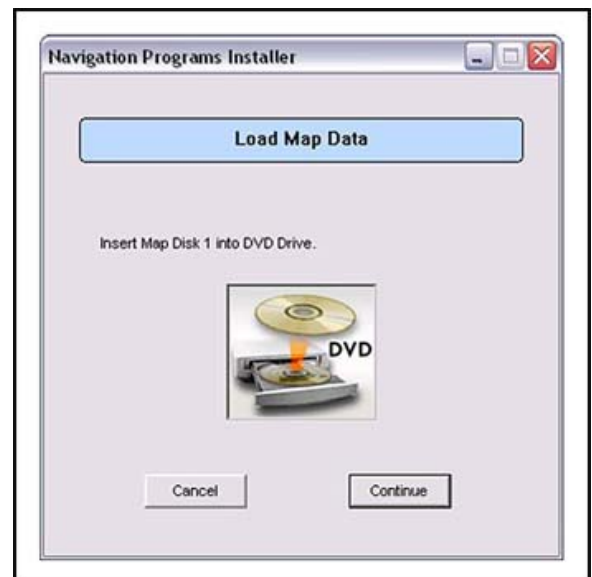
Figure 11.



| | |
|---|--------------|
| 1 | To PC |
| 2 | To A/C Power |

4. Insert Map Disk 1 into the CD/DVD-ROM drive and press *Continue*.

Figure 12.



HDD Navigaton Map Update Process

Tool Load

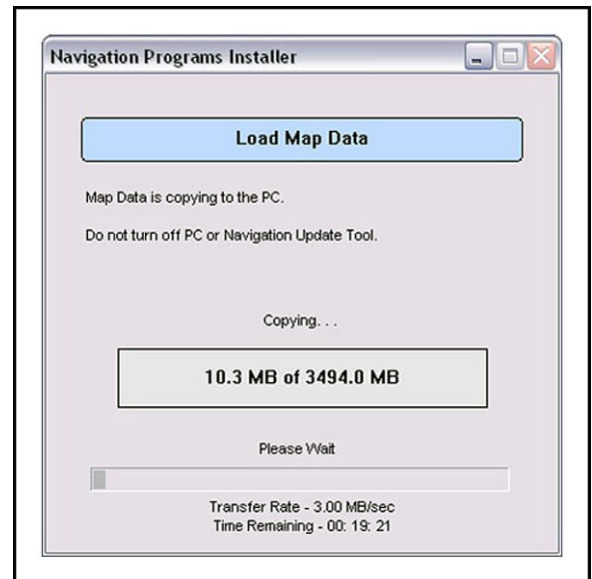
Loading Map Data onto Navigation Update Tool (Continued)

5. Allow Map Data to copy onto the PC hard drive (requires about 30 minutes).

If necessary:

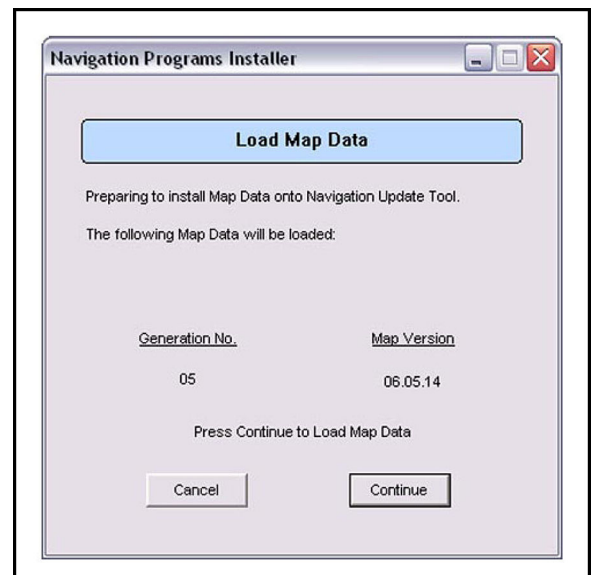
- Insert the additional Map Disk as instructed into the CD/DVD-ROM drive.
- Allow the additional Map Data to copy onto the PC hard drive (requires about 30 minutes).

Figure 13.



6. Verify the correct version of Map data to load onto the Navigation Update Tool.

Figure 14.



HDD Navigaton Map Update Process

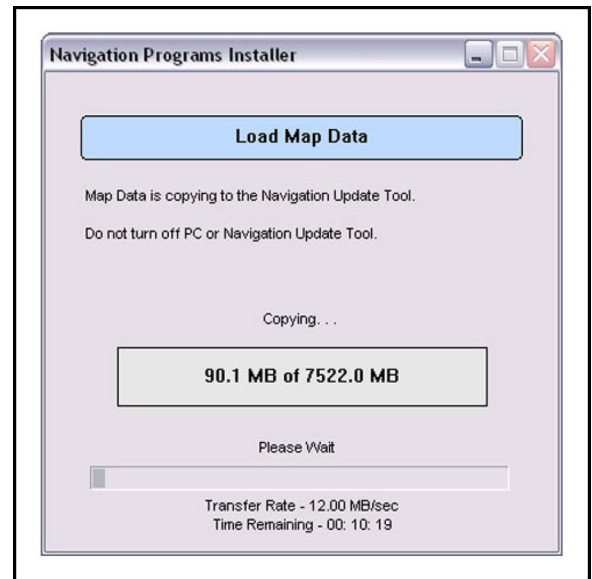
Tool Load

Loading Map Data onto Navigation Update Tool (Continued)

- Click *Continue* to load Map Data onto the Navigation Update Tool.

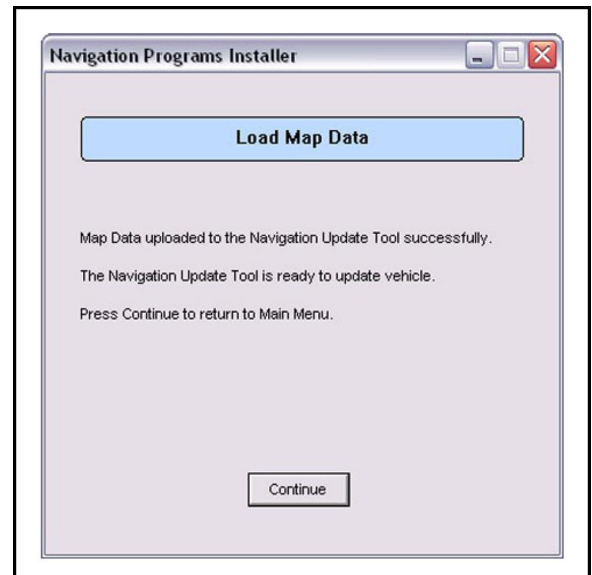
Map Data will then copy to the Navigation Update Tool (requires about 15 minutes).

Figure 15.



- Verify the Map Data is loaded onto the Navigation Update Tool and can now be used to update the vehicle.

Figure 16.



HDD Navigaton Map Update Process

Security Key Load

NOTE

- In order to load the Map Data onto the vehicle's Navigation System, you **MUST** load a security key **EACH** time.
- The Navigation Update Tool will hold up to ten security keys. One key is required per vehicle update.
- Storing keys on the Navigation Update Tool is **NOT** recommended.
- Map Data **MUST** be loaded onto the Navigation Update Tool before a Key File can be loaded.
- Before performing this procedure, disconnect all other USB peripheral and external storage devices (i.e., USB thumb drives, hard drives, cameras, mice, etc.).

1. Open the *Navigation Programs Installer*.

Figure 17.



2. Select *Load Key File* on the *Navigation Update Tool Main Menu*.

Figure 18.



HDD Navigaton Map Update Process

Security Key Load (Continued)

3. Connect the Navigation Update Tool.
 - A. Make sure the USB cable is secured in both the PC and the Navigation Update Tool USB ports.
 - B. Confirm that the Navigation Update Tool is powered correctly.
 - C. Turn power ON.
 - D. Press *Continue*.

Figure 19.



| | |
|---|--------------|
| 1 | To PC |
| 2 | To A/C Power |

4. Connect USB Key File and press *Continue*.

Figure 20.

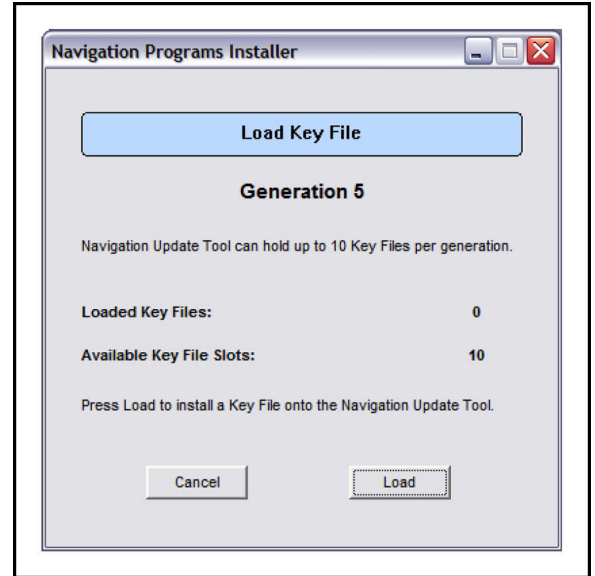


HDD Navigaton Map Update Process

Security Key Load (Continued)

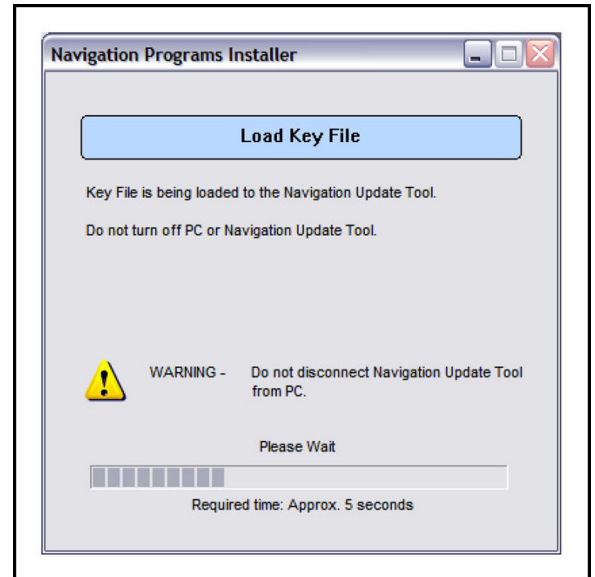
5. Click *Load* to continue.

Figure 21.



6. Allow the Key File to copy onto the Navigation Update Tool (requires about 5 seconds).

Figure 22.



HDD Navigaton Map Update Process

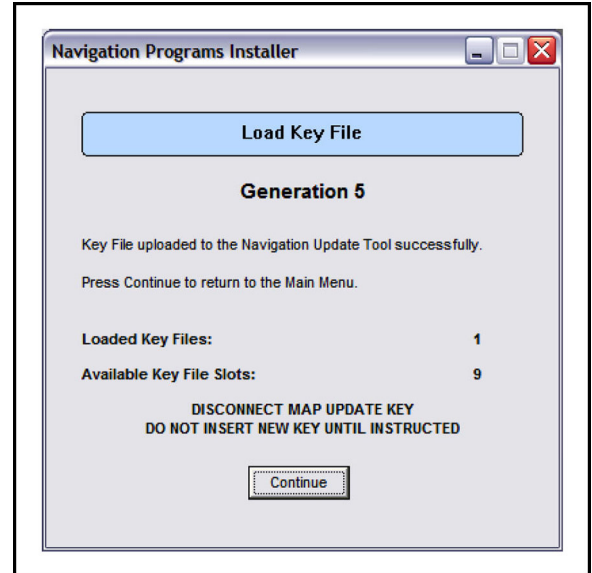
Security Key Load (Continued)

7. Verify the Key File is loaded onto the Navigation Update Tool and can now be used to update the vehicle.

NOTE

- The Navigation Update Tool will hold up to ten security keys. One key is required per vehicle update.
- Storing keys on the Navigation Update Tool is NOT recommended.

Figure 23.



Vehicle Loading

Loading Map Data onto Vehicle HDD Navigation System

NOTE

- The Map Data security key **MUST** be loaded onto the Navigation Update Tool before Map Data can be loaded to the vehicle.
- Prior to connecting to the vehicle you **MUST** disconnect the Navigation Update Tool from the PC.
- Connect the battery charger to the vehicle prior to beginning the process to ensure constant battery voltage.

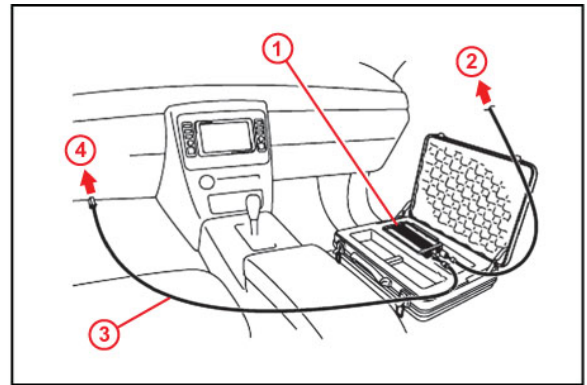
HDD Navigaton Map Update Process

Vehicle Loading

Loading Map Data onto Vehicle HDD Navigation System (Continued)

1. Connect the Navigation Update Tool to the vehicle.
 - A. Make sure the IEEE1394 cable is secured in both the Navigation Update Tool and the vehicle connector.
 - B. Confirm the Navigation Update Tool is powered correctly.

Figure 24.



| | |
|---|----------------------------------|
| 1 | Navigation Update Tool |
| 2 | To A/C Adaptor Power Supply |
| 3 | IEEE 1394 Vehicle Exchange Cable |
| 4 | To Vehicle-Side Connection Point |

2. Turn vehicle ignition ON (engine OFF).
3. From the multi-information display, press / Agree.

Figure 25.



HDD Navigaton Map Update Process

Vehicle Loading

Loading Map Data onto Vehicle HDD Navigation System (Continued)

4. Press the "MENU" button.

Figure 26.



5. From the multi-information display, press *HDD Data*.

Figure 27.



6. Press *Map Data Update*.

Figure 28.



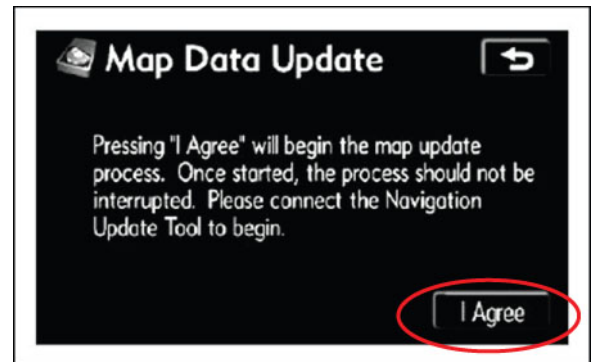
HDD Navigaton Map Update Process

Vehicle Loading

Loading Map Data onto Vehicle HDD Navigation System (Continued)

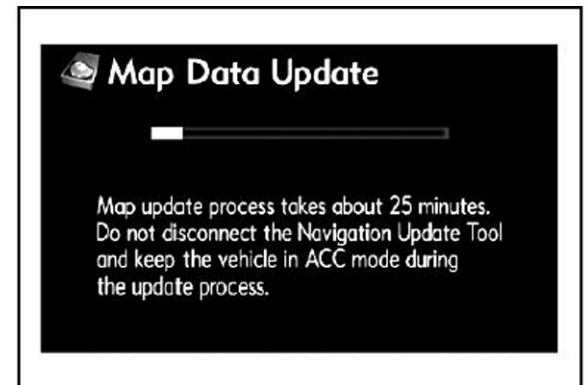
7. Press *I Agree*.

Figure 29.



8. Allow Map Data to copy (requires about 25 minutes).

Figure 30.



9. Press *OK*.

Figure 31.



10. Disconnect the Navigation Update Tool from the vehicle.