

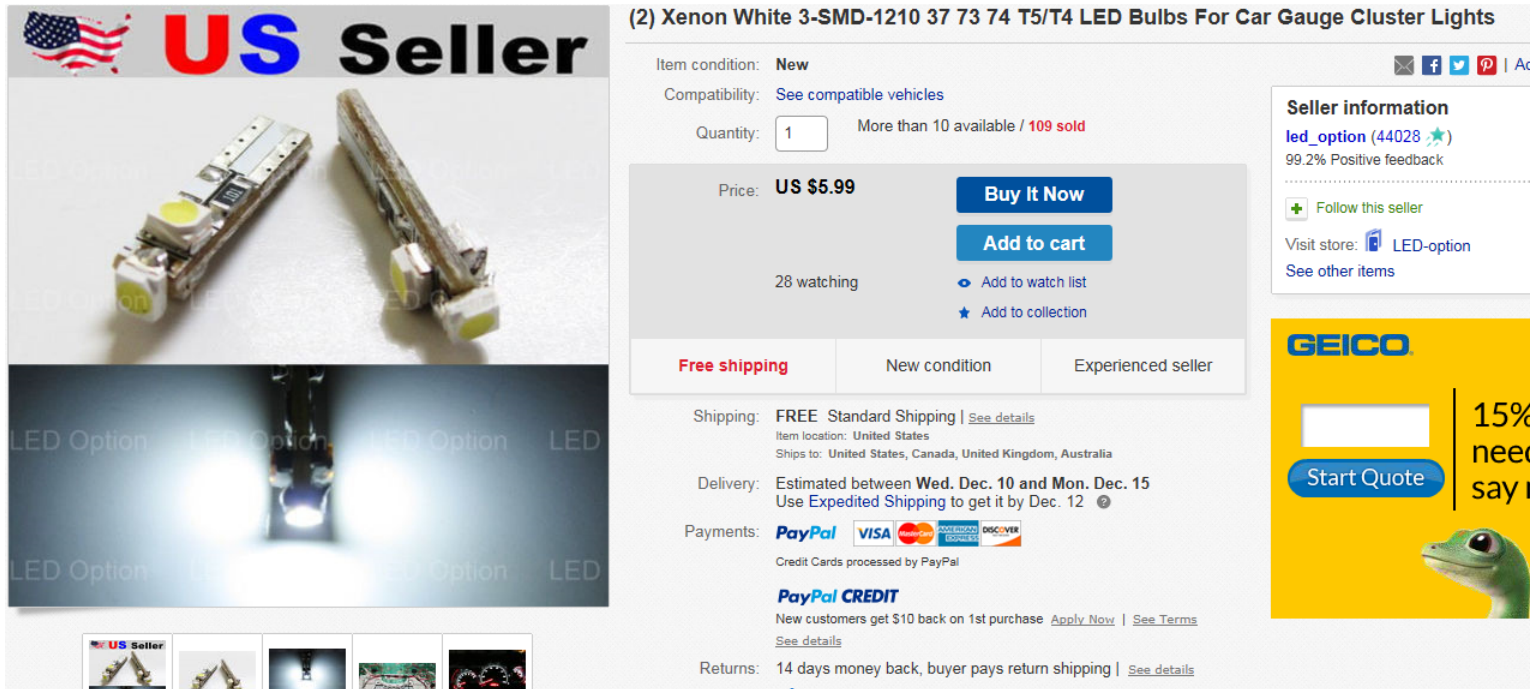
Activate parking brake, apply pressure on the brake pedal and turn starting switch to ACC position (Don't start engine). Shift lever to neutral and turn key to off position. (With tranny in neutral you will not be able to remove key from the ignition switch).

You may now proceed by removing the shift knob by turning it in the counterclockwise direction. Remove heater switch and unplug harness. Remove console/cup holder plate and unplug cigarette lighter harness, pop out radio door switch and set garnish aside.

You can now proceed to remove the shifter assembly by pulling the back of the shifter behind the Power & VSC switches upward. Play close attention, there are several clips holding the shifter plate secure to the housing. Take care you do not break off the plastic clips. Once the top plate is free from the housing you will need to twist the shifter light housing counterclockwise 90 degrees to dislodge the light.

You can now pull on the bulb covered with the green membrane which looks like a Christmas Light free from the housing. When you plug an LED light into the housing please note LED lights are polarized. Best way to ensure you install the LED light in the correct orientation is by having the park lights in the on position. You have a 50/50 shot in getting it right the first time. I purchased the LEDs from Ebay.

**Xenon White 3-SMD-1210 lights. Refer to the photo below for the details.**



**US Seller**

### (2) Xenon White 3-SMD-1210 37 73 74 T5/T4 LED Bulbs For Car Gauge Cluster Lights

Item condition: **New**

Compatibility: [See compatible vehicles](#)

Quantity:  More than 10 available / 109 sold

Price: **US \$5.99** [Buy It Now](#) [Add to cart](#)

28 watching [Add to watch list](#) [Add to collection](#)

**Free shipping** | New condition | Experienced seller

Shipping: **FREE** Standard Shipping | [See details](#)  
Item location: United States  
Ships to: United States, Canada, United Kingdom, Australia

Delivery: Estimated between **Wed. Dec. 10 and Mon. Dec. 15**  
Use **Expedited Shipping** to get it by Dec. 12

Payments: [PayPal](#) [VISA](#) [MasterCard](#) [AMERICAN EXPRESS](#) [DISCOVER](#)  
Credit Cards processed by PayPal

**PayPal CREDIT**  
New customers get \$10 back on 1st purchase [Apply Now](#) | [See Terms](#)  
[See details](#)

Returns: 14 days money back, buyer pays return shipping | [See details](#)

**GEICO** | 15% need say n | [Start Quote](#)

The power switch requires a 10mm T4 Neo Wedge LED which I purchased from Ebay. The base for the light is 10mm.

The LED is also polarized, so you need to follow the same process as the shifter light.



## 6x White T4/T4.2 Neo Wedge LED Bulb Cluster Instrument Dash Climate Base Lights

Item condition: **New**

| [Add to watch list](#)

Quantity:  More than 10 available / 97 sold

Price: **US \$5.99**

[Buy It Now](#)

[Add to cart](#)

52 watching

[Add to watch list](#)

[Add to collection](#)

### Seller information

[ledkingdom-us](#) (11666)

99.6% Positive feedback



[Follow this seller](#)

Visit store: [ledkingdomUSA](#)

[See other items](#)

**Free shipping**

Extended holiday returns

New condition

Shipping: **FREE** Standard Shipping | [See details](#)

Item location: Bellevue, Washington, United States

Ships to: United States, Canada, Mexico | [See exclusions](#)

Delivery: Estimated on or before **Sat. Dec. 13** to 91741

Payments: [PayPal](#)

Credit Cards processed by PayPal

**PayPal CREDIT**

New customers get \$10 back on 1st purchase | [Apply Now](#) | [See Terms](#)

[See details](#)

Returns: Extended holiday returns until Jan. 31, buyer pays return shipping |

[See details](#)

Guarantee: **MONEY BACK GUARANTEE** | [See details](#)

**GEICO**

ZIP

[Start Quote](#)

15%... need I say more?

### Instructions to remove switch:

In order to replace the bulb in both switches, you need to follow these instructions.

Remove shifter top plate.

Remove coin latch by turning shifter cover plate upside-down.

Use a small narrow needle nose pliers to compress clips located under the latch. Latch will drop free.

Take precautions so you don't lose the spring.

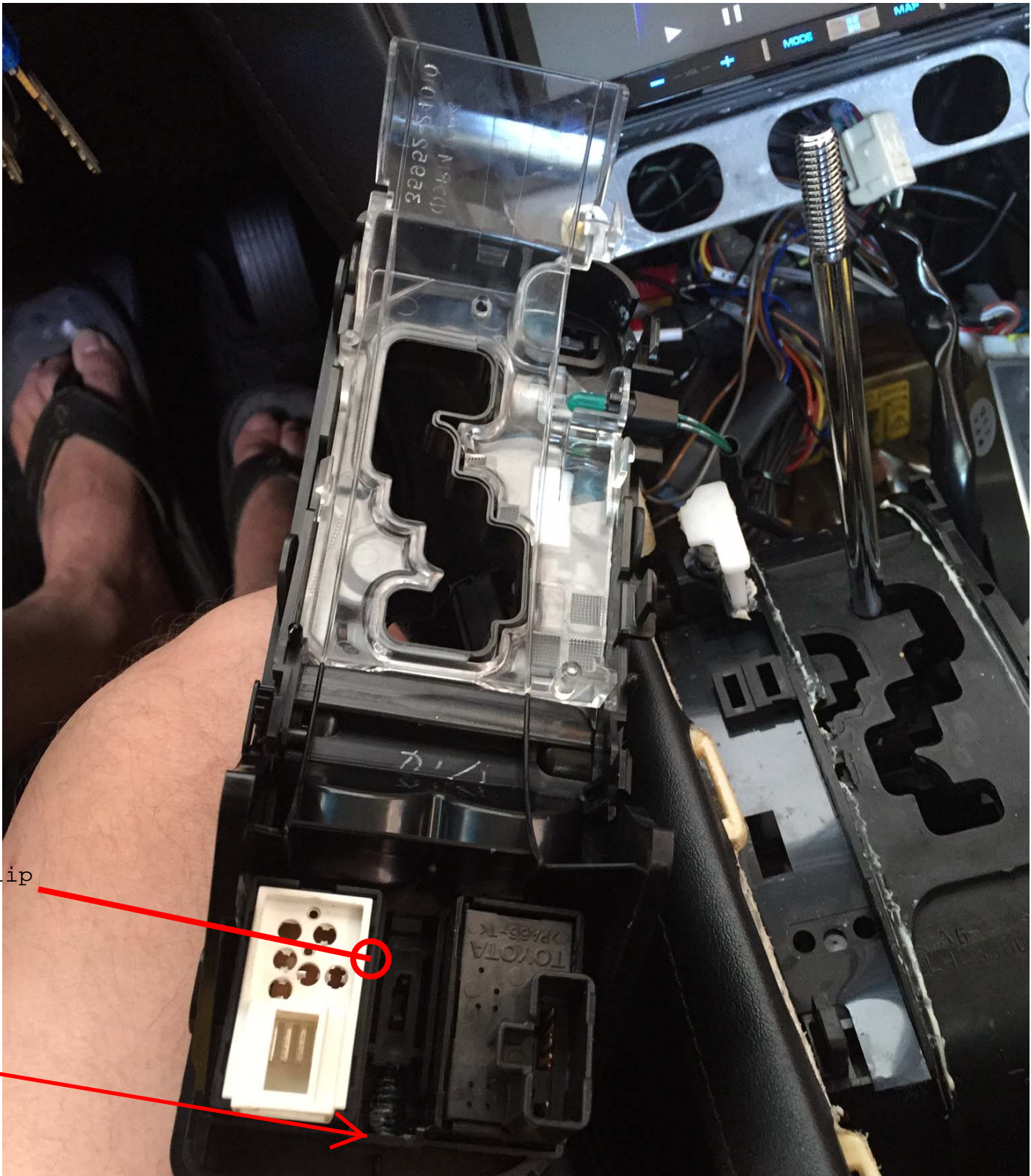
You can now carefully unclip the clips on the perimeter of the top plate. Look closely and you will notice the clips are in black plastic.

Pull top cover plate off top shifter housing.

Refer to pictures on next page.

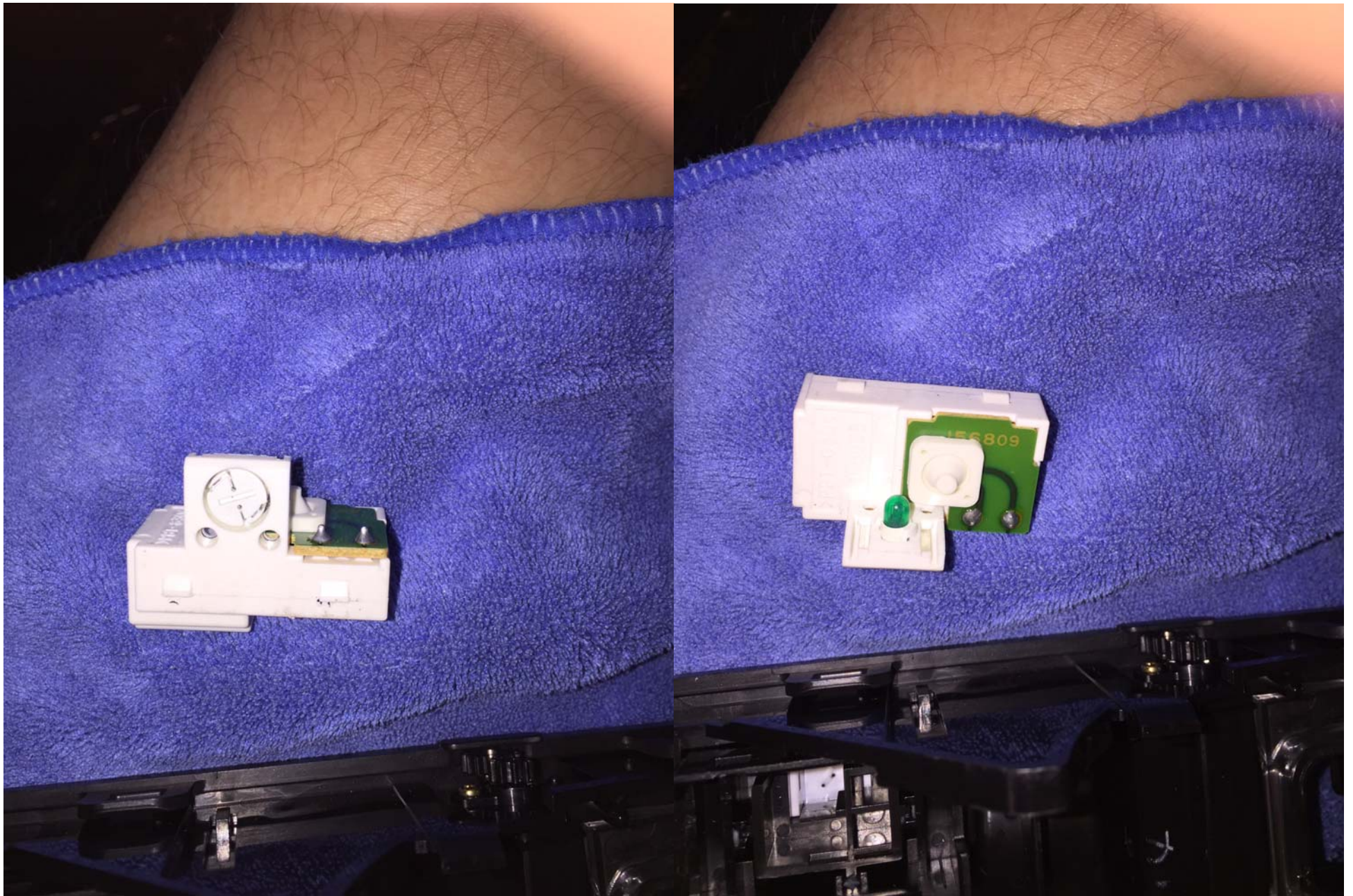


To remove switches from housing shifter plate first remove the coin latch from the underside as this will allow for the room required to pop/dislodge the switches from the shifter housing plate. The switches must be out in order to have access to the **T3 - 8mm light (VSC)** and **T4 - 10mm light (Power)**. The replacement LED lights are referred to as Neo Wedge LED Bulb Cluster. You will need to follow the same process as the shift LED since these LEDs are also polarized. TESTING -Plug switch to harness and turn on parking lights. Trial fit the bulb cluster; here you also have a 50/50 shot to get it right. Light doesn't come on, remove cluster and turn it 180 degree and insert in opening using a small blade screw driver.



Coin latch clip

Spring



**T3 Neo Wedge 1-1210 SMD LED lights have a base size of 8mm which is required for the VSC switch.**

FREE SHIPPING ON ORDERS OVER \$50 See all eligible items

### 2x T3 Neo Wedge 1-1210 SMD SMT LED White Cluster Instrument Dash Climate Bulb

Item condition: **New**

Facebook Twitter Pinterest | Add to watch list

Quantity:  More than 10 available / 319 sold

Price: **US \$3.75**

**Buy It Now**

**Add to cart**

75 watching

[Add to watch list](#)

[Add to collection](#)

**60-day returns**

New condition

100% positive feedback

Shipping: **\$1.75** Standard Shipping | [See details](#)

Item location: San Jose, California, United States

Ships to: United States and many other countries | [See details](#)

Delivery: Estimated on or before **Fri. Dec. 12** to 91741

#### Seller information

**snb331** (3097 ★)

100% Positive feedback

[Follow this seller](#)

[See other items](#)

