

2010 Lexus RX350

Submodel: | Engine Type: V6 | Liters: 3.5

Fuel Delivery: FI | Fuel: GAS

Last Modified: 2010-12-6 00:00:00

Model Year: 2010

Engine Family: 2GR-FE

Title: SUPPLEMENTAL RESTRAINT SYSTEMS: STEERING PAD: REMOVAL (2010 RX350 to 08/2009)

A

Model: RX350

Body Type:

From:200812

Doc ID: RM000000UW8043X

VDS: BK1BA ZK1BA

REMOVAL

1. PRECAUTION

CAUTION:

Be sure to read Precaution thoroughly before servicing Click here for more information..

w/ Navigation System for HDD:

NOTICE:

After the engine switch is turned off, the display and navigation module display (HDD navigation system) records various types of memory and settings. As a result, after turning the engine switch off, make sure to wait at least 60 seconds before disconnecting the cable from the negative (-) battery terminal.

2. DISCONNECT CABLE FROM NEGATIVE BATTERY TERMINAL

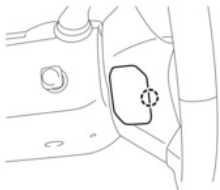
CAUTION:

Wait at least 90 seconds after disconnecting the cable from the negative (-) battery terminal to disable the SRS system.

NOTICE:

When disconnecting the cable, some systems need to be initialized after the cable is reconnected Click here for more information..

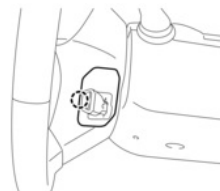
3. REMOVE LOWER NO. 3 STEERING WHEEL COVER



c

(a) Using a screwdriver with its tip wrapped with protective tape, disengage the claw to remove the lower No. 3 steering wheel cover.

4. REMOVE LOWER NO. 2 STEERING WHEEL COVER



c

(a) Using a screwdriver with its tip wrapped with protective tape, disengage the claw to remove the lower No. 2 steering wheel cover.

5. REMOVE STEERING PAD

CAUTION:

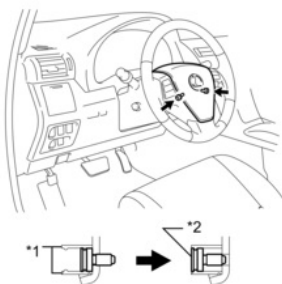
When storing the steering pad, keep the airbag deployment side facing upward.

(a) Check that the engine switch is off.

(b) Check that the cable is disconnected from the negative (-) battery terminal.

CAUTION:

Wait at least 90 seconds after disconnecting the cable from the negative (-) battery terminal to disable the SRS system.

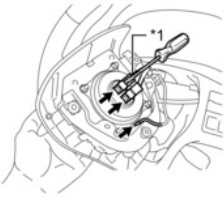


c

(c) Using a T30 "TORX" socket wrench, loosen the 2 "TORX" screws until the groove along the screw circumference catches on the screw case.

Text in Illustration

- | | |
|----|--------------|
| *1 | Screw Case |
| *2 | "TORX" Screw |



c

(d) Pull out the steering pad from the steering wheel assembly and support the steering pad with one hand as shown in the illustration.

NOTICE:

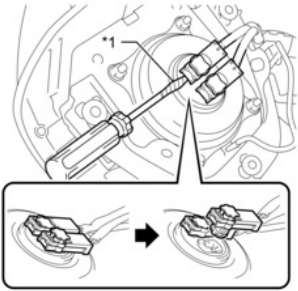
When removing the steering pad, do not pull the airbag wire harness.

(e) Using a screwdriver with its tip wrapped with protective tape, release the airbag connector locks.

Text in Illustration

*1	Protective Tape
----	-----------------

(f) Disconnect the horn connector from the steering pad.



c

(g) Disconnect the airbag connectors to remove the steering pad as shown in the illustration.

Text in Illustration

*1	Protective Tape
----	-----------------

NOTICE:

When disconnecting any airbag connector, take care not to damage the airbag wire harness.