



**2003 Lexus RX 330
Custom Board C795-630
Installation Instructions**

Each ATS Design Running Board fitment has a specific Bracket Kit, which coincides with the specific vehicle. Make sure your kit coincides with your vehicle. Read all instructions thoroughly before you begin installing the running boards and brackets. Prefit all pieces and check the hardware list to be sure all the parts are included before beginning.

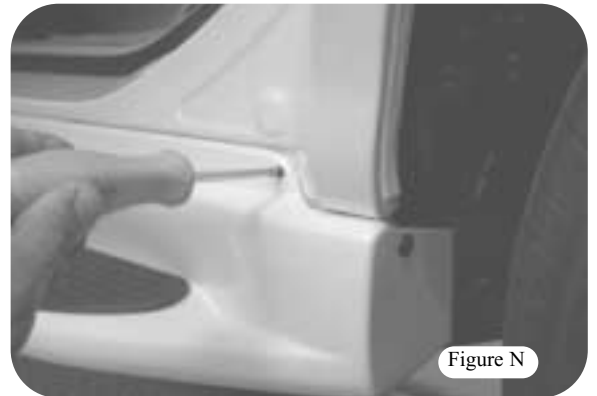
Hardware Kit For Lexus RX330

Item	Quantity	Description	Part Number
1	12	5/16-18x3/4 Hex Head Bolts GR5 Zinc	BLT012
2	12	1/4-14 3/4 Hex Head Tek Screw	SCW019
3	28	5/16 SAE Flat Washer Zinc	WAS006
4	28	5/16x18 Nylock Nut Plated	NUT010
5	16	5/16-18x3/4 GR5 Square Head Bolt Zinc	BLT013
6	2	1/2-13 Zinc Hex Head Nut	NUT033
7	2	1/2 MED Split Zinc Washer	WAS001
8	1	3M Tape .060x5/8x20FT (Step Pad)	TAP008
9	1	3M Tape .060x5/8x12FT (Running Board)	TAP008
10	2	3M 4298 Adhesion Promoter	THR013
11	6	Front/ Middle Main (L) Brackets	BRK-72F
12	2	Rear Main (S) Brackets	BRK-72R
13	6	Pinch Weld Brackets	BRK-72PW
14	2	Anchor Bolts	BRK-72AB
15	2	M8- 1.25x25 Bolts (For use with Sports Model Edition)	BLT001
16	6	SAE 3/8 x7/8 OD, 1/8 THK (For use w/ Sports Model)	WAS064

14. Slide the 5/16" square head bolts into the aluminum slots (4 inner slots and 4 outer slots). Open the doors of the vehicle in order to position the running board over the bracket slots. Pass the bolts through the slots and attach with the SAE washers and 5/16" nylock nuts. At this time leave loose.

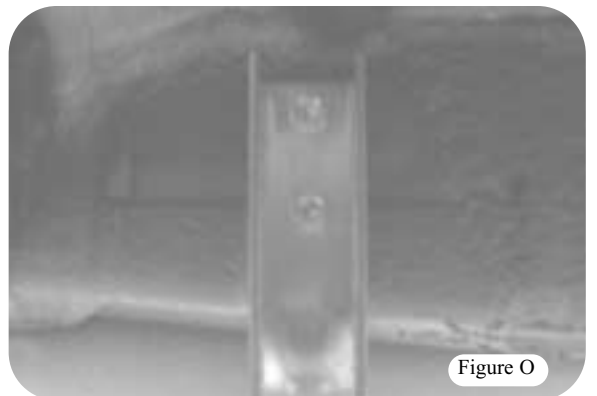
15. Adjust the running board to the vehicle and install the (2) factory Philip screws (saved from step 6) in the running board apron behind the door of the vehicle.

NOTE: at this time DO NOT pull 3M tape lining
See Figure N



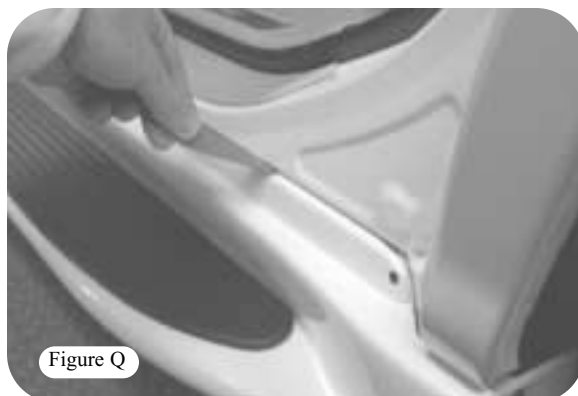
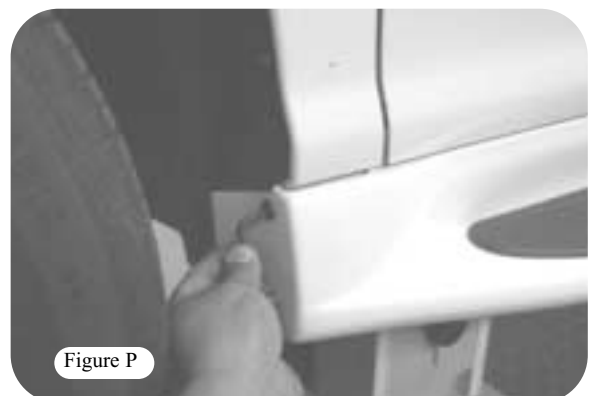
16. After the running board is in position tighten up all the bracket hardware. Under the vehicle, install the TEK screws through the main front middle brackets and into the frame rail. Use one two TEK screws per bracket.

See Figure O



17. Once the running board is secured in place, install the (2) factory Alan head screws in the pre-drilled holes on the running board's wheel well apron. Finally, peel back the remaining 3M tape lining and secure board. Make sure to tighten all of the remaining hardware.

See Figure P & Q



11. Install the anchor bolt in the tow hook hole of the vehicle for the rear bracket location. Leave the bracket loose at this time.

See Figures J & K



12. Prep the backside of the tapeline on the running board with the cleaner/solvent. Next apply the 3M-adhesion promoter to the tapeline and let it dry. After it is dry, install the 3M mounting tape to the tapeline. (NOTE use the adhesion promoter for best results)

See Figure L

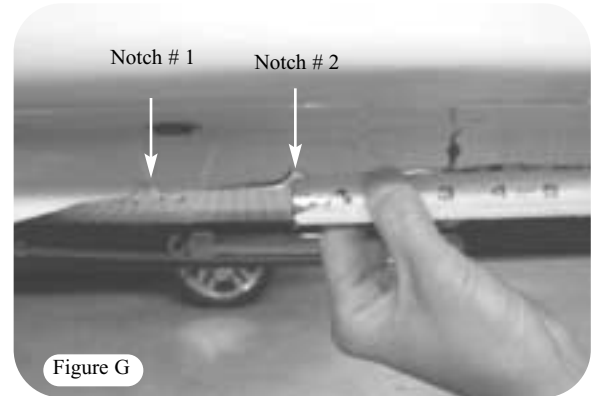


13. After you are done prepping the running board, peel back the 3M mounting tape lining at the ends of the running board and fold over to face the running board. Next clean the area on the vehicle where the 3M mounting tape will adhere.

See Figure M

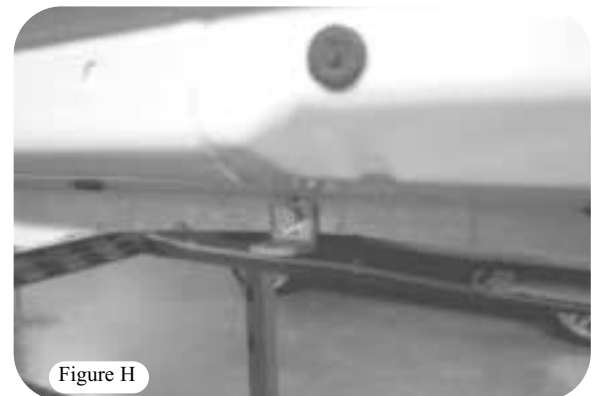


7. Use the first jack point as your locator. Measure back from the second notch on the first jack point of the vehicle's pinch weld to mark the bracket location. (NOTE: measurements are different from side to side of the vehicle.) Suggested locations are driver side 3", 17", and 29". Passenger side 3", 20-½" and 38 ½". Use the pinch weld bracket to mark the center of the hole. See Figure G.



8. Drill 5/16" pinch weld holes in all four marked locations in the pinch weld. NOTE: Drill each hole in the pinch weld so that it is parallel to the bottom of the pinch weld.

9. Using the 5/16 hex head bolts, washers and nylock nuts attach the pinch weld brackets to the previously drilled Pinch Weld holes. See Figure H



10. Hang the main front middle bracket using the 5/16 Hex head bolt, washer and nylock nut. Leave the brackets loose at this time.

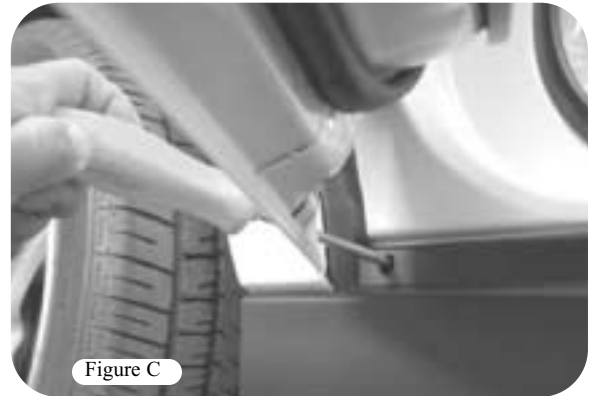
NOTE: If you are working on the Sports Model Edition, remove the air ride canister and space the canister away from the vehicle using the bolt and washer supplied in hardware kit (BLT001 & WAS064).

See Figure I.



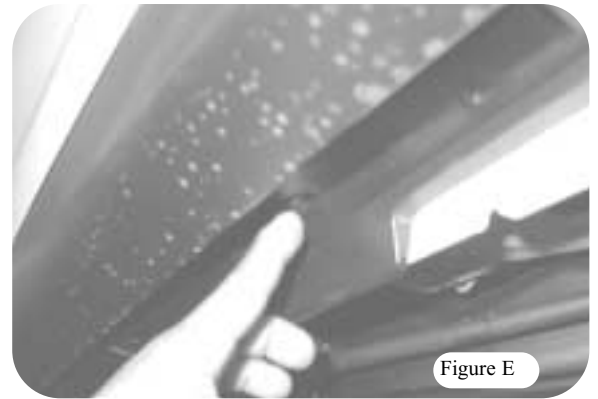
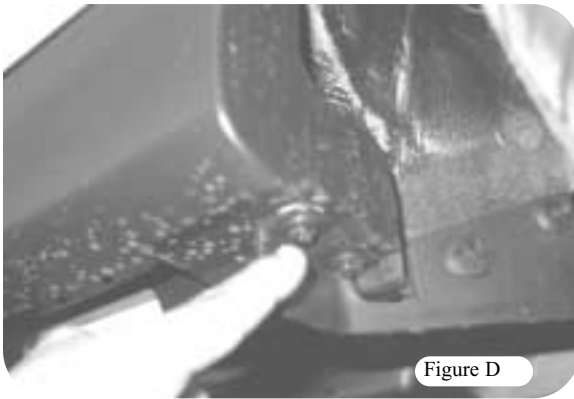
4. Open both doors on the side of the vehicle that you are working on. Behind the door you will find 2 phillips head screws. Remove the screws and save them.

See Figure C



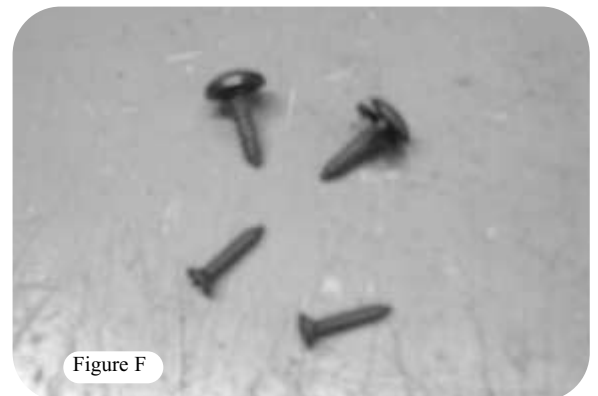
5. On the underside of the body cladding, remove the (2) hex head phillips screws and (7) push pins.

See Figures D & E



6. Gently pull on the lower body cladding and remove it. NOTE: Save the factory hardware from steps 3 & 4.

See Figure F



PAINT PREPARATION

The ATS Design Running Boards can be painted to match the vehicle before installation. For best results follow the following paint preparation procedure.

- A. Scuff the areas to be painted using the red Scotchbrite and Release Agent Cleaner/Solvent (Dupont #2319 or equivalent).
- B. Blend all trim lines and edges using a Dual-Action sander and #220 paper.
- C. Fill all the holes and imperfections with spot putty.
- D. Wet sand putty areas with #400 paper.
- E. Wet sand complete part with #500 paper.
- F. Clean the part **AGAIN** using the release Agent Cleaner/Solvent (Dupont #2319 or equivalent). Also clean the areas that will receive the 3M mounting tape.
- G. Mask all areas that will receive the 3M mounting tape.
- H. Apply 1-2 medium coats of flexible primer/sealer.
- I. Apply the base coat.
- J. Apply the clear coat with flex agent additive. Air dry over night. **DO NOT BAKE IN OVEN.**

BRACKET INSTALLATION

1. Layout the hardware and bracket kit and make sure you have a complete set.

2. In order to install the custom running board you will need to remove the lower body cladding on the vehicle.

See Figure A



3. To remove the cladding, locate the two Allen Head Screws on the bottom of each end of the body cladding. Save the screws they will be needed later on.

See Figure B

