



Towing Capacity:  
 Max. Braked Capacity 1500kg  
 Max. Unbraked Capacity 500kg  
 Max. Static Ball Load 150kg

**RX330**  
 2003 Production Onwards  
**Towbar**  
 Installation Instructions

Accessory Part No. PZQ64-48010

Installation Time: Approx. 60mins

**Place these instructions in vehicle's glovebox after installation is complete.**

**Parts List**

**Important: Check contents of kit before commencing fitment and report any discrepancies.**

Item	Component Name	Service Part No	Qty
1	LH Chassis Bracket		1
2	RH Chassis Bracket		1
3	Spacer Plate		1
4	M10 x 1.25 x 35mm Bolt GR 8.8		10
5	M10 Spring Washers		10
6	M10 Flat Washers		10
7	M12 x 1.25 x 35mm Button Socket Screw GR 8.8		2
8	M12 x 1.25 x 40mm Bolt GR 8.8		4
9	M12 Spring Washers		6
10	M12 Flat Washers		10
11	M12 x 1.25 Nut		6
12	5/8" UNC x 3-1/2" Pull Pin Bolt GR 8	PQZ64-48010FK	1
13	5/8" UNC Nut		1
14	R-Clip		1
15	3/8" UNC 1-1/4" Bolt GR 5		1
16	3/8" UNC Nut		1
17	M6 x 1 x 16mm Bolt GR 8.8		2
18	M6 x 1 Nyloc Nut		2
19	Plastic Hitchbox Collar		1
20	Rubber Block Mount		1
21	Wireloom Bracket		1
22	Load Rating Label		1
23	Tongue	PZQ63-48010	1
24	Towbar	PZQ64-48010	1



Item 1



Item 2



Item 3



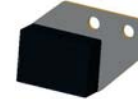
Item 12



Item 14



Item 19



Item 20



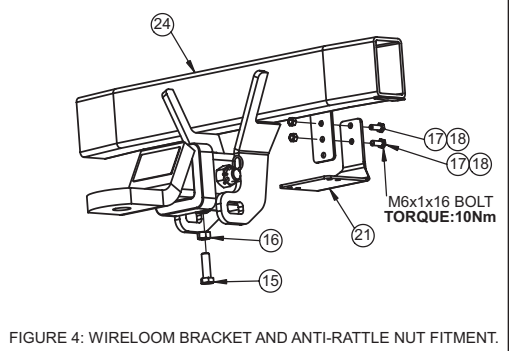
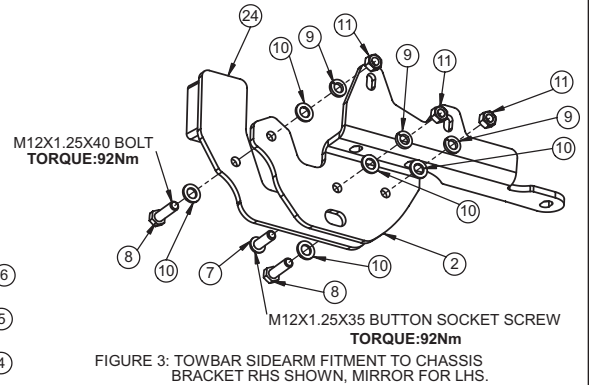
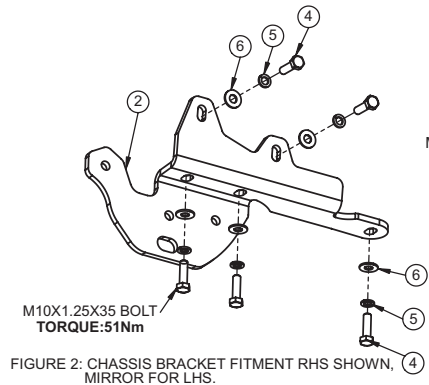
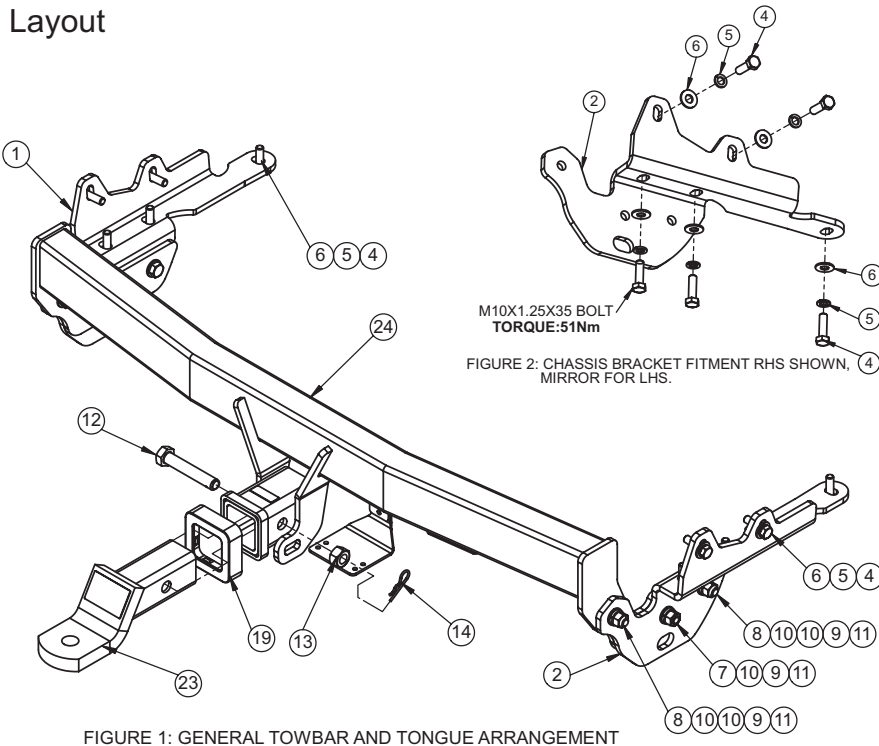
Item 21



Item 22

**IMPORTANT TOWING INFORMATION**  
 TOWBAR PART NO. PZQ64-48010  
 TORQUE MUST NOT EXCEED 92Nm  
 A load limiting device is required when towing a trailer with a combined loaded drawbar mass that may be in excess of the rated towbar mass.  
 MAX. TOWBAR CAP. 1500kg  
 MAX. DOWNLOAD 150kg  
 FOR TOWING PURPOSES ONLY.

**Layout**



- Tools Required:**
- Metric socket and spanners
  - Torque wrench
  - Sharp knife
  - 20mm hole saw
  - Electric drill
  - Deburring tool
  - Allen keys
  - Phillips head screwdriver

- Attention:**
- Firmly tighten the anti-rattle bolt (item 15) and lock into position with locking nut (item 16) to prevent any tongue rattle while driving.
  - This Towbar offers two possible positions to locate the wireloom bracket (item 21). The final position will be determined by the desired trailer harness height and location.

Note: Item numbers refer to parts described in the Layout diagrams and Parts List.



**Diagram 1: Remove the Plastic trim.**

**Check contents of kit before commencing fitment.**

1. Open the boot lid and expose the plastic well located underneath the false floor. Remove the two plastic screws located on the LH and RH sides to remove the plastic well. Also remove the plastic trim at the base of door aperture. Refer to Diagram 1.



**Diagram 2: Remove screws from the lower edge of the rear bumper.**

2. Locate and remove the plastic and metals screws around the lower edge of the rear bumper. Refer to Diagram 2.



**Diagram 3: Remove plastic plugs.**

3. Locate and remove the plastic plugs located within the rear LH and RH side wheel arches. Refer to Diagram3.



**Diagram 4: Remove the metal screws.**

4. Remove the rear mud-flaps and the screws located behind the plastic wheel arch, that secures the top of the bumper to the vehicle. Refer to Diagram 4.



**Diagram 5: Remove screws and nuts.**

5. Remove the two screws from the LH and RH sides of the rear bumper as well as the four nuts located within the cavity of the rear chassis wall. Refer to diagram 5.



**Diagram 6: Gently remove the rear bumper.**

6. Gently remove the rear bumper to expose the foam insert and rear cross member.
7. Remove and discard the foam insert and the bumper reinforcement. These items are no longer required.



**Diagram 7: Install spacer plate and rubber block mount.**

8. Lower the muffler off the rear most rubber mount.
9. Remove the muffler hanger and insert the spacer plate (item 3) and then the rubber block mount (item 20) provided. Reinstall the muffler hanger as shown in diagram 7.

**Important: Ensure that the spacer plate is between the RH chassis rail and the rubber block mount.**



**Diagram 8: Fit up Chassis brackets.**

10. Remove and discard the tie down brackets from the LH and RH Chassis Rails.
11. Fit up the LH and RH Chassis brackets (items 1 and 2) to the vehicle. Lightly secure these brackets to the chassis rails with M10 bolts, M10 Spring Washers and M10 Flat Washers (items 4,5 and 6). Refer to Diagram 8. For detailed information refer to figure 2 on page 1.

**Important: Do not remove rubber plug at the bottom of the chassis rail between captive nuts for towbar mounting.**



**Diagram 9: Lift the towbar into position.**

12. Lift the towbar into position. The sidearms of the towbar should slide in between the LH and RH Chassis brackets. Refer to diagram 9.



**Diagram 10: Lightly secure the towbar.**

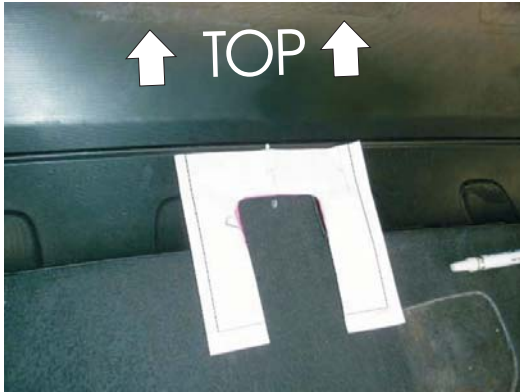
13. Lightly secure the towbar to the chassis brackets with M12 Button Socket Screws, M12 Bolts, M12 Spring Washers, M12 Flat Washers and M12 Nuts (items 7,8,9,10 and 11). Refer to Diagram 10. For detailed information refer to figure 3 on page 1.

**Important: Take careful note of the bolt orientation. Incorrect placement will result in interference with the muffler.**



Bolt	Torque Setting (Nm)
M12 Button Socket Screw (GR 8.8)	92
M12 Bolt (GR 8.8)	92
M10 Bolt (GR 8.8)	51
M6 Bolt (GR 8.8)	10

**Table 1: Recommended torque settings for Metric Bolts.**



**Diagram 11: Use the template to prepare the cut-out in the rear bumper as shown.**



**Diagram 12: Refit the muffler and bumper to the vehicle.**



**Diagram 13. Affix the load rating label to the "B" pillar as shown.**

15. Ensure that the Towbar is level and square with the vehicle. Torque all bolts to the recommended torque settings as listed in table 1.

16. Mark centreline of the bumper cover.

17. Position the Bumper Cover Cutting Template (page 5) onto the inside face of the bumper cover.

18. Align centreline of cutting template with centreline on bumper cover and alignment mark of the fitting template with the lowest edge of horizontal ridge on inside of bumper cover.

19. With a sharp knife or similar tool, carefully cut along the dotted line of the template. Once finished, use a deburring tool to dress the burs from the cut edges.

20. Fit the wireloom bracket to the vehicle and secure with M6 Bolts and M6 Nyloc Nuts. For detailed information refer to figure 4 on page 1. Torque the bolts to the recommended settings listed in table 1.

21. Refit the muffler onto the rear most rubber mount and refit the rear bumper to the vehicle.

22. Apply firm even pressure to secure the plastic hitchbox collar (item 19) to the hitch box.

23. Insert the tongue (item 23) into the Towbar hitch box and secure with the 5/8" UNC x 3-1/2" Pull Pin, 5/8" UNC Nut and R-Clip (items 12, 13 and 14). Refer to diagram 12.

24. Affix the load rating label (item 22) to the vehicle as shown in Diagram 13.

**IMPORTANT INFORMATION**

- The towbar is to be used solely for the purpose of towing. Other uses may damage towbar and/or vehicle.
- The tongue should be attached before towing using items 12, 13, and 14 and removed after towing.
- When not towing, ensure the tongue is securely stored in a closed compartment within the vehicle. Injury may occur if the tongue moves about within the vehicle.
- To avoid tongue rattle, secure the 3/8" UNC x 1-1/4" anti-rattle bolt and nut (items 15 and 16).

# REAR BUMPER COVER CUTTING TEMPLATE

NOTE: ENSURE THAT THE CENTRELINE OF THE REAR BUMPER IS IN LINE WITH THE CENTRELINE ON THE CUTTING TEMPLATE

