

# Side visor

## Installation instruction sheet

### Part number

Part number

Side visor set

08611-48820

### Component parts

No	Part name	Side visor set		Qty
1	Visor (front)	RH	_____	1
		LH	_____	1
2	Visor (rear)	RH	_____	1
		LH	_____	1

### Matters to be attended to during installation

For your safety, this installation instruction sheet indicates with the following marks the matters that you are particularly requested to keep in mind:



#### CAUTIONS

Warns that an accident, injury, damage to the vehicle, etc. is likely to occur unless careful attention is given to the cautions.



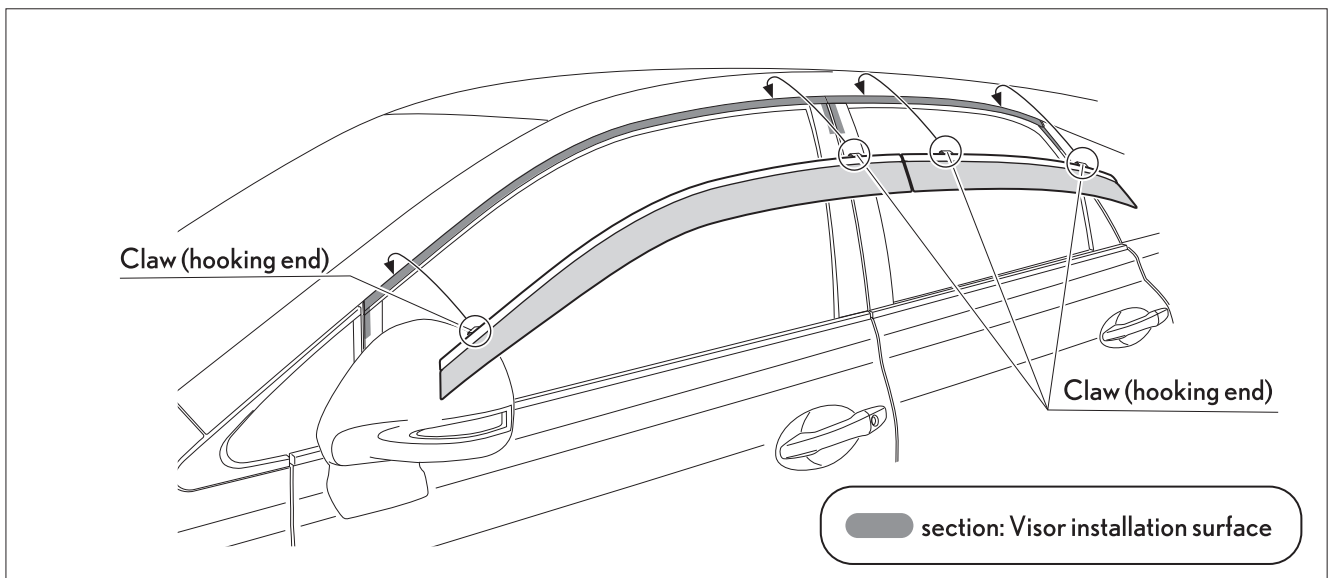
#### ADVICE

Describes matters that you are requested to understand to help you carry out work efficiently.

### Tools, etc. required for installation

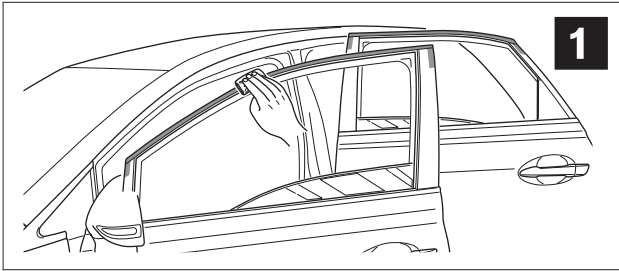
- White gasoline etc, dryer

### Outline of component




## Installation instruction

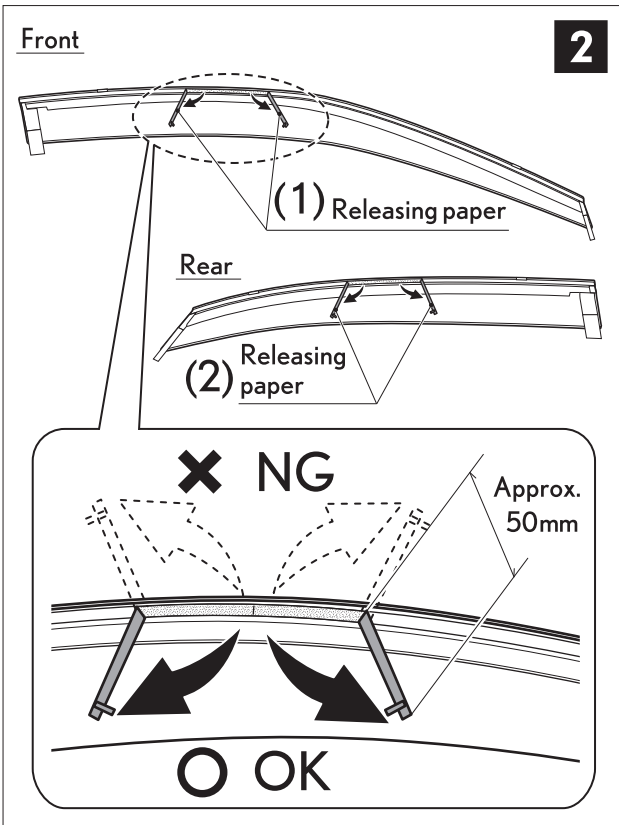
\* The installation instruction is given for the L.H. side.  
The same process should be applied for the R.H. side.



1

### Cleaning of installation plane

- 1) Completely wipe off contamination, oil, grease and water from the visor installation plane (door molding and door pillar:  section) using white gasoline, etc.



2

### Preparation for installation

- 1) (1)(2) Peel the releasing paper from the slit at the center of the double-sided adhesive tape and bend it downward (there will be no problem with workability if the releasing paper is peeled about 50mm from the center).

#### ⚠ CAUTIONS

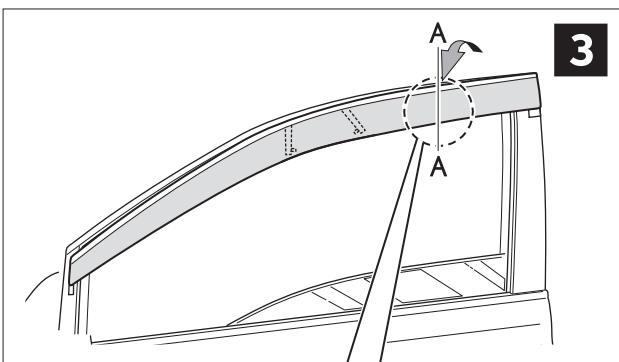
1. If double-sided adhesive tape releasing paper has been peeled more than necessary, the tape will adhere and disable installation.
2. Always bend the double-sided adhesive tape releasing paper in a downward direction along the visor. If bent upward, the claw (hooking end) will prevent the peeling of releasing paper when adhering to the visor.

### Positioning of the front visor

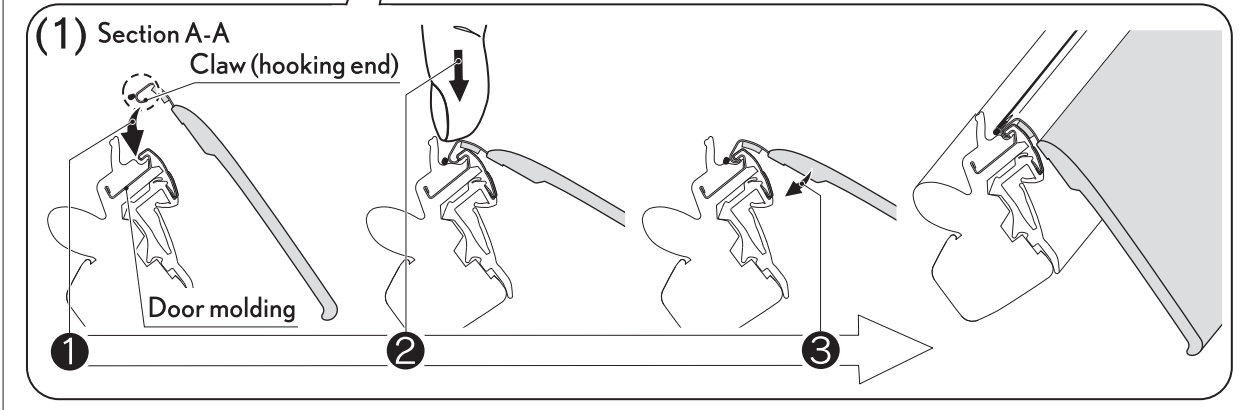
- 1) (1) Hook the rear claw (hooking end) on the upper end of the visor stainless steel molding to the door molding.

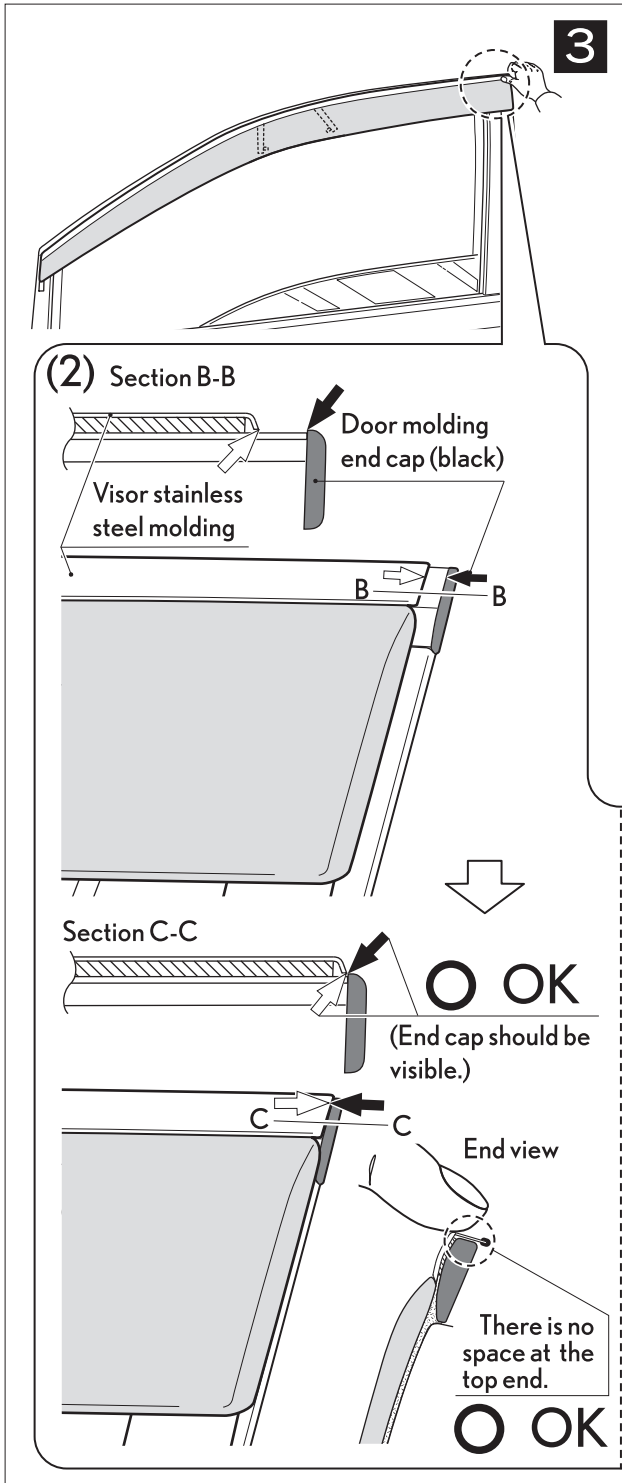
#### 👉 ADVICE

1. For ease of hooking the claw to the vehicle, hold the visor at an angle; set the claw (hooking end) to the upper end of the door molding; 2 fit it in by pressing it downward from above with the finger tips; 3 align the visor to the vehicle in this order.



3



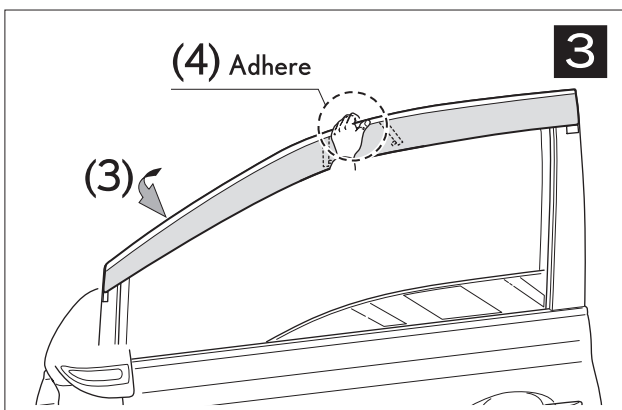
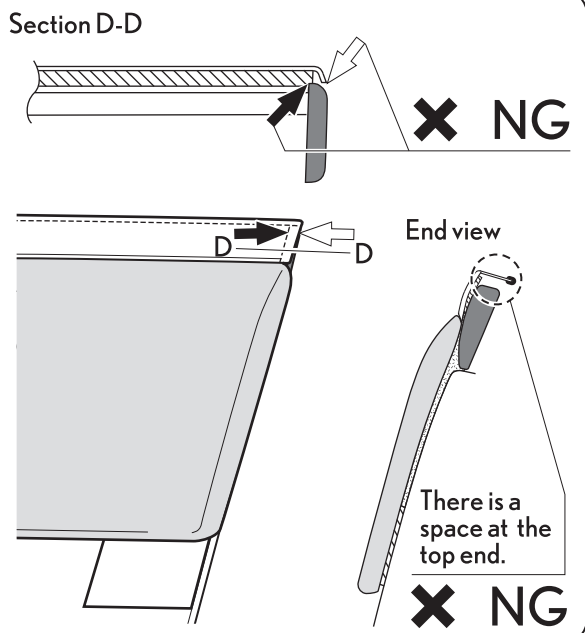


**3** 2) (2) Press the upper end of the visor by the finger and align the rear end of the visor stainless steel molding to the inside of the door molding end cap (black). Do not leave a space between the top end of the visor and the door molding end cap (black).

**CAUTIONS**

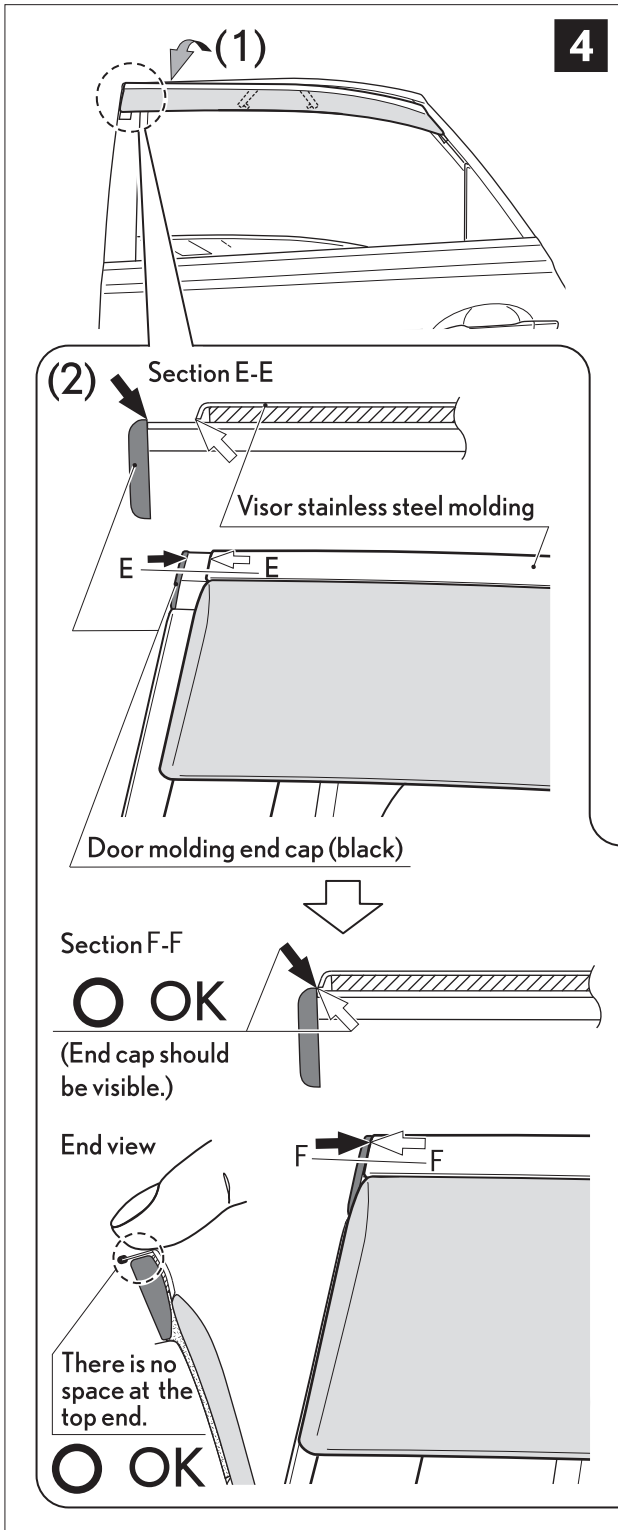
1. Align the installation position of the rear end of the front visor stainless steel molding to the inside of the door molding end cap (black). Do not leave a space between the top end of the visor and the door molding end cap (black).

*Note: Do not install the visor with its end protruding from the door molding end cap (black) or with its top end having a space from the door molding end cap (black). Otherwise, it may cause interference with the vehicle or physical injury.*



**3** 3) (3) Hook the front claw (hooking end) on the upper end of the visor stainless steel molding to the door molding in the same way as for the rear claw(hooking end).

4) (4) After determining the visor position, adhere the center section from which the double-sided adhesive tape releasing paper has been removed.



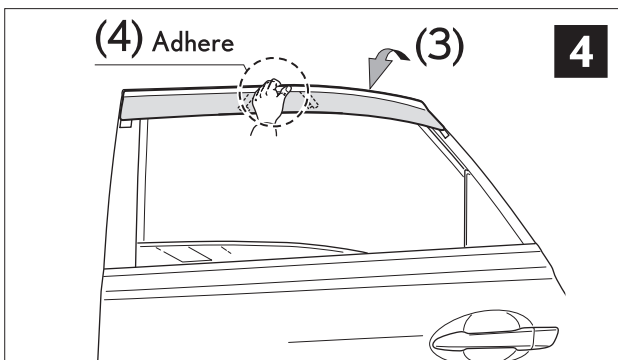
#### Positioning of the rear visor

- 4** 1) (1) Hook the front claw (hooking end) on the upper end of the visor stainless steel molding to the door molding in the same way as for the front visor.
- 2) (2) Press the upper end of the visor by the finger and align the end of the visor stainless steel molding to the inside of the door molding end cap (black). Do not leave a space between the top end of the visor and the door molding end cap (black).

#### CAUTIONS

1. Align the installation position of the front end of the rear visor stainless steel molding to the inside of the door molding end cap (black). Do not leave a space between the top end of the visor and the door molding end cap (black).

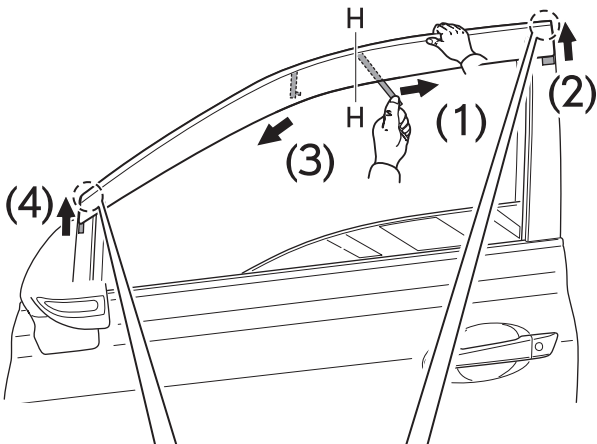
*Note: Do not install the visor with its end protruding from the door molding end cap (black) or with its top end having a space from the door molding end cap (black). Otherwise, it may cause interference with the vehicle or physical injury.*



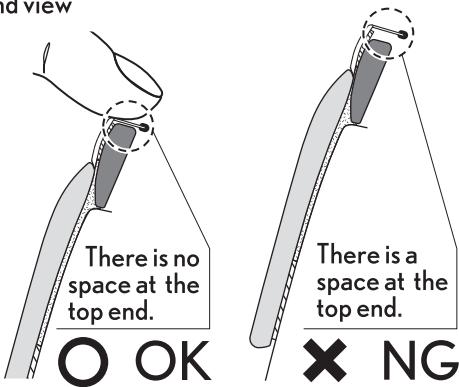
- 4** 3) (3) Hook the rear claw (hooking end) on the upper end of the visor stainless steel molding to the door molding following the same steps as for the front visor.
- 4) (4) After determining the visor position, adhere the center section from which the double-sided adhesive tape releasing paper has been removed.

Front

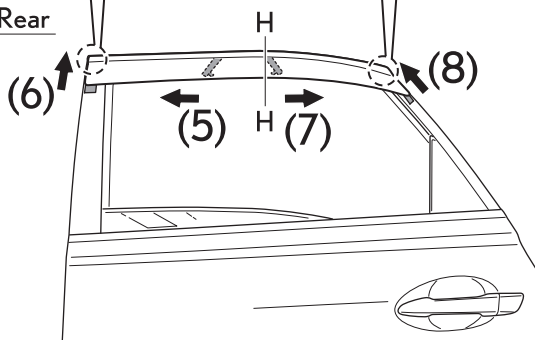
5



End view



Rear



### Adhesion of visor

- 5 1) Make sure that the positioning has been made appropriately.
- 2) Press the upper end of the visor by the finger and remove the double-sided adhesive tape releasing paper in the direction of arrow ← in the order of (1) to (8) while avoiding twisting the paper. Adhere the visor to the door molding.

### CAUTIONS

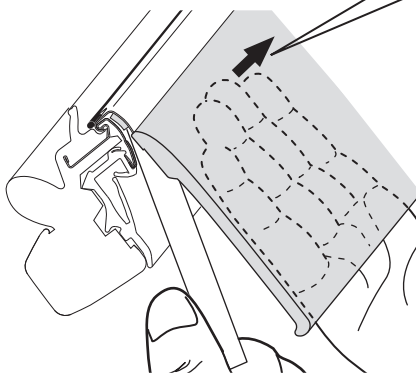
1. Crimp each end of the visor securely. If the visor is installed in a floating condition as result of incomplete crimping, it may cause physical injury.
2. Releasing paper (2), (4), (6) and (8) doesn't remove when releasing paper (1), (3), (5) and (7) is previously remove.

### ADVICE

1. When removing releasing paper (1), (3), (5) and (7), press the stainless steel portion on the inside of the visor towards the outside to create clearance between the visor and the vehicle to make removal easier.

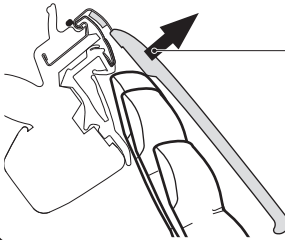
*Note: Lifting the lower end of the visor toward yourself does not make the removal easier.*

Section H-H



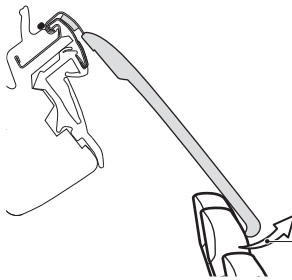
OK

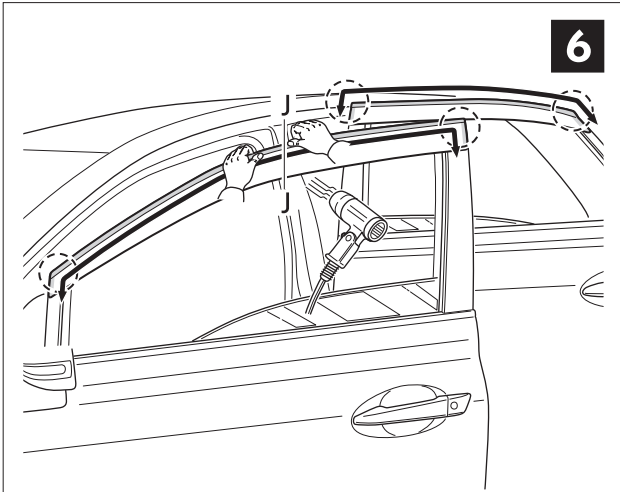
Make the stainless steel portion inside the visor float by pressing it from the inside to the outside.



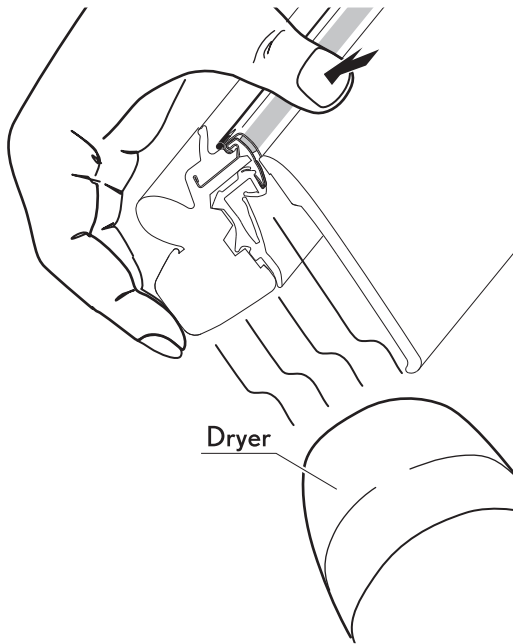
NG

Lift the lower end of the visor toward yourself.





Section J-J



### Heating and crimping of adhered plane

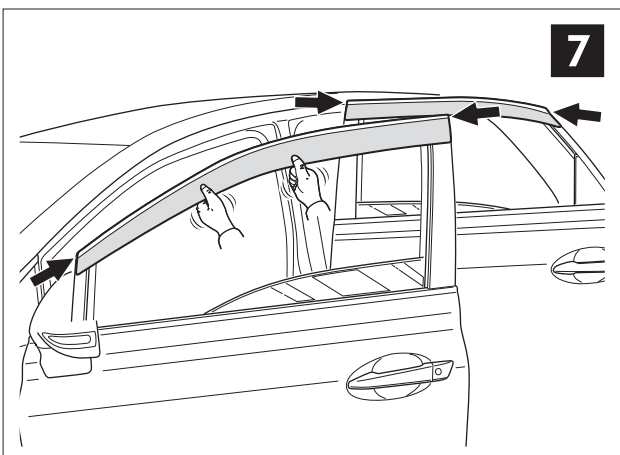
- 6 1)** Crimp the visor (49N / extent to which vehicle shakes) while evenly applying a dryer to the adhesive plane of the visor for about 30 sec. until the visor temperature rises to the temperature of the human body (about 40 degree).

#### ⚠ CAUTIONS

1. Crimp each end of the visor securely. If the visor is installed in a floating condition as result of incomplete crimping, it may cause physical injury.

#### 👉 ADVICE

1. Full care should be taken to avoid being burnt during work.
2. Crimping work becomes easier by using the fingers to hold the vehicle and the visor together.



### Checking after installation

- 7 1)** Make sure that no floating is observed when the adhered plane of the visor is viewed from the direction of arrow ← .
- 2)** Lightly pull the visor toward yourself and check that it is securely installed.

#### 👉 ADVICE

1. Always shelve the visor to cure it for approx. 20 min. after installation in a dry place protected from rain or water splashes, otherwise it may cause the separation of the double-sided adhesive tape.