

Side Markers Bulb (#3) and Lamp Assembly Replacement

Front White Marker (#5 & #7, Parking or Clearance Light), Bulb Replacement.

Bulb replacement [difficulty level 3]

Side Marker Lamp assembly replacement [difficulty level 3]

This page shows How2 get to the side markers (front and rear) and the small white marker in the front headlight assembly.

Both bulb replacement and assembly replacement can be done the same way. There is essentially no difference in the procedure or difficulty.

| SIDE MARKER LAMP | | | |
|-------------------------------------|-----------------------|-----|-------|
| R&L Side Marker Lamp Assy | R/L | #.2 | |
| #Included in R&R or O/H Front Cover | | | |
| | | | |
| 1 Lamp Assy, Side Marker | R 81730-48010 | #.2 | 26.13 |
| | L 81740-48010 | #.2 | 26.13 |
| #Included in R&R or O/H Front Cover | | | |
| 2 Lens/Body¶ | R 81731-48010 | #.2 | 19.06 |
| | L 81741-48010 | #.2 | 19.06 |
| 3 Bulb¶ | 99-00 R/L 00234-00192 | #.2 | .93 |
| | 01-02 R/L 00234-00194 | #.2 | .50 |
| #R&R One Side Complete | | | |
| 4 Socket w/Wire¶ | R/L 90075-60001 | | 7.08 |
| ¶Included w/Side Marker Lamp Assy | | | |

| | | | |
|---|-----------------|-----|--------|
| | | | |
| 065-00919 | | | |
| 1 Lamp Assy, Combination | | | |
| 1999-00 | R 81110-48031 | #.8 | 389.74 |
| | L 81150-48031 | #.8 | 389.74 |
| 2001-02 | R 81110-48080 | #.8 | 429.42 |
| | L 81150-48080 | #.8 | 429.42 |
| 2 Lens/Body¶ | | | |
| 99-00 | R 81130-48031 | #.9 | 289.40 |
| | L 81170-48031 | #.9 | 289.40 |
| 01-02 | R 81130-48080 | #.9 | 326.74 |
| | L 81170-48080 | #.9 | 326.74 |
| #Included in R&R/R Front Fender, Includes R&R/R Lower Grille & R&R Fender Liner | | | |
| 3 Bulb, Otr Headlamp¶ | R/L 90080-81041 | #.2 | 20.00 |
| 4 Bulb, Inner Headlamp¶ | R/L 90981-13047 | #.2 | 20.02 |
| 5 Bulb, Clearance¶ | R/L 00234-00192 | #.2 | .93 |
| 6 Bulb, Turn Signal¶ | R/L 90981-13043 | #.2 | 3.81 |
| #R&R One Side Complete | | | |
| 7 Socket, Clearance¶ | R/L 99159-10228 | | 6.83 |
| 8 Socket, Turn Signal¶ | R/L 90075-99128 | | 7.83 |
| ¶Included w/Combination Lamp Assy | | | |

Bulb general p/n 168 (12V 5W) [Specs for 168 vs 194](#)

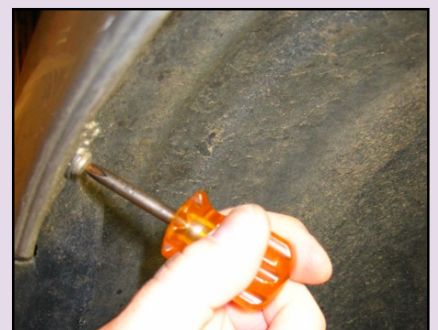
To get to the side marker lamp socket and assembly, one has to get to the back of the assembly in the bumper cover. Likewise, to get to the front white marker in the headlight assembly, one has to get inside the front wheel well.

The pics show the drivers side front. One must remove most of the fender inner plastic liner

(cowling). First remove at least 3 Philips head screws along the lip of the inside fender well starting at the lower front (first 2 are shown in the pic).



This is where the stubby Philips screw driver comes in handy (right). Of course jacking the vehicle several inches will help this and make easier for the whole job.

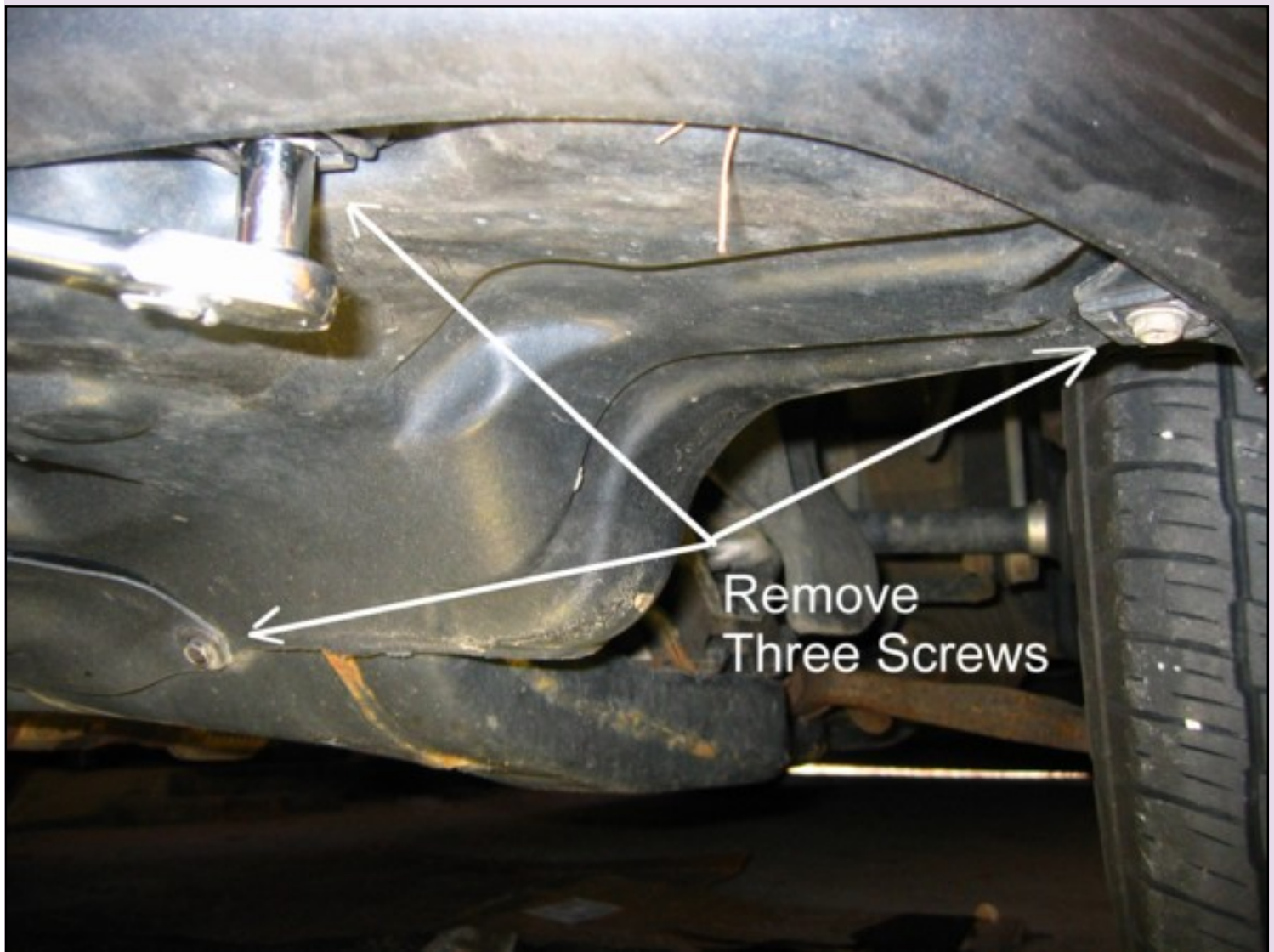


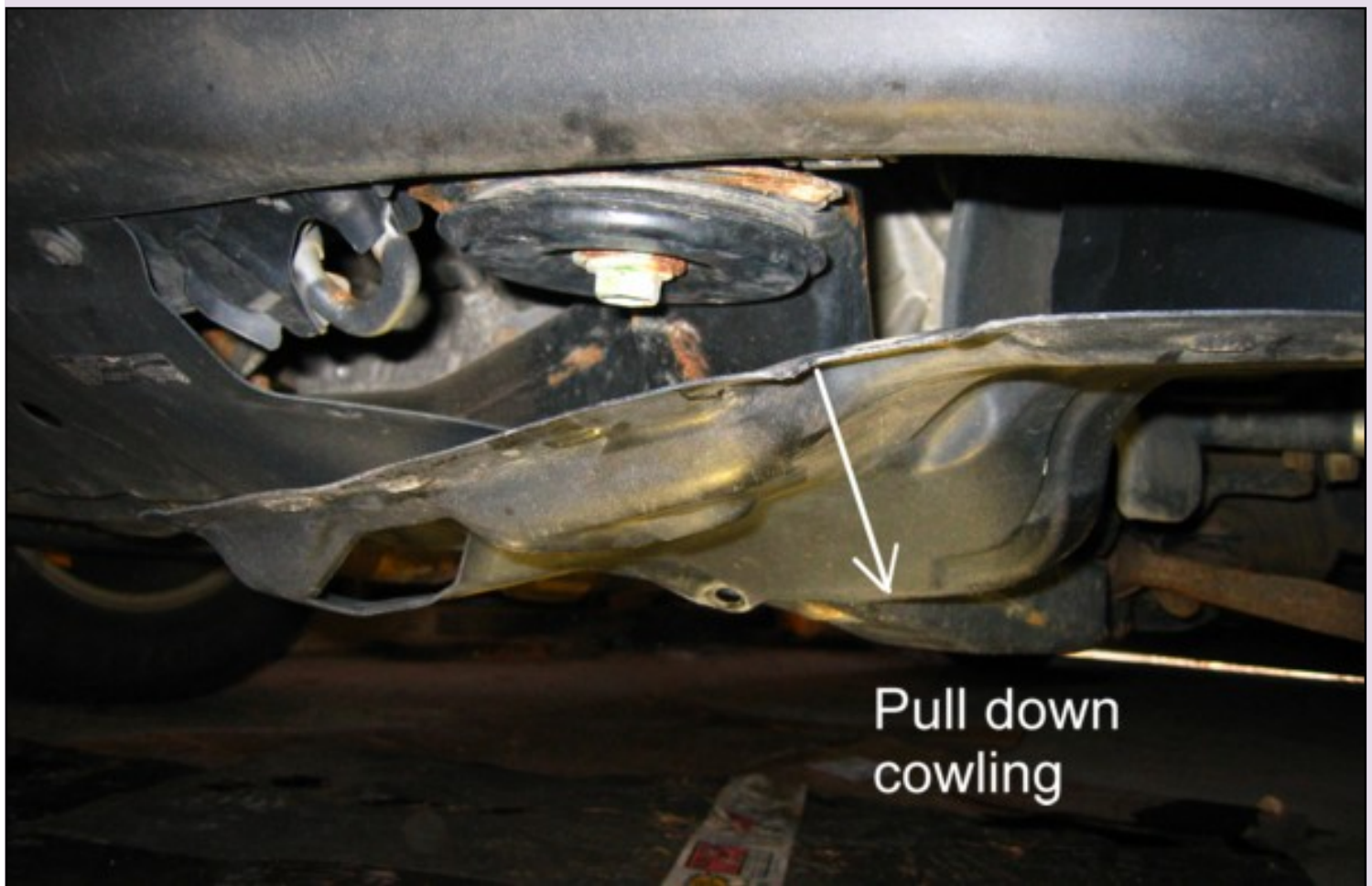


In front of the wheel, on the inside edge there is one bolt to remove (below). There is one more bolt along the inside edge above the tire near the spring (strut), not shown.



There are 3 more bolts to remove at the bottom front. Looking under the front, there are 3 bolts to be removed that hold the cowling in place.





Once you pull down the front liner portion, work out most of the wheel well liner to get inside the front bumper.



Yes, those are my work gloves and they do have duct tape around the thumb. No flaming e-mails please! They are my favorite work gloves. Get yours out because this wheel well liner is dirty to say the least.



This

pic shows the type of clips that hold the plastic liner in place. After the screws/bolts are removed, the liner is removed from between the inside of the "C" clip.

Looking in and up toward the front you will see the small white lamp socket that is part of the front headlight assembly. This is the typical way to replace this bulb. Look at the faint white box in the pic below. An enlargement is shown in the next pic. This is the parking or Clearance marker in the front headlight assembly.





You can replace the white lamp in the front headlight assembly by turning 1/8 turn CCW and pulling it out. Then pull the bulb straight out of the socket. Once I replace a bulb, I typically turn on the light to make sure it works before reassembly.



Find some bulbs like these. This package claims to be double-life. That's nice. They are 5 watt lamps. [Specs for 168 vs 194.](#) Long Life are worth looking for because of the work required to get to change them.



Looking below at the inside of the bumper cover, you will see the back of the side marker assembly and the socket for that lamp. This one also is removed by turning 1/8 turn CCW and pulling out. The one on my vehicle actually collected water inside of the assembly. Since the bulb/socket was wet inside (and we use a lot of salt up here in the NE), the contacts in the socket were eaten away. I have a new socket on order now. Replace the bulb, test and reinsert in the assembly.



If you wish to remove the entire assembly and replace with some new Crystal Clear style assemblies, just reach inside and use a ratchet to undo the nut at the front of the assembly.



In this case the assembly was filled with water! The connector was also ruined - contacts eaten away. A lot of salt is used up here in the NE and everything rusts (if you noticed the undercarriage pics). I've ordered the crystal clear assemblies to replace and update from [ProCarParts](#) - \$36/pair + shipping (Dec 2003).

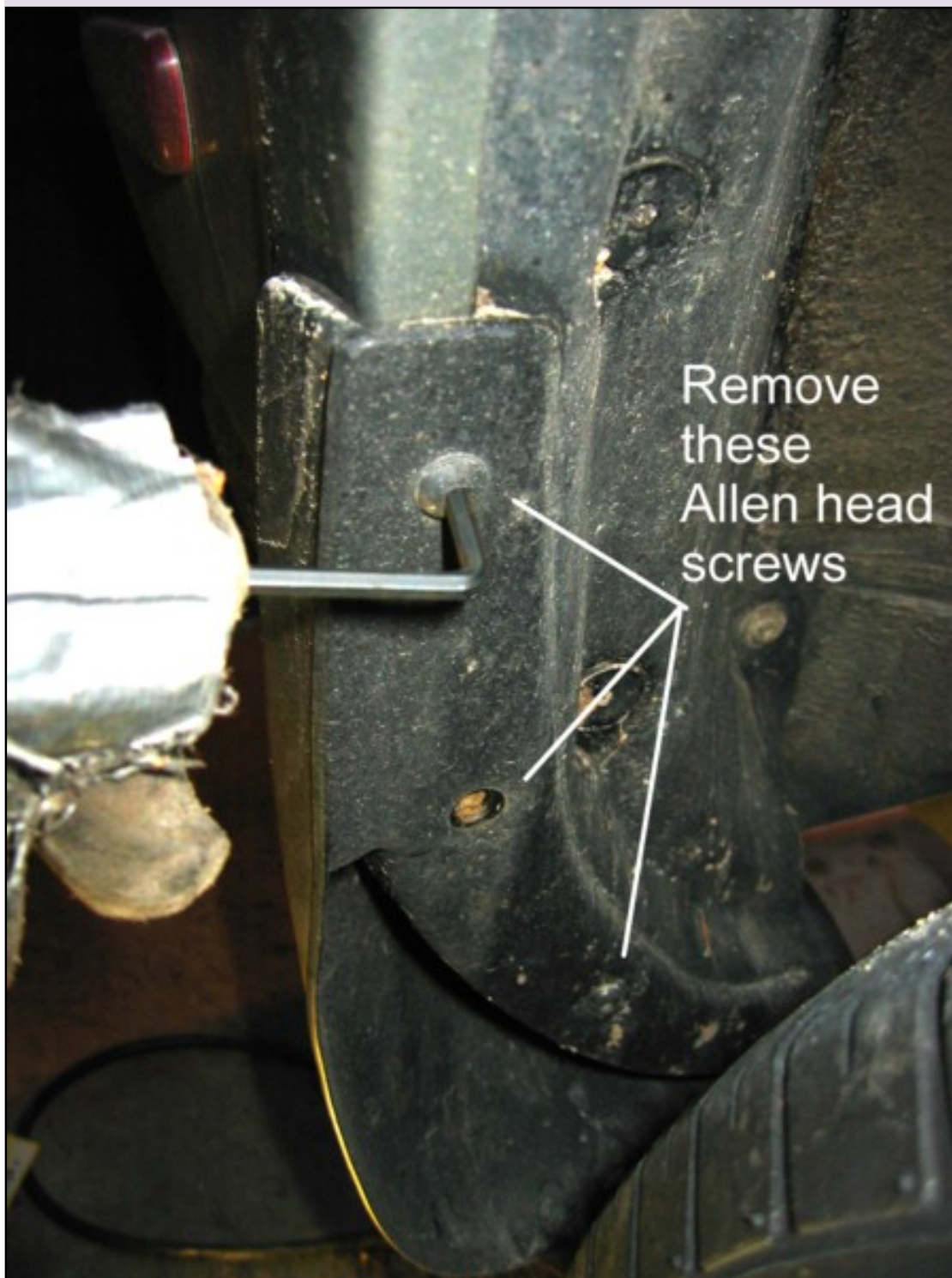
TIPS: SteveH at Club Lexus suggested drilling small drain holes in the bottom of each assembly to allow the water to drain. This is easy to do and the assemblies do not have to be removed. CK6Speed also from Club Lexus suggested adding additional sealant on the plastic seams (silicone) but requires removal (perhaps I'll do that on the new assemblies before installation).

Delivery came today: New clear markers from ProCarParts: Packaging and installed. The new assemblies came with new bulb sockets and amber bulbs. Now that I'm getting good at removing the wheel well liner, it took under an hour to install the new unit.



Rear side Marker Assembly and Bulb replacement.

Several pieces must be removed. First the mud flap has to be taken off. These are removed with an Allen wrench. Then remove the mud flap.



Next pry out the 2 plastic plugs in the inner plastic shield. These are difficult to pry out. Try not to break them, although mine almost came apart. If you break them, you may not need them for reassembly anyway. You have to remove one Philips screw (under the word "screws" in the above pic and behind the number "2" in the pic below).



Once the 2 plugs are out, you can pull out the shield as below.



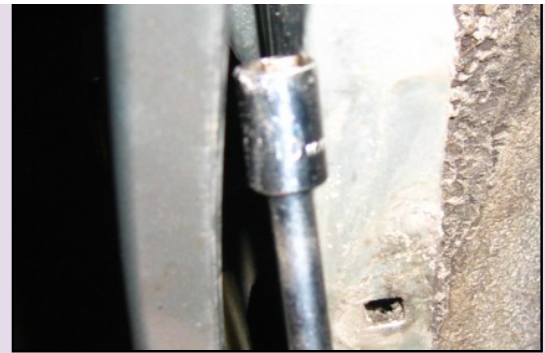
Once the inner shield is removed, there are 2 screws that must come out. The first is shown below at the front of the bumper cover below.



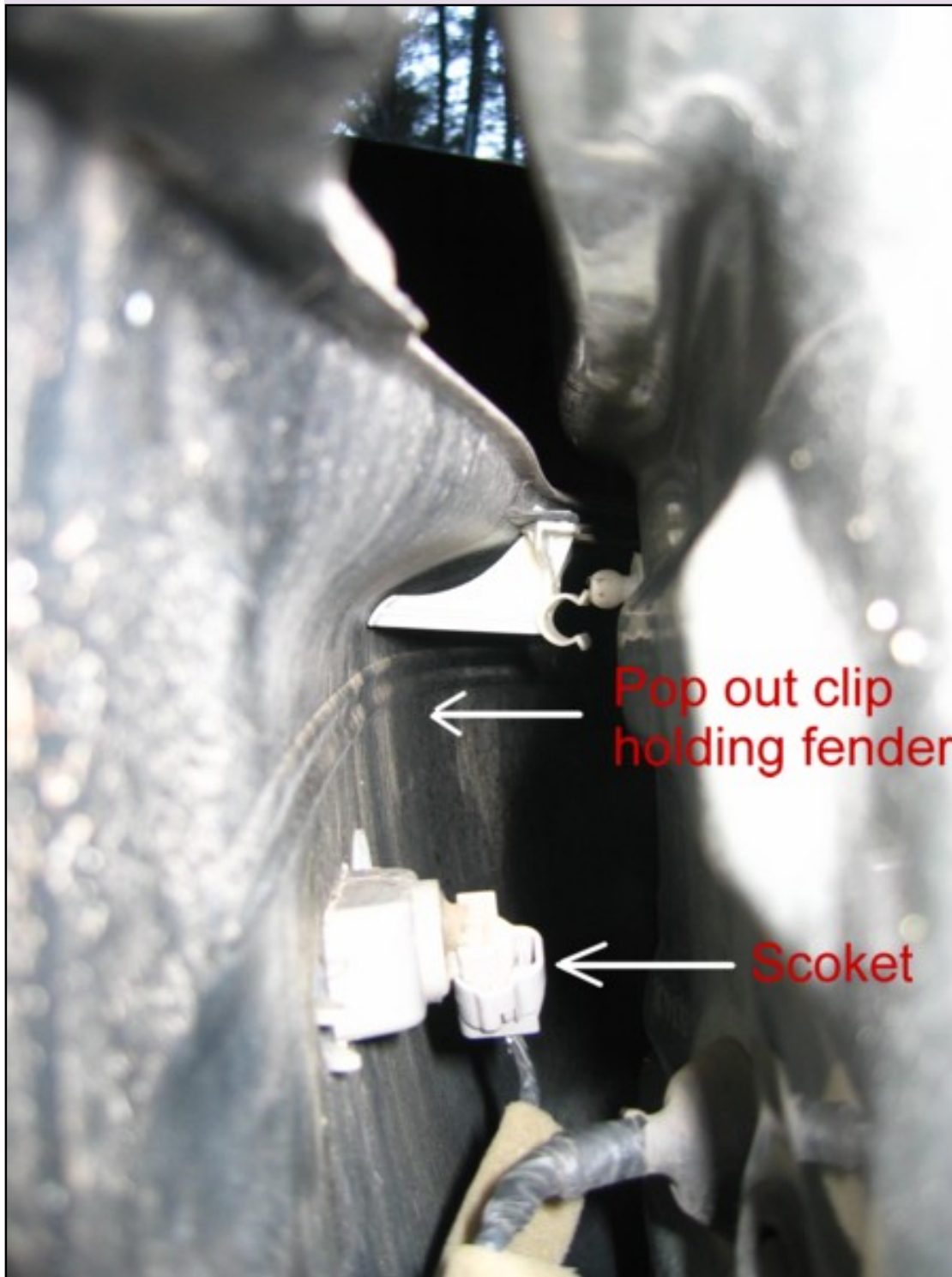
The best way to get to this bolt is with a long #3 Phillips screwdriver or nut driver (10mm) or a socket on a socket wrench with extension.

The second bolt is in the top of the rear bumper. Open the hatch back and remove the Philips screw and washer.





Once these bolts/screws are out, you can pull out the plastic bumper cover and you will be able to pop apart the "C" clip at the inside back corner (white plastic ball and "C" clip). The side marker lamp socket is accessible and the socket may be removed by turning 1/8 turn CCW.



Pull out the socket to replace the bulb.



Replace the lamp and test before reassembly.



Having fun yet?

[RX 300 How2 Home](#)

Site LOGz 