

POPPFORMANCE

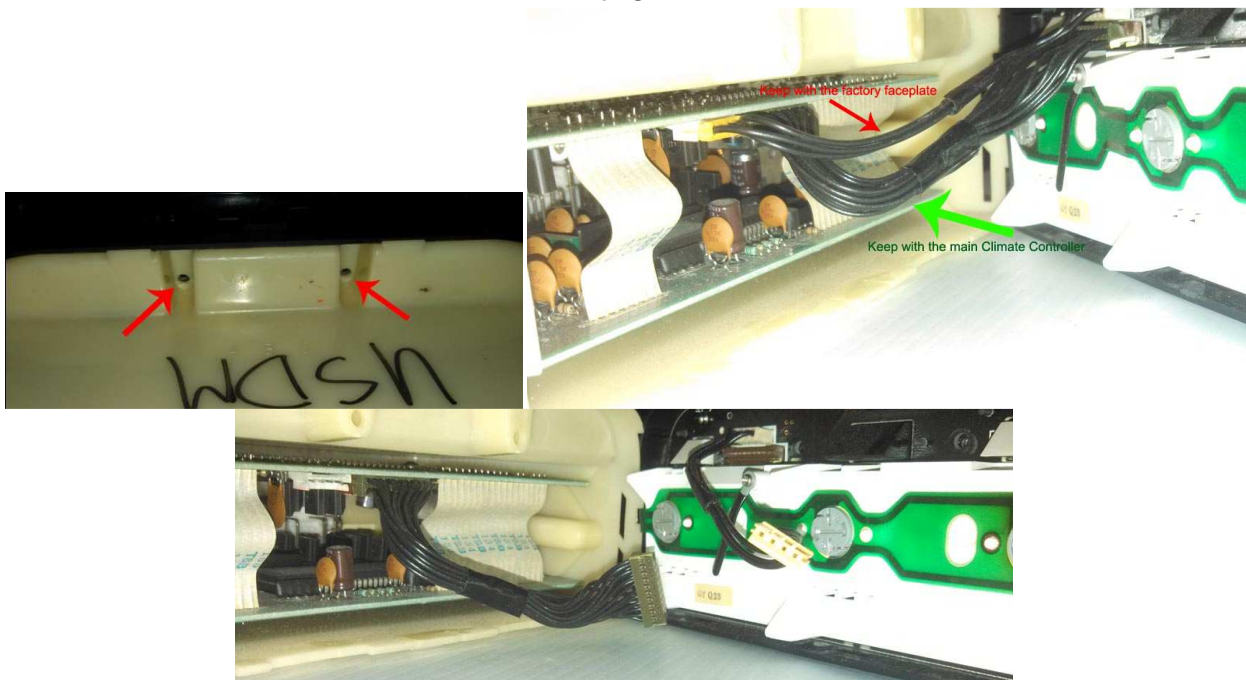
This is not a manual. This is a quick installation guide on installing your Popformance LXCC

Please download your manual at <http://www.popformance.com/Products/LXCC/Manual/>

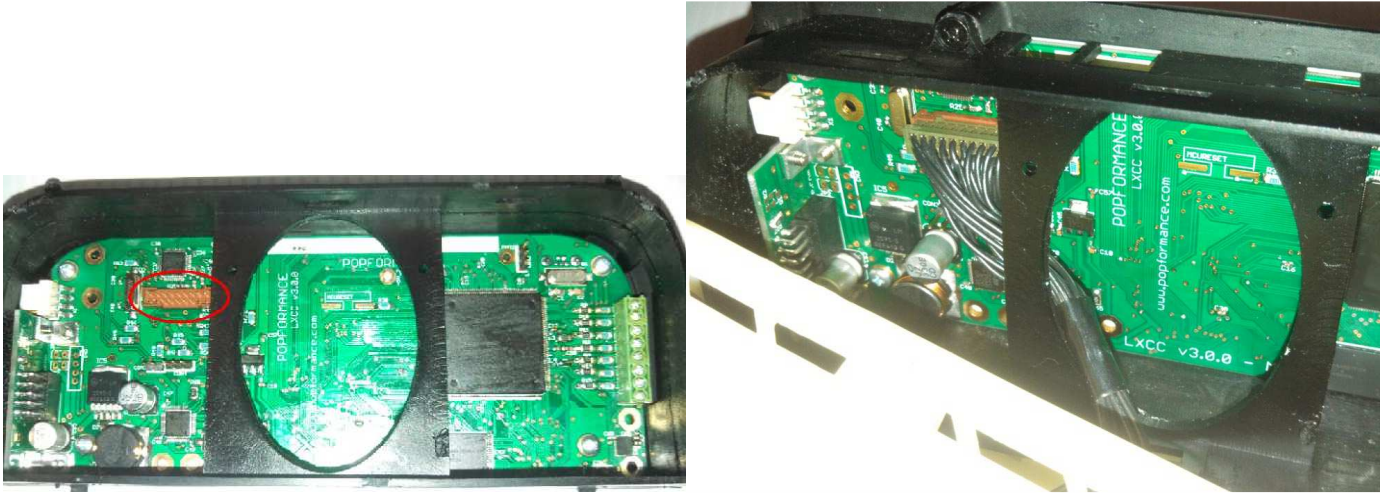
Step 1: Disconnect the car battery and remove your factory Climate Control



Step 2: Remove the faceplate from your climate controller. There are cable connections between the faceplate onto the controller. One with a large bunch of wires and one with only four wires. The large bunch of wires will stay with the controller and the



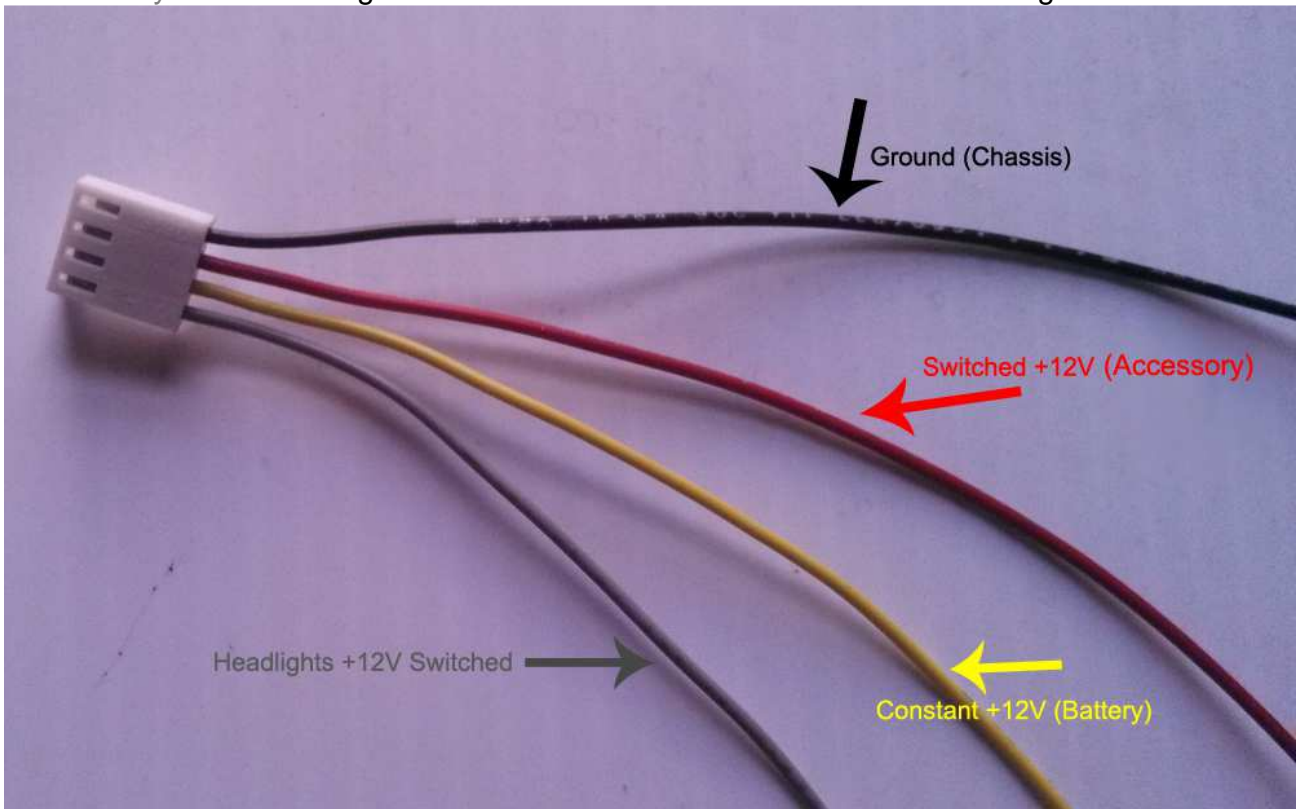
Step 3: Route the OEM cable underneath the main hoop of new Face and plug it into the climate control



Step 4: Assemble the faceplate of the climate control and reinstall

Step 5 (Power): There are 4 additional wires that must be routed in the car to give the faceplate the required current

- Black: Ground. Connect to car chassis
- Red: +12V Switched. This must come on when on Accessory
- Yellow: +12V Battery. This must always be on even when the key is off
- Gray: +12V Headlight switched. This must come on when the headlights are on



Step 6: Once the wires are installed, connect to the side of the LXCC and reinstall the unit. You can now connect your battery and use your car



Thank you for purchasing the Popformance LXCC

Disclaimer: By using the Popformance LXCC, you agree that altering your vehicle with the Popformance LXCC may cause damage and/or will not allow your vehicle to pass inspections for which Popformance will not be held responsible.