

Front Suspension Knock Noise During Quick Brake Application

Service Category Suspension

Section Front Suspension

Market USA

Lexus Supports
ASE Certification 

Applicability

YEAR(S)	MODEL(S)	ADDITIONAL INFORMATION
2007 – 2010	LS460	VDS(s): BL1EF, BL46F, GL1EF, GL46F

Introduction

Some 2WD LS model vehicles may exhibit a knock/clunk noise from the front suspension during quick application of the brakes. This is usually most noticeable while driving at parking lot speeds. Follow the repair procedure in this bulletin to address this condition.

Production Change Information

This bulletin applies to vehicles produced **BEFORE** the Production Change Effective VINs shown below.

MODEL	PLANT	DRIVETRAIN	PRODUCTION CHANGE EFFECTIVE VIN
LS 460	Tahara	2WD	JTHBL5EF#A#098437
LS 460L			JTHGL5EF#A#040325

Warranty Information

OP CODE	DESCRIPTION	TIME	OFP	T1	T2
SU1201	Install Suspension Lower Arm No. 1 for Both Right and Left sides. Toe-In, Camber and/or Caster	2.9	48640-59015	91	14

APPLICABLE WARRANTY

- This repair is covered under the Lexus Comprehensive Warranty. This warranty is in effect for 48 months or 50,000 miles, whichever occurs first, from the vehicle's in-service date.
- Warranty application is limited to occurrence of the specified condition described in this bulletin.

Front Suspension Knock Noise During Quick Brake Application

Parts Information

MODEL	DRIVETRAIN	PREVIOUS PART NUMBER	CURRENT PART NUMBER	PART NAME	QTY
LS 460/460L	2WD	48620-59015	48620-59035	Lower No. 1 Right	1
		48640-59015	48640-59035	Lower No. 1 Left	1

Required Tools & Equipment

REQUIRED EQUIPMENT	SUPPLIER	PART NUMBER	QTY
ChassisEAR™ (or equivalent)	ADE	JSPSM06606 (JS Products)	1

NOTE

ChassisEAR™ may be ordered by calling Approved Dealer Equipment (ADE) at 1-800-368-6787.

SPECIAL SERVICE TOOLS (SST)	PART NUMBER	QTY
Ball Joint Puller*	09960-20010	1
Ball Joint Puller*	09628-50010-01	1

* Essential SST.

NOTE

Additional SSTs may be ordered by calling 1-800-933-8335.

Repair Procedure

1. Conduct a road test to verify the condition.

Is the condition duplicated during quick application of the brakes?

- **YES** — Proceed to step 2.
- **NO** — This bulletin does NOT apply. Refer to the Repair Manual for further diagnosis.

2. Use ChassisEAR™ (or equivalent) to ensure the noise is coming from the lower No. 1 control arms.

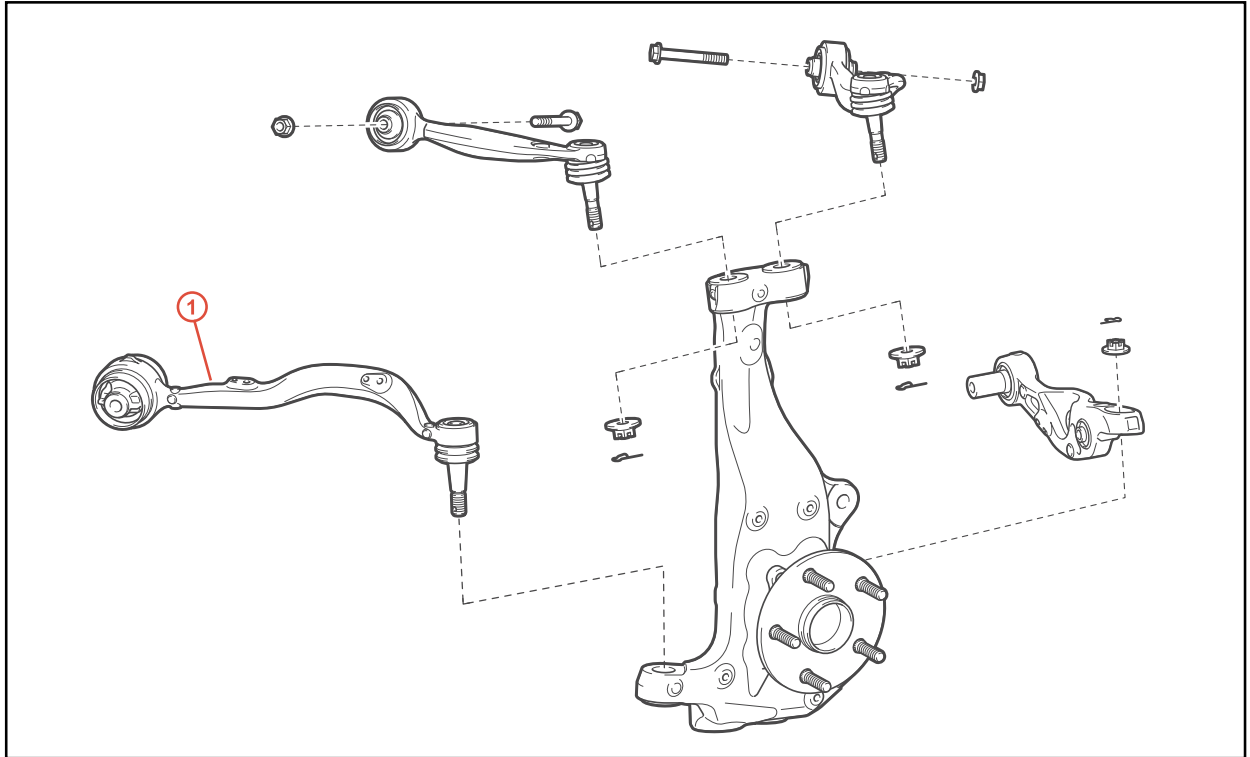
Is the noise coming from the lower No. 1 control arms?

- **YES** — Proceed to step 3.
- **NO** — This bulletin does NOT apply. Refer to the Repair Manual for further diagnosis.

Front Suspension Knock Noise During Quick Brake Application

Repair Procedure (Continued)

Figure 1.



1	Front Suspension Lower Arm Assembly, No. 1
----------	---

3. Replace the lower No. 1 control arms for both right and left sides.

Refer to the Technical Information System (TIS), applicable model and model year Repair Manual:

Removal – Lower Control Arms:

- [2007](#) / [2008](#) / [2009 \(2WD\)](#) / [2010 \(2WD\)](#) LS 460:
Suspension – Front Suspension – “Suspension: Front Lower Suspension Arm: Removal”

Installation – Lower Control Arms:

- [2007](#) / [2008](#) / [2009 \(2WD\)](#) / [2010 \(2WD\)](#) LS 460:
Suspension – Front Suspension – “Suspension: Front Lower Suspension Arm: Installation”

Front Suspension Knock Noise During Quick Brake Application

Repair Procedure (Continued)

4. Perform the following steps to ensure that the new suspension arm bushings are relieved of stress.
 - A. After installing new arms, place the vehicle on the ground (NOT on lift).
 - B. With the engine idling, turn the steering slowly from lock-to-lock 10 times.
5. Check front wheel alignment and adjust if required.
6. Road test the vehicle to confirm the noise is no longer present.