


Front Suspension Knock Noise

Service Category Suspension

Section Front Suspension

Market USA

Lexus Supports
ASE Certification 

Applicability

YEAR(S)	MODEL(S)	ADDITIONAL INFORMATION
2007 – 2010	LS460	
2008 – 2010	LS600H	

Introduction

Some LS model vehicles may exhibit a knock/clunk noise while driving over bumps or when applying the brakes at any vehicle speed. Follow the repair procedure in this bulletin to address this condition.

Production Change Information

This bulletin applies to vehicles produced **BEFORE** the Production Change Effective VINs shown below.

MODEL	DRIVETRAIN	PLANT	PRODUCTION CHANGE EFFECTIVE VIN
LS 460	2WD	Tahara	JTHBL5EF#A#098437
LS 460L			JTHGL5EF#A#040325
LS 460	4WD		JTHCL5EF#A#007434
LS 460L			JTHDL5EF#A#002131
LS 600hL			JTHDU1EF#A#012577

Parts Information

MODEL	DRIVETRAIN	PREVIOUS PART NUMBER	CURRENT PART NUMBER	PART NAME	QTY
LS 460 LS 460L	2WD	48610-59085	48610-59125	Upper No. 1 Right	1
		48610-59095	48610-59135	Upper No. 2 Right	1
		48630-59085	48630-59125	Upper No. 1 Left	1
		48630-59095	48630-59135	Upper No. 2 Left	1
		48620-50070	Same	Lower No. 2 Right	1
		48640-50070	Same	Lower No. 2 Left	1

Front Suspension Knock Noise

Parts Information (Continued)

MODEL	DRIVETRAIN	PREVIOUS PART NUMBER	CURRENT PART NUMBER	PART NAME	QTY
LS 460 LS 460L LS 600hL	4WD	48610-59125	Same	Upper No. 1 Right	1
		48610-59145	Same	Upper No. 2 Right	1
		48630-59125	Same	Upper No. 1 Left	1
		48630-59145	Same	Upper No. 2 Left	1

Warranty Information

2WD Coil Sprung:

OP CODE	DESCRIPTION	TIME	QTY	T1	T2
SU1202	Install Suspension Upper Arms No. 1 and No. 2 for One Side. Toe-In, Camber and/or Caster	2.7	48610-59085	91	14
SU1203	Install Suspension Upper Arms No. 1 and No. 2 for Both Right and Left Sides. Toe-In, Camber and/or Caster	4.0			
SU1204	Install Suspension Upper Arms No. 1 and No. 2 for One Side. Install Lower No. 2 for One Side. Toe-In, Camber and/or Caster	4.1			
SU1205	Install Suspension Upper Arms No. 1 and No. 2 for Both Right and Left Sides. Install Lower No. 2 for One Side. Toe-In, Camber and/or Caster	5.4			
SU1206	Install Suspension Upper Arms No. 1 and No. 2 for One Side. Install Lower No. 2 for Both Right and Left Sides. Toe-In, Camber and/or Caster	4.8			
SU1207	Install Suspension Upper Arms No. 1 and No. 2 for Both Right and Left Sides. Install Lower No. 2 for Both Right and Left Sides. Toe-In, Camber and/or Caster	6.1			
SU1208	Install Lower No. 2 on One Side	0.7			
SU1209	Install Lower No. 2 for Both Right and Left Sides	1.4			

Front Suspension Knock Noise

Warranty Information (Continued)

2WD w/Air Strut:

OP CODE	DESCRIPTION	TIME	OFF	T1	T2
SU1210	Install Suspension Upper Arms No. 1 and No. 2 for One Side. Toe-In, Camber and/or Caster	2.8	48610-59085	91	14
SU1211	Install Suspension Upper Arms No. 1 and No. 2 for Both Right and Left Sides. Toe-In, Camber and/or Caster	4.2			
SU1212	Install Suspension Upper Arms No. 1 and No. 2 for One Side. Install Lower No. 2 for One Side. Toe-In, Camber and/or Caster	4.2			
SU1213	Install Suspension Upper Arms No. 1 and No. 2 for Both Right and Left Sides. Install Lower No. 2 for One Side. Toe-In, Camber and/or Caster	5.6			
SU1214	Install Suspension Upper Arms No. 1 and No. 2 for One Side. Install Lower No. 2 for Both Right and Left Sides. Toe-In, Camber and/or Caster	4.9			
SU1215	Install Suspension Upper Arms No. 1 and No. 2 for Both Right and Left Sides. Install Lower No. 2 for Both Right and Left Sides. Toe-In, Camber and/or Caster	6.3			
SU1216	Install Lower No. 2 on One Side	0.7			
SU1217	Install Lower No. 2 for Both Right and Left Sides	1.4			

4WD:

OP CODE	DESCRIPTION	TIME	OFF	T1	T2
SU1218	Install Suspension Upper Arms No. 1 and No. 2 for One Side. Toe-In, Camber and/or Caster	2.9	48610-59125	91	14
SU1219	Install Suspension Upper Arms No. 1 and No. 2 for Both Right and Left Sides. Toe-In, Camber and/or Caster	4.4			

APPLICABLE WARRANTY

- This repair is covered under the Lexus Comprehensive Warranty. This warranty is in effect for 48 months or 50,000 miles, whichever occurs first, from the vehicle's in-service date.
- Warranty application is limited to occurrence of the specified condition described in this bulletin.

Front Suspension Knock Noise

Required Tools & Equipment

REQUIRED EQUIPMENT	SUPPLIER	PART NUMBER	QTY
ChassisEAR™ (or equivalent)	ADE	JSPSM06606 (JS Products)	1

NOTE

ChassisEAR™ may be ordered by calling Approved Dealer Equipment (ADE) at 1-800-368-6787.

SPECIAL SERVICE TOOLS (SST)	PART NUMBER	QTY
Ball Joint Puller*	09960-20010	1
Ball Joint Puller*	09628-50010-01	1
Air Tube Separator*	09730-00010	1
Drive Shaft Nut Chisel*	09930-00010-01	1

* Essential SST.

NOTE

Additional SSTs may be ordered by calling 1-800-933-8335.

Front Suspension Knock Noise

Repair Procedure

1. Conduct a road test to verify the condition.

NOTE

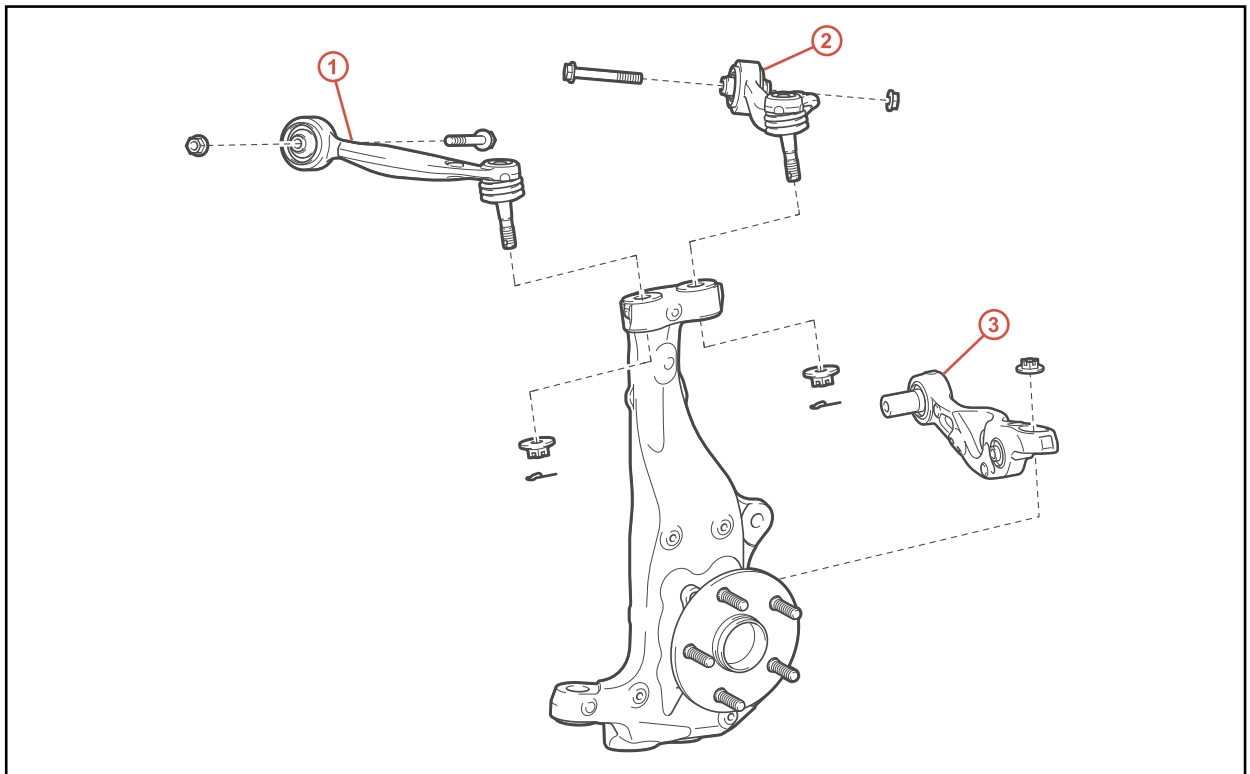
If noise is not present during the test drive, this bulletin does NOT apply.

2. If the condition is duplicated, use ChassisEAR™ (or equivalent) to isolate the source of the noise.
 - If the noise is isolated to any of the three control arms identified in Figure 1, follow the Repair Manual to replace the control arms that exhibit the noise. Go to step 3.
 - Inspect the remaining control arms for cracking and/or abnormal wear. If cracking and/or abnormal wear is identified, follow the Repair Manual to replace the control arms that exhibit this condition. Go to step 3.

NOTE

Upper control arms must be replaced in pairs. For example, if Upper No. 1 is being replaced, Upper No. 2 must also be replaced.

Figure 1.



1	Front Suspension Upper Arm Assembly, No. 1
2	Front Suspension Upper Arm Assembly, No. 2

3	Front Suspension Lower Arm Assembly, No. 2
----------	---

Front Suspension Knock Noise

Repair Procedure (Continued)

3. Replace the affected control arms.

Refer to the Technical Information System (TIS), applicable model and model year Repair Manual:

Removal – Upper Control Arms:

- [2007](#) / [2008](#) / [2009 \(2WD\)](#) / [2009 \(AWD\)](#) / [2010 \(2WD\)](#) / [2010 \(AWD\)](#) LS 460:
Suspension – Front Suspension – “Suspension: Front Upper Suspension Arm: Removal”
- [2008](#) / [2009](#) / [2010](#) LS 600hL:
Suspension – Front Suspension – “Suspension: Front Upper Suspension Arm: Removal”

Removal – Lower Control Arms:

- [2007](#) / [2008](#) / [2009 \(2WD\)](#) / [2010 \(2WD\)](#) LS 460:
Suspension – Front Suspension – “Suspension: Front Lower Suspension Arm: Removal”
- [2008](#) / [2009](#) / [2010](#) LS 600hL:
Suspension – Front Suspension – “Suspension: Front Lower Suspension Arm: Removal”

Installation – Upper Control Arms:

- [2007](#) / [2008](#) / [2009 \(2WD\)](#) / [2009 \(AWD\)](#) / [2010 \(2WD\)](#) / [2010 \(AWD\)](#) LS 460:
Suspension – Front Suspension – “Suspension: Front Upper Suspension Arm: Installation”
- [2008](#) / [2009](#) / [2010](#) LS 600hL:
Suspension – Front Suspension – “Suspension: Front Upper Suspension Arm: Installation”

Installation – Lower Control Arms:

- [2007](#) / [2008](#) / [2009 \(2WD\)](#) / [2010 \(2WD\)](#) LS 460:
Suspension – Front Suspension – “Suspension: Front Lower Suspension Arm: Installation”
- [2008](#) / [2009](#) / [2010](#) LS 600hL:
Suspension – Front Suspension – “Suspension: Front Lower Suspension Arm: Installation”

4. Perform the following steps to ensure that the new suspension arm bushings are relieved of stress.

NOTICE

Damage of installed parts may occur if these steps are NOT followed properly.

- A. After installing new arms, place the vehicle on the ground (NOT on lift).
- B. With the engine idling, turn the steering slowly from lock-to-lock 10 times.

Front Suspension Knock Noise

Repair Procedure (Continued)

5. Check front wheel alignment and adjust if required.
6. Road test the vehicle to confirm the noise is no longer present.