

2007 LS 460 HDD Change

This is for informational purposes. This process worked for me and may not be the same for your vehicle. Gaining access to the HDD requires removal of trim panels that are easily cracked if care is not used. Proceed at your own risk. If in doubt, have a dealer perform this job...and be prepared to pay handsomely for it. The steps provided are a general description of what's needed to get the job done, I did not list every screw or bolt that has to be removed. Once you start pulling the trim panels, you'll quickly see what needs to get removed. The whole process of removing the nav unit, replacing the HDD and reinstalling everything will take appx. 2 hours. Expect to pay \$1600 for the HDD and about \$400 for labor if going to the dealer. Here goes:

Step 1

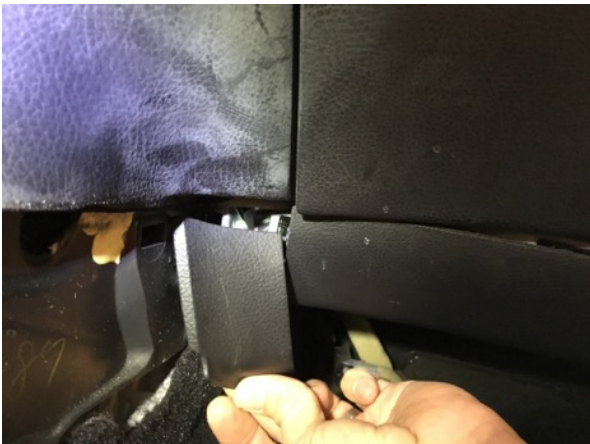
Remove 2 leather side panels on center console (not pictured). Pull panels towards the door and they will release from the clips.

Remove wood trim over glove box exposing 3 hex screws, remove screws.



Step 2

Remove small trim panel under glove box to expose 1 of the 3 bolts securing passenger knee airbag. (10MM socket needed). Remove trim panel underneath glove box (No hardware just clips)



Step 2 Cont'd

Remove 3 bolts holding in knee airbag. Note: I didn't disconnect the wiring connector, I was able to place the whole knee airbag unit on the floor with connector in place.

Then Remove entire glove box assy and also lay on floor (otherwise you'll have to disconnect the lighting connector to remove from car).

Step 3

Remove close out panel underneath driver side console adjacent to OBDII connector and brake pedal. Then remove panel underneath steering wheel. There's a few hidden bolts here. One is underneath the wood trim above the sideview mirror controls. The other bolt is underneath the parking brake control. Pull on the plastic cover to expose the bolt. Carefully remove the trim panel. Also remove the panel underneath the start button. Now you should have access to the 4 bolts that are holding in the CD changer and navigation head unit.



Step 4

Remove 4 bolts (2 on each side) securing the hard drive and nav unit. These bolts are hard to see. See the pictures below for a general location. You can get to them with a 10mm socket on an extension. Once you remove these bolts the CD changer will need to be removed first.



1 bolt accessed through this hole holds in the Nav unit. There's another bolt in the identical position on the opposite side which is located behind the trim panel underneath the start button.

Step 4 cont'd



1 of 2 bolts securing the cd changer is located through this hole. There's another bolt (10mm Socket) on the opposite side same location.

Step 5

Remove ash tray and center console wood trim assy (lift up, clips only on these components and again I left all the electrical connectors in place). Remove the gear shift knob and place the gear shifter into the drive position (Be sure that the vehicle is chocked at this point). Carefully remove the wood trim piece located over the CD drive insertion slot. Be careful with this piece, I cracked mine. You now have access to remove the lower part of the nav/entertainment unit.



Step 6

Slide your hand behind the lower part of the entertainment unit and work the cd drive free by pulling towards you. Be sure you have removed the 2 bolts holding it in first. A decent amount of force is required, as the clips are pretty strong on this one. Remove the electrical connections from rear of unit and then remove the cd drive completely.



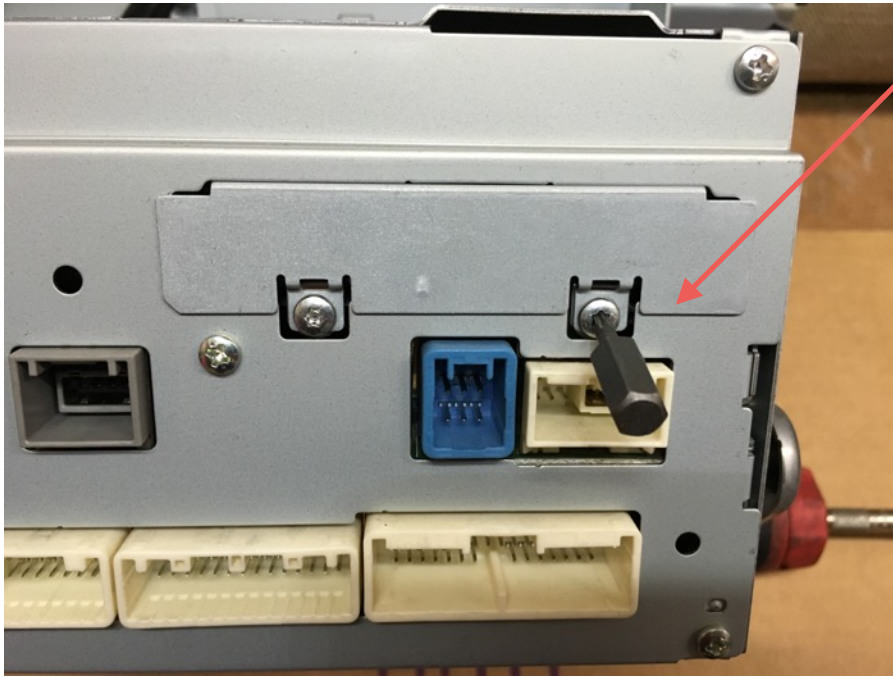
Step 7

Now the final culmination of all your hard work. Be careful with this step. Make sure that the 2 bolts securing the navigation head unit are out (10 MM Socket). Place your hand behind unit and work it free by pulling toward unit. Resist all temptation to grab unit by bezel or by the air vents above it. It will come loose if you are patient. Again the clips are tight so be careful. Once its free you'll have to remove several electrical connectors from the rear of the unit. Then that's it, pull it out of the car.

Step 8



With the nav unit out of the car, you can remove the HDD by removing the 2 tamper proof torx screws and then pulling the drive out.



2 tamper proof torx screws.

OLD 30GB HDD HITACHI ENDURASTAR J4K30-30 (NOT LEXUS PART NUMBER)



New HDD purchased 12/2015 from Lexus. Some interesting notes: The new HD is 80GB vs 30GB original drive. The new drive does come with the maps preloaded, however it's the V6.1 as indicated on the sticker which is from 2006! That means that you will have to also pay for a map upgrade which only the dealer can do because the LEXUS Navigation Update Tool (NUT) is required for the upgrade. Once the new drive is in, reverse the steps to put everything back together. Power up the car and let the data from the new drive load into the nav unit. Then you're ready to roll, minus the map update of course. Hope this helps!

NEW DRIVE

