

2-2. Instrument cluster

Gauges and meters



The units used on the speedometer and the tachometer gauge display may differ depending on the model/type.

The following gauges, meters and display illuminate when the engine switch is in IG-ON mode.

1 Tachometer

Displays the engine speed in revolutions per minute.

2 Multi-information display

→P.134

3 Speedometer

Displays the vehicle speed.

4 Fuel gauge

Displays the quantity of fuel remaining in the tank.

5 Trip meter and trip meter reset buttons

6 Odometer

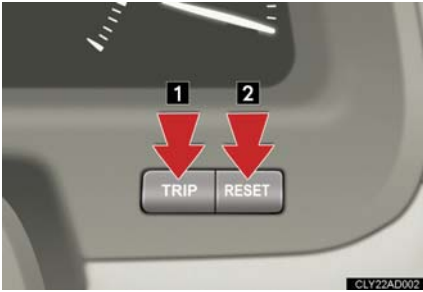
Displays the total distance the vehicle has been driven.

7 Trip meter

Displays the distance the vehicle has been driven since the meter was last reset. Trip meters A and B can be used to record and display different distances independently.

- 8 Instrument panel light control buttons
- 9 Engine coolant temperature gauge
Displays the engine coolant temperature.

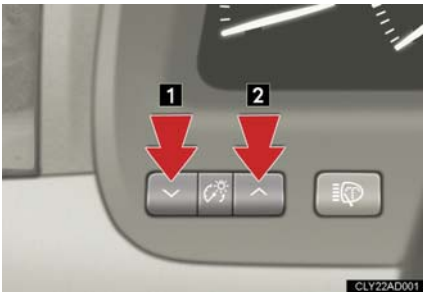
Trip meter and trip meter reset buttons



- 1 Changes the display.
- 2 Resets the trip meter currently displayed to "0".

Instrument panel light control buttons

The brightness of the instrument panel lights can be adjusted.



- 1 Darker
- 2 Brighter

 NOTICE**■ To prevent damage to the engine and its components**

- Do not let the indicator needle of the tachometer enter the red zone, which indicates the maximum engine speed.
- The engine may be overheating if the temperature gauge is in the red zone (H). In this case, immediately stop the vehicle in a safe place. Check the engine after it has cooled completely. (→P. 600)

2-2. Instrument cluster

Indicators and warning lights

The indicator and warning lights on the instrument cluster and center panel inform the driver of the status of the vehicle's various systems.

► Instrument cluster



The units used on the speedometer and the tachometer gauge display may differ depending on the model/type.

► Center panel (without touch screen)



► Center panel (with touch screen)



■ Indicators

The indicators inform the driver of the operating state of the vehicle's various systems.



Turn signal indicator
(→P. 122)



Cruise control indicator
(→P. 146, 149)



Headlight high beam indicator (→P. 138)



* AFS OFF indicator
(→P. 139)



(U.S.A.)

Headlight indicator
(→P. 138)



* Slip indicator
(→P. 174)



(CANADA)

Tail light indicator
(→P. 138)



* Brake hold standby indicator (→P. 125)



Front fog light indicator
(→P. 141)



* Brake hold operated indicator (→P. 125)



ECT PWR indicator
(→P. 119)



ECT SNOW indicator
(→P. 119)



(if equipped)

SPORT mode indicator
(→P. 168)



(if equipped)

COMFORT mode indicator
(→P. 168)



(if equipped)

HEIGHT HIGH indicator
(→P. 168)



(U.S.A.)

Parking brake indicator
(→P. 123)



(CANADA)

Parking brake indicator
(→P. 123)



(without touch screen)

SRS airbag on-off indicator
(→P. 85)

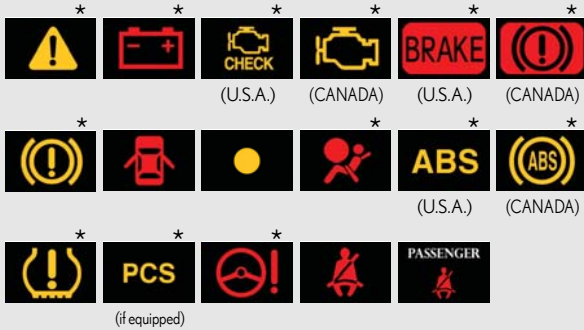


(with touch screen)

SRS airbag on-off indicator
(→P. 85)

■ Warning lights

Warning lights inform the driver of malfunctions in any of the vehicle's systems. (→P. 570)



*: These lights turn on when the engine switch is turned to IG-ON mode to indicate that a system check is being performed. They will turn off after the engine is started, or after a few seconds. There may be a malfunction in a system if a light does not come on, or if the lights do not turn off. Have the vehicle inspected by your Lexus dealer.

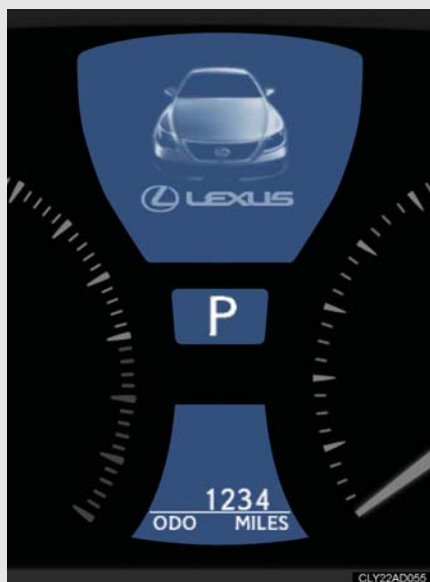
⚠ CAUTION

■ If a safety system warning light does not come on

Should a safety system light such as ABS and the SRS airbag warning light not come on when you start the engine, this could mean that these systems are not available to help protect you in an accident, which could result in death or serious injury. Have the vehicle inspected by your Lexus dealer immediately if this occurs.

Multi-information display

The multi-information display presents the driver with a variety of driving-related data, including the current outside air temperature.



- Trip information (→P. 135)

Displays driving range, fuel consumption and other cruising related information.

- Shift position and shift range (→P. 118)

- Intuitive parking assist-sensor display (if equipped) (→P. 159)

Automatically displayed when using intuitive parking assist-sensor.

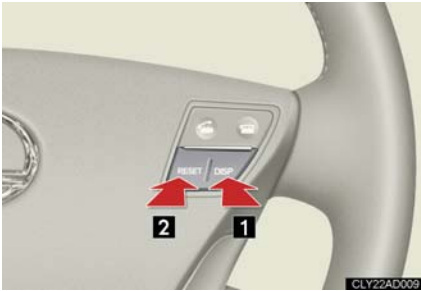
- Dynamic radar cruise control display (if equipped) (→P. 149)

Automatically displayed when using dynamic radar cruise control.

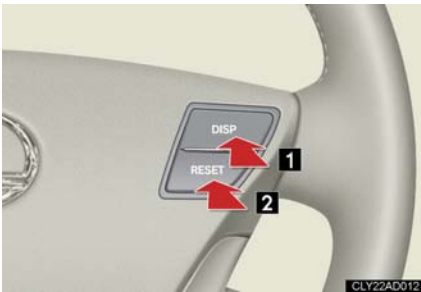
- Warning messages (→P. 577)

Automatically displayed when a malfunction occurs in one of the vehicle's systems.

Trip information



► Type A



► Type B

Display items can be switched by pushing the DISP switch.

- 1 DISP switch
- 2 RESET switch

■ Outside temperature

Displays the outside air temperature.

The temperature range that can be displayed is from -40°F (-40°C) to 122°F (50°C).

■ Driving range

Displays the estimated maximum distance that can be driven with the quantity of fuel remaining.

This distance is computed based on your average fuel consumption. As a result, the actual distance that can be driven may differ from that displayed.

■ **Average fuel consumption**

Displays the average fuel consumption since the function was reset.

The function can be reset by pushing the RESET switch when the average fuel consumption is displayed.

■ **Current fuel consumption**

Displays the current rate of fuel consumption.

■ **Average fuel consumption after refueling**

Displays the average fuel consumption since the vehicle was last refueled.

■ **Distance after refueling**

Displays the distance the vehicle has been driven since the vehicle was last refueled.

■ **Driving time**

Displays the driving time since it was last reset.

The function can be reset by pushing the RESET switch when the driving time is displayed.

■ **Average vehicle speed**

Displays the average vehicle speed since the engine was started or the function was reset.

The function can be reset by pushing the RESET switch when the average vehicle speed is displayed.

■ **Tire inflation pressure**

Displays inflation pressure of each tire. There is no correlation between the order of the displayed values and the tire positions.

It may take a few minutes to display the tire inflation pressure after the engine switch is turned to IG-ON mode. It may also take a few minutes to display the tire inflation pressure after inflation pressure has been adjusted.

■ System check display

After switching the engine switch to IG-ON mode, SYSTEM CHECK is displayed while system operation is checked. When the system check is complete, the normal screen will return.

■ To turn off the background images on the trip information screen

When information other than the current fuel consumption is displayed, push the DISP switch for longer than 1 second.

Pushing the switch again for longer than 1 second turns on the background images.

■ Tire inflation pressure

Tire inflation pressure changes with temperature. The displayed values may also be different from the values measured using other gauges.

■ Liquid crystal display

Small spots or light spots may appear on the display. This phenomenon is characteristic of liquid crystal displays, and there is no problem to continue using the display.

NOTICE

■ The multi-information display at low temperatures

Allow the interior of the vehicle to warm up before using the liquid crystal information display. At extremely low temperatures, the information display monitor may respond slowly, and display changes may be delayed.