

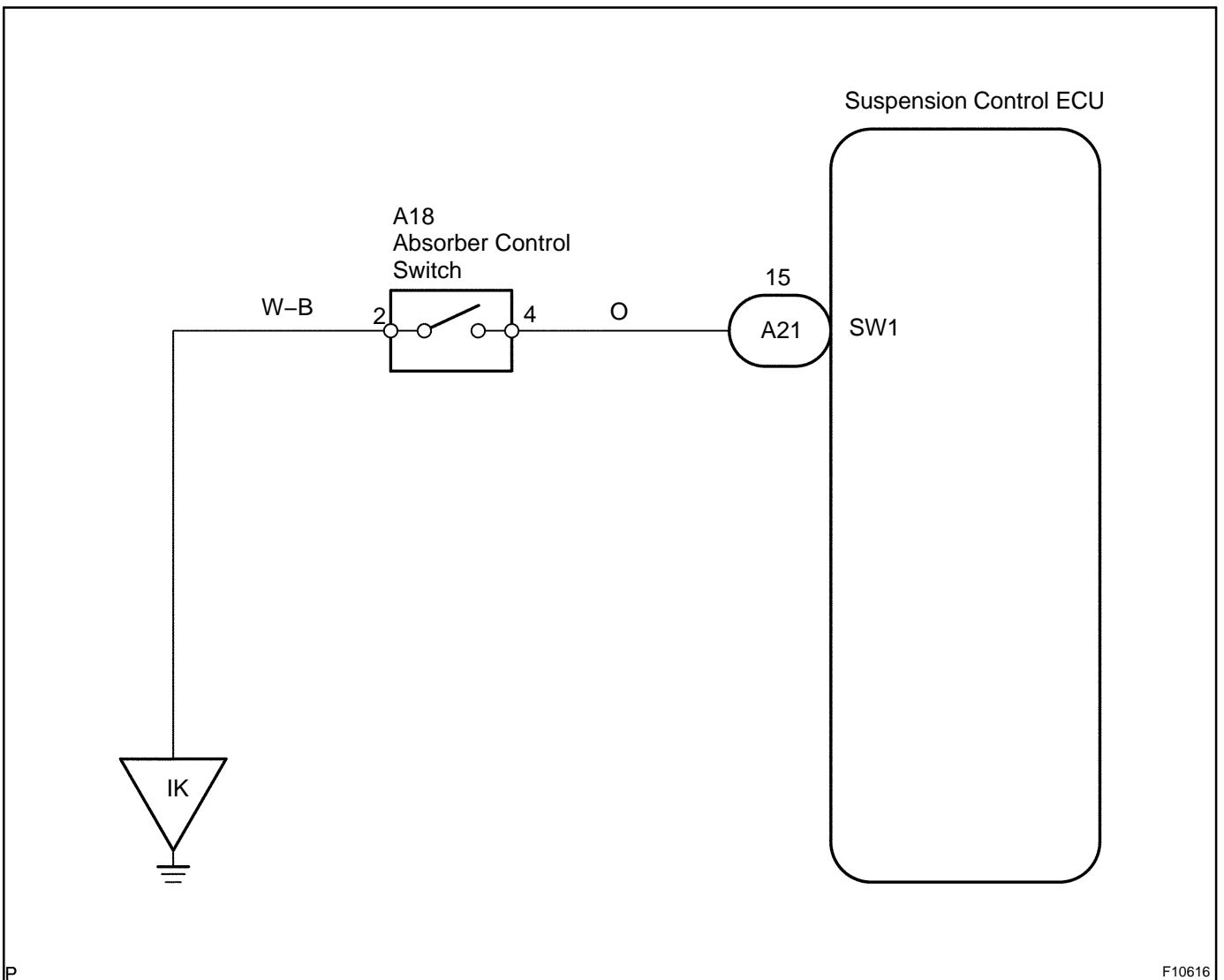
DTC	C1787 / 87	Absorber Control Switch Circuit
------------	-------------------	--

CIRCUIT DESCRIPTION

The absorber control switch is to select the attenuation modes of the shock absorber. 2 levels of attenuation "SPORT" and "NORM" are available to select.

DTC No.	DTC Detecting Condition	Trouble Area
C1787 / 87	Absorber control switch signal does not change	<ul style="list-style-type: none"> • Absorber control switch • Absorber control switch circuit • Suspension control ECU

WIRING DIAGRAM

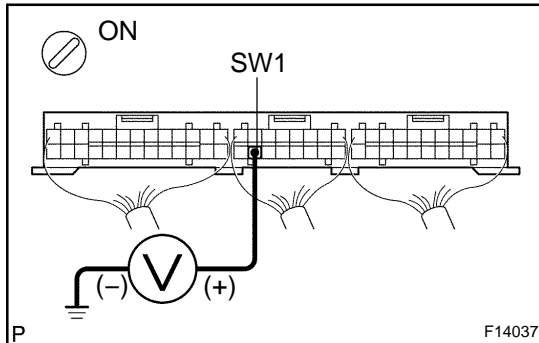


P

F10616

INSPECTION PROCEDURE

- 1 Check voltage between terminal SW1 of suspension control ECU connector and body ground.**

**PREPARATION:**

Remove the suspension control ECU with the connectors still connected.

CHECK:

- Turn the ignition switch ON.
- Measure voltage between terminal SW1 of the suspension control ECU connector and body ground when the absorber control switch is pressed to "NORM" side and "SPORT" side.

OK:

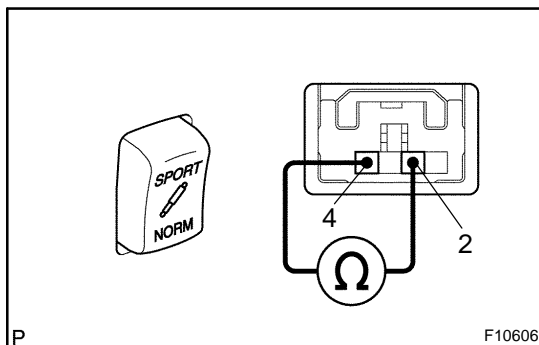
Switch position	Voltage
NORM	10 – 14 V
SPORT	0 – 1.2 V

OK

Proceed to next circuit inspection shown on problem symptoms table (See page [DI-316](#)).

NG

- 2 Check absorber control switch.**

**PREPARATION:**

- Remove the absorber control switch.
- Disconnect the absorber control switch connector.

CHECK:

Measure resistance between terminals 2 and 4 of the absorber control switch connector when the absorber control switch is in each position.

OK:

Switch position	Resistance
NORM	$\infty \Omega$ (Open)
SPORT	0 Ω (Continuity)

NG

Replace absorber control switch.

OK

3	Check for open and short circuit in harness and connector between suspension control ECU and switch, switch and body ground (See page IN-34).
----------	--

NG

Repair or replace harness or connector.

OK

Check and replace suspension control ECU.