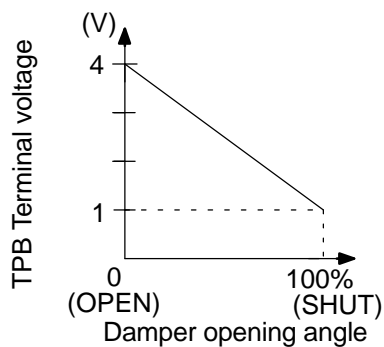


<b>DTC</b>	<b>B1435/35</b>	<b>Cool Air Bypass Damper Position Sensor Circuit (Passenger Side)</b>
------------	-----------------	--

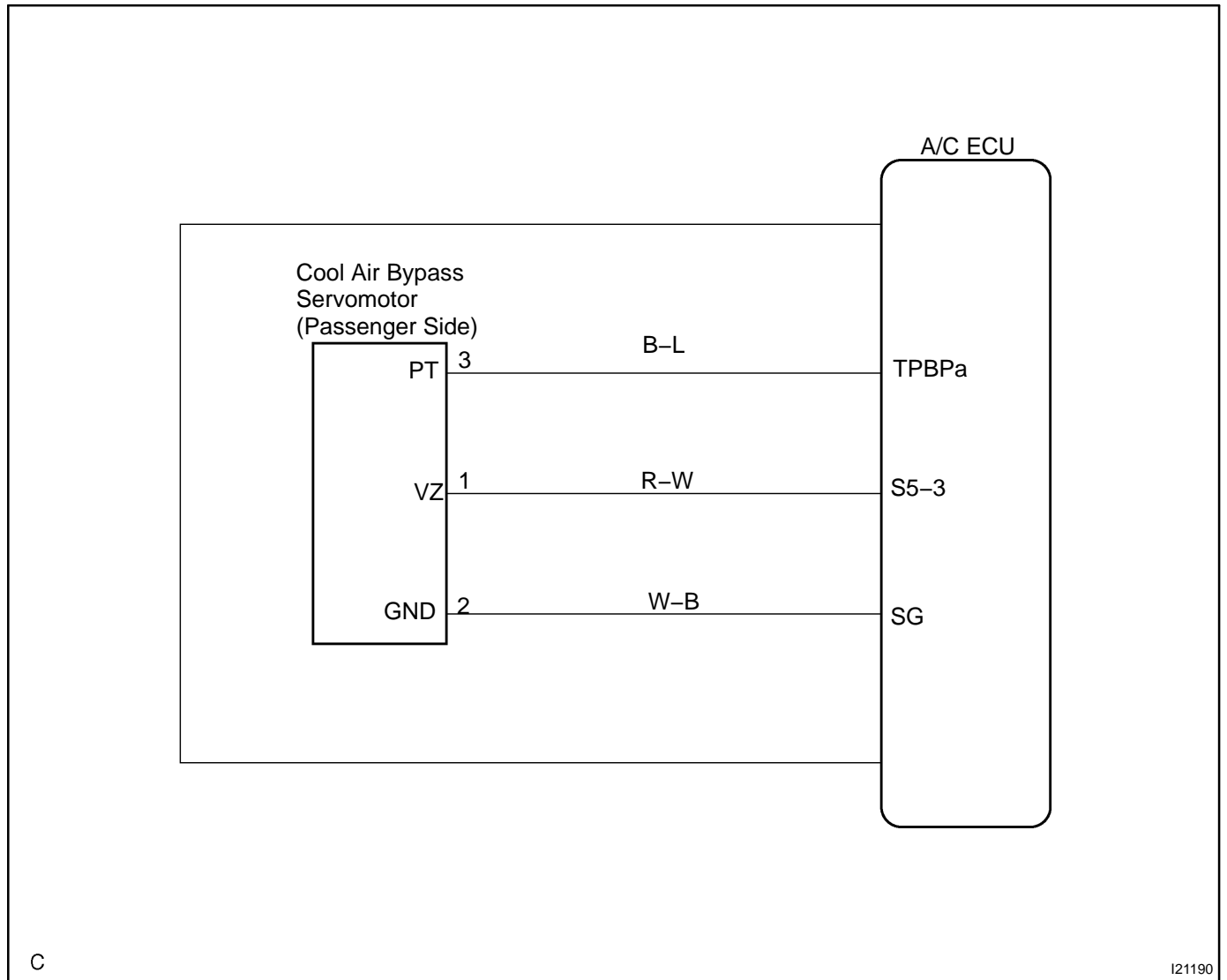
## CIRCUIT DESCRIPTION



This sensor detects the position of the cool air bypass damper and sends the appropriate signals to the A/C ECU. The position sensor is built into the cool air bypass damper control servomotor assembly.

DTC No.	Detection Item	Trouble Area
B1435/35	Short to ground or to power source circuit in cool air bypass damper position sensor circuit.	<ul style="list-style-type: none"> <li>• Cool air bypass damper position sensor.</li> <li>• Harness or connector between cool air bypass damper control servomotor assembly and A/C ECU.</li> <li>• A/C ECU.</li> </ul>

# WIRING DIAGRAM

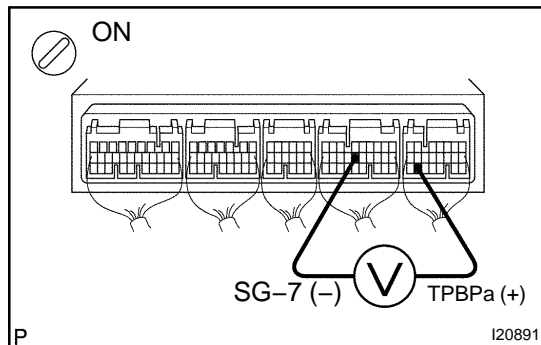


C

I21190

## INSPECTION PROCEDURE

- 1 Check voltage between terminals TPBPa and SG-7 of A/C ECU connector.

**PREPARATION:**

Remove A/C ECU with connectors still connected.

**CHECK:**

- Turn ignition switch to ON.
- Change the set temperature to activate the cool air bypass damper control servomotor, and measure voltage between terminals TPBPa and SG-7 of A/C ECU every time the set temperature is changed.

**OK:**

Set Temperature	Voltage
Max. cool	3.5 - 4.5 V
Max. hot	0.5 - 1.8 V

**HINT:**

As the set temperature increases, the voltage decreases.

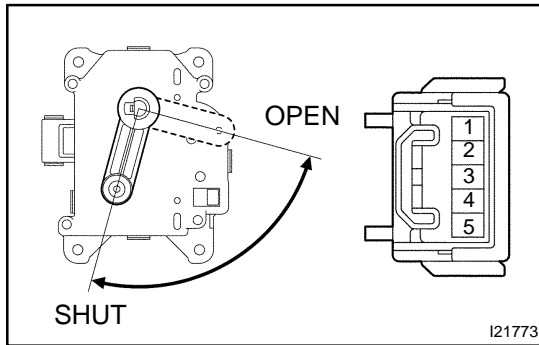
**NG**

Go to step 2.

**OK**

Proceed to next circuit inspection shown on problem symptoms table (See page [DI-1806](#)). However, if DTC B1435/35 is displayed, check and replace A/C ECU.

## 2 Check cool air bypass damper position sensor.



### PREPARATION:

Remove cool air bypass damper control servomotor (See page [AC-78](#)).

### CHECK:

Measure resistance between terminals 1 and 2 of cool air bypass damper control servomotor assembly connector.

### OK:

**Resistance : 4.2 – 7.2 kΩ**

### CHECK:

While operating cool air bypass damper control servomotor, follow the procedure on page [DI-1867](#) and measure resistance between terminals 2 and 3 of cool air bypass damper control servomotor assembly connector.

### OK:

Damper Position	Resistance
Max. Cool	3.33 – 4.03 kΩ
Max. Hot	0.80 – 1.60 kΩ

### HINT:

As the cool air bypass damper control servomotor moves from the cool side to the hot side, the resistance decreases.

**NG**

**Replace cool air bypass damper control servomotor assembly.**

**OK**

## 3 Check harness and connector between A/C ECU and cool air bypass damper control servomotor assembly (See page [IN-34](#)).

**NG**

**Repair or replace harness or connector.**

**OK**

**Check and replace A/C ECU.**