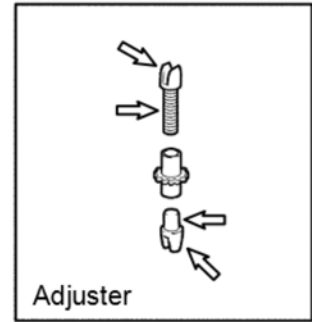
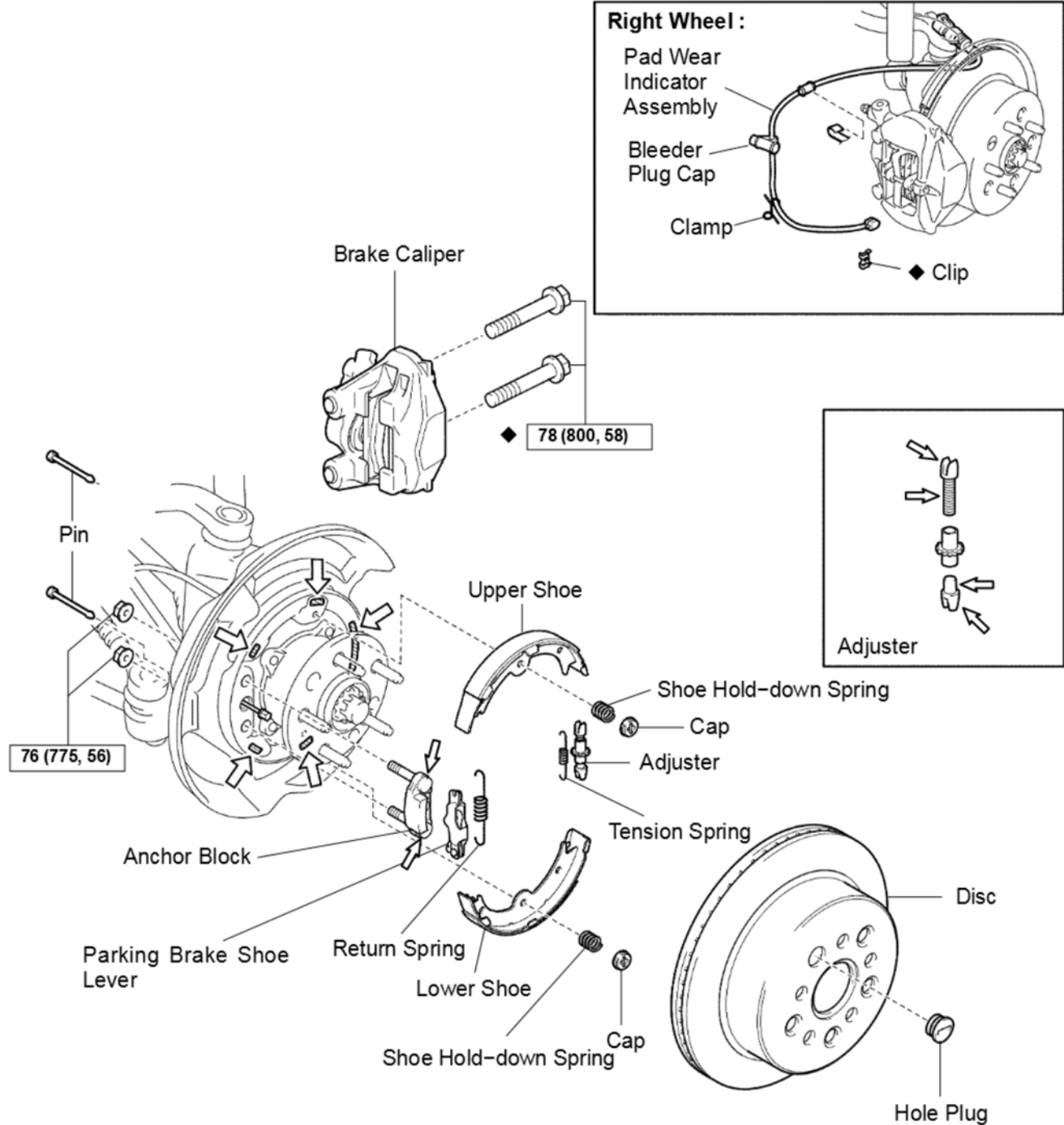
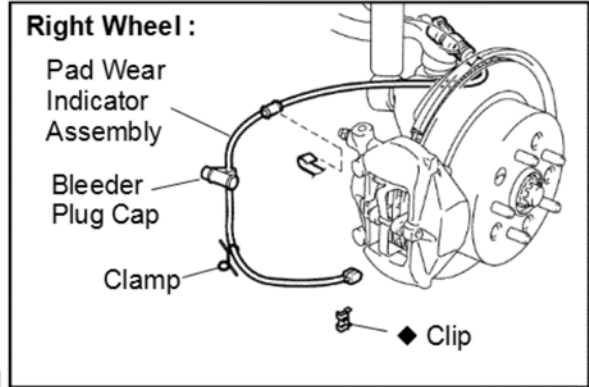


PARKING BRAKE COMPONENTS

BR0CU-07

Left Wheel:

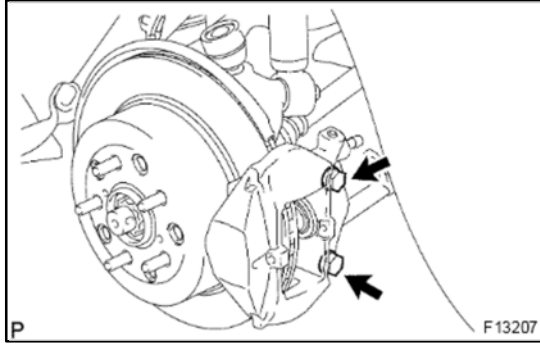


N·m (kgf·cm, ft·lbf) : Specified torque

◆ Non-reusable part

↶ High temperature grease

P



DISASSEMBLY

1. REMOVE REAR WHEEL

2. REMOVE BRAKE CALIPER ASSEMBLY

(a) Right wheel:

Disconnect the pad wear indicator wire harness from the clamp.

(b) Remove the 2 bolts and brake caliper assembly.

Torque: 78 N·m (800 kgf·cm, 58 ft·lbf)

HINT:

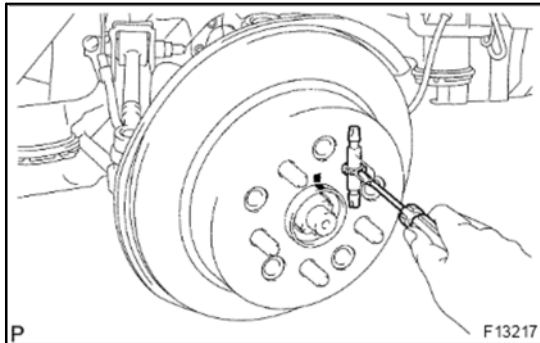
Do not disconnect the flexible hose from the brake caliper.

(c) Suspend the brake caliper securely. Make sure the hose is not stretched.

3. REMOVE DISC

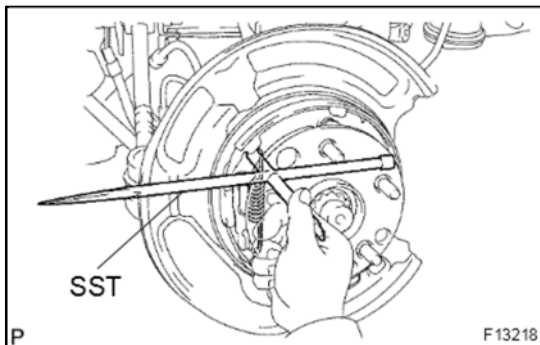
(a) Place matchmarks on the disc and rear axle hub.

(b) Remove the disc.



HINT:

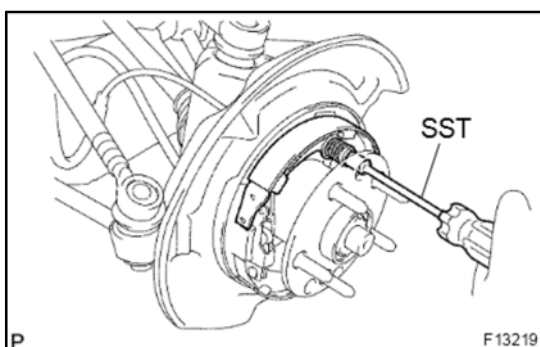
If the disc cannot be removed easily, contract the shoe adjuster until the wheel turns freely.



4. REMOVE SHOE RETURN SPRING

Using SST, remove the shoe return spring.

SST 09703-30010



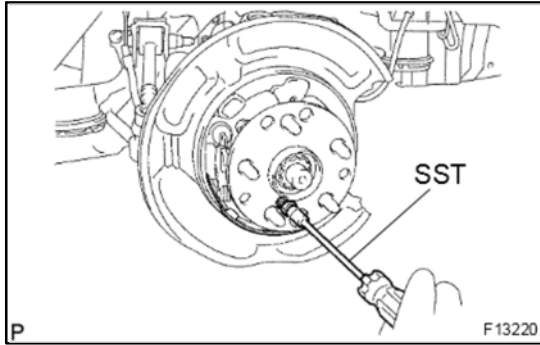
5. REMOVE UPPER SHOE, ADJUSTER AND TENSION SPRING

(a) Using SST, remove the cap, shoe hold-down spring and pin.

SST 09718-00010

(b) Disconnect the tension spring from the upper shoe.

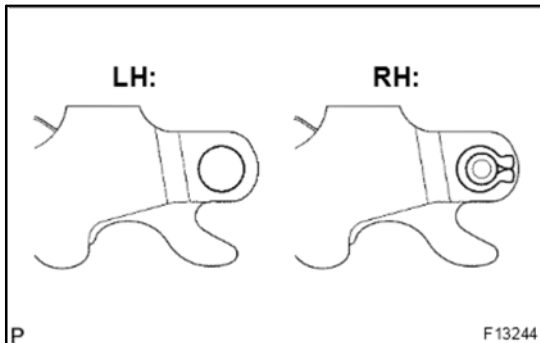
(c) Remove the upper shoe and shoe adjuster.

**6. REMOVE LOWER SHOE**

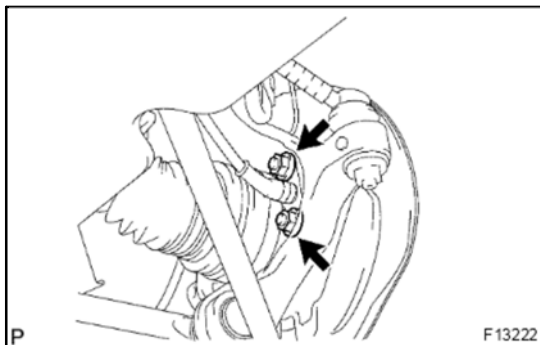
- (a) Remove the tension spring from the lower shoe.
- (b) Using SST, remove the cap, shoe hold-down spring and pin.
SST 09718-00010
- (c) Remove the lower shoe.

**7. REMOVE PARKING BRAKE SHOE LEVER**

Disconnect the parking brake cable, and remove the parking brake shoe lever.

**NOTICE:**

At the time of reassembly, carefully to distinguish the parking brake shoe lever for RH from the one for LH.

**8. REMOVE ANCHOR BLOCK**

Remove the 2 nuts and anchor block from the rear axle carrier.
Torque: 76 N·m (775 kgf·cm, 56 ft·lbf)