

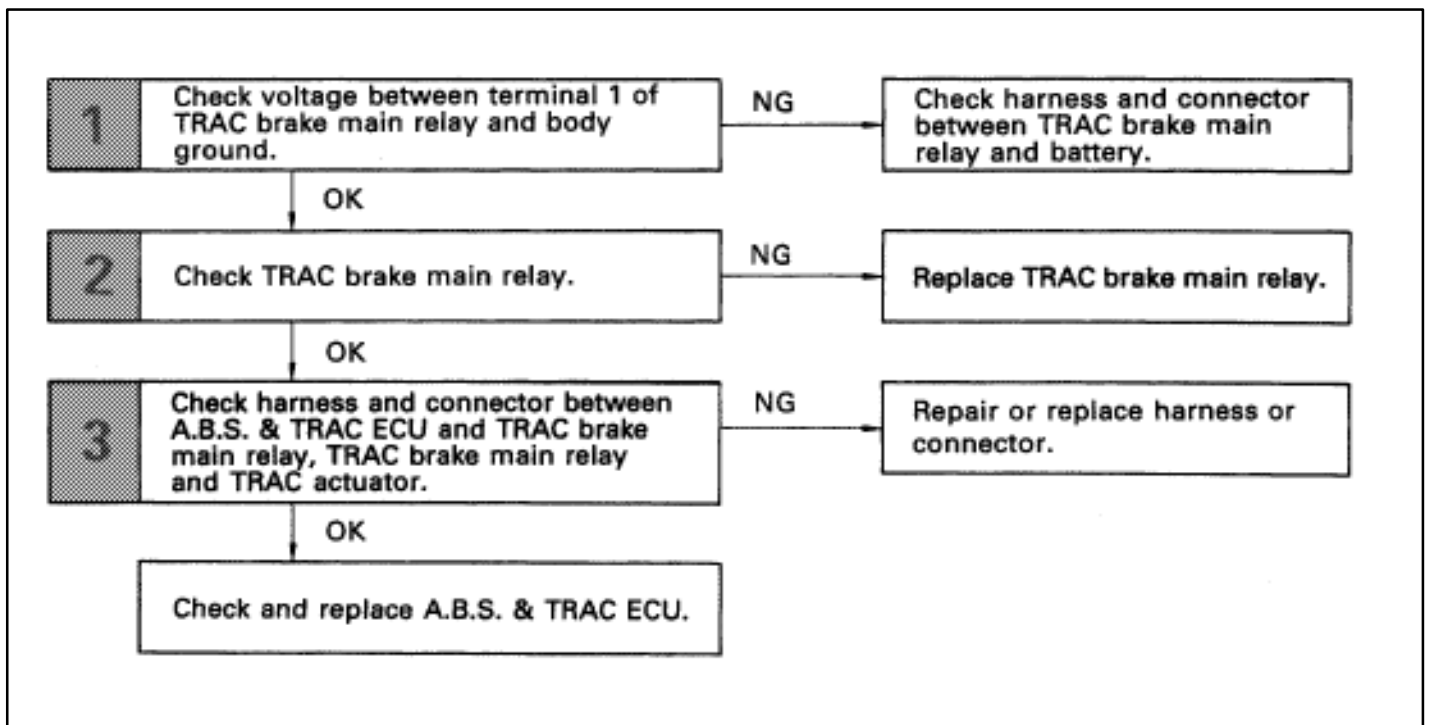
Diag. Code	13, 14	TRAC Throttle Relay Circuit
-------------------	---------------	------------------------------------

CIRCUIT DESCRIPTION

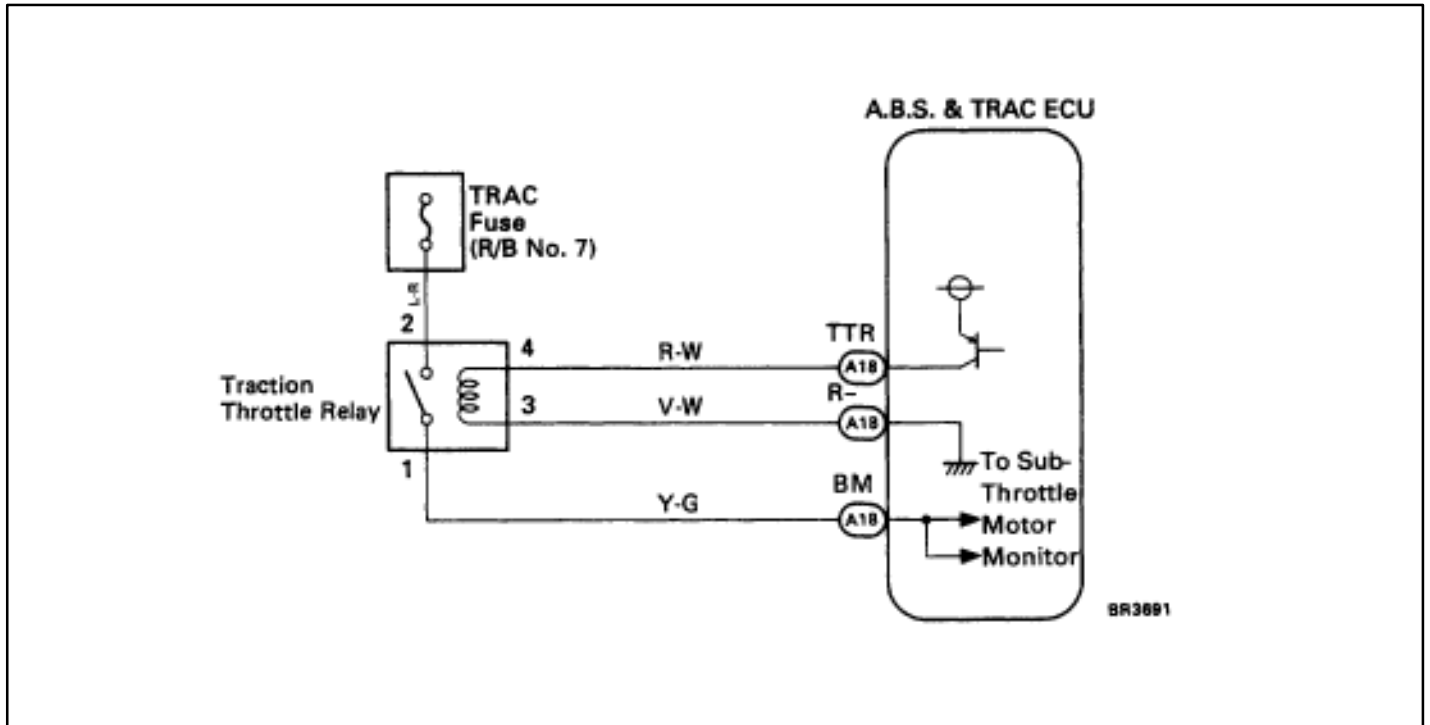
This relay circuit supplies power to the sub-throttle motor through the ECU.

When the ignition switch is turned on, the relay goes on. If trouble occurs in this relay circuit, the ECU cuts off current to the TRAC throttle relay and prohibits the traction control (Fail safe function).

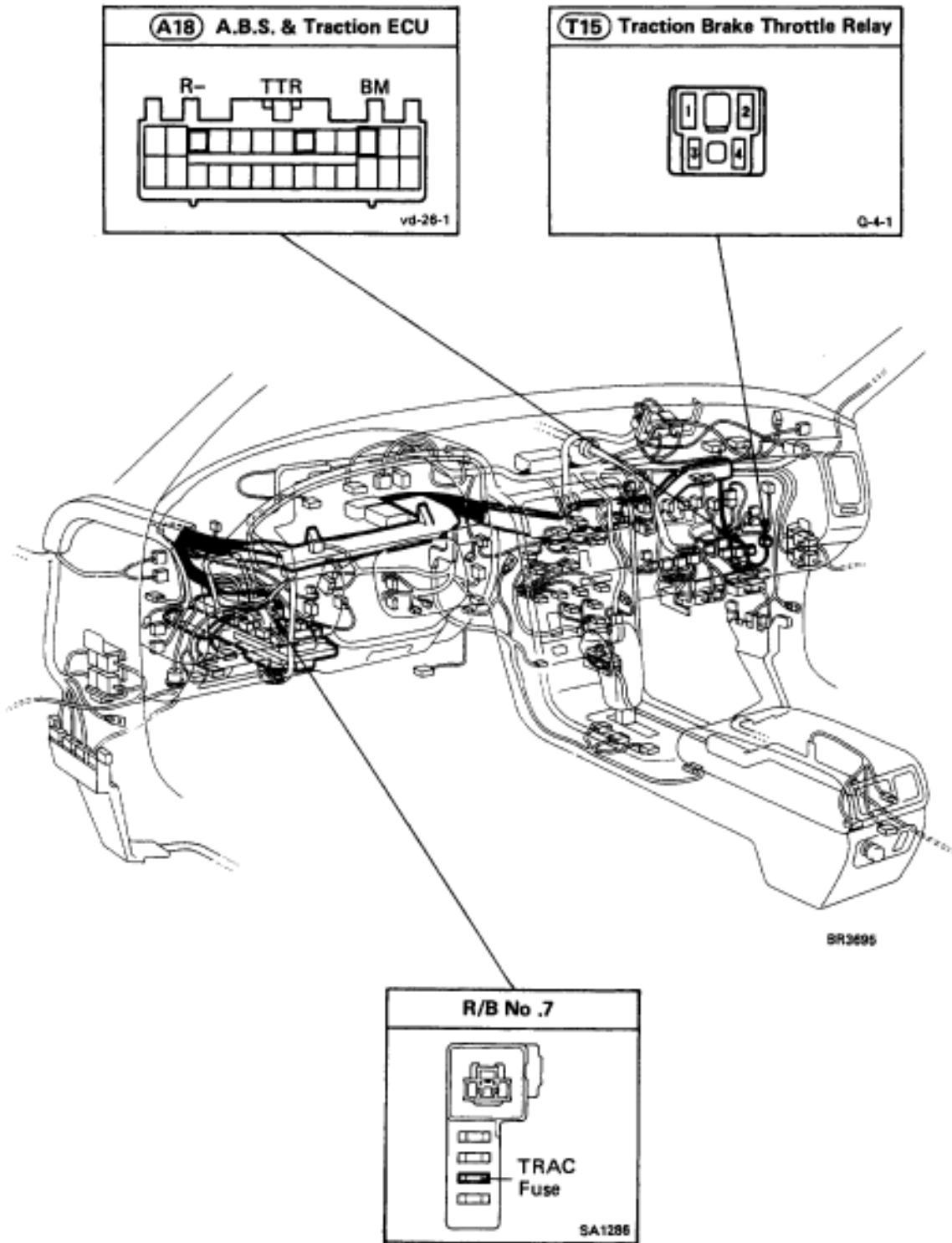
Code No.	Diagnosis	Trouble area
13	When the ECU is sending an ON signal to the TRAC throttle relay, terminal BTH of the ECU is 0 V.	TRAC throttle relay (Remains OFF). Harness or connector between TRAC throttle relay and ECU (open or short in TTR, R-, BTH harness). Harness or connector between battery and TRAC throttle relay (open, short). ECU
14	When the ECU is not sending an ON signal to the TRAC throttle relay, terminal BTH of the ECU is battery voltage.	TRAC throttle relay (Remains ON). Harness or connector between TRAC throttle relay and ECU (+B short in TTR, BTH harness). ECU



WIRING DIAGRAM



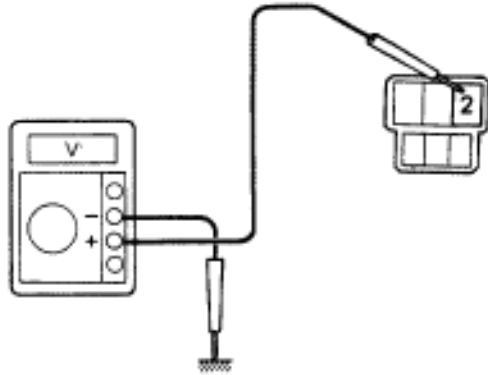
WIRING ROUTING



INSPECTION PROCEDURE

1

Check voltage between terminal 2 of TRAC throttle relay and body ground.



BR4323

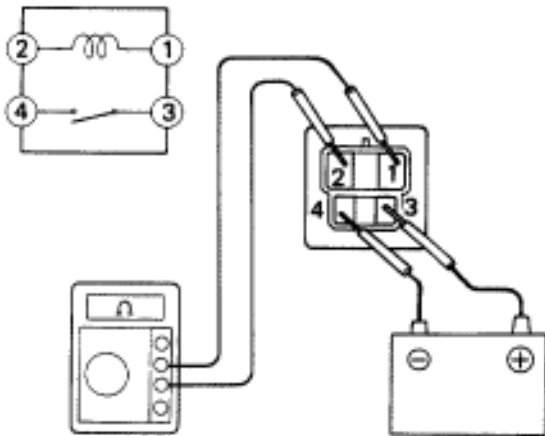
- P** Disconnect TRAC throttle relay connector.
- C** 1 Turn ignition switch on.
2 Measure voltage between terminal 2 of TRAC throttle relay harness side connector and body ground.
- OK** Voltage: **Battery voltage**

OK

NG Check and repair harness or connector between TRAC throttle relay and battery.

2

Check TRAC throttle relay.

BE1940
BR4324

- C** Check continuity between each terminal of TRAC throttle relay shown below.
- OK**
- | | |
|-------------------|------------|
| Terminals 3 and 4 | Continuity |
| Terminals 1 and 2 | Open |
- C** 1 Apply battery voltage between terminals 3 and 4.
2 Check continuity between terminals shown below.

OK

Terminals 1 and 2	Continuity
-------------------	------------

OK

NG Replace TRAC throttle relay.

3

Check harness and connector between ABS & TRAC ECU and TRAC throttle relay, (See page IN-27).

OK

NG Repair or replace harness or connector.

Check and replace ABS & TRAC ECU.