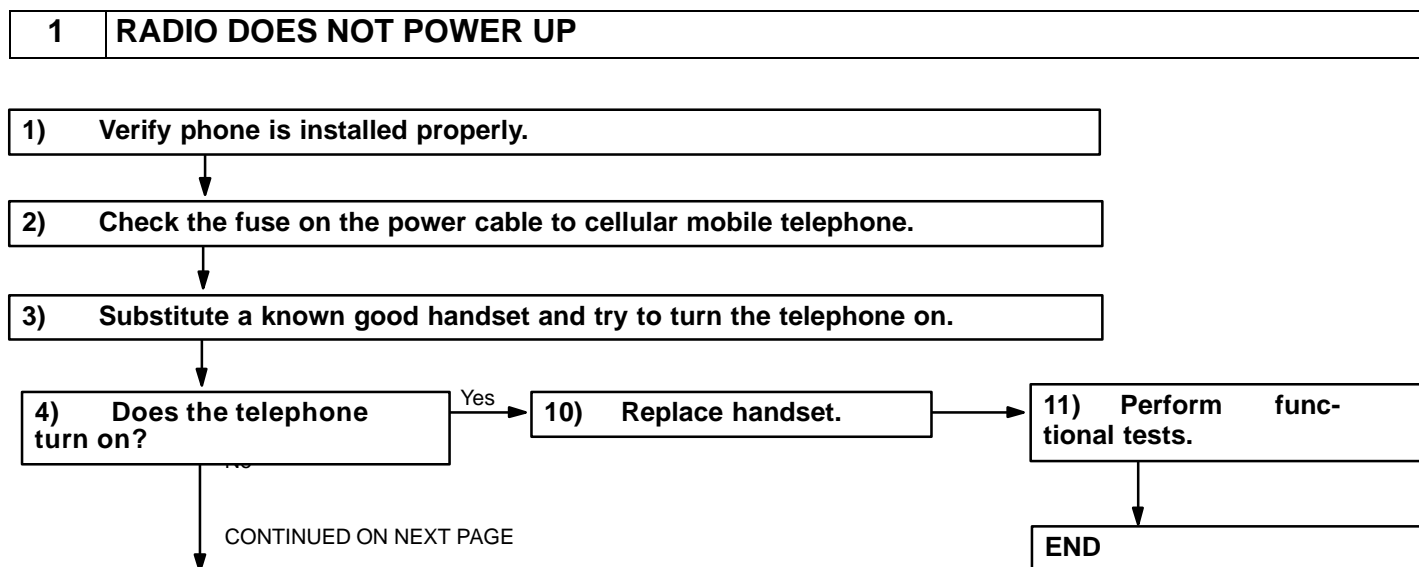


## Troubleshooting

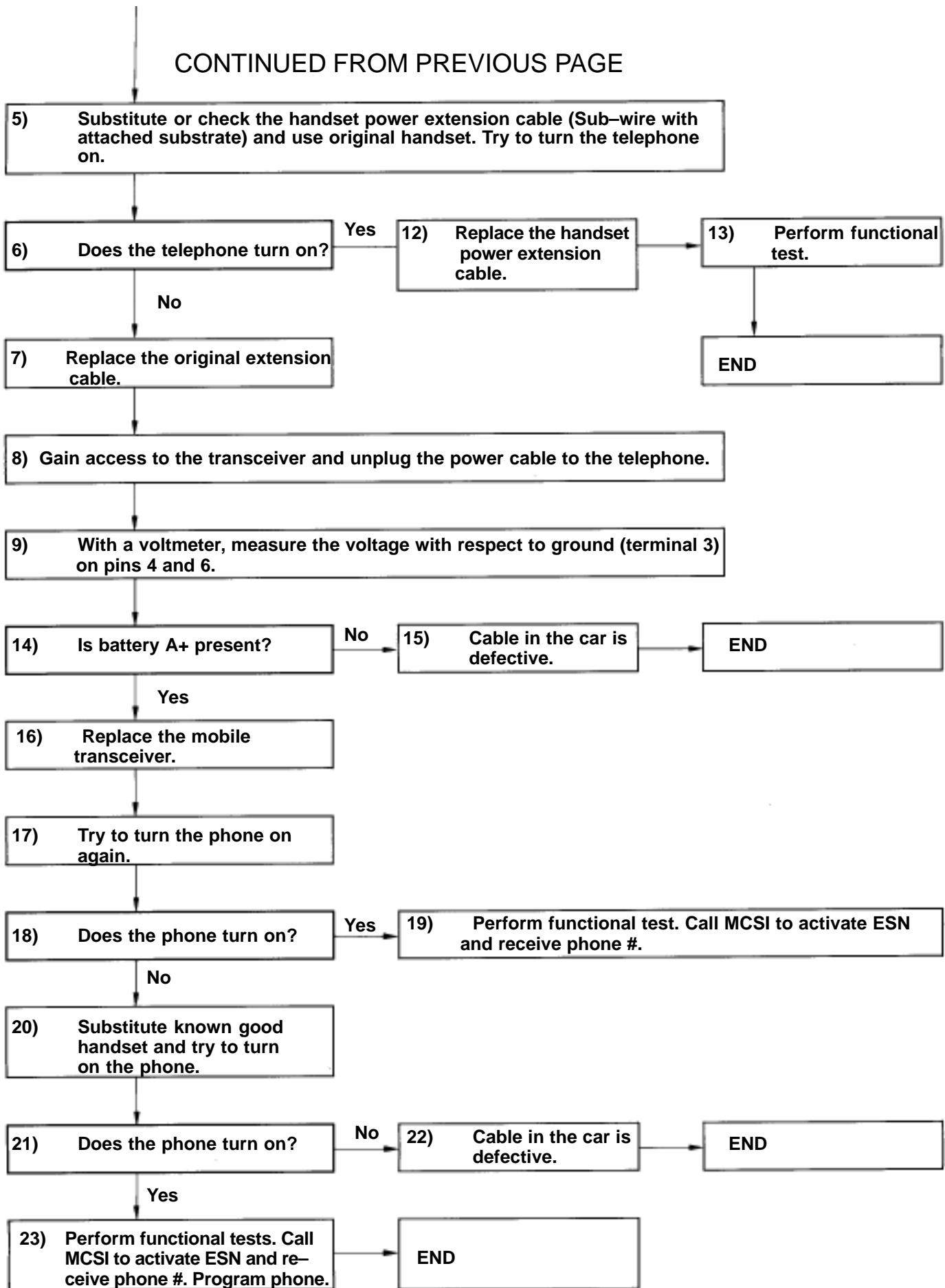
You can easily find the cause of trouble using the table shown below.

Chart No.	Trouble	See page
1	Radio does not power up.	BE-541
2	* "NO SVC" light stays on.	BE-543
3	* Static during calls/Dropped calls.	BE-545
4	Fast busy signal or recording received when placing calls.	BE-546
5	Dialing problems with controller.	BE-547
6	No hands free transmit audio.	BE-548
7	No hands free audio or tones from left rear speaker.	BE-549
8	No AM/FM radio out of left rear speaker.	BE-551
9	AM/FM radio does not mute during calls.	BE-552
10	Radio will not go into programming mode.	BE-553

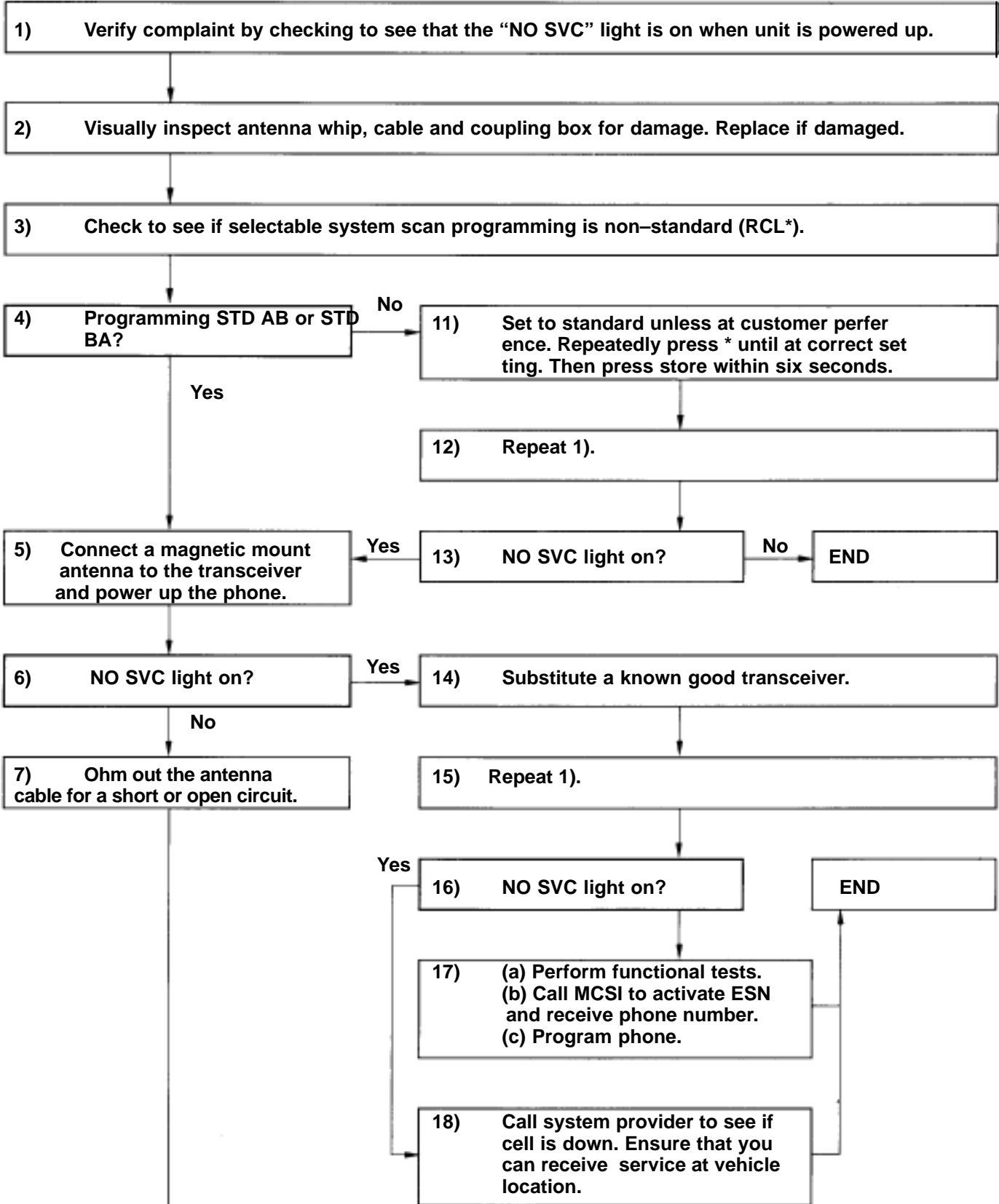
\*: These tests assume adequate cellular coverage at location of testing.



CONTINUED FROM PREVIOUS PAGE



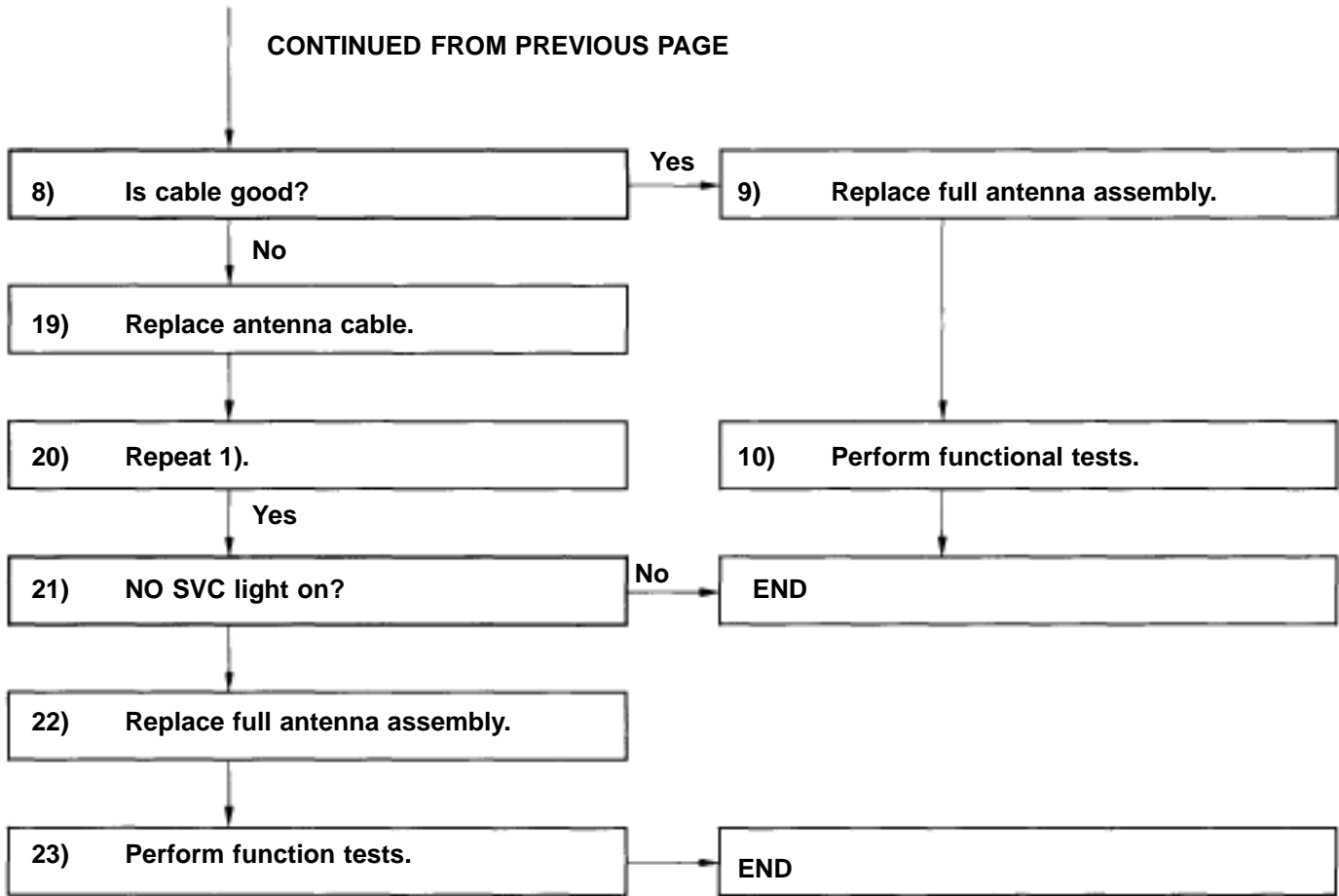
**2 "NO SVC" LIGHT\* STAYS ON**



CONTINUED ON NEXT PAGE

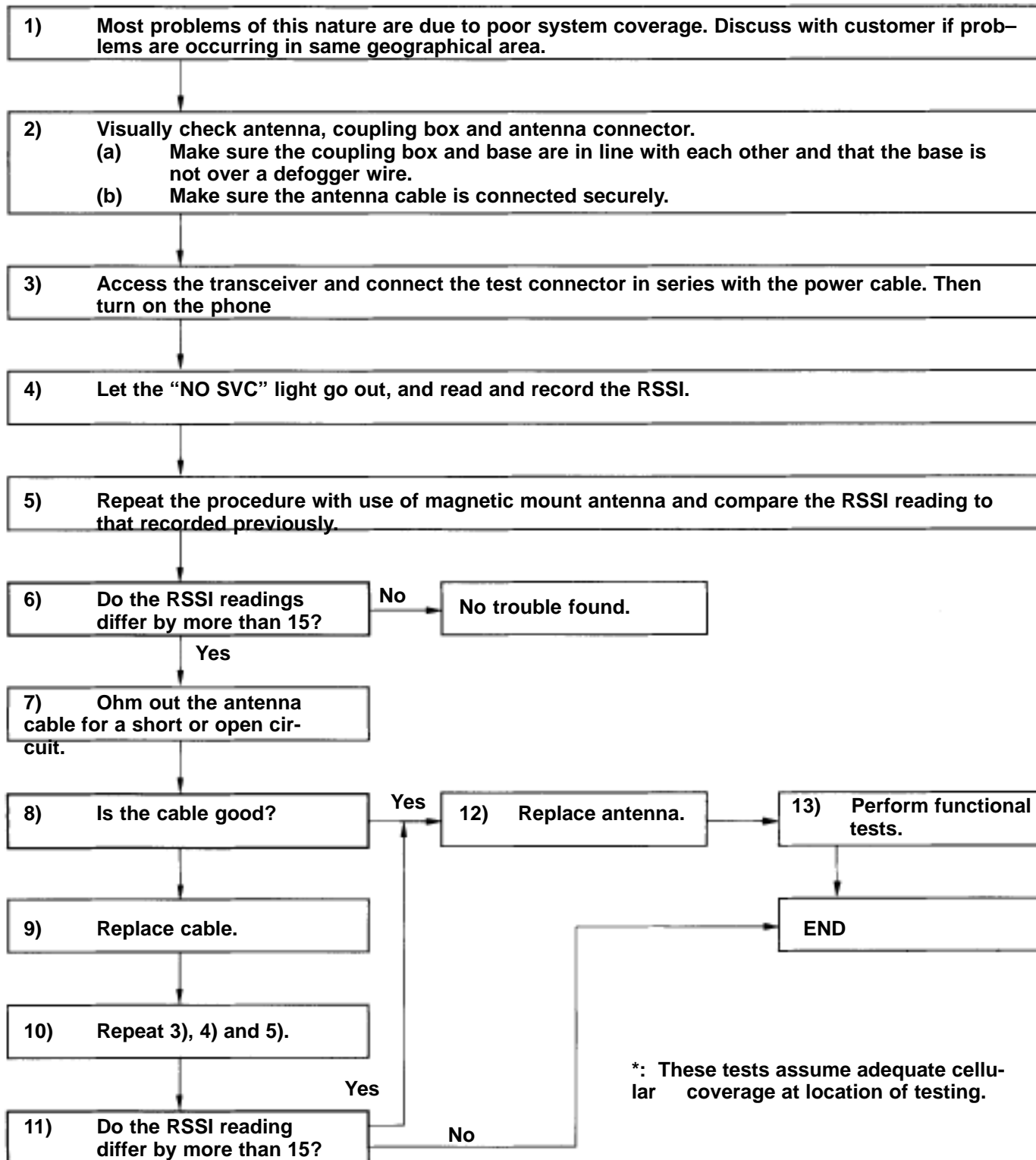
\*: These tests assume adequate cellular coverage at location of testing.

CONTINUED FROM PREVIOUS PAGE



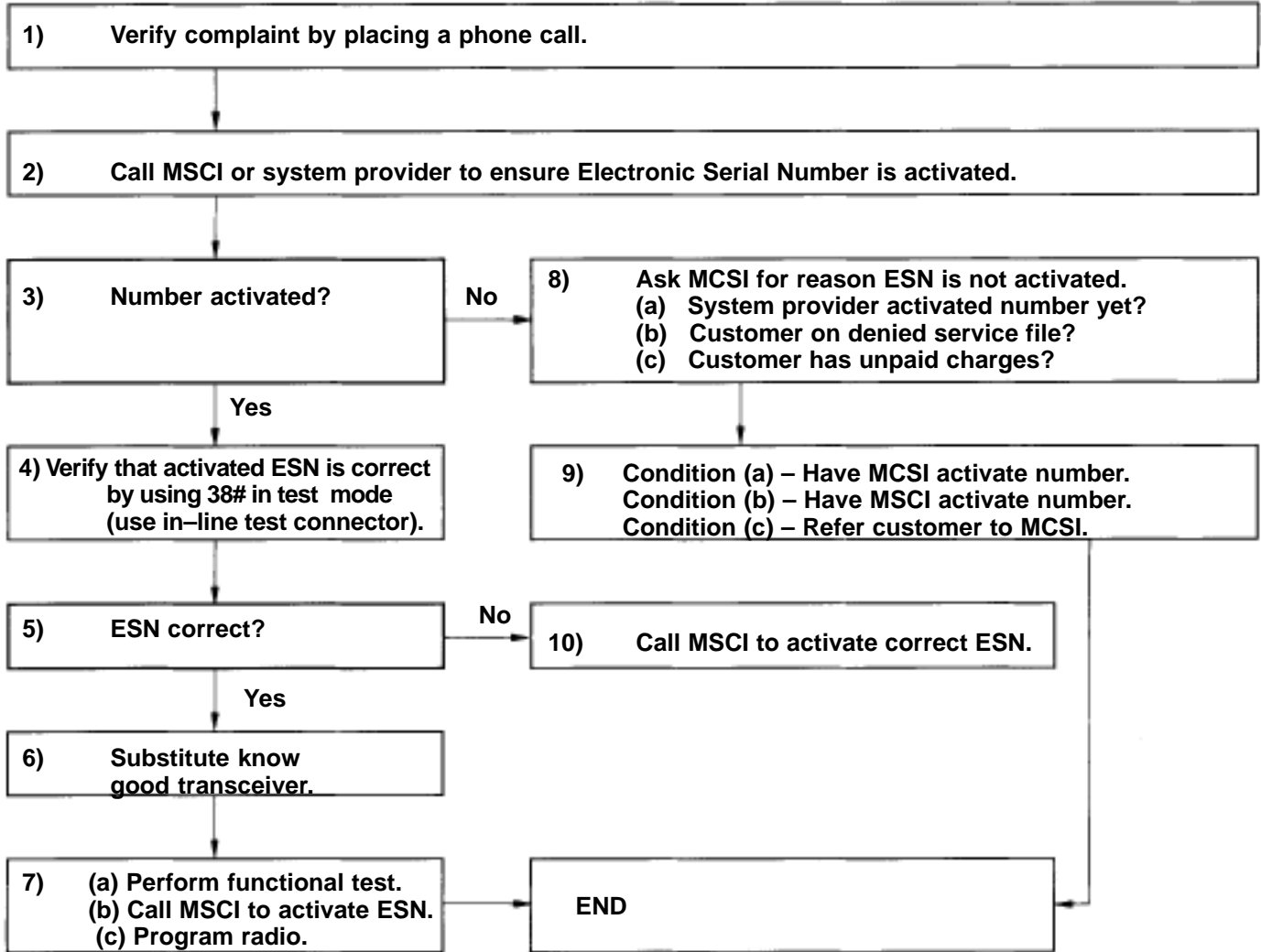
\*: These tests assume adequate cellular coverage at location of testing.

### 3 \*STATIC DURING CALLS/DROPPED CALLS

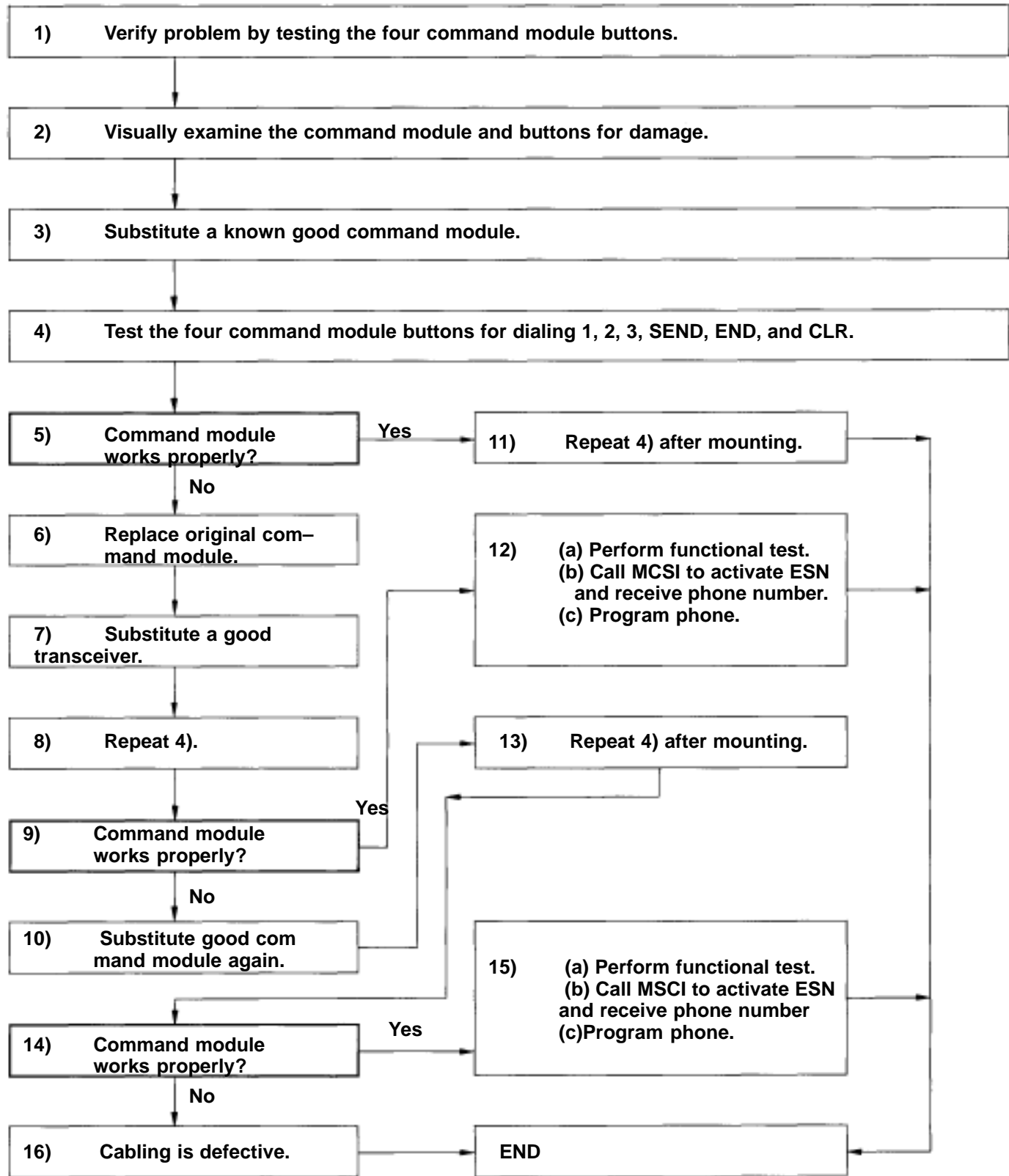


\*: These tests assume adequate cellular coverage at location of testing.

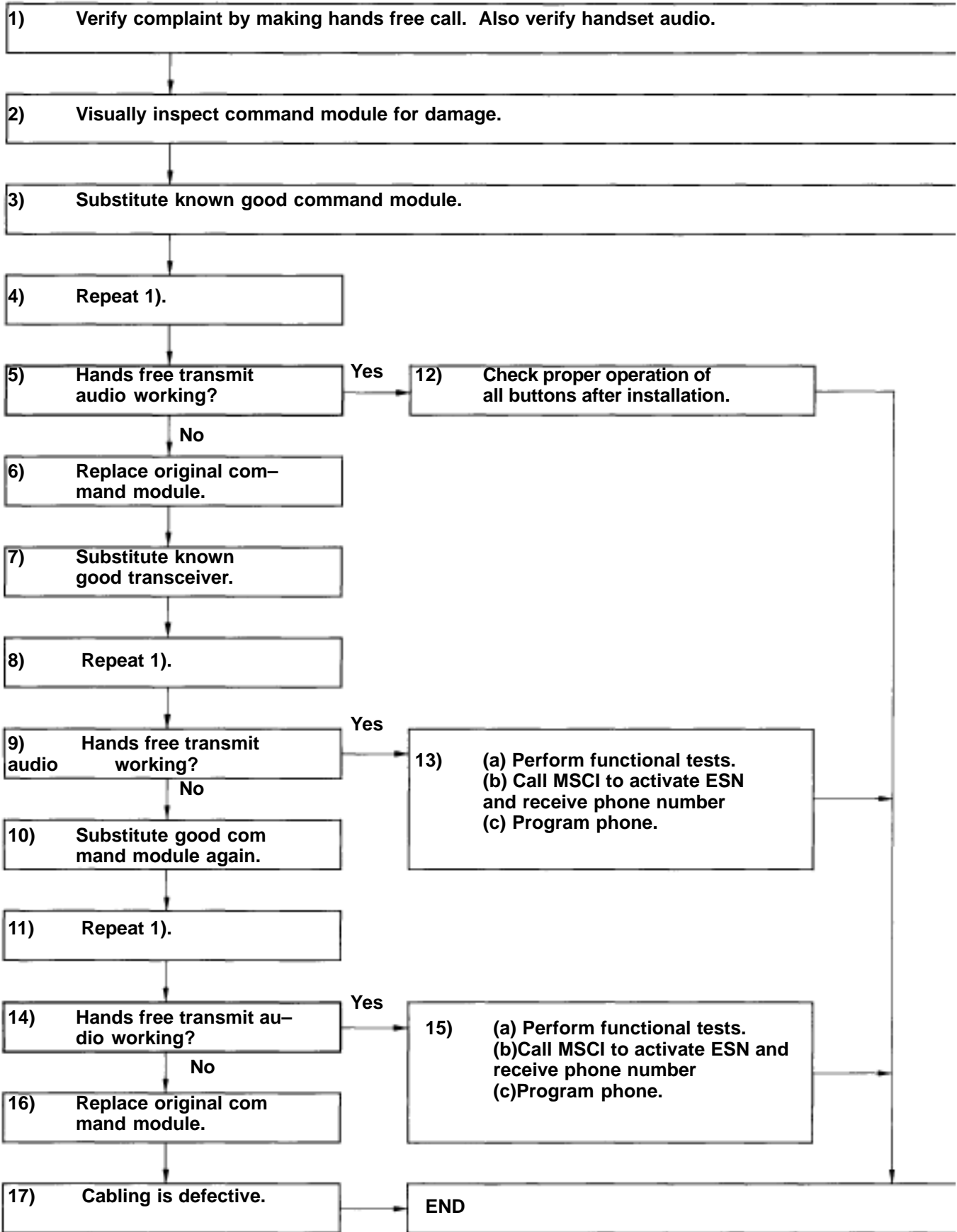
**4 FAST BUSY SIGNAL OR RECORDING RECEIVED WHEN PLACING CALLS**



**5 DIALING PROBLEMS WITH COMMAND MODULE**

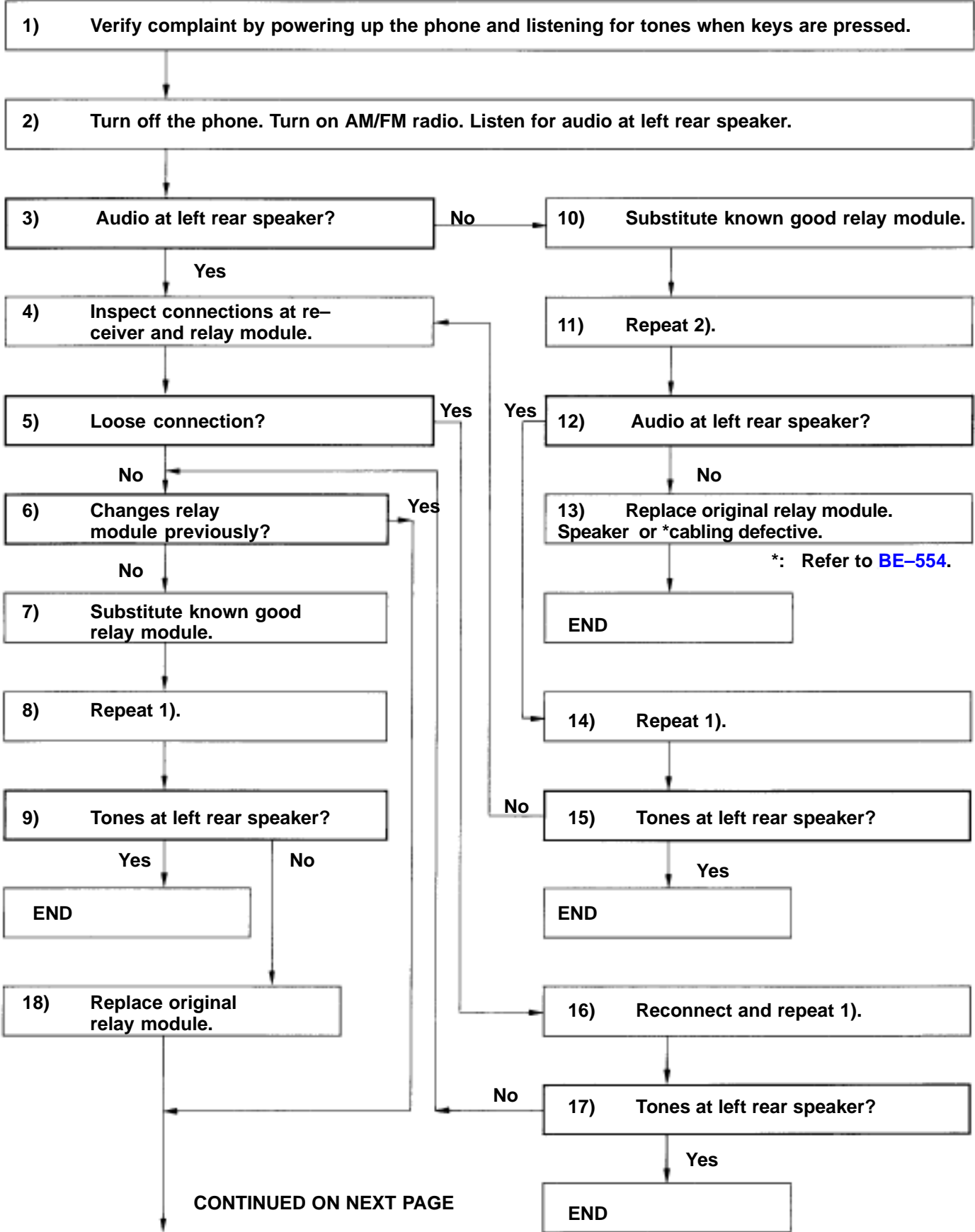


**6 NO HANDS FREE TRANSMIT AUDIO**



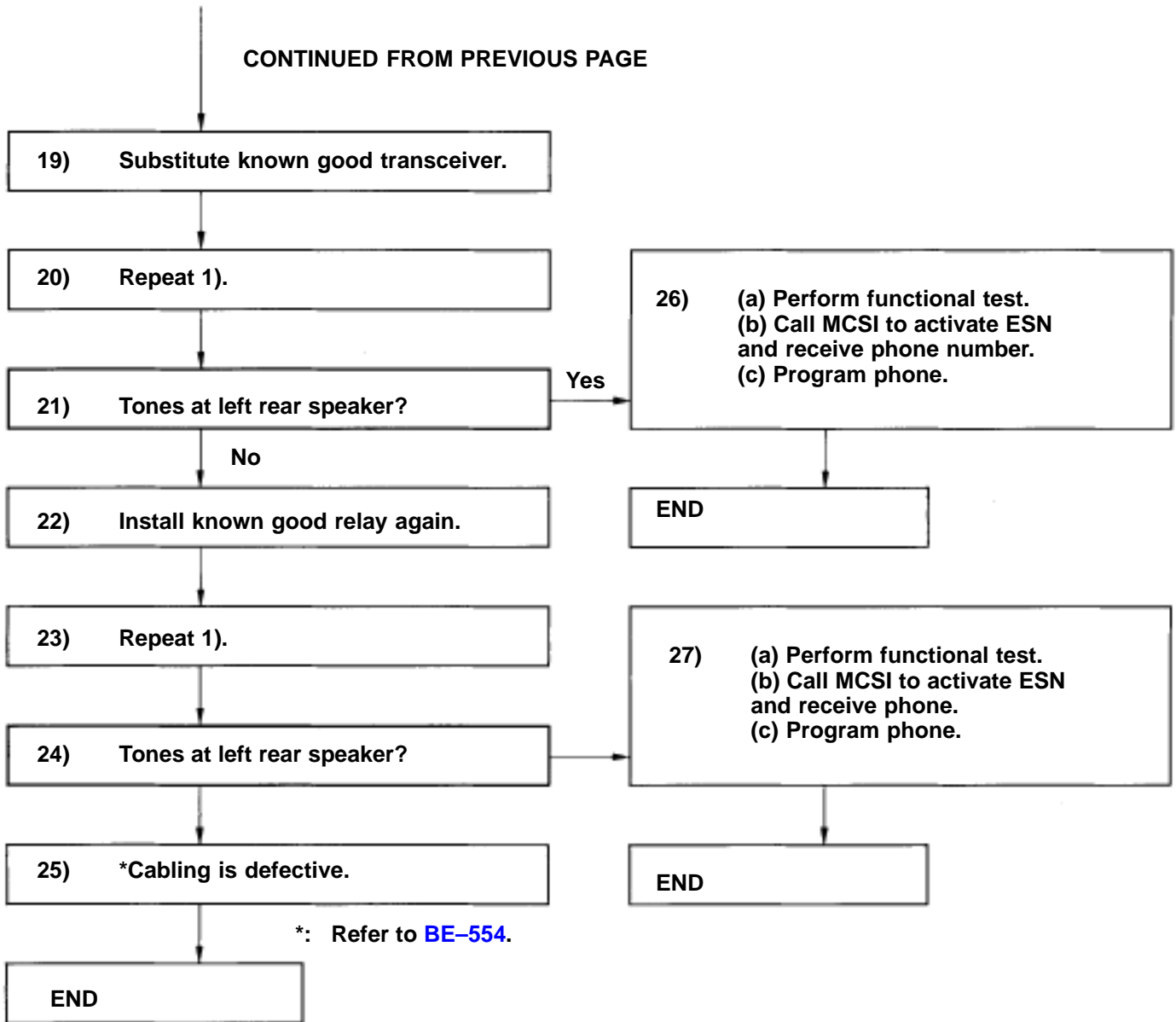


**7 NO HANDS FREE AUDIO OR TONES FROM LEFT REAR SPEAKER**

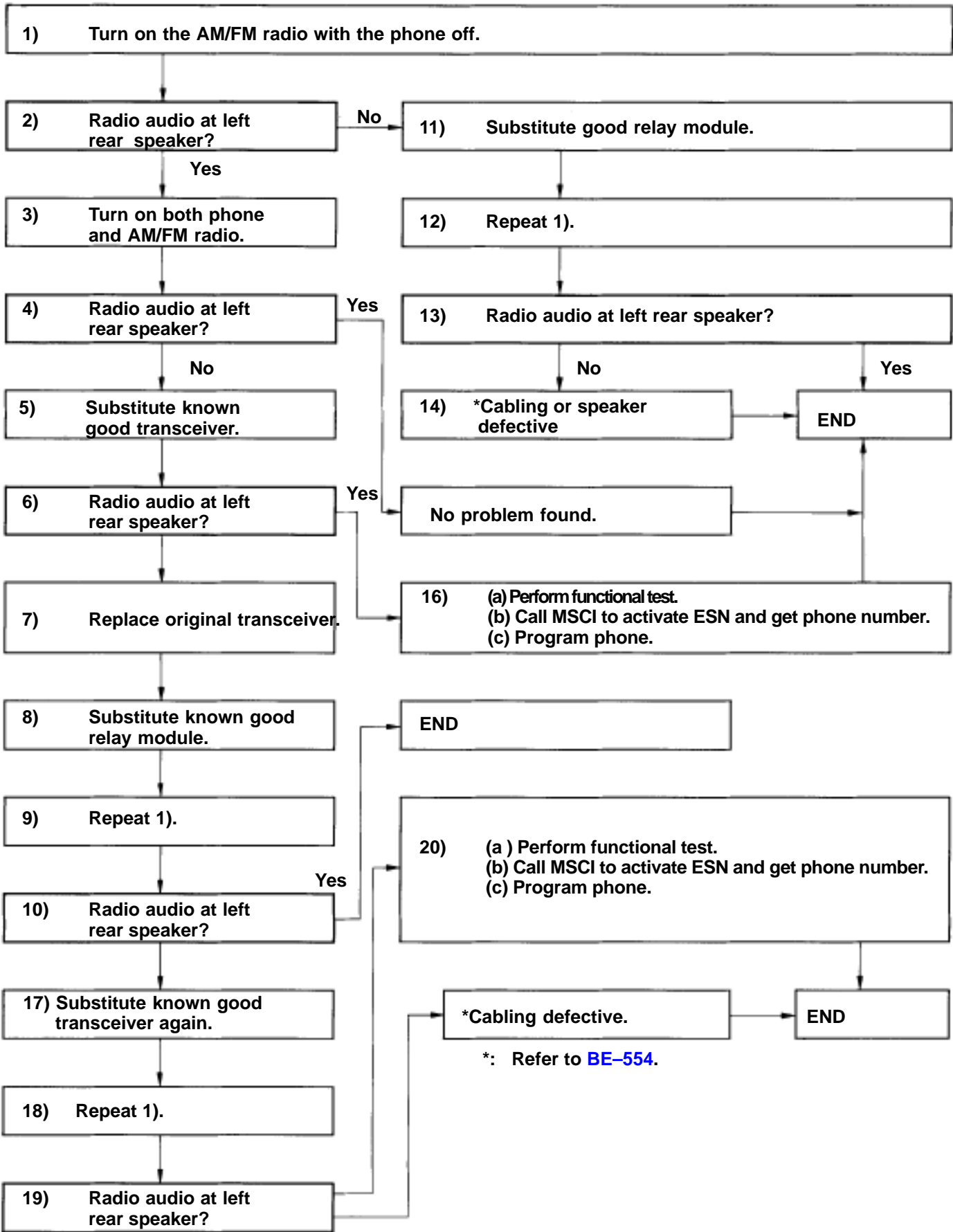


CONTINUED ON NEXT PAGE

CONTINUED FROM PREVIOUS PAGE

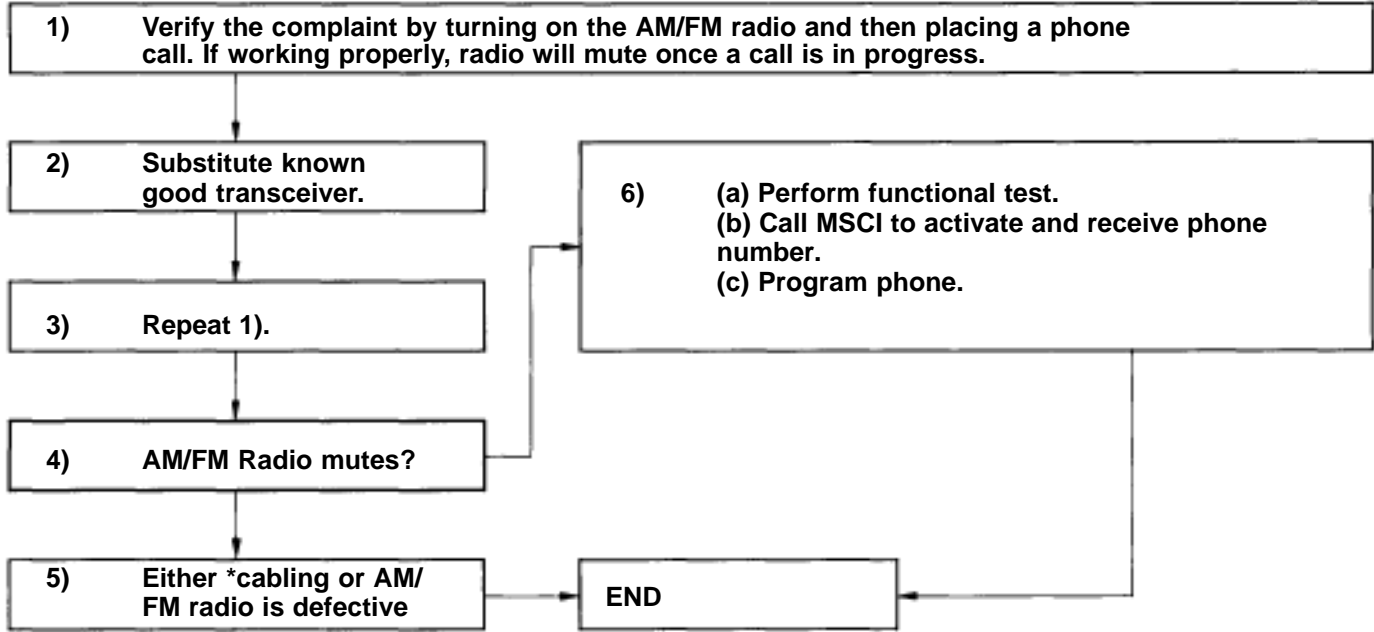


**8 NO HANDS FREE AUDIO OR TONES FROM LEFT REAR SPEAKER**



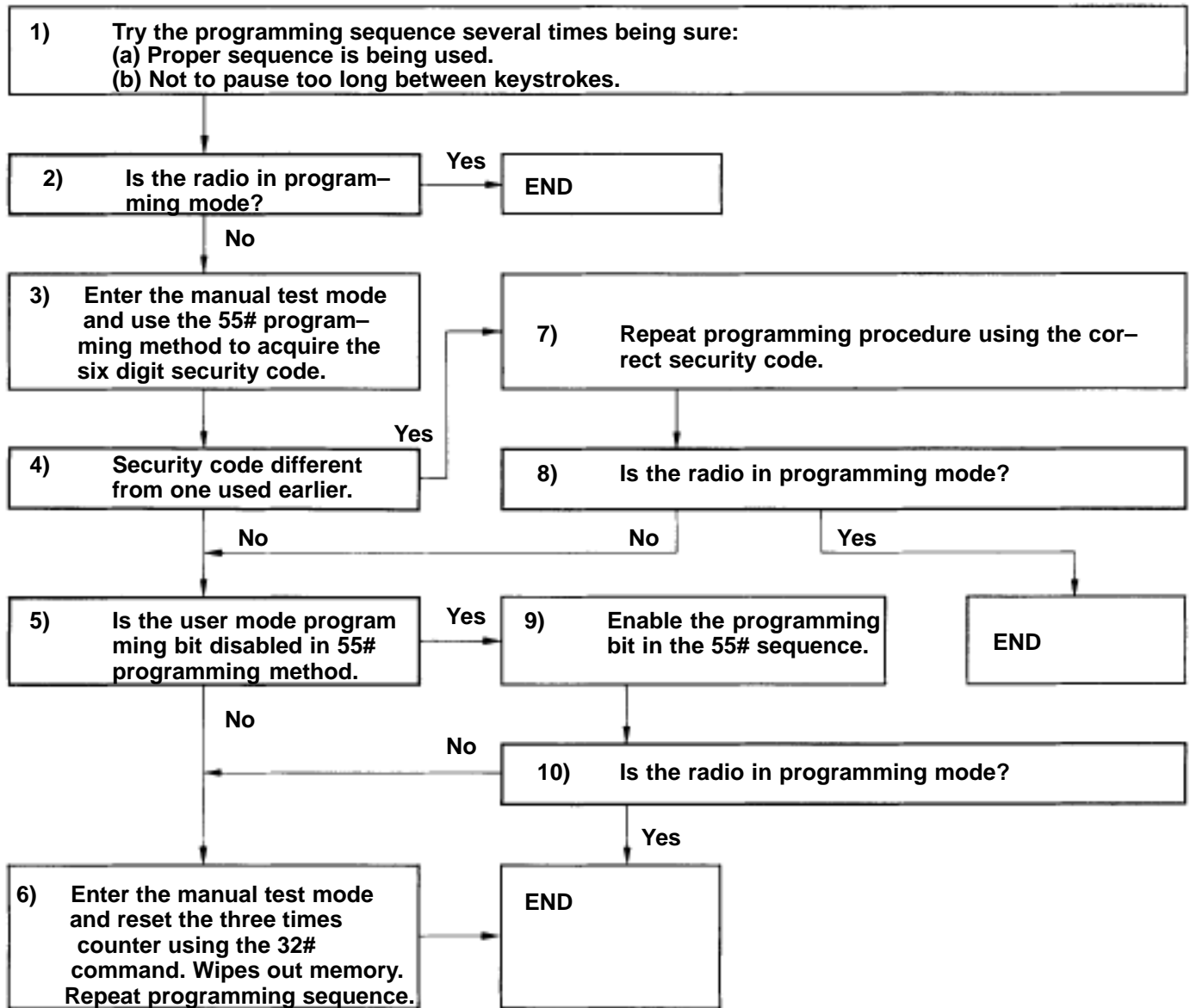
\*: Refer to BE-554.

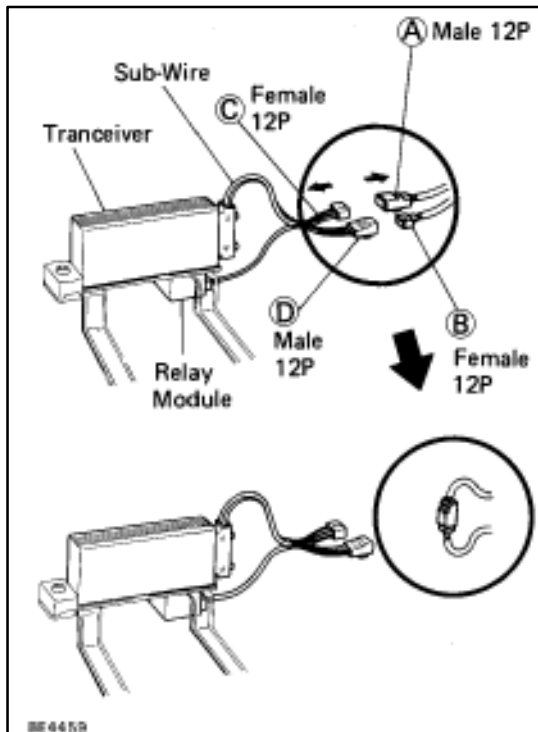
**9 AM/FM RADIO DOES NOT MUTE DURING CALLS**



\*: Refer to [BE-554](#).

<b>10</b>	<b>RADIO WILL NOT GO INTO PROGRAMMING MODE</b>
-----------	--





## DIAGNOSIS PROCEDURE FOR CABLING

### DIAGNOSIS PROCEDURE

#### (Step 1)

Disconnect connectors (A) and (C), (B) and (D), then connect (A) and (B).

This method returns the audio connection to the original condition before connection of the receiver and relay module, so that it can be judged whether the rear speaker and vehicle wire are normal or not.

#### (Step 2)

If the result in step 1 is normal, replace the sub-wire.