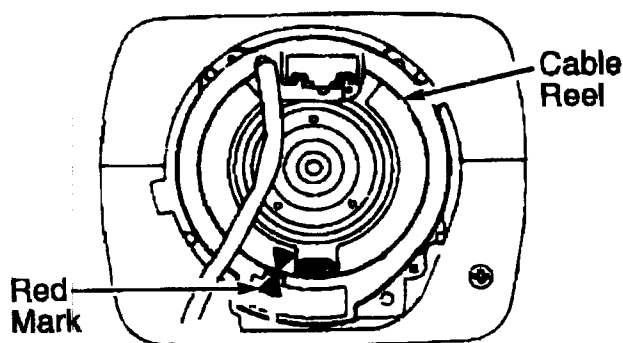


marks are still aligned.



92G24384

Fig. 1: Aligning Marks On Cable Reel
Courtesy of Toyota Motor Sales, U.S.A., Inc.

REMOVAL & INSTALLATION

STEERING WHEEL & HORN PAD

Removal

1) Disconnect negative battery cable terminal. Place front wheels in straight-ahead position. Using a T30 Torx wrench, loosen retaining screws until groove along screw circumference engages screw case. See Fig. 2. Pull wheel pad out from steering wheel. Unplug air bag connector. See Fig. 3.

CAUTION: When removing wheel pad, take care not to pull air bag wiring harness. When storing wheel pad, keep upper surface of pad facing upward.

2) Mark steering wheel and steering shaft for reassembly reference. Remove steering wheel retaining nut. Using Steering Wheel Puller (09950-50010), remove steering wheel.

Installation

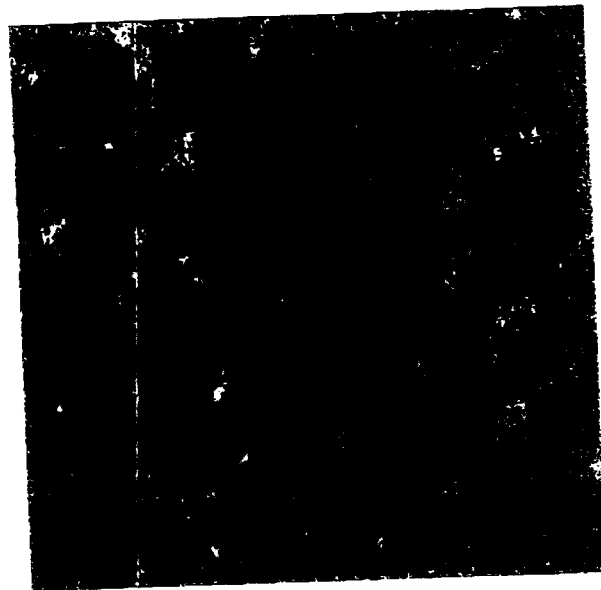
1) Ensure front wheels are pointing straight ahead. Center cable reel. See CABLE REEL under ADJUSTMENTS. Align reference marks. Install steering wheel. Tighten steering wheel retaining nut to 26 ft. lbs. (35 N.m). Connect air bag wiring.

2) Install steering wheel pad after ensuring circumference groove of Torx screws engages screw case. Tighten screws to 78 INCH lbs. (8.8 N.m) for ES300, GS300 and GS400. 63 INCH lbs. (7.1 N.m) for ES300 and 80 INCH lbs. (9 N.m) for SC300 and SC400.

NOTE: If steering wheel shows signs of cracks, deformation, or replace steering wheel pad, ensure wheel pad is aligned with other components.

• WHEN RECONNECTING (-) BATTERY TERMINAL, KEEP BRAKE PEDAL DEPRESSED. OTHERWISE VSC MESSAGE WILL DISPLAY.

or there is evidence of connector, steering wheel or interferes



FIG'S 1 & 2
ON NEXT PAGE

YOU CAN RENT THE STEERING WHEEL PULLER FROM YOUR LOCAL AUTO PARTS STORE FOR FREE. DON'T WORRY ABOUT THE PULLER #

IT LOOKS LIKE:

