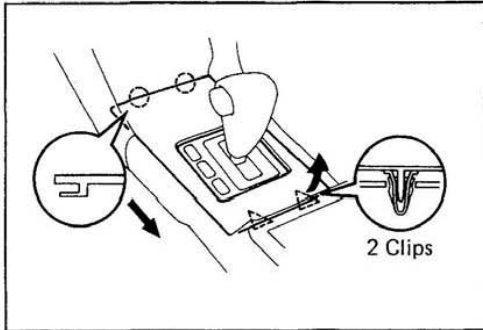
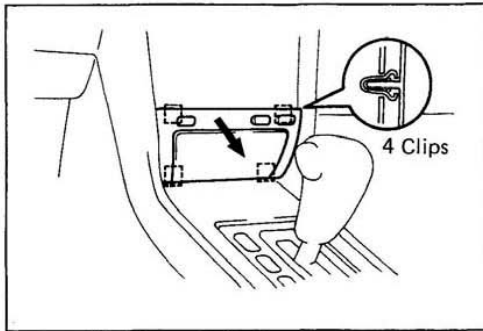


The following instructions are for the removal of the A/C Climate Control Unit on 1990 through 1994 Lexus LS400 model vehicles



1. REMOVE UPPER CONSOLE PANEL

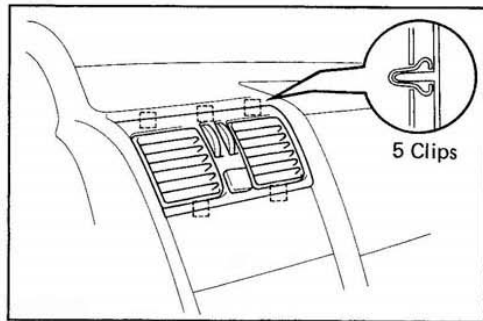
- (a) Pry out the rear side of the panel.
- (b) Pull the panel backwards to remove it.



2. REMOVE FRONT ASH RECEPTACLE

NOTICE: Perform this operation only with the ash receptacle fully closed.

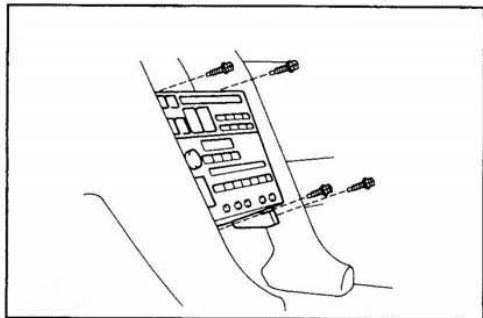
- (a) Pull the front ash receptacle.
- (b) Disconnect the connector.



3. REMOVE NO.2 REGISTER

Using a screwdriver, remove the register.

HINT: Tape the screwdriver tip before use.

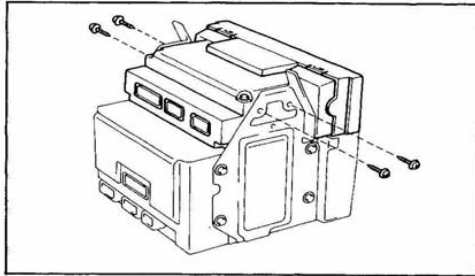


4. REMOVE RADIO WITH A/C CONTROL ASSEMBLY

Remove four screws and radio with the A/C control assembly.

A/C Climate Control Removal Instructions

The following instructions are for the removal of the A/C Climate Control Unit
on 1990 through 1994 Lexus LS400 model vehicles



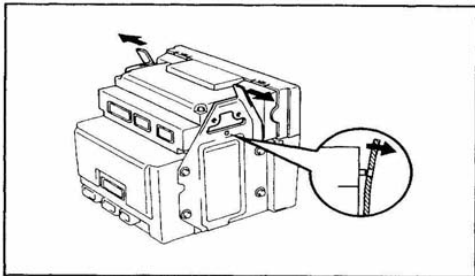
A/C CONTROL ASSEMBLY

Removal of A/C Control Assembly

5. REMOVE RADIO AND A/C CONTROL ASSEMBLY

6. REMOVE AIR CONDITIONER CONTROL ASSEMBLY FROM RADIO
 - (a) Remove the four screws.

 - (b) Open the brackets on the outside, release the connection of the claws and remove the air conditioner control assembly.



Notes:

1. On step 1, don't pull the rear part of the console cover up more than an inch or so because you can break off the clips that hold the front of the console cover. Then slip the console cover back about an inch to disengage the front clips. It helps to put the car in neutral in order to remove the console cover over the shifter.

IMPORTANT: ENGAGE THE EMERGENCY BRAKE BEFORE SHIFTING GEAR.

2. On step 3, the air registers just pries right out, go straight back, not at an angle.
3. Careful on step 4 not to drop the screws, they are hard to fish back out. If you do anyway, use a magnet to retrieve them.
4. The diagram doesn't show it, but when you pull the Radio and AC Control assembly out as far as you can, you then have to unplug all the plugs on the back of the two units in order to fully remove them from the car. All the plugs have a locking mechanism on them. You must push on the locking tabs quite hard in order to disengage the locking mechanism and unplug the plugs.

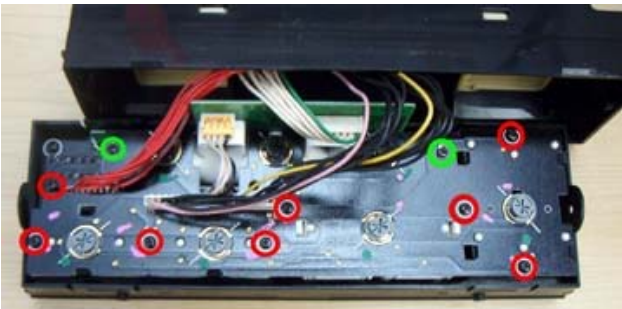
Time/Temp Climate Control LCD Remove and Replace Instruction.



1. After the LCD climate unit is separated, there are two side screws that need to be removed.



2. Rotate a thin flat head screwdriver under this tab while pulling on the face of the unit. You need to keep pulling on the face while you switch to do the other tab, otherwise the tab will pop back on. Once you get tabs off gently pull the face of the unit out so both top and bottom tabs have been released.



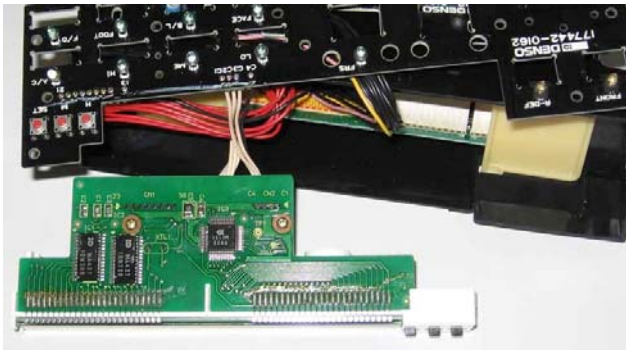
3. Remove the 8 long screws (red circle) and 2 short screws (green circle). Carefully separate this board from the rest of the face. Try to put this board out of the way, see next image



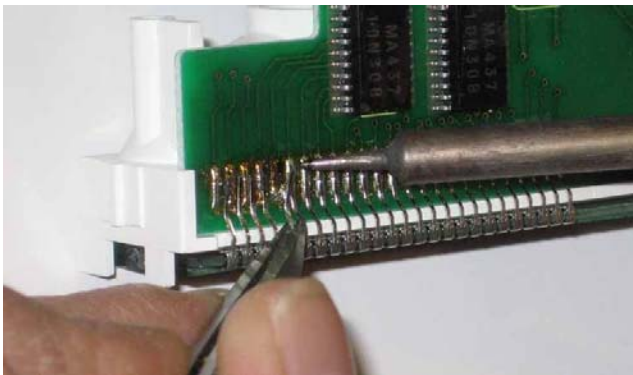
4. Remove the screws circled in yellow. Carefully put this board out of the way.



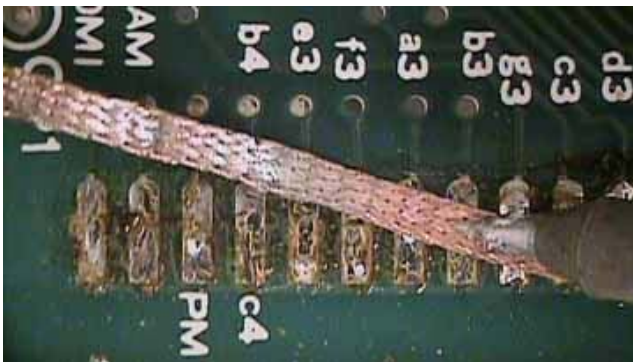
5. The LCD screen has glue on parts of it so you need to be really careful here. Use a heat gun to warm up the face, ultimately warming up the glue behind the LCD lens cover. Just warm it up, don't melt it! Now start to pry the LCD away from the lens.



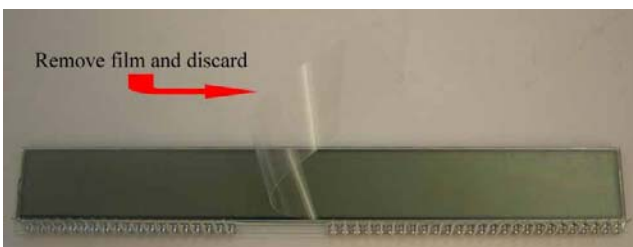
6. Set aside the face. Then carefully turn the PCB-LCD module so that solder side of the LCD is up and accessible to be removed with the soldering iron.



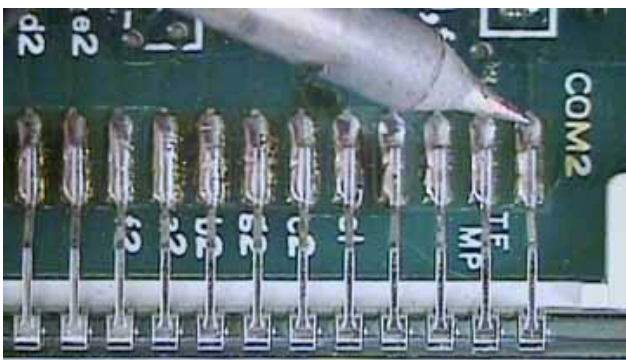
7. Using the heated solder and start removing every single pin.



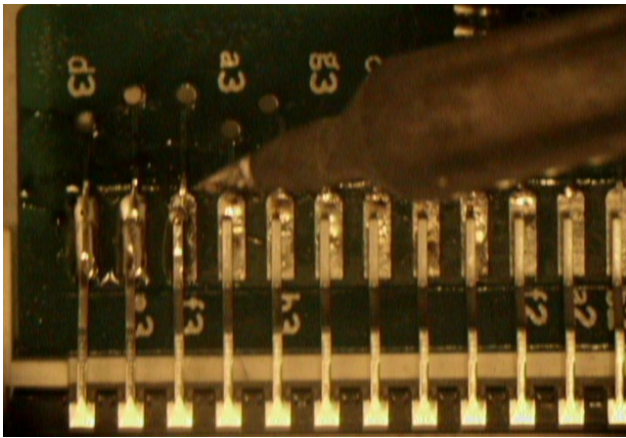
8. Cleaning up the old solder using Solder-Wick de-soldering braid.



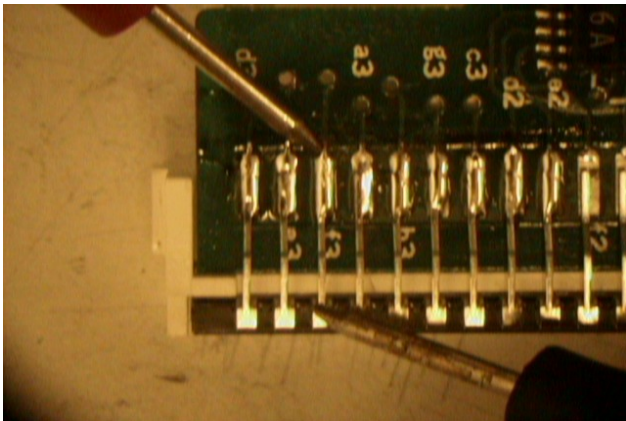
9. Remove the inner protective plastic film before place the LCD inside its plastic housing.



10. Align the LCD so all the pins are properly line up with the PCB's pin pad. Begin solder the new LCD until all pins are solder in.



11. A closer look at the new LCD being solder.



12. After all the pins are soldered, volt meter to test the conductivity of the soldering.



13. Remove the outer protective plastic film of the LCD.

14. Insert PCB-LCD back into front plastic and secure with screws.

15. Replace 7 light bulbs (See Appendix A for instructions)

16. Put back the unit back together completely.

17. At this point you should bring the unit to your car and test everything. Turn the key and see if everything lights up. Turn on your lights to check the backlighting. Adjust the temp up and down to make sure all the numbers work. The time should read 1:00AM. You don't want to put everything back only to find one of your solder points is bad. If something is not working you need to check your solder points.

Precautions

- Don't heat up the pads any longer than is necessary. If you heat them up too long they will come loose from the circuit board.
- Don't move the pin as the solder is "freezing," that is what's known as a cold solder joint
- The new LCD's are made of glass and are fragile. Don't drop, bump, or bend them, they will break!
- Don't heat the pins on the LCD's for very long; they can loose their firm grip on the glass LCD.

APPENDIX A

The following instructions illustrate how to change Lexus LS400 Climate Control LCD backlighting bulbs.



1. Remove bulb from climate control unit



2. Remove color filter boot



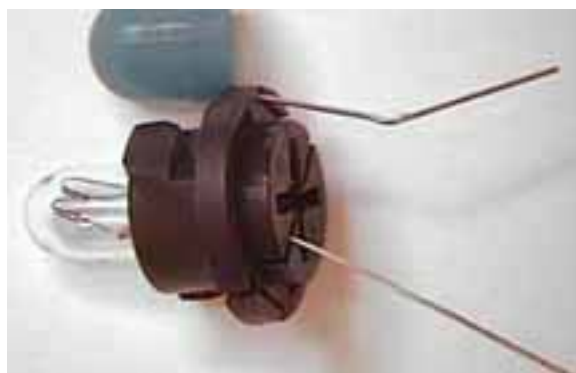
3. Un-loop wire from plastic base



4. Remove light bulb from plastic base



5. Insert new light bulb into plastic base



6. Loop wire into plastic base



7. Cut wire short but leave about 1/16 of wire from base.



8. Push wire into base groove

9. Insert color filter boot back into bulb

10. Bulb is now ready for use.