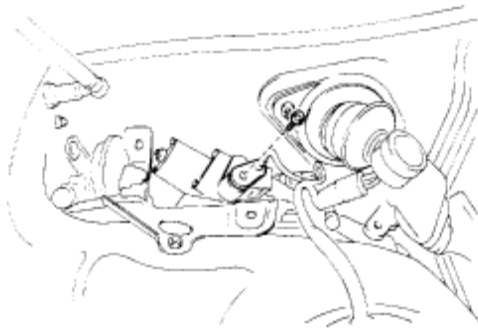


1991 Lexus LS 400 V8-4.0L (1UZ-FE)

Service and Repair

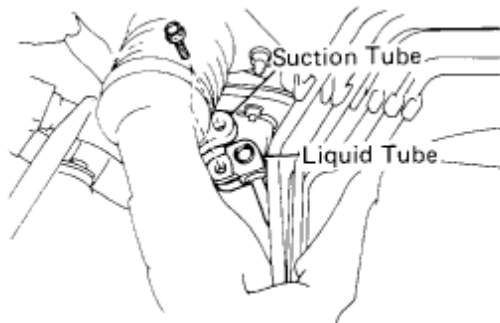
Removal of Cooling Unit

1. DISCONNECT NEGATIVE(-) CABLE FROM BATTERY
2. RECOVER **REFRIGERANT** IN REFRIGERATION SYSTEM
3. REMOVE CRUISE CONTROL ACTUATOR



□ □

4. REMOVE EQUALIZER TUBE FROM EPR Remove the one bolt and remove both tubes.



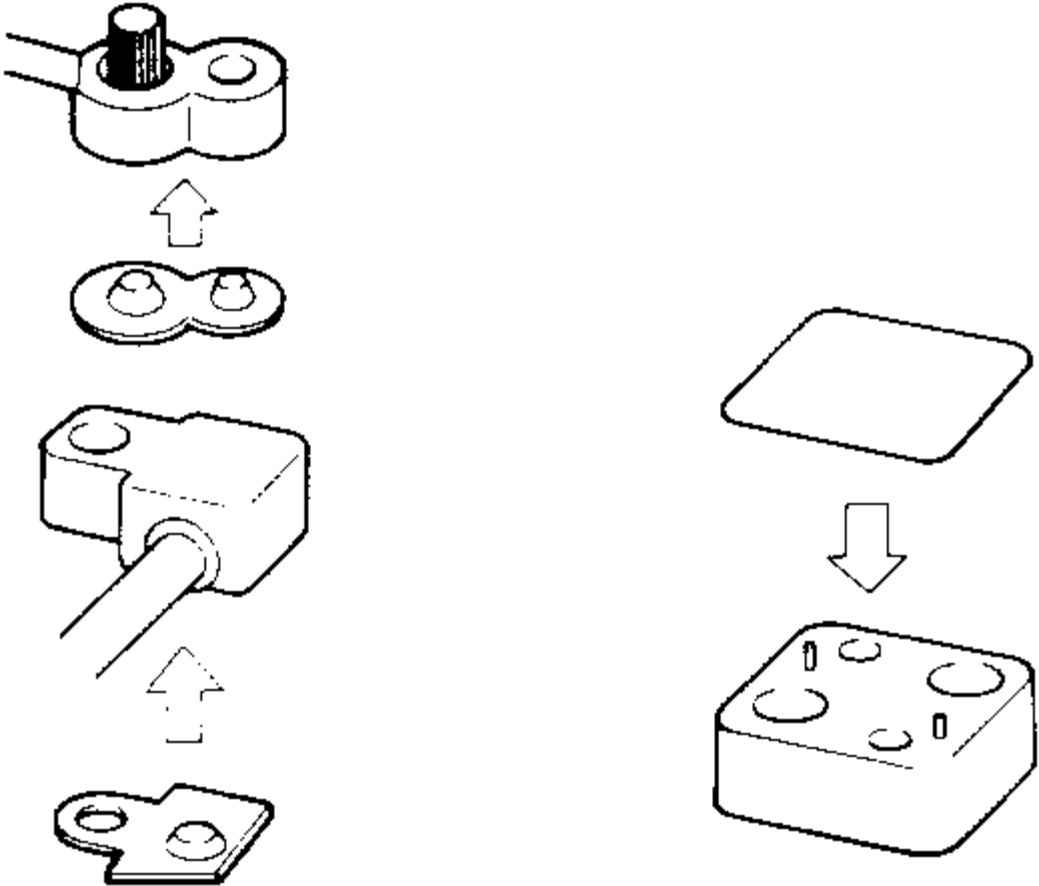
□ □

5. REMOVE LIQUID TUBE AND SUCTION TUBE Remove the two bolts and remove both tubes.



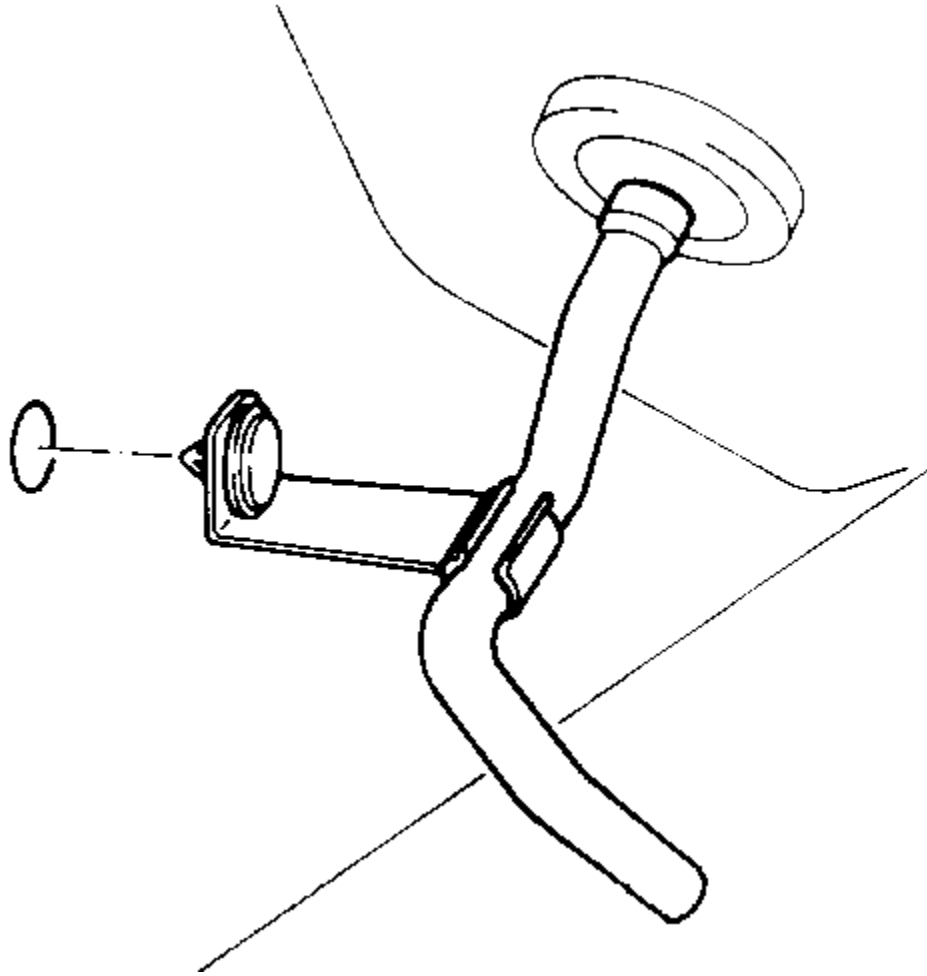
□ □

6. REMOVE COVER PLATE Remove the two nuts and the cover plate.



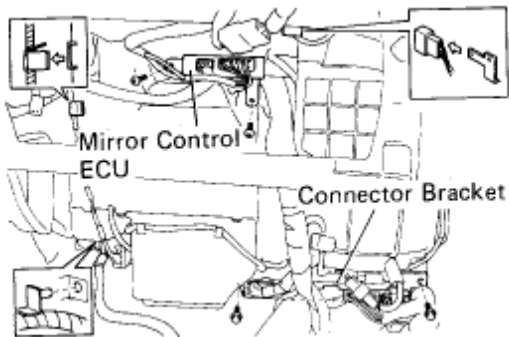
□ □

NOTICE: Cap the open fittings immediately to keep moisture out of the system.



□ □

7. REMOVE DRAIN HOSE CLAMP FROM FRONT SIDE MEMBER
8. REMOVE HEATER TO REGISTER NO.4 AND NO.5 DUCTS



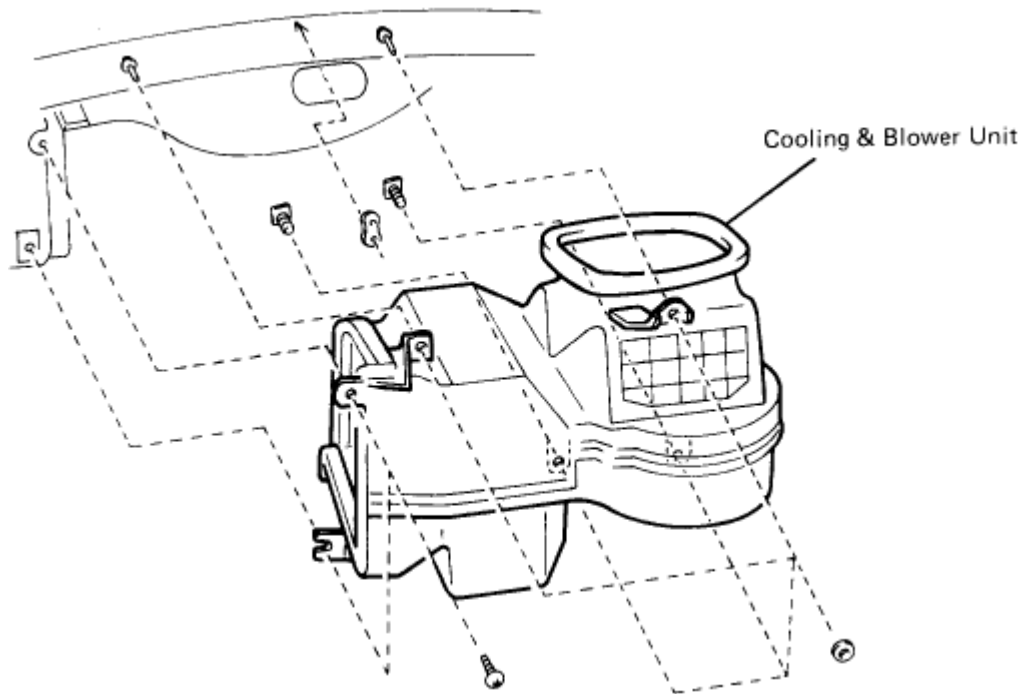
□ □

9. REMOVE MIRROR CONTROL ECU
10. REMOVE CONNECTOR BRACKET

(a) Remove the two bolts and the bracket from the cooling and blower unit.

(b) Disconnect connectors.

11. DISCONNECT VEHICLE SIDE WIRE HARNESS FROM COOLING AND BLOWER UNIT



□ □

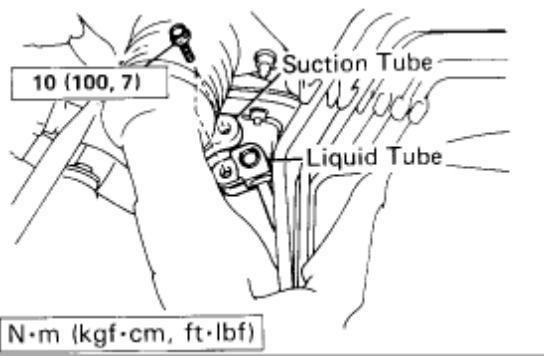
12. REMOVE COOLING AND BLOWER UNIT Remove the four nuts and two screws, then remove the cooling and blower unit.

Installation of Cooling Unit

Assemble following the disassembly procedure in reverse order

HINT:

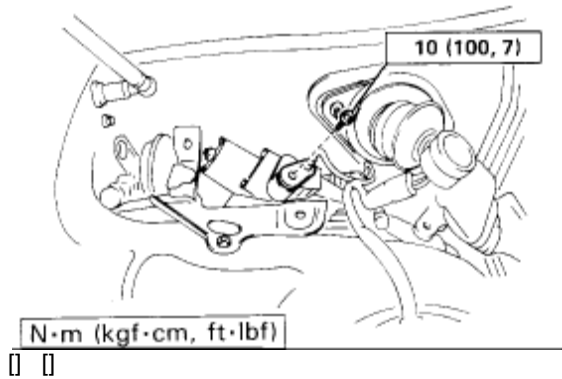
- The tightening torque specified for the bolts used to install the liquid tube and suction tube to the cooling and blower unit is shown below.



□ □

Specified torque: 10 N.m (100 kgf.cm, 7 ft.lbf)

- The tightening torque specified for the bolt used to install the equalizer tube to EPR is shown below.



Specified torque: 10 N.m (100 kgf.cm, 7 ft.lbf)

- If the evaporator was replaced, add compressor oil to the compressor.

Add 40 - 50 cc (1 .4 - 1.7 fl.oz.)

- After installation, evacuate the refrigeration system and charge it with refrigerant.

Specified amount: 1,050 g (2.3 lb)

- After the operation is finished, be sure to check for leakage of refrigerant and check the operation of the A/C.