

Replacing rear struts on a 1991 LS400

Raise rear of car and place securely on stands
Remove rear wheels

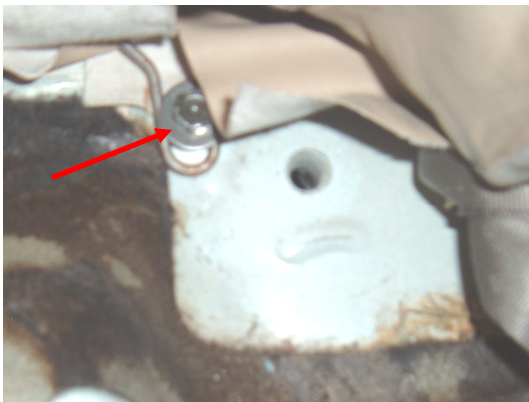
Inside of Car

Remove rear seat cushion. Pull up on the two tabs located at the bottom front of the seat cushion

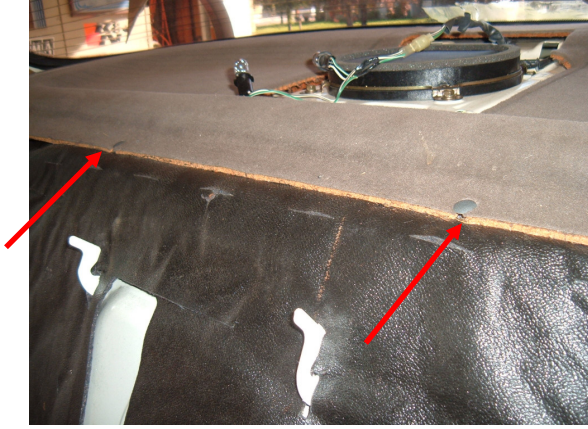


Remove rear seat back.

1. Remove both center seat belt buckles
2. Remove all four retaining bolts (hidden under flap of upholstery.)
3. Lift up then pull forward. Seat back will now be free of mounting tabs.



Move black liner/sound deadener away from upper strut mount area. It may be necessary to remove the two plastic retainers that secure the package tray in place.



By gently lifting up on the package tray there will be enough room to access the upper mount.

1. Remove the three nuts holding the cover in place and then remove the cover.
2. Remove the three nuts holding the upper strut mount in place. The strut assembly will drop only an inch or two.