


Wind Noise from Front Side Glass

Service Category Vehicle Exterior

Section Window/Glass

Market USA

Lexus Supports
ASE Certification 

Applicability

YEAR(S)	MODEL(S)	ADDITIONAL INFORMATION
2010	RX350	

TSIB REVISION NOTICE

February 9, 2010 Rev1:

- Production Change Information has been updated.

Any previous printed versions of this service bulletin should be discarded.

Introduction

Some 2010 RX 350 vehicles may exhibit a wind turbulence noise condition noticeable from the front side window area. This condition is most notable at highway speeds. New acoustic glass is available to improve this condition.

NOTE

This TSIB addresses unusual interior noise that may be present in some vehicles, by carefully following the instructions in this TSIB, noise levels may be improved. Customers should be made aware that some level of wind turbulence noise, especially in cross wind conditions, is present in all vehicles. A vehicle, such as the RX 350, which is one of the quietest vehicles in its segment today, may tend to draw attention to normal wind turbulence or rushing sounds because of the relative absence of other ambient noises.

Production Change Information

PLANT	PRODUCTION LINE	DRIVETRAIN	PRODUCTION CHANGE EFFECTIVE VIN
TMK	1 (12th digit = 0)	2WD	JTJZK1BA#A2000347
		4WD	JTJBK1BA#A2000718
	2 (12th digit = 4)	2WD	JTJZK1BA#A2405328
		4WD	JTJBK1BA#A2412058
TMMC	-	2WD	2T2ZK1BA#AC006960
	-	4WD	2T2BK1BA#AC015087

Wind Noise from Front Side Glass

Parts Information

PLANT	PREVIOUS PART NUMBER	CURRENT PART NUMBER	PART NAME	QTY
TMK	68101-48100	68101-48111	Glass Sub-Assy, FR Door, RH	1
	68102-48100	68102-48111	Glass Sub-Assy, FR Door, LH	1
TMMC	68101-0E020	68101-0E050	Glass Sub-Assy, FR Door, RH	1
	68102-0E020	68102-0E050	Glass Sub-Assy, FR Door, LH	1

For Vehicles with Glass Breakage Sensor

PLANT	PREVIOUS PART NUMBER	CURRENT PART NUMBER	PART NAME	QTY
All	PT398-60084	NA	Label, GBSWDW LBL English	2

For Vehicles with Remote Engine Start

PLANT	PREVIOUS PART NUMBER	CURRENT PART NUMBER	PART NAME	QTY
All	PT398-60088	NA	Label, RESWDW LBL ENG	2

Warranty Information

OP CODE	DESCRIPTION	TIME	OFF	T1	T2
BD9079	R & R Front Door Glass (both sides)	0.8	6810#-48100 6810#-0E020	59	57
Combo A	Glass Breakage Sensor Relocation and Sensitivity Adjustment (PPO/DIO Installed)	0.3			
	Glass Breakage System Sensitivity Adjustment (Factory Installed)				

APPLICABLE WARRANTY

- This repair is covered under the Lexus Comprehensive Warranty. This warranty is in effect for 48 months or 50,000 miles, whichever occurs first, from the vehicle's in-service date.
- Warranty application is limited to occurrence of the specified condition described in this bulletin.

Wind Noise from Front Side Glass

Required Tools & Equipment

SPECIAL SERVICE TOOLS (SST'S)	PART NUMBER	QTY
Plastic Pry Tool Set*	00002-06000-01	1

* Essential SST.

NOTE

Additional SSTs may be ordered by calling 1-800-933-8335.

Repair Procedure

Use the same procedure for the left and right sides of the vehicle as needed.

1. Confirm front side windows are the source of wind turbulence noise.
 - A. If noise is verified, proceed to step 2 – Remove the side window glass.
 - B. If noise is NOT confirmed from the side window, STOP. The source of the noise may be coming from a different location. This TSIB does NOT apply. Diagnose the source of the wind turbulence noise and repair as needed.
2. Remove the side window glass.

For side window glass removal instructions, refer to the Technical Information System (TIS), applicable model and model year Repair Manual:

- 2010 model year RX 350 (To 08/2009):
Vehicle Exterior – Door/Hatch – “Front Door: [Disassembly](#)”
- 2010 model year RX 350 (From 08/2009):
Vehicle Exterior – Door/Hatch – “Front Door: [Disassembly](#)”

3. Replace the front side window glass.

For side window glass installation instructions, refer to the Technical Information System (TIS), applicable model and model year Repair Manual:

- 2010 model year RX 350 (To 08/2009)
Vehicle Exterior – Door/Hatch – “Front Door: [Reassembly](#)”
- 2010 model year RX 350 (From 08/2009)
Vehicle Exterior – Door/Hatch – “Front Door: [Reassembly](#)”

Wind Noise from Front Side Glass

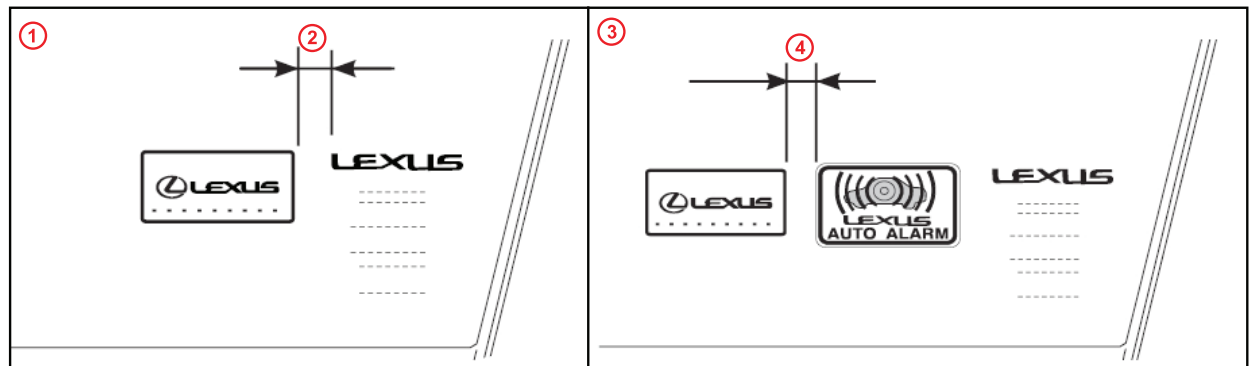
Repair Procedure (Continued)

4. Install window labels in correct position.
 - A. Use household glass cleaner to clean the inside of the front door windows.
 - B. Use a piece of clear tape to lift the label from the protective backing.
 - C. Attach the label as shown in Figure 1.
 - D. Repeat steps A–C with the other window

NOTICE
Do not touch the adhesive surface of the label(s).

NOTE
Compare original glass to new glass to make sure labels match.

Figure 1.



1	How to Align to the Etching
2	10 mm

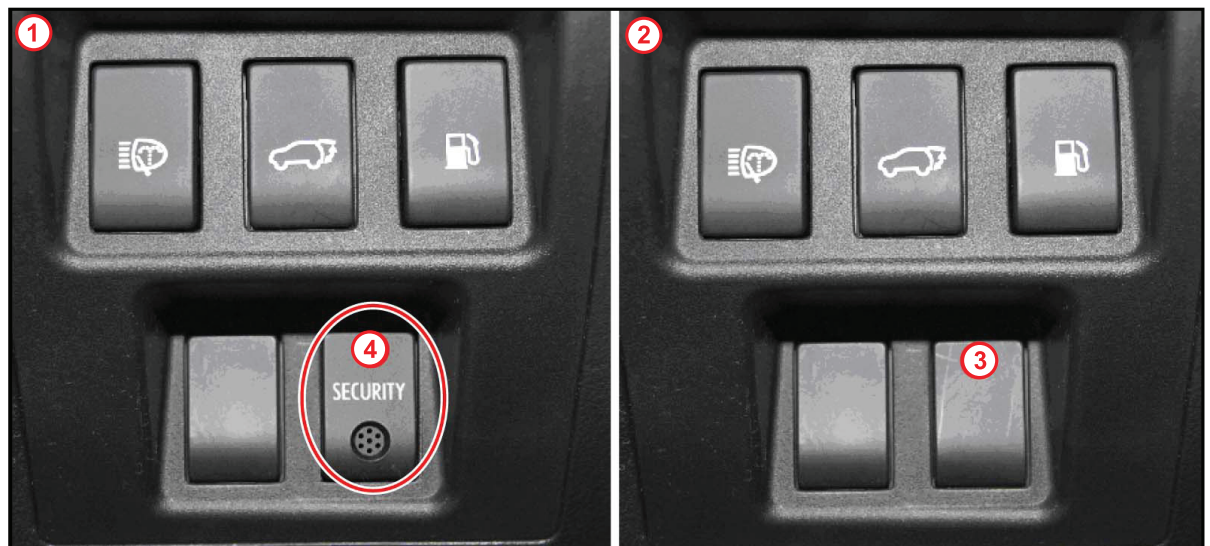
3	How to Align to Other Labels
4	1–5 mm

Wind Noise from Front Side Glass

Repair Procedure (Continued)

5. Glass Breakage Sensor Calibration, if applicable.
 - A. For vehicles equipped with a Glass Breakage Sensor, the sensor position and/or system sensitivity will need to be calibrated for the new glass.
 - B. Determine if the Glass Breakage Sensor was installed at the Factory or as a Post Production Option (PPO)/ Dealer Installed Option (DIO).

Figure 2.



1	Factory Installed
2	PPO / DIO Installed

3	No "Security" Tab
4	Security Tab

- C. If Factory Installed, follow the PPO/DIO Glass Breakage Sensor Accessory Installation Procedure in TIS to adjust GBS system sensitivity for acoustic glass.

Wind Noise from Front Side Glass

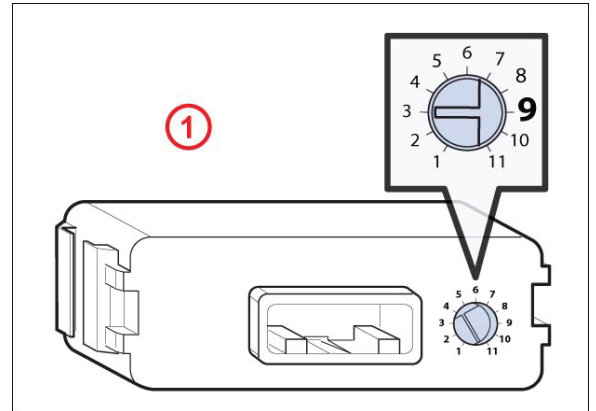
Repair Procedure (Continued)

- D. If PPO/DIO, follow the PPO/DIO Glass Breakage Sensor Accessory Installation Procedure in TIS to adjust GBS system sensitivity and relocate the GBS microphone for acoustic glass.

NOTE

System Sensitivity should be set to 9.

Figure 3.



1 Vehicles with Acoustic Windows Only

- 6. Confirm that noise has been reduced.