

## Instrument Panel (Dashboard) and Door Panels Sticky/Cracked

### Repair Procedure

1. Confirm the condition exists.

Does the dashboard and/or door panel(s) exhibit a sticky and/or cracked appearance?  
(See Figures 1 – 3 for examples of these conditions.)

- **YES** — Continue to step 2.
- **NO** — This bulletin does NOT apply. Continue diagnosis using the applicable Repair Manual.

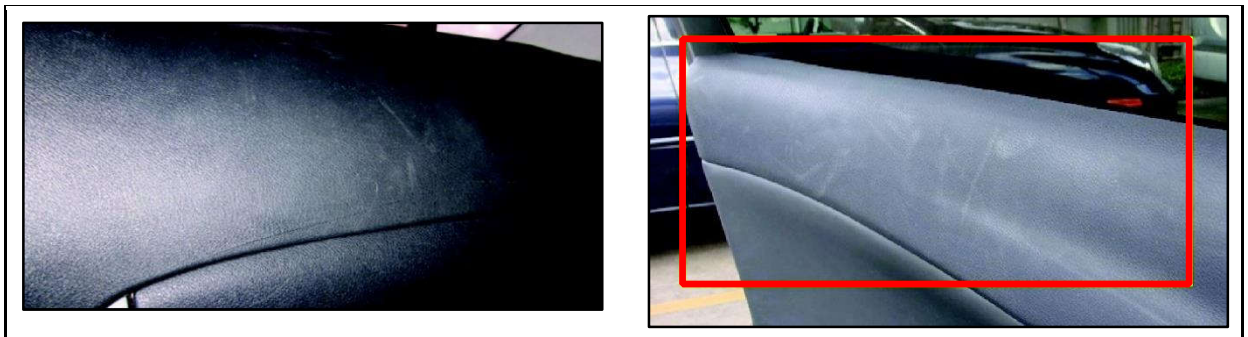
#### NOTE

- When a vehicle with a sticky interior panel(s) is parked out of heat and humidity for more than a few hours, the panel surface may become chalky. Once the vehicle is exposed to heat again, the sticky condition may return.
- Interior panels can become sticky over time for a variety of reasons and circumstances. Most vehicles subject to repair under this Service Bulletin have more than likely been operated for extended periods in areas of high temperatures and high humidity.
- In some cases, the interior panels may appear shiny due to aftermarket interior dressing.

**Figure 1. Example of Sticky Condition**



**Figure 2. Example of Chalky Condition (Becomes Sticky in Heat)**



## Instrument Panel (Dashboard) and Door Panels Sticky/Cracked

---

Repair Procedure (continued)

Figure 3. Example of Cracked Condition

