



## Seats (Manual)

### Adjusting seat position



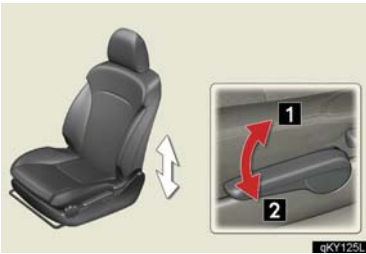
With the lever raised, slide the seat forward or backward.

### Adjusting seatback angle



With the lever raised, tilt the seatback forward or backward.

### Adjusting seat height



- 1 Raises the seat
- 2 Lowers the seat

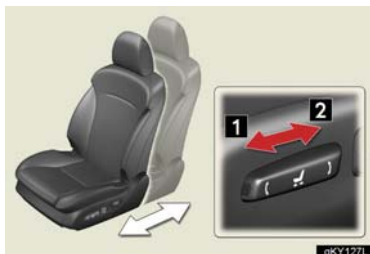
### Adjusting the front of the seat cushion



- 1 Raises the front of the seat cushion
- 2 Lowers the front of the seat cushion

## Seats (Power)

### ■ Adjusting seat position



- 1 Moves the seat forward
- 2 Moves the seat backward

### ■ Adjusting seatback angle



- 1 Tilts the seatback forward
- 2 Reclines the seatback

### ■ Adjusting the seat cushion



- 1 Raises and lowers the front of the cushion
- 2 Raises and lowers the entire seat

### ■ Adjusting the lumbar support



- 1 Firmer
- 2 Softer

## Driving and Seat Position Memory System (If Equipped)

The seats can be returned to a previously set position by simply pressing a button. The position of the steering wheel and the outside rear view mirrors is adjusted along with the driver's seat. Positions can be conveniently recorded for the vehicle's primary drivers and passengers.

### Setting memory positions



While holding down the SET button, press and hold one of the memory buttons (1, 2, or 3) until you hear a beep.

The current position of the seat, as well as the position of the steering wheel and the outside rear view mirrors (for the driver's seat only) is recorded.



### Recalling memory positions



Press one of the memory buttons (1, 2, or 3).

### Linking driving position memory with door unlock operation (driver's seat only)

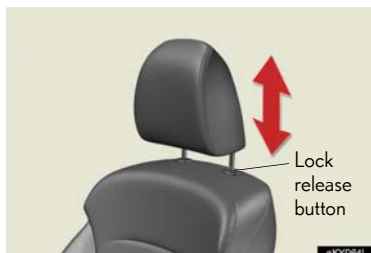


While holding down the desired memory button, press and hold either the  or  button on the wireless remote control until you hear a beep.

Linking driving position memory to the door unlock operation allows the memory position to be recalled automatically when the driver's door is opened. (The linked function does not operate if the driver's door is unlocked using the mechanical key or manually from inside the vehicle.)

## Head Restraints

### Height adjustment



**To raise:** pull the head restraint upward.

**To lower:** push the head restraint down while pressing the lock release button.

## Seatbelts

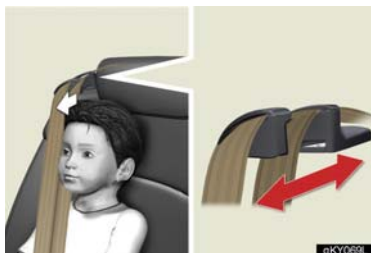
### Adjusting shoulder belt height (front seats only)



**To raise:** pull the anchor upward.

**To lower:** depress the button and push the anchor down.

### Seatbelt comfort guides (outside rear seats only)



If the shoulder belt sits close to the neck, slide the comfort guide forward.

## Outside Rear View Mirrors



1 To select the mirror you wish to adjust (L or R), use the master switch.

2 To adjust mirror angle, use the control switch.

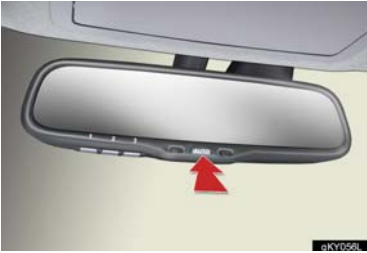
On some models, the mirrors will automatically angle downwards when the vehicle is reversing.

To disable this function, set the select switch in the neutral position (between L and R).



## Anti-glare Inside Rear View Mirror

The anti-glare mirror uses a sensor to detect light from vehicles behind and automatically reduces glare.



To turn AUTO mode ON/OFF, press the AUTO button.

The indicator comes on when AUTO mode is turned ON.

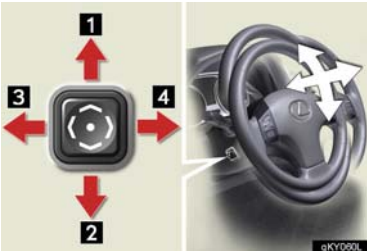
## Steering Wheel

### Manually adjustable type



To adjust the steering wheel, press the lever down and move the steering wheel to the desired position. Lock the steering wheel in place by pulling the lever up.

### Power-adjustable type



- 1 Up
- 2 Down
- 3 Away from the driver
- 4 Toward the driver

The power-adjustable type steering wheel retracts automatically when the engine switch is turned OFF to allow for easy exit and entry. The steering wheel returns automatically to its previously set position when the engine switch is switched to ACC or IG-ON mode.