

November 2019



TANK WAIT LIST

TLGX460A-US Auxiliary Tank 33 gallons

Thank you for your interest in our products and the new tank kit for Toyota 4Runner and Lexus GX 460. We have had many enquiries and requests for this kit and we are happy to begin the process of installing our prototype tanks and developing the fitment kit and instructions for release in the first quarter of 2020.

We are not selling the kits yet, but in response to many requests, have established a wait list and reservation system to make it possible for our dealers and customers to “get in line” on a first come, first served basis. Here are the details.

1. The first two GX460/5G 4Runner prototype tanks will depart Melbourne by air early in early November.
2. These kits will be installed in a GX and a 4Runner in November.
3. Based upon successful instructions, along with kit and instruction completion, we will place a production order on January 6 for arrival by air in February.
4. We are now adding names to our no-deposit wait list. **There is not payment due or liability to joint the list.**
5. Once we have completed prototype installation, testing, kit and instruction development, we will convert the “wait list” to a “reservation list.” We expect to do this some time in early December.
6. The kit price is \$1,895 (plus shipping from Stockton, CA).
7. **If you wish to move to the reservation list, we will prepare an invoice for the tank purchase with a \$300 refundable deposit due on receipt.**
8. On January 31, the balance of \$1,595 will be due and payable. **At this point, deposits may be refunded and the order cancelled.**
9. Tanks will arrive in Stockton and be reshipped to buyers by earl March, with freight charges billed and due on departure.
10. **If tanks are not shipped by March 15, customers may request and receive a full refund.**

In order to joint the “wait list” please provide the following information by email to ward@longrangeamerica.com:

Customer Name	Shop/Dealer Name
Mailing/Billing Address	Mailing/Billing Address
Street	Street
City	City
State/Province	State/Province
Zip/Postal Code	Zip/Postal Code
Email	Email
Phone	Phone

Please call or email with any questions.

Ward Harris

ward@longrangeamerica.com

1-800-224-7801, extension 101

8am - 5pm Mountain Time M-F

Products at LongRangeAmerica.com

Facebook [@longrangeamerica](https://www.facebook.com/longrangeamerica)



PRODUCT. GUIDE

Lexus GX 460 / 5G 4Runner Auxiliary Fuel Tank 2010 - 2020

Extended range fuel tank to serve expedition, long-distance travel and hauling needs. Buy fuel when the price is right and be prepared for the long haul.

Built by specialists with three decades of experience, serving customers around the world.

Part Number	TLGX460A-US
Type	Auxiliary
Capacity - Gallons	33
Fill Point	Split
Fuel	Petrol
Location	Behind Axle
Relocate Spare	Yes
KDSS?	Yes
Exhaust	Standard



Example tank, not exact match.
Tank shown has supplemental coating.

This auxiliary tank kit from Long Range Automotive of Melbourne, Australia was developed to meet the needs of North American vehicle owners. The goal? To provide additional fuel capacity from a high-quality aluminized steel replacement tank that integrates seamlessly with factory fuel systems and emission controls in North American vehicles.

The tank **may** be installed by a general automotive shop or mechanically competent vehicle owner, given adequate tools, skills and the help of a friend. **That said, we strongly recommend that the tank be installed by a trained professional.**

LR America partner Georg Esterer in the LRA tank tech center in Lilydale, Australia



Long Range Automotive fuel tanks are imported by Long Range America, LLC
LongRangeAmerica.com

1-800-224-7801



A tank and a team you can trust...



...when you need fuel



Product information:

- Works with OEM emission systems
- Complete kit includes all fittings and parts, with instructions
- Uses OEM fuel door and inlet
- Constructed of 2 mm T125C aluminized steel.
- More about aluminized steel https://en.wikipedia.org/wiki/Aluminized_steel
- Tank is covered by a three year limited warranty



Shipping information:

- Tanks ship from Stockton, California by motor freight, wrapped and strapped to a pallet.
- Single tank shipping varies from \$150 to \$350 within Continental US – to commercially zoned business locations with fork lift, or to local freight terminal for pick-up. Added charges may apply for deliveries that do not comply.

Important disclosures:

- This product is designed to suit vehicles as delivered when new. Modifications such as suspension, skid plates, bumpers, hitches and other aftermarket additions may impact or prevent installation.
- This product is NOT FOR SALE TO CALIFORNIA RESIDENTS.
- This product has not been approved, certified, rated or otherwise passed upon by any federal or state regulatory agency.
- We DO NOT HAVE any control over the installation or use of this product and we highly recommend that certified professionals install this product.
- Buyers must rely upon their own skill and judgment in evaluating the installation of this product and are solely responsible for the product's use.

See our tank video on YouTube –
<https://www.youtube.com/watch?v=3dx19C6OxEA>

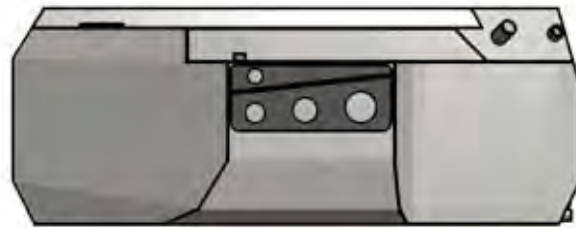




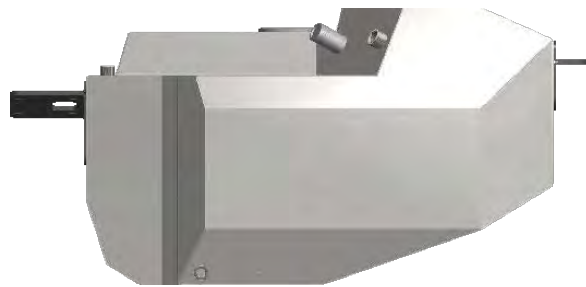
TLGX460A-US Auxiliary Tank
33 gallons



Front View



Left View



Left Front View





TLGX460A-US Auxiliary Tank Preliminary Fitment Kit



BRASS

- 1 x P3 5/16x 1/8 Straight
- 1 x P6 5/16 x 1/4 Elbow
- 1 x P3 x 1/2 x 1/4 Straight
- 1 x P6 1/2 x 1/4 Elbow
- 1 t P14 1/4 Tee

ELECTRICAL

- 1 x LRA-PG210 Switch/Gauge
- 1 x 3mm Two Core x 5m
- 2 x Red Earth Eye
- 1 x Red insulated Terminal
- 3 x Heat Shrink @ 30mm

HOSES

- 1 x 6mm Fuel Hose @ 1,000mm long
- 1 x 8mm Fuel Hose @ 800mm long
- 2 x 12mm Fuel Hose @ 600mm long
- 2 x 25mm Fuel Hose @ 140mm long
- 1 x 25mm Fuel Hose @ 80mm long

HOSE CLAMPS

- 8 x 1/4 Hose Clamp
- 2 x 1/2 Hose Clamp
- 6 x 1 Hose Clamp

BOLTS / NUTS

- 4 x M8 x 25mm Bolt
- 2 x M10 x 90mm Bolt
- 4 x M12 x 30mm Bolt Fine 1.25 pitch
- 4 x M8 x 25mm Flat Washer
- 4 x M8 Spring
- 4 x M10 x 25mm Flat Washer
- 2 x M10 Spring
- 2 x M10 Nyloc Nut
- 2 x M10 Nut
- 4 x M12 Spring Washers
- 4 x M12 x 30 mm Washer
- 5 x M5 x 8mm pan Head (for sender)

MISC PARTS

- 1 x 25mm x 25mm x 22mm Tee Filler
- 1 x 1/4 Weld-on Socket
- 1 x Roll Over Valve
- 1 x LRA-FTG-2
- 1 x Fuel Pump & Filter
- 8 x 7" Cable Ties
- 1 x VDO 220-004 0-90ohm Sender
c/w 300mm Earth Wire Setup and installed in Tank