



INSTALLATION GUIDE

ISNORKELO35

TOYOTA LANDCRUISER PRADO 150 SERIES
Petrol & Diesel



- Ironman 4x4 Snorkel fits to the right hand side of the Toyota Prado.
- It will take about 3 hours to install.
- Below is a list of some required tools for installing your Ironman 4x4 Snorkel:
 - **Hole Saw (108mm)**
 - **Step Drill**
 - **Air Hacksaw**

NOTE: Only use "sensor safe" sealant during installation

IMPORTANT: Snorkel installations should only be done by a qualified person and it is the responsibility of this person to ensure correct fitment and to ensure the installation is water tight.

1. Before installation check snorkel application is compatible with your vehicle.

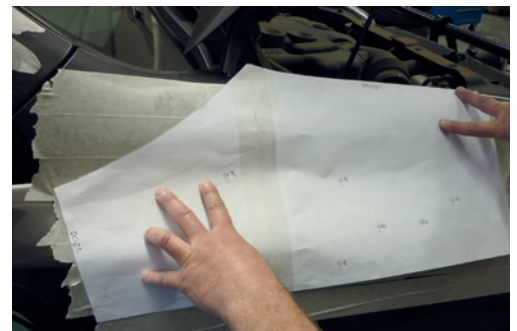
2. Remove right hand front mudguard liner, mud flap and air cleaner assembly.



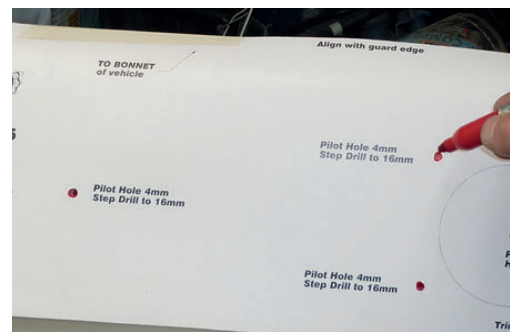
3. Apply masking tape to right hand mudguard and windscreen pillar.



4. Tape template to mudguard making sure it is lined up with top of mudguard (bonnet opening) and rear of mudguard (door opening).



5. Using a felt tipped pen, mark all holes through template onto mudguard. Remove template.



6. Using an 108mm hole saw cut two semi circles as shown. Mark straight lines between the top and bottom of the semi circles and cut along lines using an air hack saw.



7. Drill mounting holes to 16mm.



8. De-burr and rust-proof all holes (this applies to all holes drilled after this step).

9. Using thread-lock screw all studs into snorkel body and attach pillar mounting bracket loosely to snorkel using M6 bolts provided.

10. Hold snorkel body in position on mudguard and mark position of pillar mounting bracket onto pillar. Remove snorkel.



11. Remove pillar bracket from snorkel. Hold against pillar in position previously marked and mark mounting holes. Drill holes to 7.5mm.



12. Apply silicone, insert mounting plugs and attach bracket using self tapping screw provided.



13. Install snorkel body top vehicle using M8 Nylock Nuts, rubber insulating washers, body washers and secure to pillar bracket.



14. Feed rubber hose from engine bay through air entry hole in inner guard and attach to snorkel body. Secure using hose clamp provided.

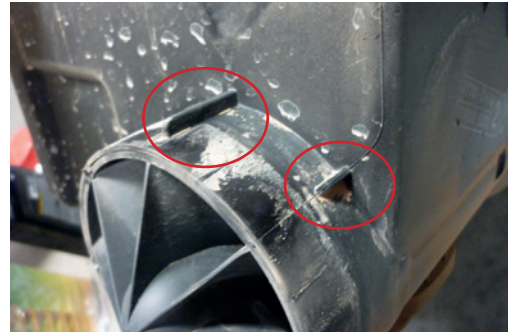
NOTE: 2 Rubber hoses are provided - one suits petrol (Larger hose), the other suits diesel (smaller hose) applications.



15. Remove air entry scoop from air box.



16. Using a grinder or file, remove all tabs from air entry snout on air box. Seal any holes in air box using sensor-safe silicone.



17. Refit air box to vehicle and secure air entry snout to rubber hose using hose clamp provided.

18. Re-fit guard liner and mud flap.

19. Fit Ironman 4x4 Air Ram and secure with hose clamp provided.



20. Check all hose connections and air box for potential leaks and seal as required.