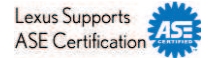


# MIL "ON" DTC P2440/P2442

**Service Category** Engine/Hybrid System

**Section** Emission Control

**Market** USA



## Applicability

YEAR(S)	MODEL(S)	ADDITIONAL INFORMATION
2014 - 2016	GX460	

## Introduction

Some 2014 – 2016 model year GX 460 vehicles may exhibit a MIL "ON" condition with Diagnostic Trouble Code (DTC) P2440 (Secondary Air Injection System Switching Valve Stuck Open, Bank 1) or P2442 (Secondary Air Injection System Switching Valve Stuck Open, Bank 2) and under some conditions may enter limp mode (limited throttle input ~ 25mph). This condition can be triggered by sub-freezing ambient temperatures. Follow the Repair Procedure below to address this condition.

## Production Change Information

This bulletin applies to vehicles produced **BEFORE** the Production Change Effective VIN shown below.

MODEL	PLANT	DRIVETRAIN	PRODUCTION CHANGE EFFECTIVE VIN
GX 460	Tahara	4WD	JTJBM7FX#G5125696

## Warranty Information

OP CODE	DESCRIPTION	TIME	OFF	T1	T2
EG1609	Reprogram ECM (PCM)	0.4	89661-60W10	8A	99

### APPLICABLE WARRANTY

- This repair is covered under the Lexus Federal Emission Warranty. This warranty is in effect for 96 months or 80,000 miles, whichever occurs first, from the vehicle's in-service date.
- Warranty application is limited to occurrence of the specified condition described in this bulletin.

## MIL "ON" DTC P2440/P2442

### Parts Information

MODEL NAME	MODEL YEAR	DRIVETRAIN	PART NUMBER		PART NAME	QTY
			PREVIOUS	NEW		
GX 460	2014 – 2015	4WD	89661-60W10 89661-60W11	89661-60W12	Computer, Engine Control (ECM/PCM)	–
	2016	4WD	89661-60U20	89661-60U21		–
	All	All	00451-00001-LBL		Authorized Modification Labels	1

**NOTE**

- The ECM (PCM) should NOT be replaced as part of the Repair Procedure.
- Authorized Modification Labels may be ordered in packages of 25 from the Materials Distribution Center (MDC) through *Dealer Daily – Dealer Support Materials Orders*.

### Required Tools & Equipment

REQUIRED EQUIPMENT	SUPPLIER	PART NUMBER	QTY
Techstream 2.0*	ADE	TS2UNIT	1
Techstream Lite		TSLITEPDLR01	
Techstream Lite (Green Cable)		TSLP2DLR01	

**NOTE**

- Only ONE of the Techstream units listed above is required.
- Software version 11.10.034 or later is required.
- Additional Techstream units may be ordered by calling Approved Dealer Equipment (ADE) at 1-800-368-6787.
- The Diagnostic Tester is NOT recommended for flash reprogramming. Please use Techstream or an approved J2534 interface to perform flash reprogramming updates. Visit [techinfo.toyota.com](http://techinfo.toyota.com) for more information regarding J2534 reprogramming.



SPECIAL SERVICE TOOLS (SST)	PART NUMBER	QTY
GR8 Battery Diagnostic Station*	<a href="#">00002-MCGR8</a>	1

**NOTE**

Additional SSTs may be ordered by calling 1-800-933-8335.

\* Essential SST.

## MIL "ON" DTC P2440/P2442

---

### Calibration Information

MODEL	DRIVETRAIN	ENGINE	MODEL YEAR	CALIBRATION ID	
				PREVIOUS	NEW
GX 460	4WD	1UR-FE	2014 – 2015	360Q9000 360Q9100	<a href="#">360Q9200</a>
			2016	360X8000	<a href="#">360X8100</a>

### Repair Procedure

1. Confirm the condition.  
Using Techstream, perform a Health Check. Was DTC P2440 or P2442 retrieved?
  - **YES** — Continue to step 2.
  - **NO** — This bulletin does NOT apply. Continue diagnosis using the applicable Repair Manual.

**MIL "ON" DTC P2440/P2442**

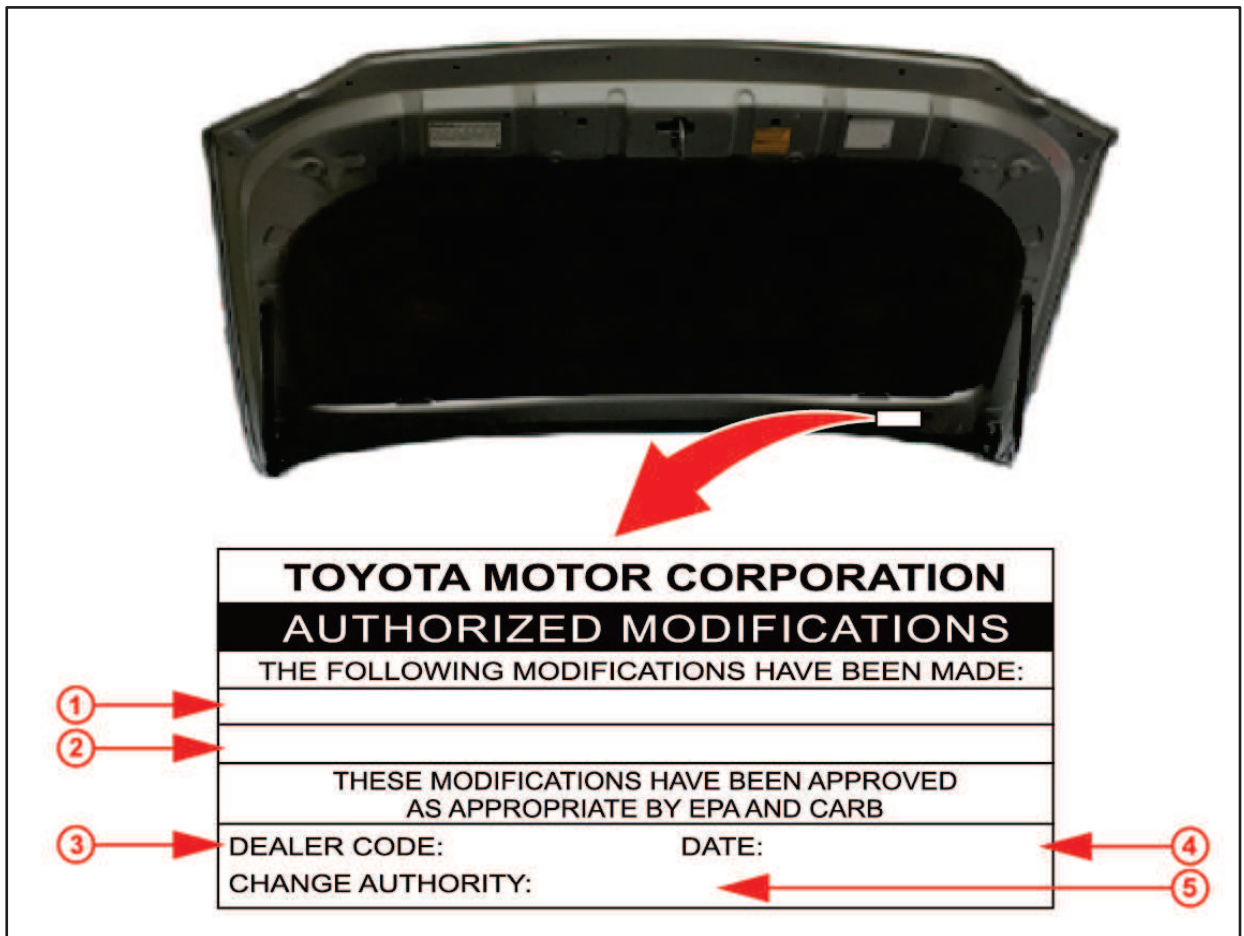
**Repair Procedure (Continued)**

2. Check for the Authorized Modification Label affixed to the vehicle in the location shown below. Confirm the ECM (PCM) calibration has been updated.

Is the calibration ID listed NOT the latest ECM (PCM) calibration?

- **YES** — Continue to step 3.
- **NO** — This bulletin does NOT apply. Continue diagnosis using the applicable Repair Manual.

**Figure 1. Location of Authorized Modification Label for 2014 – 2016 GX 460**



<b>1</b>	Replacement ECM (PCM) Part Number (i.e., 89661-60W12 or 89661-60U21)
<b>2</b>	New Calibration ID (i.e., 360Q9200 or 360X8100)
<b>3</b>	Dealer Code

<b>4</b>	Date Completed
<b>5</b>	This SB Number

## MIL "ON" DTC P2440/P2442

---

### Repair Procedure (Continued)

- Flash reprogram the ECM (PCM).

**NOTE**

- The GR8 Battery Diagnostic Station **MUST** be used in Power Supply Mode to maintain battery voltage at 13.5 volts while flash reprogramming vehicle.
- For details on how to use the GR8 Battery Diagnostic Station, refer to the [GR8 Instruction Manual](#) located on the Technical Information System (TIS), *Diagnostics – Tools & Equipment – Battery Diagnostics*.

Follow the procedures outlined in Service Bulletin No. [L-SB-0021-14](#) "Techstream ECU Flash Reprogramming Procedure," and flash the ECM (PCM) with the NEW calibration file update.

- Install the Authorized Modifications Label.
  - Using a permanent marker, enter the following information on the label:
    - ECM part number [*Refer to the **Parts Information** section for the **NEW PART NUMBER***]
    - Calibration ID(s) [*Refer to the **Calibration Information** section for the **NEW CALIBRATION ID***]
    - Dealer Code
    - Repair Date
    - Change Authority [**This bulletin number**]
  - Affix the Authorized Modifications Label to the vehicle at the location shown in Figure 1. The Authorized Modifications Label is available through the MDC, P/N 00451-00001-LBL.
- Test drive the vehicle to confirm proper vehicle operation.