

# Techstream ECU Flash Reprogramming Procedure

**Service Category** Engine/Hybrid System

**Section** Emission Control

**Market** USA

Lexus Supports  
ASE Certification 

## Applicability

YEAR(S)	MODEL(S)	ADDITIONAL INFORMATION
2001 – 2017	CT200H, ES300, ES300H, ES330, ES350, GS200T, GS300, GS350, GS430, GS450H, GS460, GX460, GX470, HS250H, IS F, IS200T, IS250, IS250C, IS300, IS350, IS350C, LFA, LS430, LS460, LS600H, LX470, LX570, NX200T, NX300H, RC F, RC200T, RC350, RX300, RX330, RX350, RX400H, RX450H, SC430	

### REVISION NOTICE

#### September 19, 2016 Rev2:

- Applicability section has been updated to include 2016 – 2017 applicable model year Lexus vehicles.
- The Repair Procedure section, Required Tools & Equipment section, and the Repair Procedure section has been updated.

#### October 23, 2014 Rev1:

- Applicability has been updated to include 2015 model year NX 200t, NX 300h, RC 350, and RC F vehicles.
- The Required Tools & Equipment section has been updated.

Any previous printed versions of this bulletin should be discarded.

## Techstream ECU Flash Reprogramming Procedure

---

### **SUPERSESSION NOTICE**

The information contained in this bulletin supersedes SB No. L-SB-0015-10.

- Applicability has been updated to include 2015 model year Lexus vehicles.

Service Bulletin No. L-SB-0015-10 is Obsolete and any printed versions should be discarded. Be sure to review the entire content of this bulletin before proceeding.

### Introduction

Flash reprogramming allows the ECU software to be updated without replacing the ECU. Flash calibration updates for specific vehicle models/ECUs are released as field-fix procedures described in individual Service Bulletins. This bulletin details the Techstream ECU flash reprogramming process and outlines use of the Technical Information System (TIS) and the Calibration Update Wizard (CUW). Flash calibration updates can only be applied to the vehicle/ECU combination for which they are intended. ECUs have internal security that will not allow them to be programmed with another ECU's information.

### **ECU**

Electronic Control Unit (ECU) is a Lexus term used to describe integrated computerized devices responsible for managing the operation of a system or subsystem. For the purposes of this bulletin, the term "ECU" is used as a generic label for the following SAE J1930 standard references:

- Powertrain Control Module (PCM)
- Engine Control Module (ECM)
- Transmission Control Module (TCM)
- Or any other Lexus specific control unit

### Warranty Information

OP CODE	DESCRIPTION	TIME	OFP	T1	T2
N/A	Not Applicable to Warranty	–	–	–	–

## Techstream ECU Flash Reprogramming Procedure

### Parts Information

PREVIOUS PART NUMBER	CURRENT PART NUMBER	PART NAME	QTY
00451-00001-LBL	Same	Authorized Modification Labels	1

**NOTE**

Authorized Modification Labels may be ordered in packages of 25 from the Materials Distribution Center (MDC) through Dealer Daily – Parts – Dealer Support Material Order.

### Required Tools & Equipment

REQUIRED EQUIPMENT	SUPPLIER	PART NUMBER	QTY
Techstream 2.0*	ADE	TS2UNIT	1
Techstream Lite		TSLITEPDLR01	
Techstream Lite (Green Cable)		TSLP2DLR01	

**NOTE**

- Only ONE of the Techstream units listed above is required.
- Software version 11.20.019 or later is required.
- Additional Techstream units may be ordered by calling Approved Dealer Equipment (ADE) at 1-800-368-6787.
- The Diagnostic Tester is NOT recommended for flash reprogramming. Please use Techstream or an approved J2534 interface to perform flash reprogramming updates. Visit [techinfo.toyota.com](http://techinfo.toyota.com) for more information regarding J2534 reprogramming.



SPECIAL SERVICE TOOLS (SST)	PART NUMBER	QTY
GR8 Battery Diagnostic Station*	<a href="#">00002-MCGR8</a>	1

**NOTE**

Additional SSTs may be ordered by calling 1-800-933-8335.

\* Essential SST.

## Techstream ECU Flash Reprogramming Procedure

### Techstream Preparation

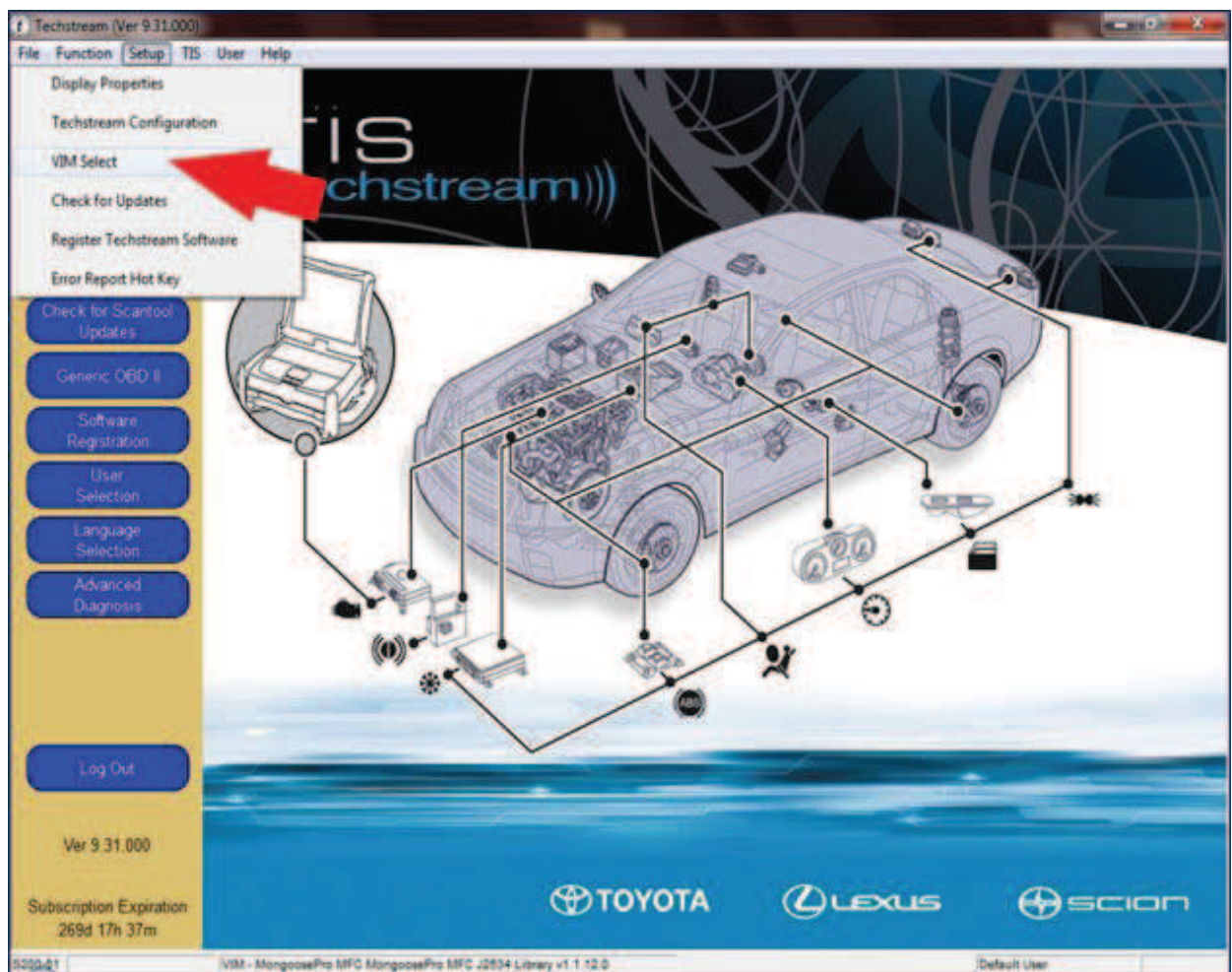
#### Selecting the Correct VIM.

Techstream software requires a VIM selection before it can be used for reprogramming.

Perform the following:

1. Select *Setup* from the Techstream Main Menu screen.
2. Select *VIM Select* from the Setup drop down menu.

Figure 1.



## Techstream ECU Flash Reprogramming Procedure

---

### Techstream Preparation (Continued)

3. Select the correct Interface Setup from the drop down list.
  - If using Techstream 2.0, select *MongoosePro MFC*.
  - If using Techstream Lite, select *Mongoose MFC*, *MongoosePro MFC*, or *MongoosePro MFC2* (green) depending on the cable being used.

**NOTE**

**Mongoose Driver MUST be installed before Mongoose selections will be available.**

**See *TIS – Diagnostics – Scantool* page for additional information.**

4. Click *OK*.

### Process Overview

Techstream ECU flash reprogramming is a 4-step process:

1. Verify the vehicle's applicability for recalibration and locate desired calibration file by performing the Techstream Health Check function.

**NOTE**

**Techstream will automatically search TIS for the appropriate Service Bulletin using the current Calibration ID from the vehicle. Calibration file links can be found embedded in the corresponding Service Bulletin.**

2. Connect the GR8 Battery Diagnostic Station using "Power Supply Mode" only.

The GR8 Battery Diagnostic Station includes a Power Supply Mode to help maintain battery voltage at 13.5 volts during ECU reprogramming.

**NOTICE**

- ECU damage may occur if the correct battery charger mode setting is NOT used.
- Refer to [Vehicle Reprogramming Tips](#) for other approved Chargers, located on TIS, *Diagnostics – Reprogramming – Calibrations – Reference Documents*.

3. Locate appropriate calibration ID and reprogram the vehicle ECU with Techstream.

Techstream uses the Calibration Update Wizard (CUW) application to open calibration files and facilitate the ECU flash reprogramming process.

4. Attach the Authorized Vehicle Modification Label.

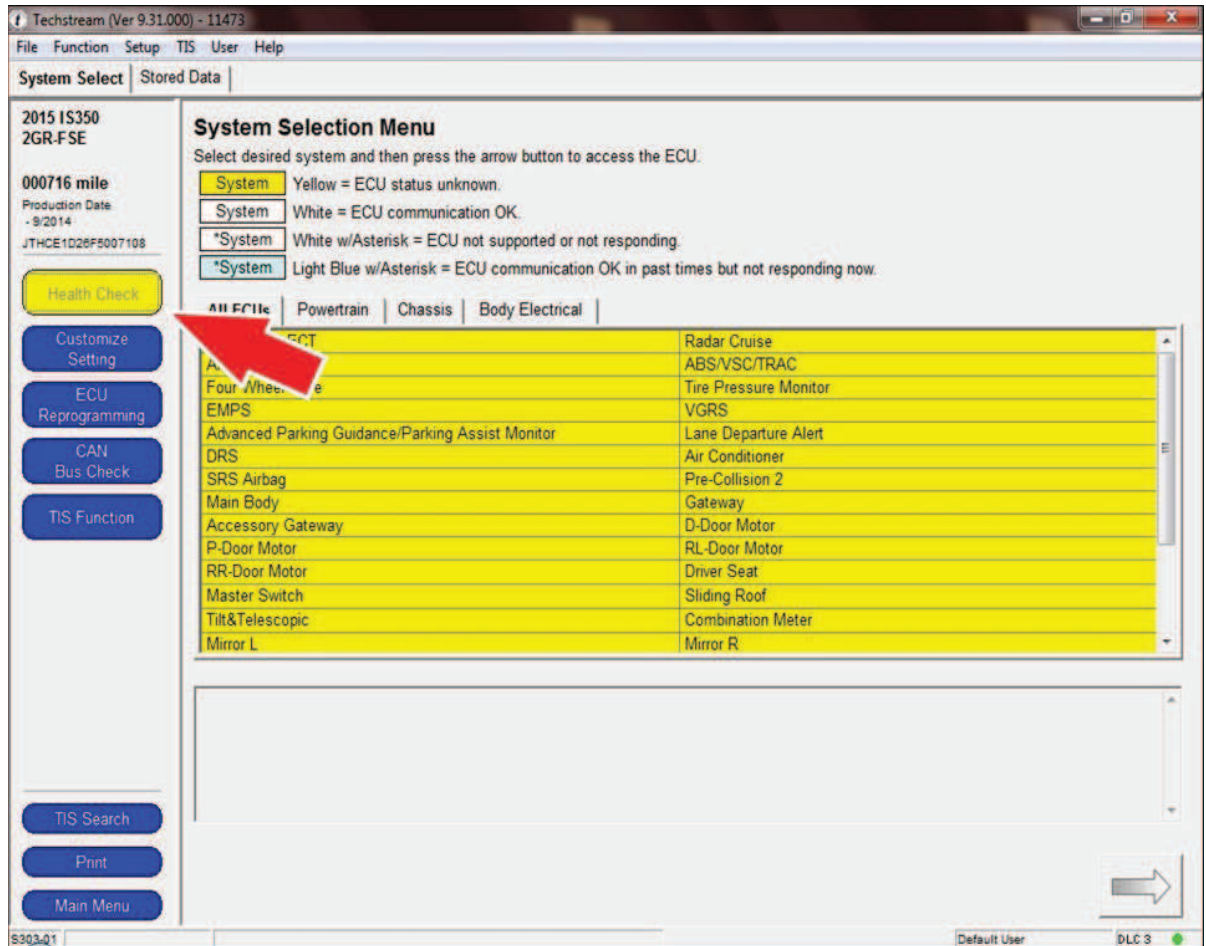
Modifications to ECU calibrations MUST be recorded and properly displayed on the vehicle using the Authorized Modification Label.

# Techstream ECU Flash Reprogramming Procedure

## Operation Procedure

1. Verify the vehicle's applicability for recalibration and locate desired calibration file.
  - A. Connect Techstream and establish a vehicle connection.
  - B. Click the *Health Check* button on the *System Select* tab.

**Figure 2.**



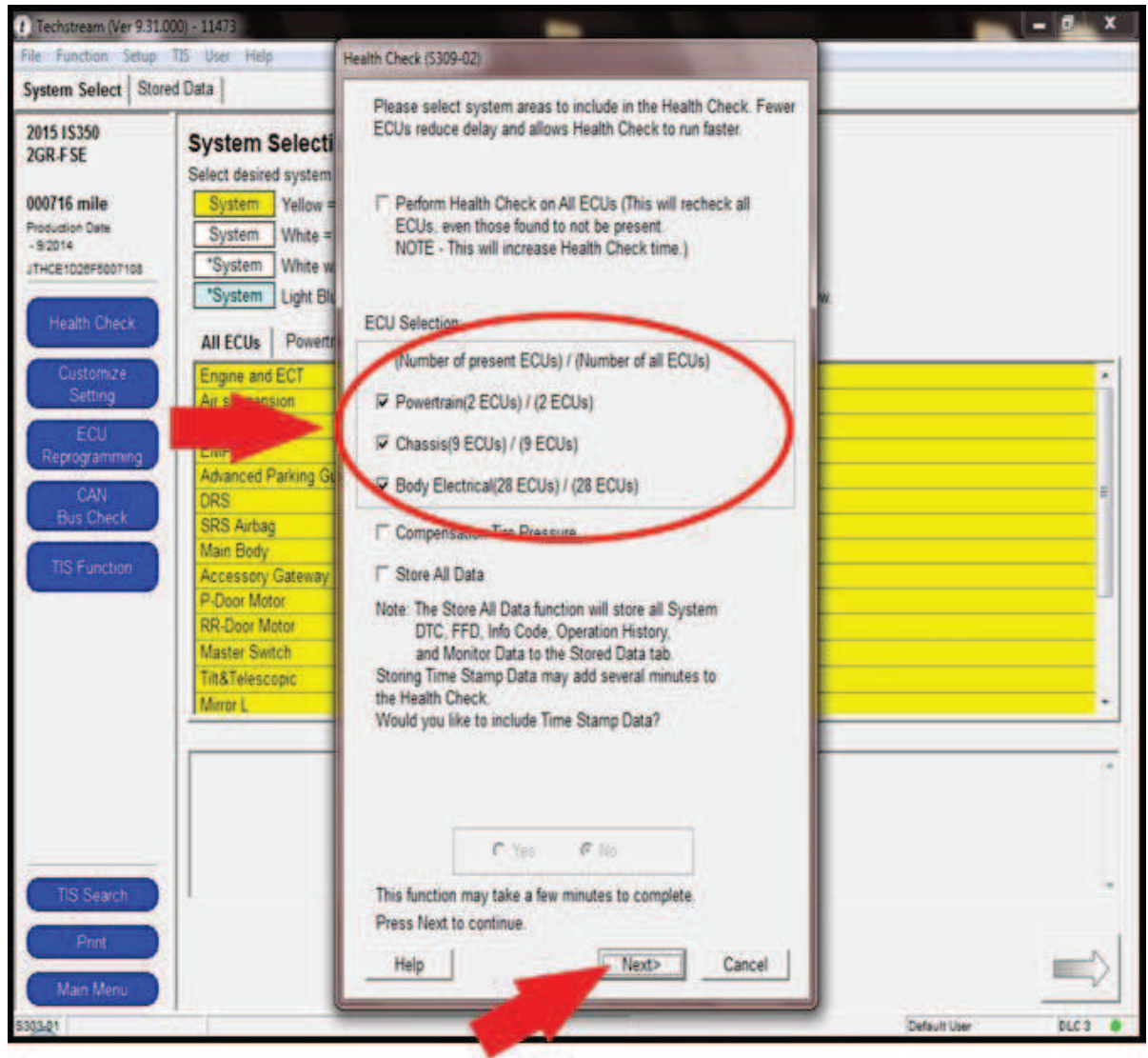


# Techstream ECU Flash Reprogramming Procedure

## Operation Procedure (Continued)

C. Choose desired ECU group(s) in the *Health Check* dialog box.

Figure 3.



D. Click *Next*.

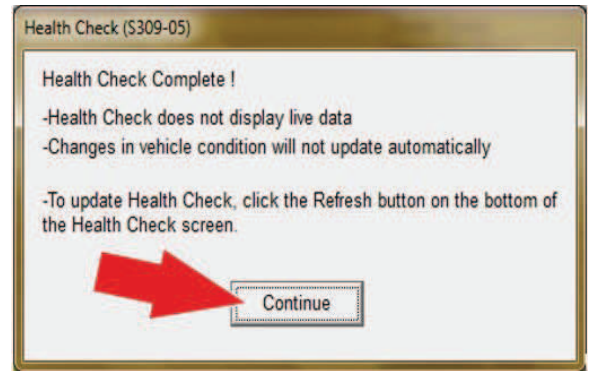
## Techstream ECU Flash Reprogramming Procedure

---

### Operation Procedure (Continued)

E. Click *Continue* to view Health Check results.

Figure 4.





# Techstream ECU Flash Reprogramming Procedure

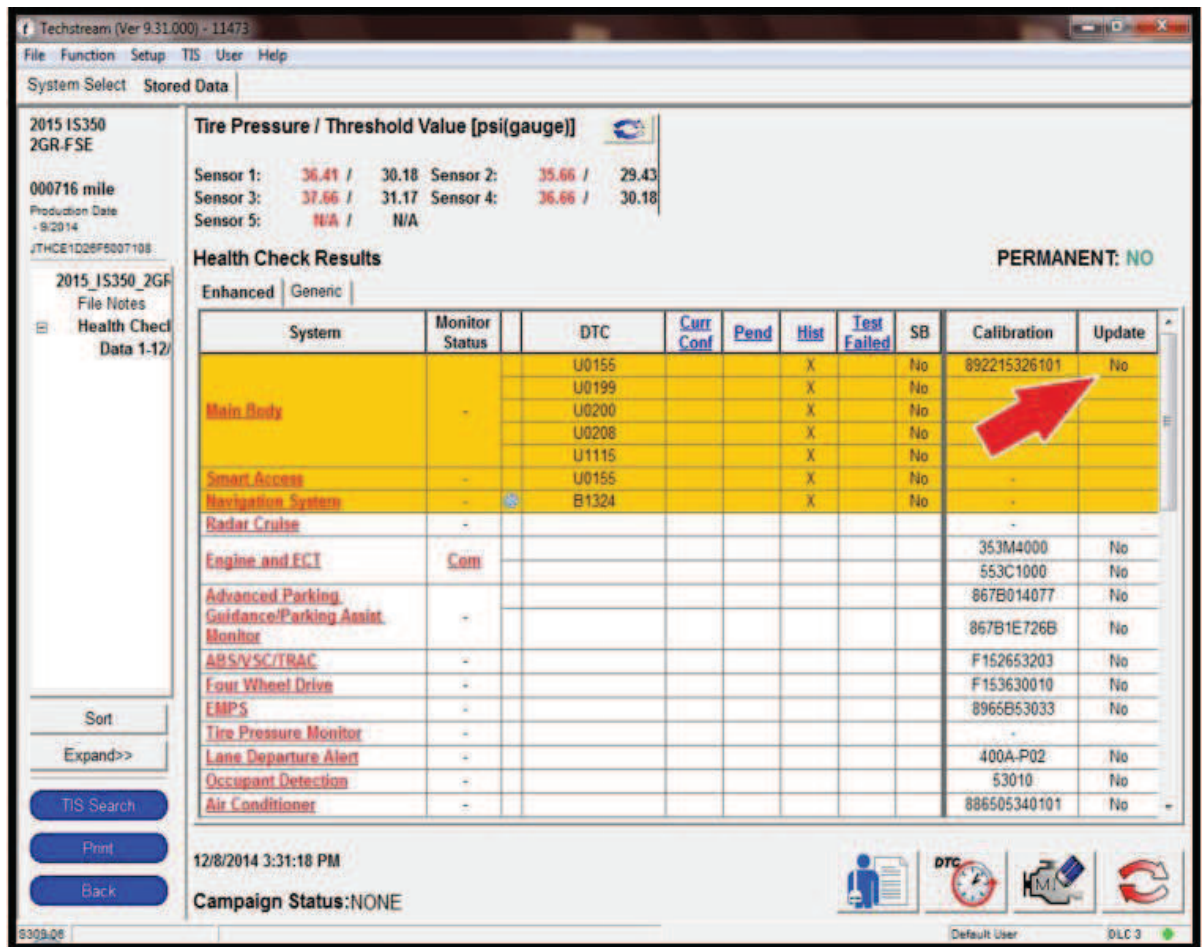
## Operation Procedure (Continued)

F. Available calibration updates are indicated by a **Yes** link in the *Cal. Update* column. Click the **Yes** link to access the appropriate Service Bulletin on TIS.

**NOTE**

- Note any DTCs stored in systems that will be flash reprogrammed.
- Clicking the **Yes** link will automatically launch TIS and perform a calibration search.

Figure 5.



G. Log in to TIS. (If already logged in, skip this step.)

# Techstream ECU Flash Reprogramming Procedure

## Operation Procedure (Continued)

H. To review the Service Bulletin and access the calibration file, click the Service Bulletin link in the *Document Title* column of the *Calibration Search Result* portlet.

**NOTE**

Only Lexus Certified Technicians and above may access calibration files.

Figure 6.

The screenshot shows the Techstream interface with the 'Reprogramming' tab selected. The 'Calibrations' portlet is active, displaying a search form and a table of results. The search form has 'Calibration ID/Multimedia ID' selected as the search criteria, with the value '896637805500' entered. The 'Reference Documents' section lists 'Multimedia Software Download Instructions', 'Vehicle Reprogramming Tips', and 'Lexus ECU Flash Reprogramming Bulletin L-SB-0021-14'. The table below shows 'ECU Calibrations (1)' with columns for 'Current ECU CAL ID', 'New ECU CAL ID', 'Document Title (Release Date)', 'Year / Model / VDS', and 'Market'. A red arrow points to the 'Document Title' column, highlighting the entry for 'L-SB-0041-16: '15-'16 NX200T: MIL "ON" P019023 - High Pressure Fuel Sensor Signal Stuck Low (2016-08-01)'.

Current ECU CAL ID	New ECU CAL ID	Document Title (Release Date)	Year / Model / VDS	Market
896637805200				
896637805300				
896637805400				
896637806200	896637805500	L-SB-0041-16: '15-'16 NX200T: MIL "ON" P019023 - High Pressure Fuel Sensor Signal Stuck Low (2016-08-01)	2015 / NX200T / BARBZ 2015 / NX200T / YARBZ 2016 / NX200T / BARBZ 2016 / NX200T / YARBZ	
896637806300	896637806500			
896637806400	896637807500			
896637807200				
896637807300				
896637807400				

# Techstream ECU Flash Reprogramming Procedure

## Operation Procedure (Continued)

2. Connect the GR8 Battery Diagnostic Station.

**NOTE**

Refer to [Vehicle Reprogramming Tips](#) for other approved Chargers, located on TIS, *Diagnostics – Reprogramming – Reference Documents*.

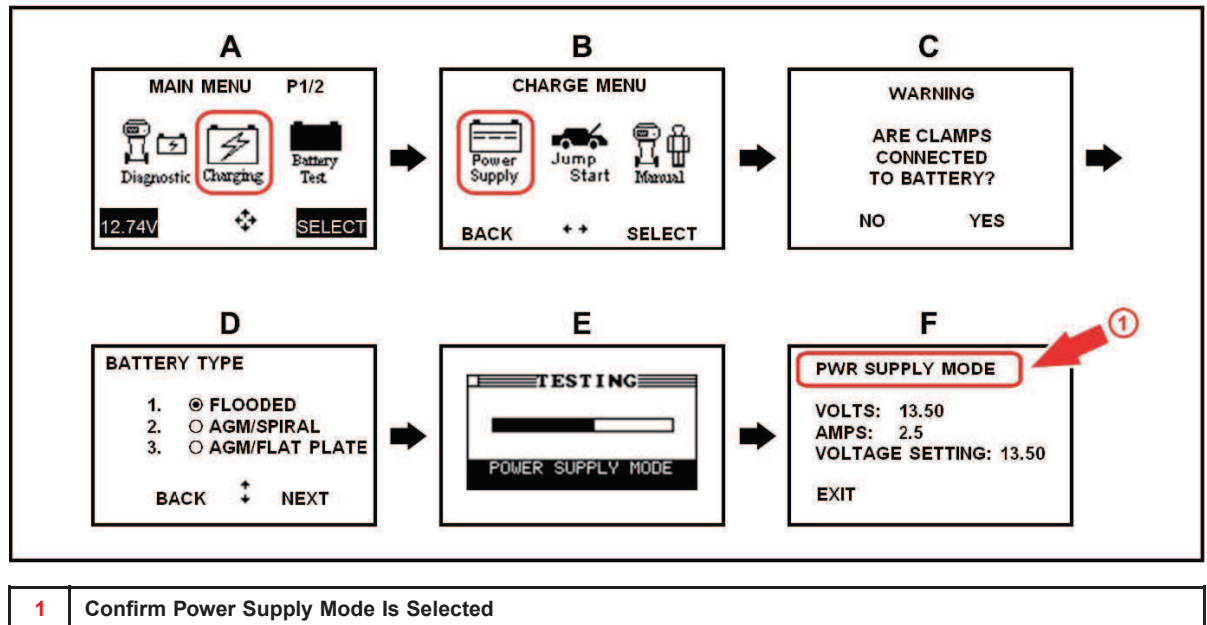
A. Connect the GR8 Battery Diagnostic Station to the vehicle and turn it ON.

B. Select Power Supply Mode by following the screen flow below.

**NOTICE**

- ECU damage may occur if the correct battery charger and mode setting are NOT used.
- Power Supply Mode is used to maintain battery voltage at 13.5 volts while flash reprogramming the vehicle.
- For details on how to use the GR8 Battery Diagnostic Station, refer to the [GR8 Instruction Manual](#) located on TIS, *Diagnostics – Tools & Equipment – Battery Diagnostics*.

Figure 7.



# Techstream ECU Flash Reprogramming Procedure

## Operation Procedure (Continued)

3. Click the appropriate calibration ID and reprogram the vehicle's ECU with Techstream.
  - A. After reviewing the procedures outlined in the selected Service Bulletin, click the appropriate calibration ID link by matching the vehicle's current calibration ID to the Previous Calibration ID in the Calibration Identification Chart.

**NOTE**

- Calibration files are embedded as live links in the Service Bulletin.
- Some vehicles require special preparation — please review the selected Service Bulletin carefully.

Figure 8.

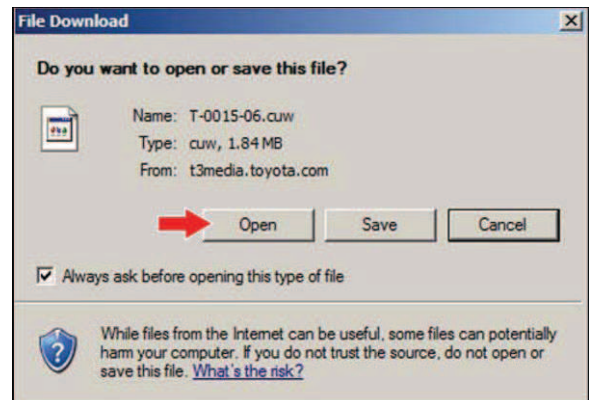
M.I.L. "ON" DTC P0031, P0051, P2238, AND/OR P2241 – EG002-05 Revised				February 9, 2005
Calibration Identification Chart	MODEL	ECM (CPU)	PREVIOUS CALIBRATION ID	NEW CALIBRATION ID
	2004 RX 330 FF (2WD) Sequential Shift (SS) Transmission		Main	34815000 34815100 34815200
Sub			54803000 54803100	<a href="#">54813100</a>
2004 RX 330 FF (2WD) Gate Shift (GS) Transmission		Main	34816000 34816100 34816200	<a href="#">34846100</a>
		Sub	54804000 54804100	<a href="#">54814100</a>
2004 RX 330 (4WD) Sequential Shift (SS) Transmission		Main	34817000 34817100 34817200	<a href="#">34847000</a>
		Sub	54805000 54805100	<a href="#">54815000</a>
2004 RX 330 (4WD) Gate Shift (GS)		Main	34818000 34818100 34818200	<a href="#">34848000</a>

- B. Click *Open* to load calibration file information.

Figure 9.

**NOTE**

Techstream pulls calibration files as needed to ensure the latest calibration file is used. Do NOT save calibrations locally on the hard drive or other media.



## Techstream ECU Flash Reprogramming Procedure

### Operation Procedure (Continued)

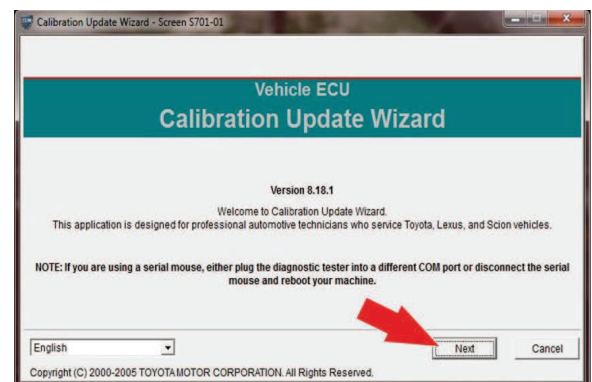
#### NOTICE

Errors during the flash reprogramming process can permanently damage the vehicle ECU. Minimize the risk by following the steps below.

- Battery voltage **MUST NOT FALL BELOW 11.8 volts** during reprogramming. Confirm battery voltage is higher than 11.8 volts, but be sure voltage **DOES NOT RISE ABOVE 16.0 volts** during reprogramming.
- Turn OFF all vehicle accessories (e.g. audio system, A/C, interior lights, DRL, etc.). Do NOT add to or significantly change the vehicle's electrical load while reprogramming.
- Confirm the hood is open and ensure under hood temperature does NOT exceed 158°F (70°C).
- Confirm cable connections between the vehicle and Techstream are secure.
- Do NOT disconnect or turn off Techstream or vehicle ignition during reprogramming.
- Set parking brake.
- Complete ALL flash calibration updates provided for each ECU.
- If the battery's state of charge or capacity are in question, test with SST. No. [00002-V8150-KIT](#) "Digital Battery Analyzer," and follow Service Bulletin No. [PG001-06](#), "Battery Maintenance for In-Stock Vehicles & Pre-Delivery", or the appropriate "Maintenance for HV & Auxiliary Batteries" Service Bulletin.
- The GR8 Battery Diagnostic Station MUST be used in Power Supply Mode to maintain battery voltage at 13.5 volts while flash reprogramming the vehicle. For details on how to use the GR8 Battery Diagnostic Station, refer to the [GR8 Instruction Manual](#) located on TIS, *Diagnostics – Tools & Equipment – Battery Diagnostics*.

- C. Click *Next* to start the calibration update process.

Figure 10.





## Techstream ECU Flash Reprogramming Procedure

---

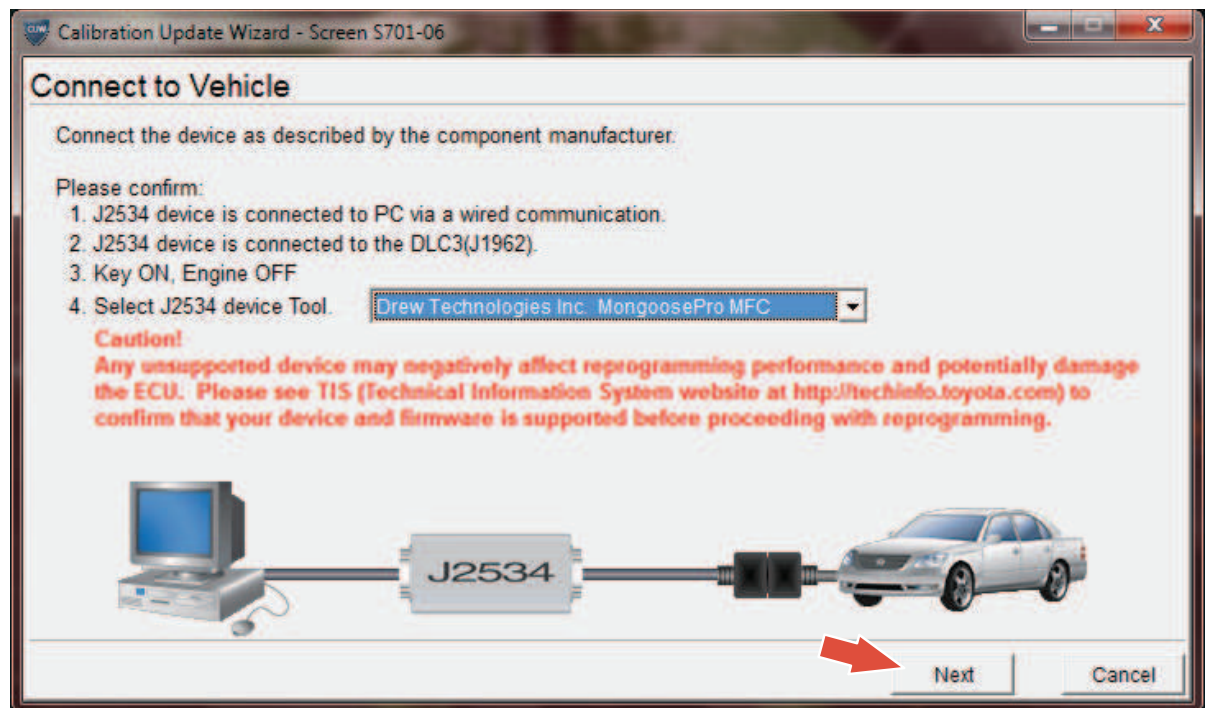
### Operation Procedure (Continued)

D. Confirm the following:

- PC is connected to VIM.
- VIM is connected to DLC3 connector.
- Ignition is ON and engine is OFF or “READY” OFF (hybrid vehicles).

Then click *Next*.

**Figure 11. Using Techstream 2.0 or Techstream Lite**





## Techstream ECU Flash Reprogramming Procedure

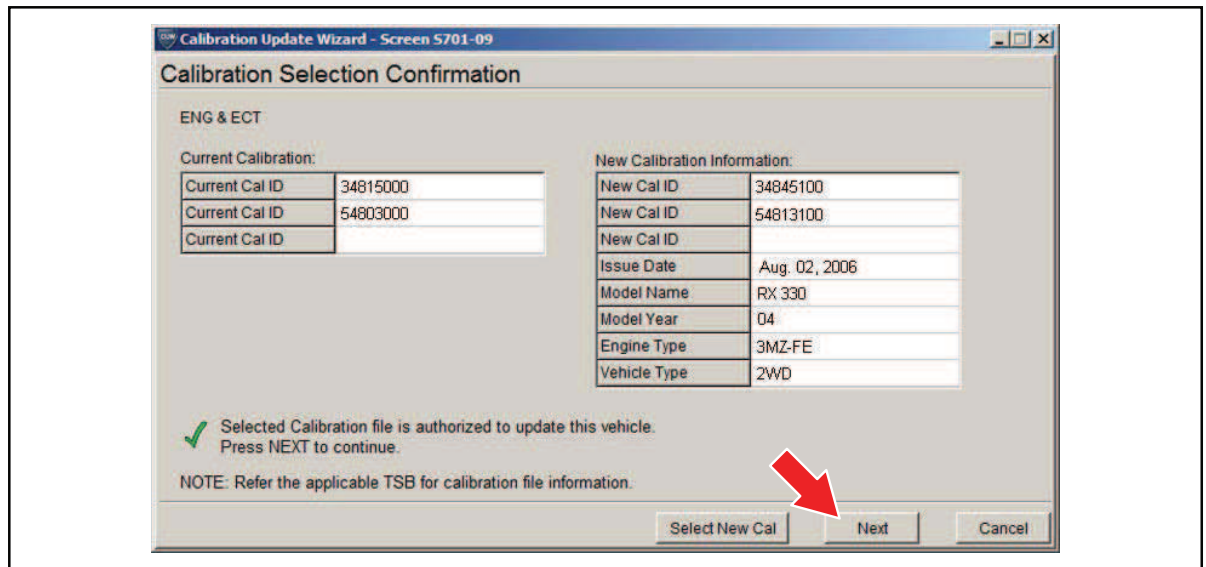
### Operation Procedure (Continued)

E. Verify correct current calibration and new calibration information. Then click *Next*.

**NOTE**

- The total number of calibration IDs in the calibration file corresponds to the number of reprogrammable processors in the ECU.
- Each calibration file may contain up to three separate calibrations.
- Figure 15 shows an example of the update procedure for a two-processor ECU.

Figure 13.

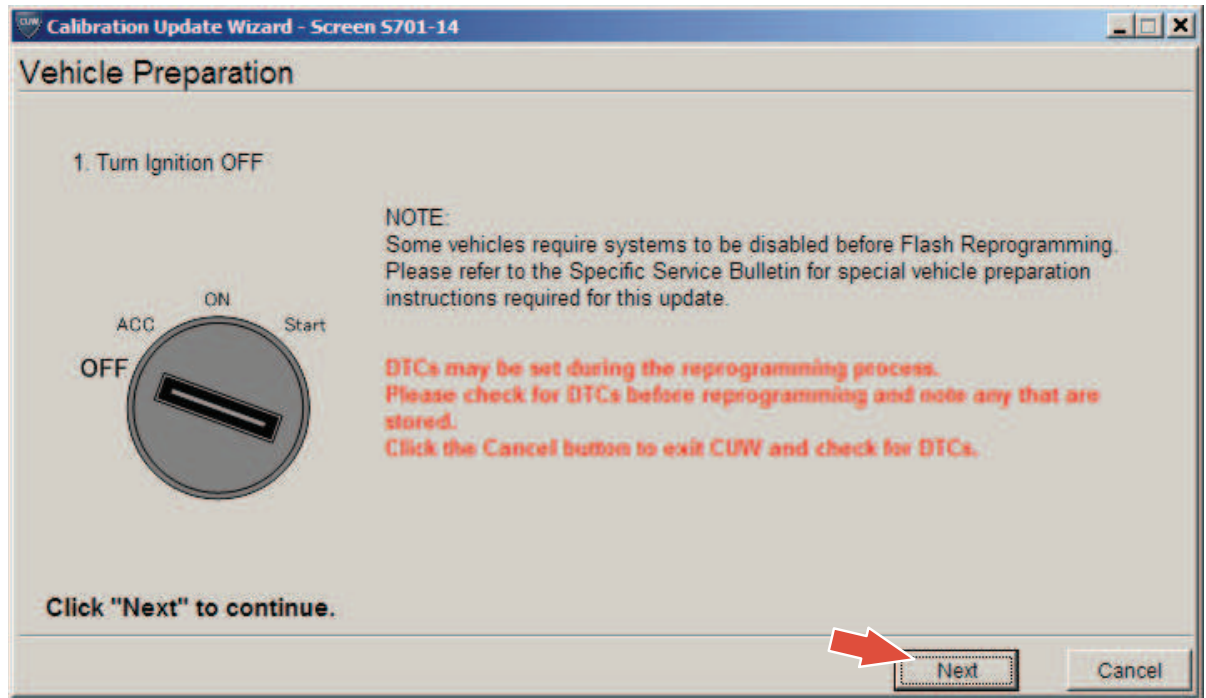


# Techstream ECU Flash Reprogramming Procedure

## Operation Procedure (Continued)

F. Turn ignition OFF. Then click *Next*.

Figure 14.



## Techstream ECU Flash Reprogramming Procedure

### Operation Procedure (Continued)

G. Confirm the following:

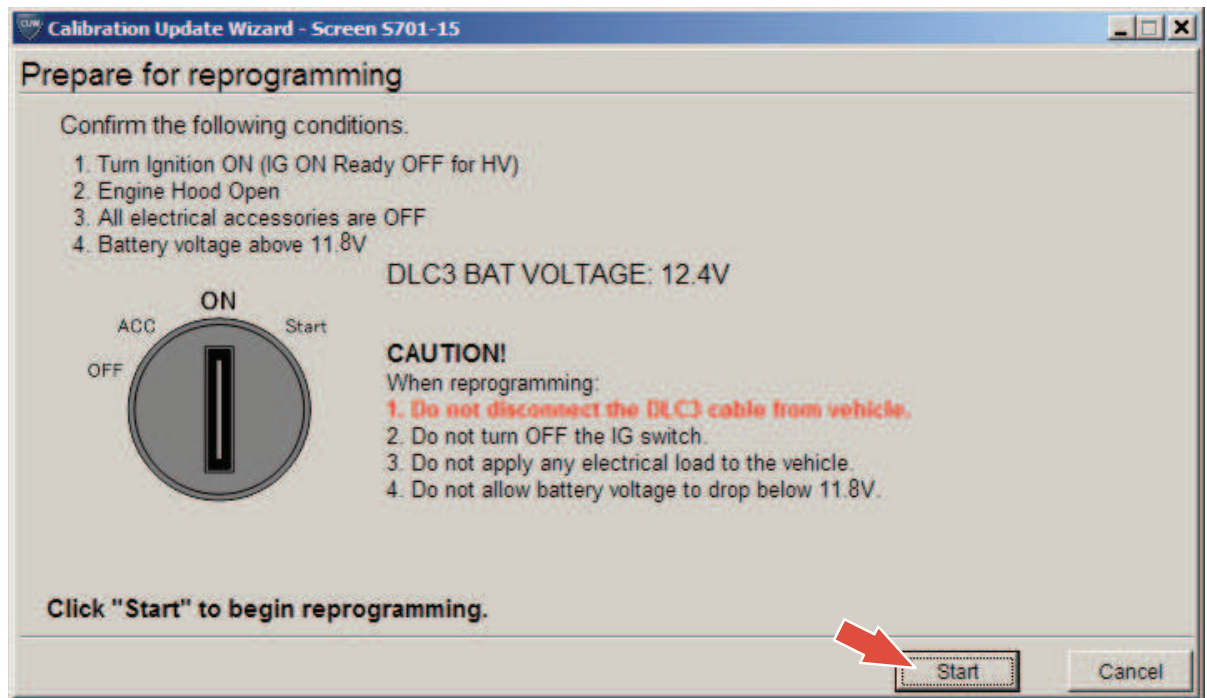
- Ignition is ON and engine is OFF or “READY” OFF (hybrid vehicles).
- Hood is open.
- All accessories are OFF.
- Battery voltage is above 11.8 volts.

**NOTICE**

Verify the vehicle is connected to a battery charger before continuing — If battery voltage falls below 11.8 volts, ECU damage may occur.

Then click *Start*.

Figure 15.



**NOTE**

If key cycle is NOT done properly, reprogramming will stop at 10% and Cal 1 will fail to load.

## Techstream ECU Flash Reprogramming Procedure

---

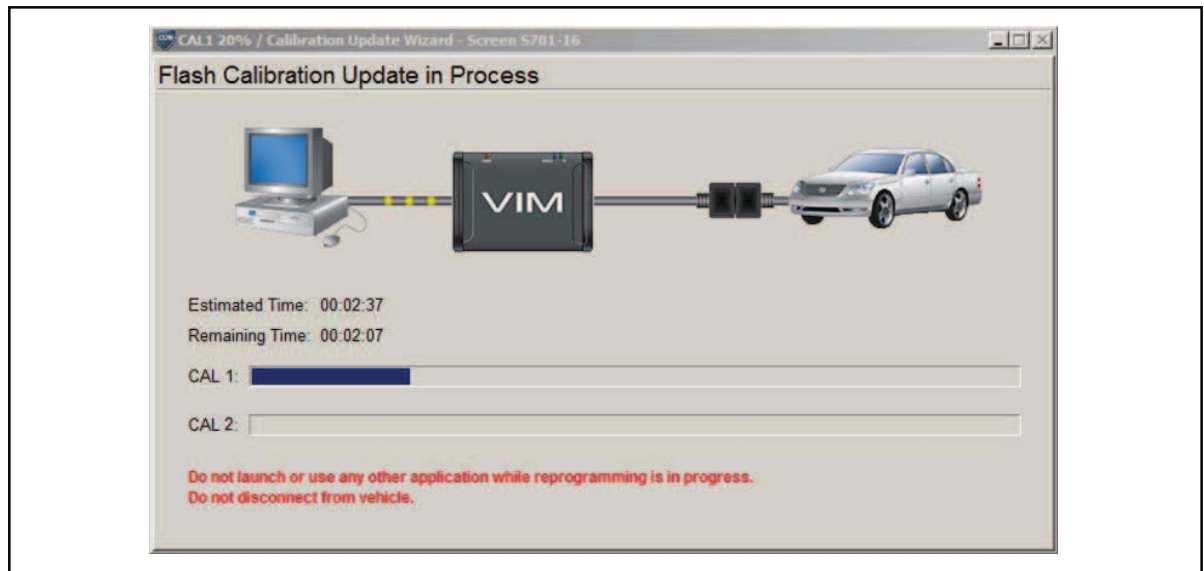
### Operation Procedure (Continued)

H. Do NOT disturb the vehicle during flash reprogramming.

#### NOTE

- ECU flash reprogramming may take anywhere from 3 – 30 minutes per calibration file.
- Reprogramming time will vary depending on model and ECU communication protocol. Vehicles using CAN communication protocol will reprogram much faster (2 – 7 minutes).

Figure 16.



#### NOTE

- If vehicle requires only ONE calibration update, then proceed to step N in this bulletin.
- If vehicle requires a SECOND calibration update, then continue as follows:
  - For serial communication vehicles, go to step I.
  - For CAN communication vehicles, go to step K.

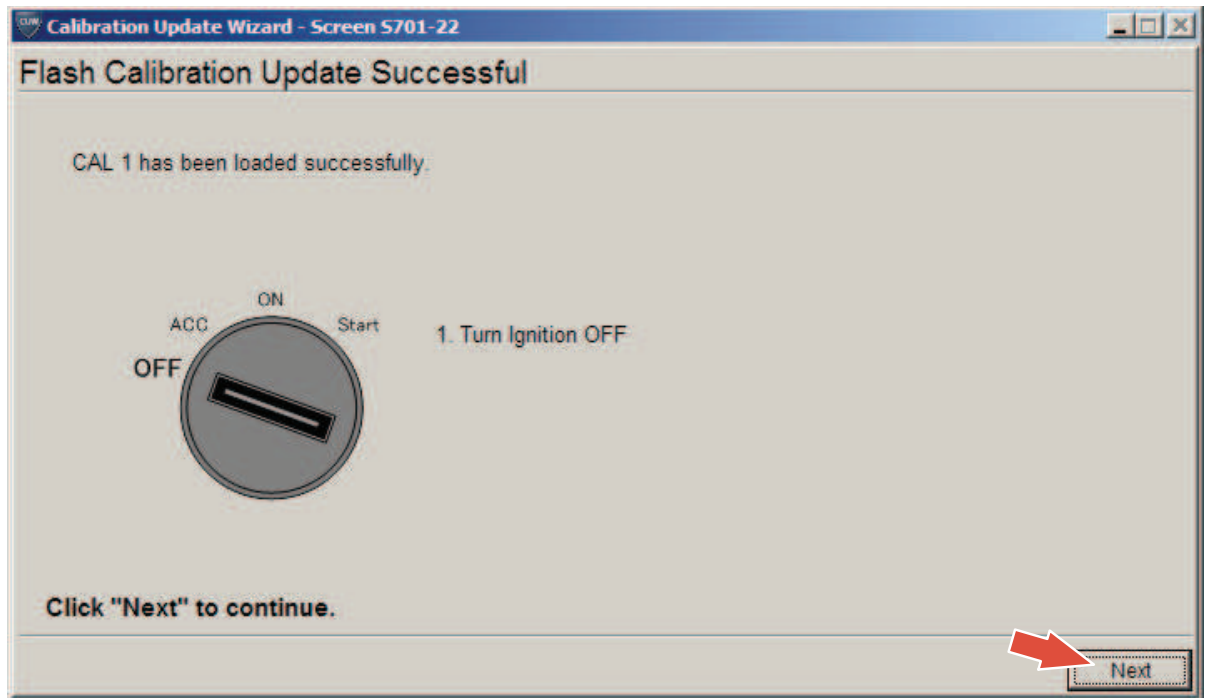
## Techstream ECU Flash Reprogramming Procedure

---

### Operation Procedure (Continued)

- I. When Cal 1 has completed the update process, turn ignition OFF for a minimum of 10 seconds. Then click *Next*.

Figure 17.

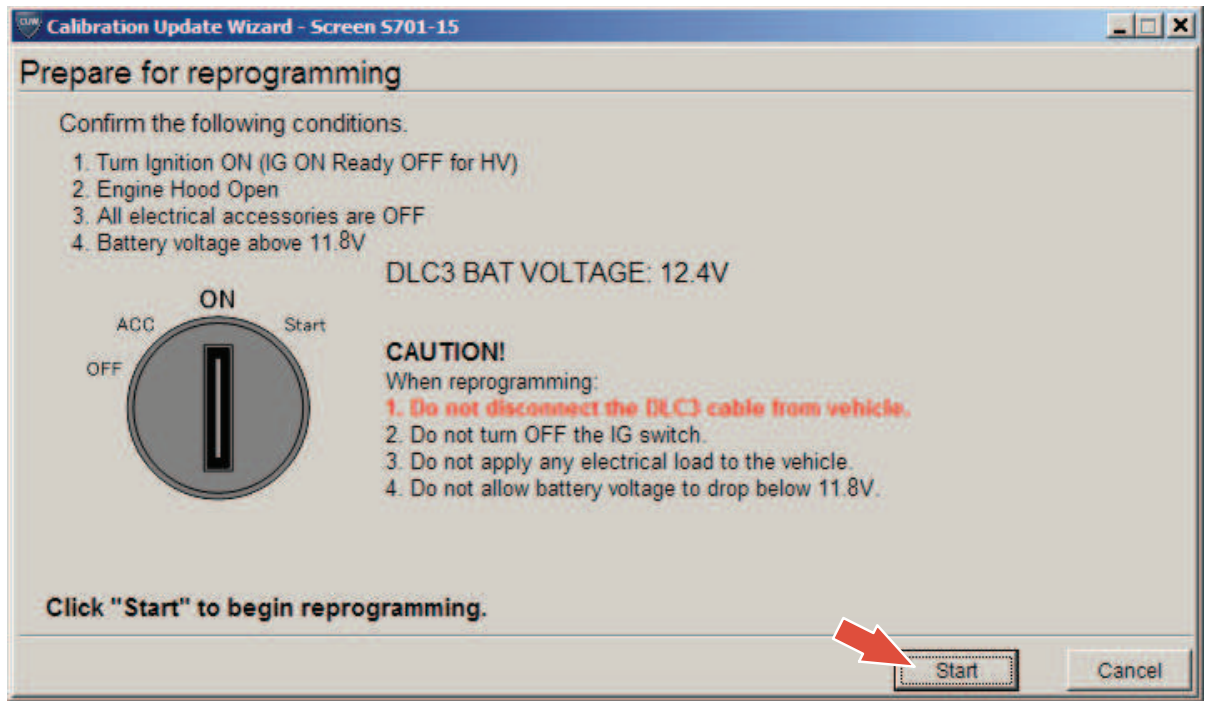


## Techstream ECU Flash Reprogramming Procedure

### Operation Procedure (Continued)

J. Turn ignition to the ON position. Then click *Start*.

Figure 18.



**NOTE**

If key cycle is NOT done properly, reprogramming will stop at 10% and Cal 2 will fail to load.

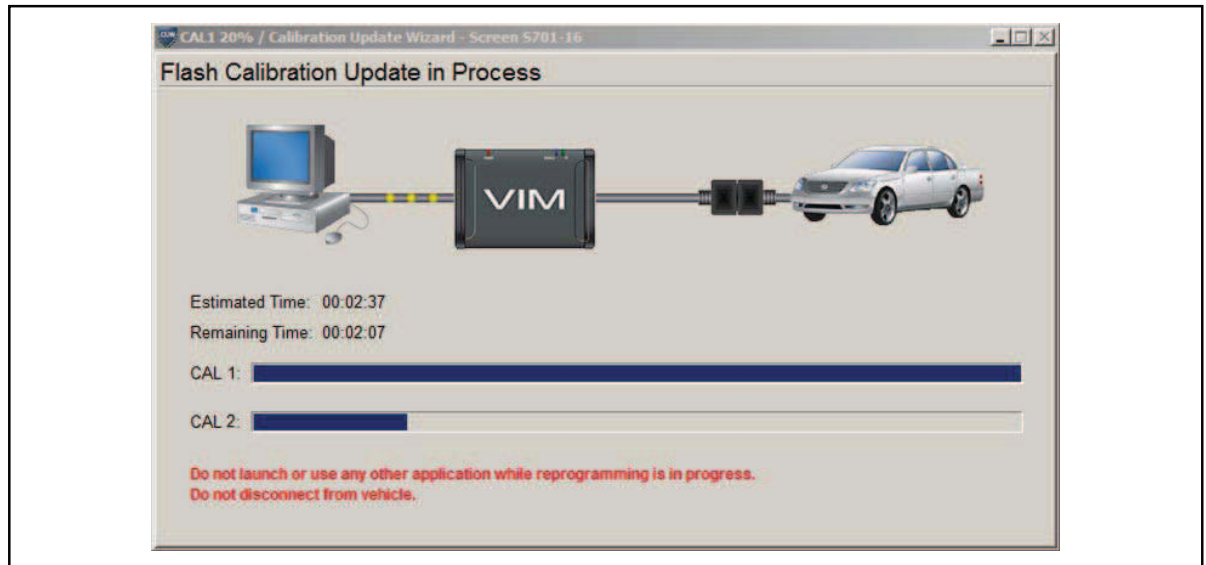


# Techstream ECU Flash Reprogramming Procedure

## Operation Procedure (Continued)

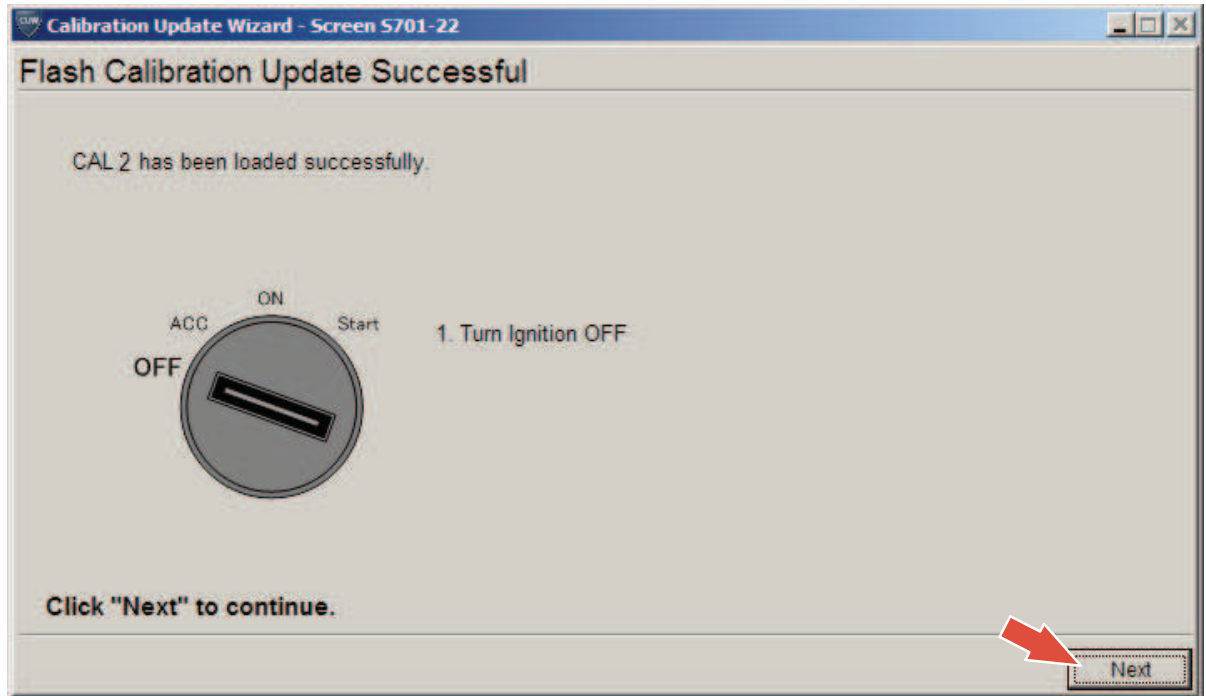
- K. Do NOT disturb the vehicle during flash reprogramming.

Figure 19.



- L. Turn ignition OFF for a minimum of 10 seconds. Then click *Next*.

Figure 20.



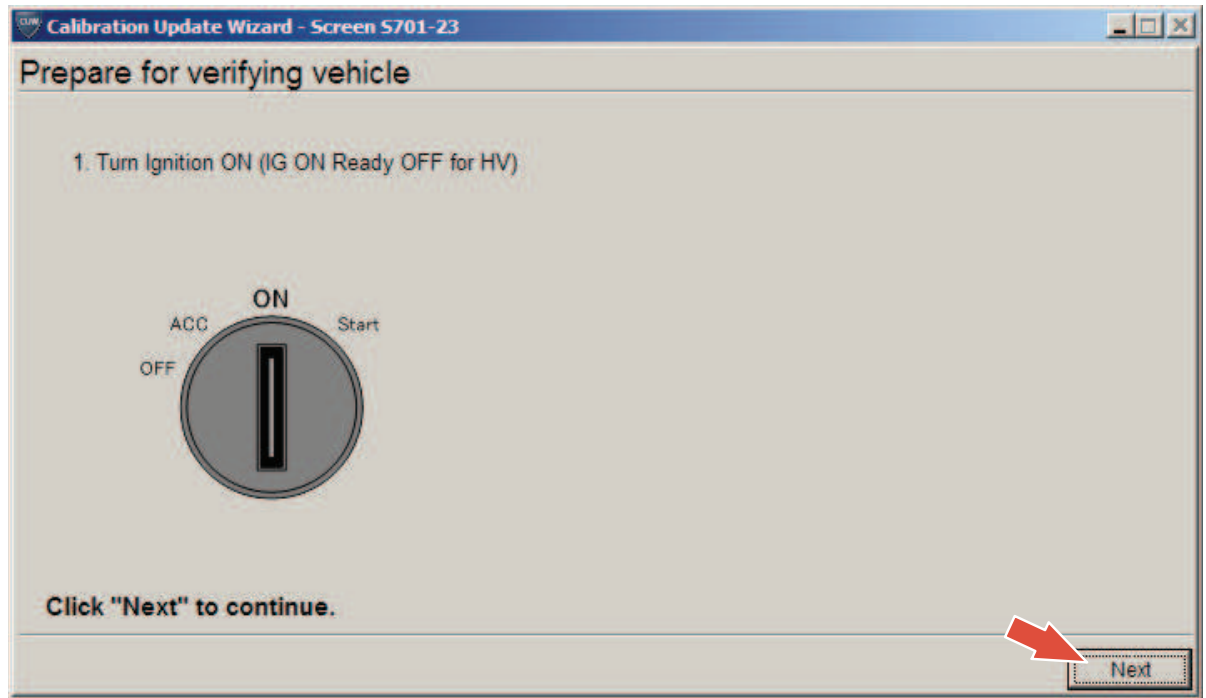
## Techstream ECU Flash Reprogramming Procedure

---

### Operation Procedure (Continued)

M. Turn ignition to the ON position. Then click *Next*.

Figure 21.

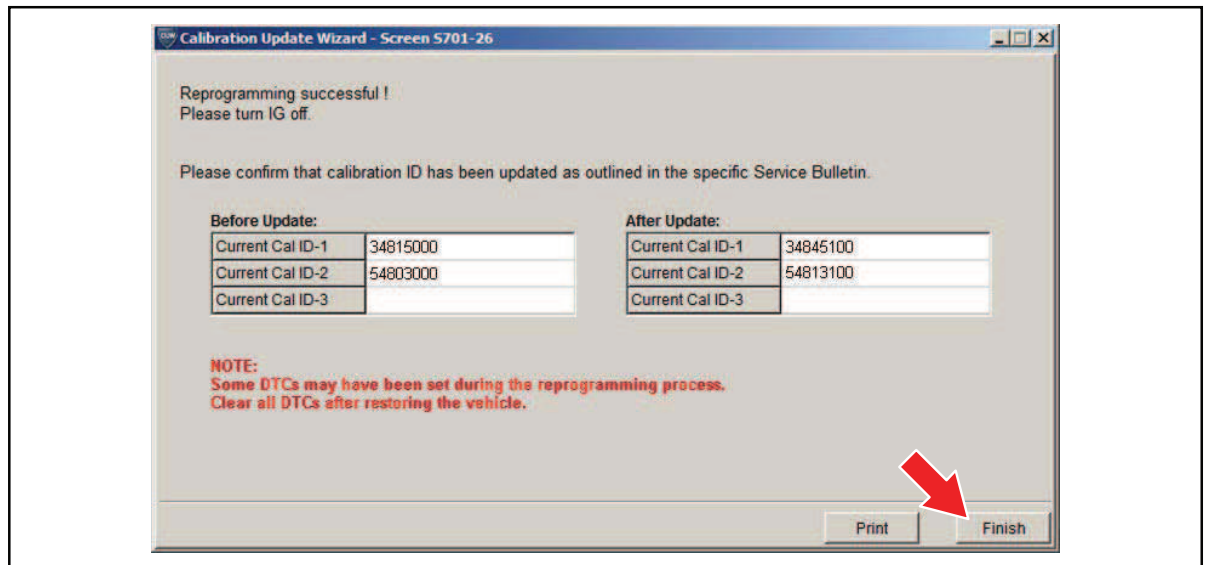


## Techstream ECU Flash Reprogramming Procedure

### Operation Procedure (Continued)

N. Confirm all calibrations were updated as specified in the Service Bulletin. Then click *Finish*.

Figure 22.



**NOTE**

On some models, DTCs may set as a result of reprogramming. If DTCs are present, clear codes and run the Health Check again. Troubleshoot any remaining Current, Pending, or History codes. Permanent codes will not be cleared using Techstream. Permanent codes do not illuminate the MIL and do not require troubleshooting. They will clear during normal driving once the Universal Trip Drive Pattern is performed.

## Techstream ECU Flash Reprogramming Procedure

### Operation Procedure (Continued)

4. Attach the Authorized Modifications Label.

A. Using a permanent marker or ball point pen, complete the Authorized Modifications Label and attach to the vehicle. The Authorized Modifications Label is available through the MDC, P/N 00451-00001-LBL.

Figure 23.

<b>TOYOTA MOTOR CORPORATION</b>	
<b>AUTHORIZED MODIFICATIONS</b>	
THE FOLLOWING MODIFICATIONS HAVE BEEN MADE:	
① →	<i>89661-48470</i>
② →	<i>34845100, 54813100</i>
THESE MODIFICATIONS HAVE BEEN APPROVED AS APPROPRIATE BY EPA AND CARB	
③ →	DEALER CODE: <i>31301</i> DATE: <i>8/2/06</i>
	CHANGE AUTHORITY: <i>TSIB EG002-05</i> ← ④
	⑤ →

<b>1</b>	<b>Replacement ECU Part Number</b>
<b>2</b>	<b>Calibration ID(s)</b>
<b>3</b>	<b>Dealer Code</b>

<b>4</b>	<b>Date Completed</b>
<b>5</b>	<b>Service Bulletin or Campaign Number</b>

B. Attach the label under the hood in the location determined by the specific Service Bulletin or Campaign.

**NOTE**  
Wait 60 – 90 seconds for ink to set before handling.