

# Lexus KDSS Bleeding Procedure

## Quick Training Guide QL413A

Introduction

Overview

Procedure #1

Procedure #2


Procedure #3

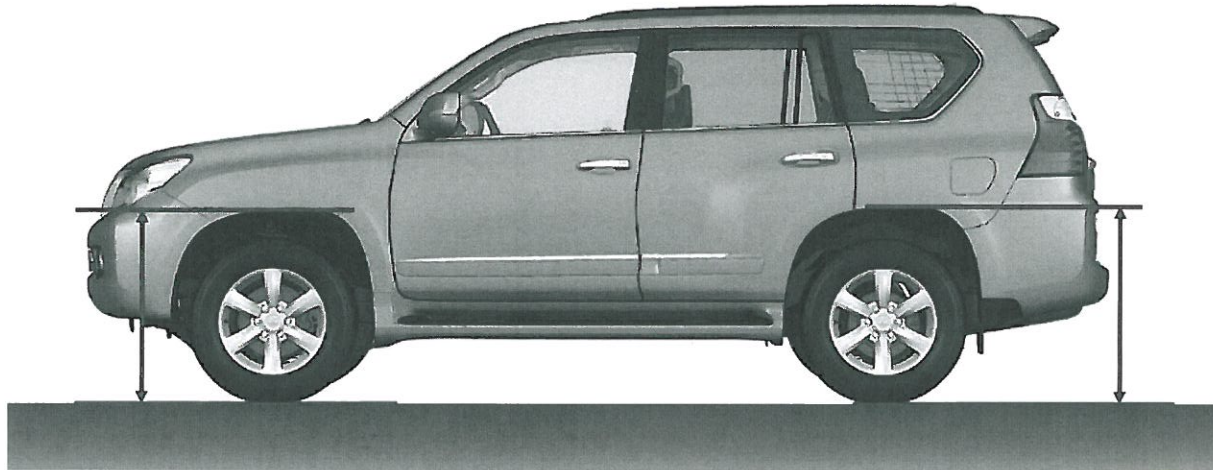
Procedure #4

Procedure #5

Procedure #6

### Procedure #6: Check/Adjust Vehicle Ride Height

 Click the tabs at the top to view each section



Verify that the difference in vehicle height between the right and left sides is within 20mm (0.76 in.).

#### Step 1. Check Vehicle Ride Height and Adjust If Needed

- a. Perform the inspection with:
  - Vehicle empty
  - Fuel tank full
  - Tires at correct pressure, facing straight ahead, on a flat surface
  - Vehicle load completely on the suspension
- b. Bounce the vehicle to stabilize the suspension.
- c. Measure the distance from the ground to the top of the wheel well arch and calculate the difference in height between the left and the right.
- d. Perform this procedure for both the front and rear wheel wells and verify that the difference in vehicle height between the right and left sides is within 20mm (0.76 in.).

- e. If the vehicle height is uneven:
  - Verify both shutter valves have been loosened 1 to 2.5 turns
  - Bounce the vehicle to equalize the pressure between the upper and lower chambers
  - Recheck the vehicle height

#### Step 2. Disconnect the SST

- a. Tighten the shutter valves, then disconnect the SST.
- b. Install the service valve cap.
- c. Inspect for fluid leaks.
- d. Install the Stabilizer Control Valve Assembly protector cover.

Front

KDSS

