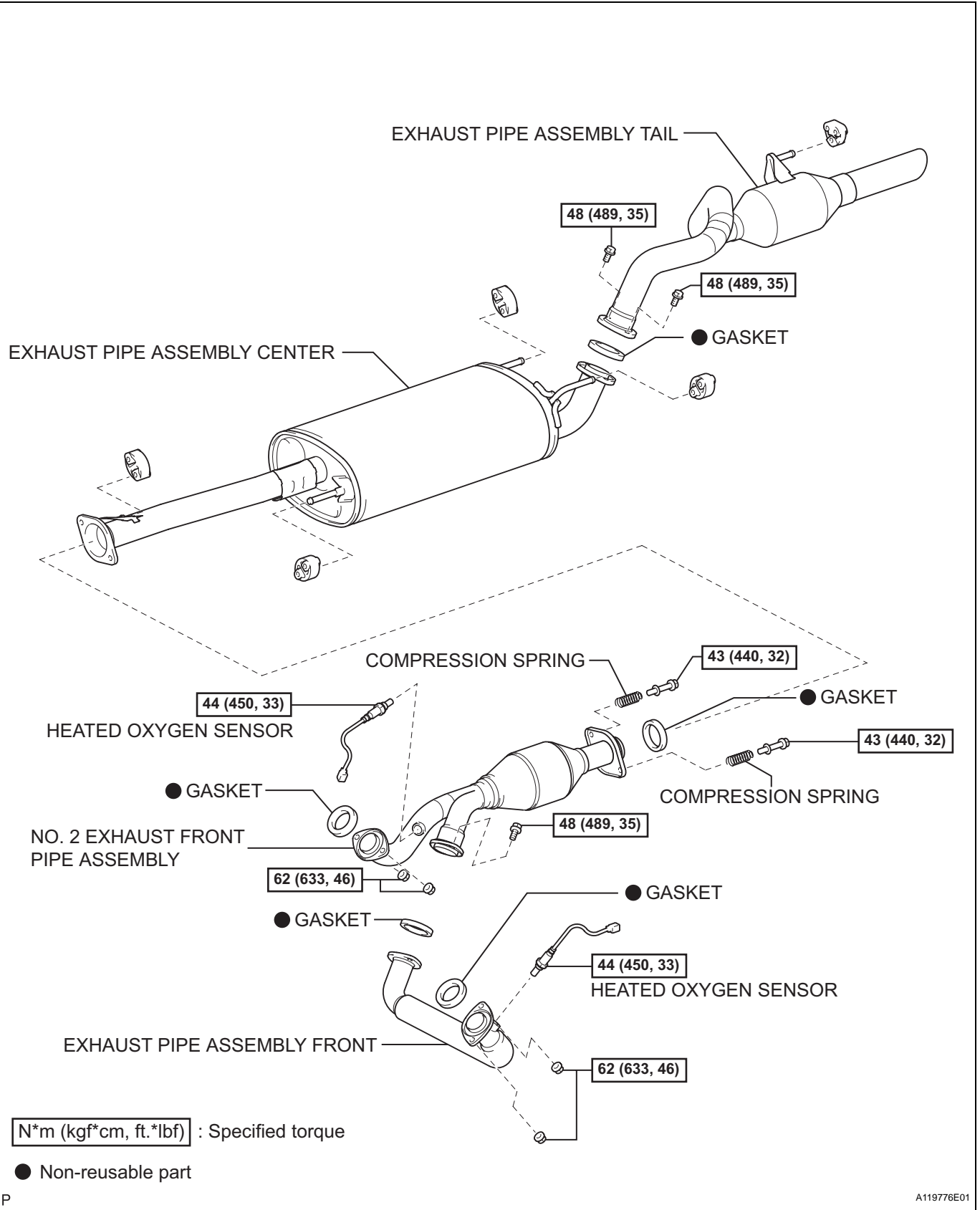
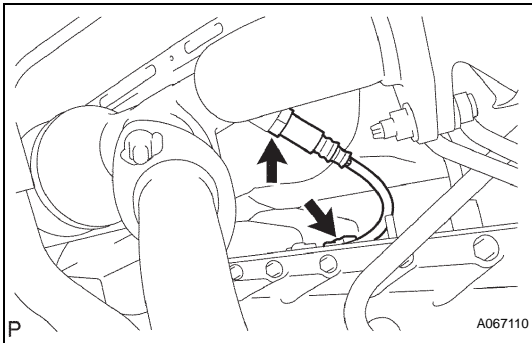
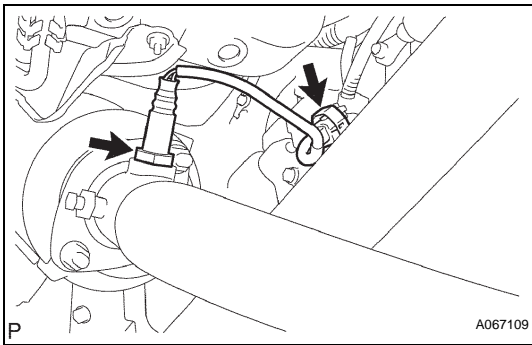


# EXHAUST PIPE COMPONENTS





## REMOVAL

1. **REMOVE HEATED OXYGEN SENSOR (for Bank 1 Sensor 2)**
  - (a) Disconnect a heated oxygen sensor connector.
  - (b) Remove the heated oxygen sensor.
2. **REMOVE HEATED OXYGEN SENSOR (for Bank 2 Sensor 2)**
  - (a) Disconnect a heated oxygen sensor connector.
  - (b) Remove the heated oxygen sensor.
3. **REMOVE EXHAUST PIPE ASSEMBLY TAIL**
  - (a) Remove the 2 bolts, exhaust pipe support and tail pipe.
4. **REMOVE EXHAUST PIPE ASSEMBLY CENTER**
  - (a) Remove the 2 bolts and 2 compression springs.
  - (b) Remove the 4 exhaust pipe supports and exhaust pipe center.
5. **REMOVE NO. 2 EXHAUST FRONT PIPE ASSEMBLY**
  - (a) Remove the 2 bolts, 2 nuts and No. 2 exhaust front pipe assembly.
6. **REMOVE EXHAUST PIPE ASSEMBLY FRONT**
  - (a) Remove the 2 nuts and exhaust pipe assembly front.