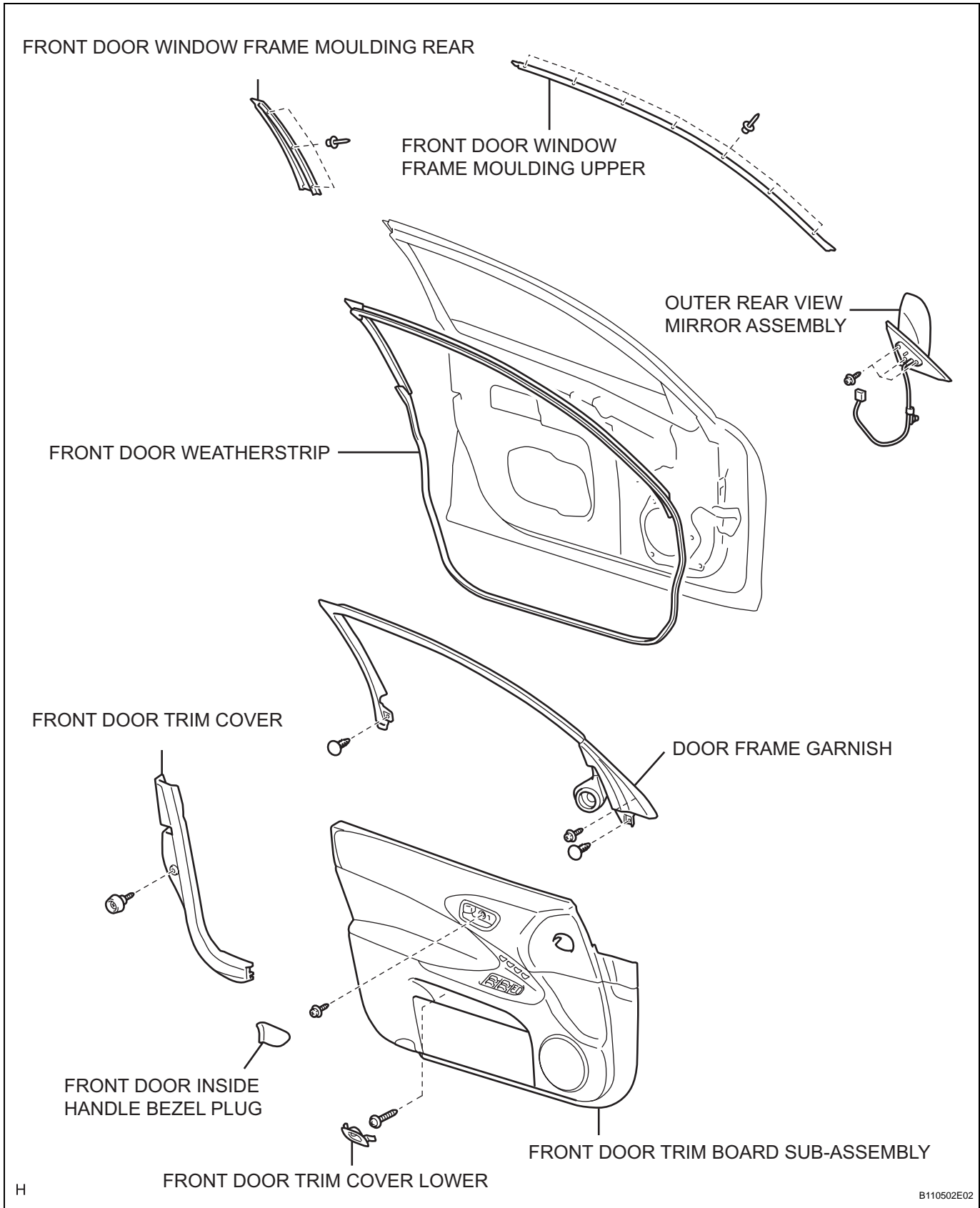


FRONT DOOR WINDOW FRAME MOULDING

COMPONENTS



ET

REMOVAL

HINT:

- Use the same procedures for the RH side and LH side.
- The procedures listed below are for the LH side.

1. REMOVE FRONT DOOR INSIDE HANDLE BEZEL PLUG (See page [ED-66](#))
2. REMOVE FRONT DOOR TRIM COVER LOWER (See page [ED-67](#))
3. REMOVE FRONT DOOR TRIM BOARD SUB-ASSEMBLY (See page [ED-67](#))
4. REMOVE FRONT DOOR TRIM COVER (See page [ED-69](#))
5. REMOVE DOOR FRAME GARNISH (See page [ED-69](#))
6. REMOVE OUTER REAR VIEW MIRROR ASSEMBLY (See page [MI-67](#))
7. REMOVE FRONT DOOR WEATHERSTRIP (See page [ED-73](#))
8. REMOVE FRONT DOOR WINDOW FRAME MOULDING UPPER

- (a) Using a drill bit with a diameter of less than 4 mm (0.16 in.), drill out the 7 rivet flanges.

CAUTION:

Be careful as the cut rivet will be very hot.

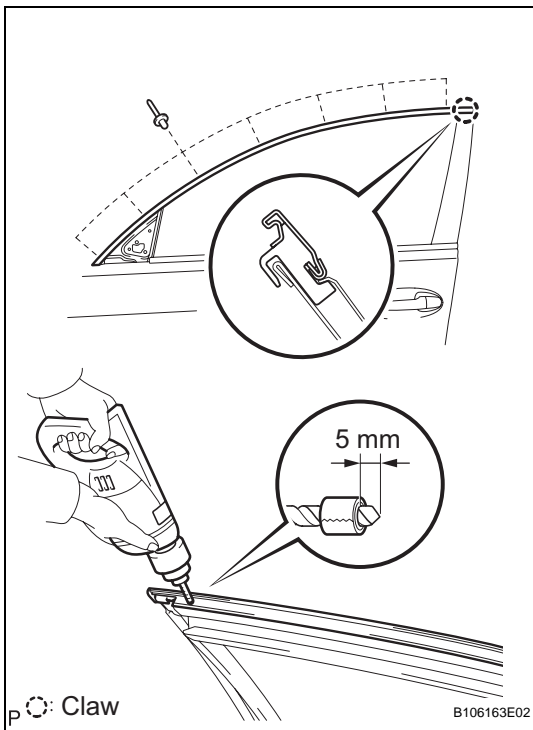
NOTICE:

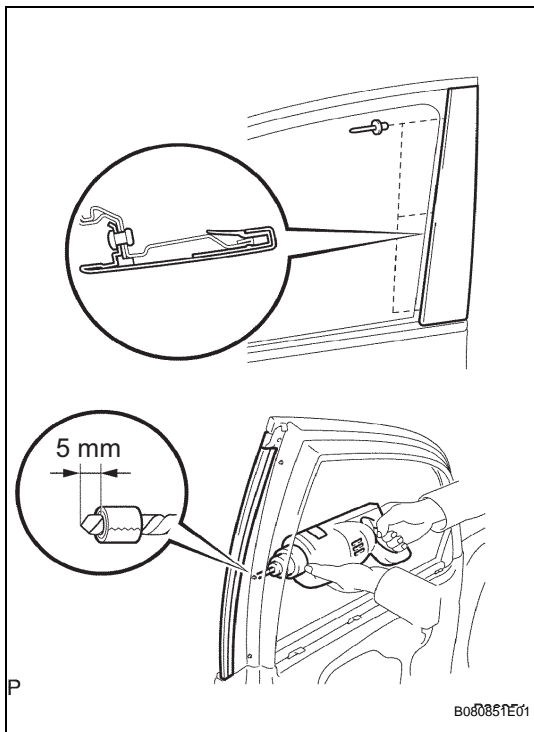
Do not drill the rivet at an angle as this will cause damage to the drill and drill hole. Line up the drill and rivet, and carefully drill out the rivet head.

HINT:

Wind tape around the drill bit approximately 5 mm (0.20 in.) from the tip of the drill bit, as shown in the illustration.

- (b) Continue drilling and push out the remaining rivet fragments using the drill.
- (c) Using a vacuum cleaner, remove the rivet fragments and shavings from the drilled areas.
- (d) Remove the front door window frame moulding from the door frame.





9. REMOVE FRONT DOOR WINDOW FRAME MOULDING REAR

- (a) Using a drill bit with a diameter of less than 4 mm (0.16 in.), drill out the 3 rivet flanges.

CAUTION:

Be careful as the cut rivet will be very hot.

NOTICE:

Do not drill the rivet at an angle as this will cause damage to the drill and drill hole. Line up the drill and rivet, and carefully drill out the rivet head.

HINT:

Wind tape around the drill bit approximately 5 mm (0.20 in.) from the tip of the drill bit, as shown in the illustration.

- (b) Continue drilling and push out the remaining rivet fragments using the drill.
- (c) Using a vacuum cleaner, remove the rivet fragments and shavings from the drilled areas.
- (d) Remove the front door window frame moulding rear from the door frame.

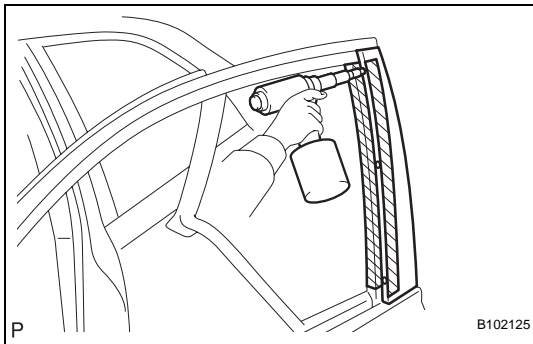
INSTALLATION

HINT:

- Use the same procedures for the RH side and LH side.
- The procedures listed below are for the LH side.

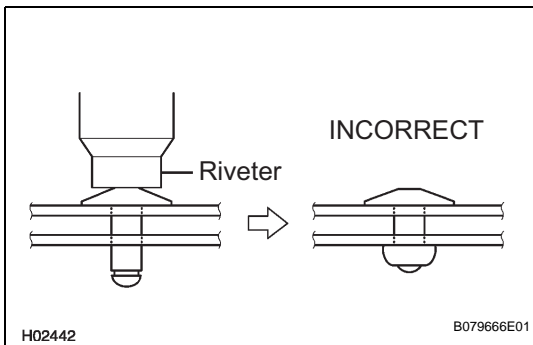
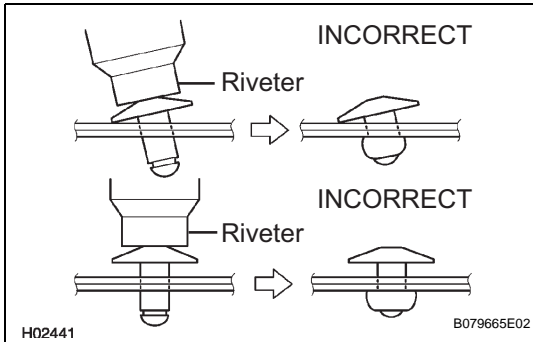
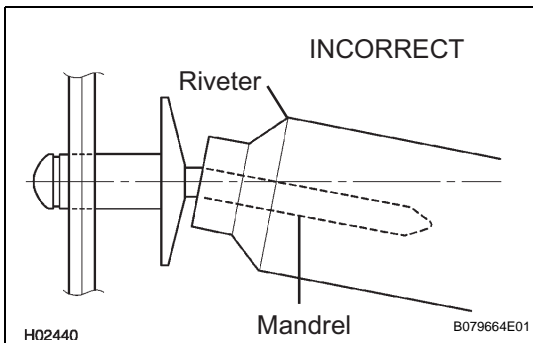
1. INSTALL FRONT DOOR WINDOW FRAME MOULDING REAR

- Put protective tape onto the door frame moulding and door frame.
- Using an air riveter or hand riveter with a nose piece, attach the door window frame moulding to the door frame.

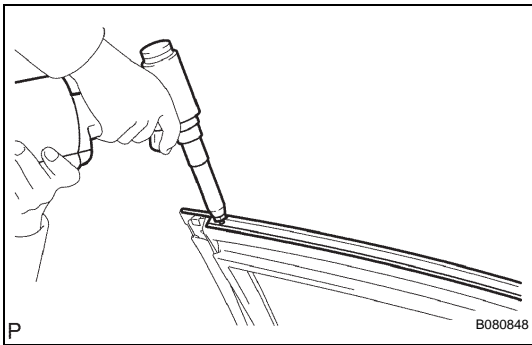


NOTICE:

- Do not pry the rivet with the riveter, as this will cause damage to the riveter and mandrel.



- Confirm that the rivets are seated properly against the moulding. Do not tilt the riveter when installing the rivet to the moulding. Do not leave any space between the rivet head and moulding.
- Do not leave any space between the moulding and door frame. Firmly hold together the 2 items while installing the rivet.

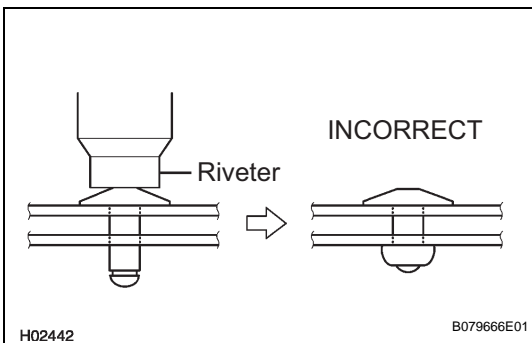
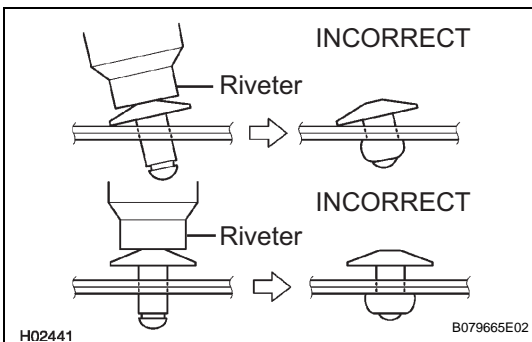
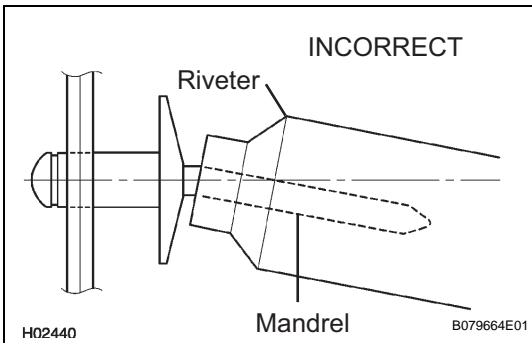


2. INSTALL FRONT DOOR WINDOW FRAME MOULDING UPPER

- (a) Using an air riveter or hand riveter with a nose piece, attach the door window frame moulding to the door frame.

NOTICE:

- Do not pry the rivet with the riveter, as this will cause damage to the riveter and mandrel.



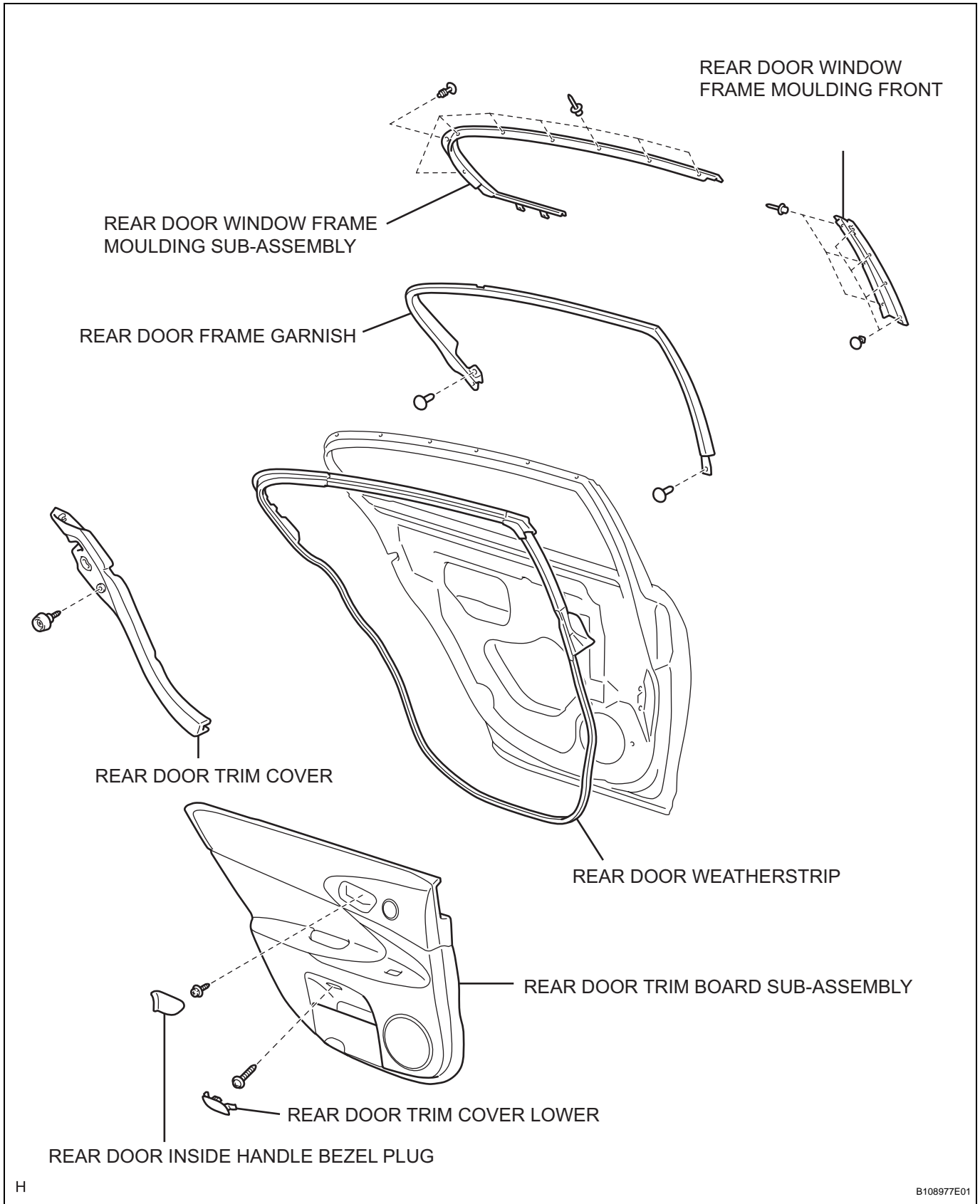
- Confirm that the rivets are seated properly against the moulding. Do not tilt the riveter when installing the rivet to the moulding. Do not leave any space between the rivet head and moulding.

- Do not leave any space between the moulding and door frame. Firmly hold together the 2 items while installing the rivet.

- INSTALL FRONT DOOR WEATHERSTRIP (See page [ED-75](#))
- INSTALL OUTER REAR VIEW MIRROR ASSEMBLY (See page [MI-76](#))
- INSTALL DOOR FRAME GARNISH (See page [ED-80](#))
- INSTALL FRONT DOOR TRIM COVER (See page [ED-80](#))
- INSTALL FRONT DOOR TRIM BOARD SUB-ASSEMBLY (See page [ED-81](#))
- INSTALL FRONT DOOR TRIM COVER LOWER (See page [ED-81](#))
- INSTALL FRONT DOOR INSIDE HANDLE BEZEL PLUG (See page [ED-82](#))

REAR DOOR WINDOW FRAME MOULDING

COMPONENTS



ET

REMOVAL

HINT:

- Use the same procedures for the RH side and LH side.
- The procedures listed below are for the LH side.

1. REMOVE REAR DOOR INSIDE HANDLE BEZEL PLUG (See page ED-86)
2. REMOVE REAR DOOR TRIM COVER LOWER (See page ED-87)
3. REMOVE REAR DOOR TRIM BOARD SUB-ASSEMBLY (See page ED-87)
4. REMOVE REAR DOOR TRIM COVER (See page ED-88)
5. REMOVE REAR DOOR FRAME GARNISH (See page ED-88)
6. REMOVE REAR DOOR WEATHERSTRIP (See page ED-92)
7. REMOVE REAR DOOR WINDOW FRAME MOULDING SUB-ASSEMBLY

- (a) Using a drill bit with a diameter of less than 4 mm (0.16 in.), drill out the 7 rivet flanges.

CAUTION:

Be careful as the cut rivet will be very hot.

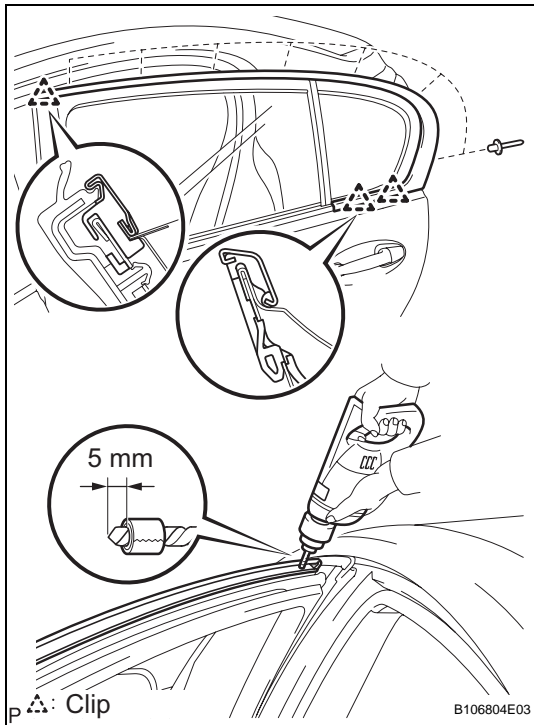
NOTICE:

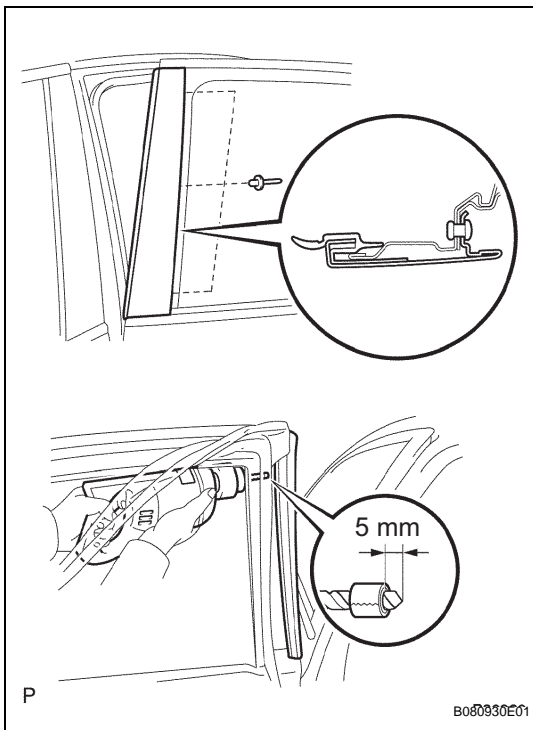
Do not drill the rivet at an angle as this will cause damage to the drill and drill hole. Line up the drill and rivet, and carefully drill out the rivet head.

HINT:

Wind tape around the drill bit approximately 5 mm (0.20 in.) from the tip of the drill bit, as shown in the illustration.

- (b) Continue drilling and push out the remaining rivet fragments using the drill.
- (c) Using a vacuum cleaner, remove the rivet fragments and shavings from the drilled areas.
- (d) Detach the 3 clips.
- (e) Remove the rear door window frame moulding from the door frame.





8. REMOVE REAR DOOR WINDOW FRAME MOULDING FRONT

- (a) Using a drill bit with a diameter of less than 4 mm (0.16 in.), drill out the 3 rivet flanges.

CAUTION:

Be careful as the cut rivet will be very hot.

NOTICE:

Do not drill the rivet at an angle as this will cause damage to the drill and drill hole. Line up the drill and rivet, and carefully drill out the rivet head.

HINT:

Wind tape around the drill bit approximately 5 mm (0.20 in.) from the tip of the drill bit, as shown in the illustration.

- (b) Continue drilling and push out the remaining rivet fragments using the drill.
- (c) Using a vacuum cleaner, remove the rivet fragments and shavings from the drilled areas.
- (d) Remove the rear door window frame moulding front from the door frame.

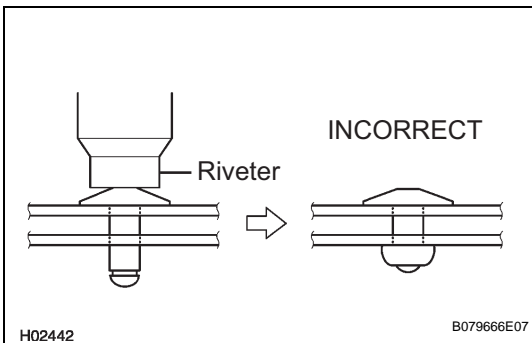
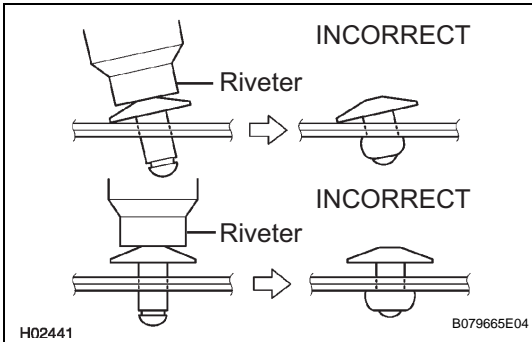
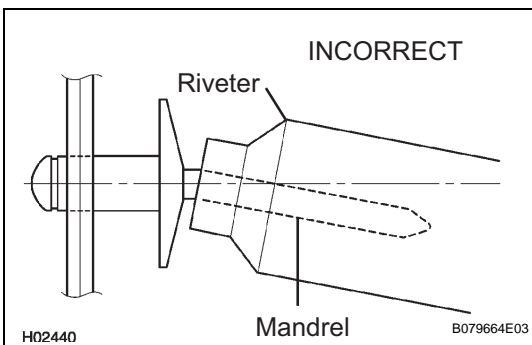
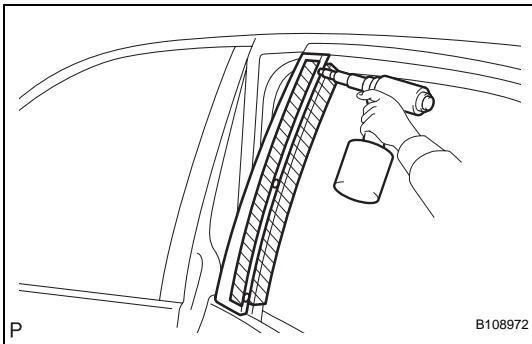
INSTALLATION

HINT:

- Use the same procedures for the RH side and LH side.
- The procedures listed below are for the LH side.

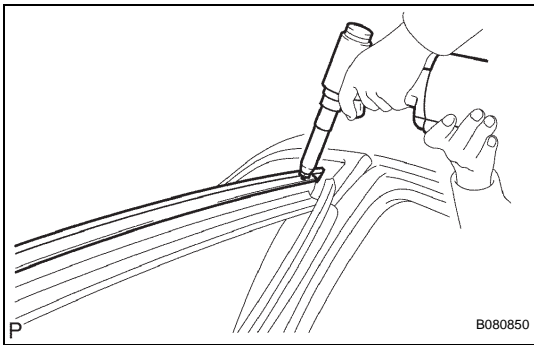
1. INSTALL REAR DOOR WINDOW FRAME MOULDING FRONT

- Put protective tape onto the door frame moulding and door frame.
- Using an air riveter or hand riveter with a nose piece, attach the door window frame moulding to the door frame.



NOTICE:

- Do not pry the rivet with the riveter, as this will cause damage to the riveter and mandrel.
- Confirm that the rivets are seated properly against the moulding. Do not tilt the riveter when installing the rivet to the moulding. Do not leave any space between the rivet head and moulding.
- Do not leave any space between the moulding and door frame. Firmly hold together the 2 items while installing the rivet.

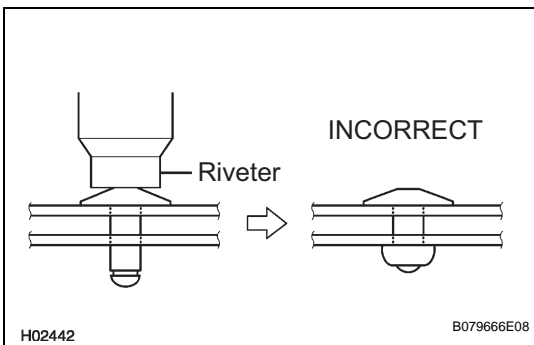
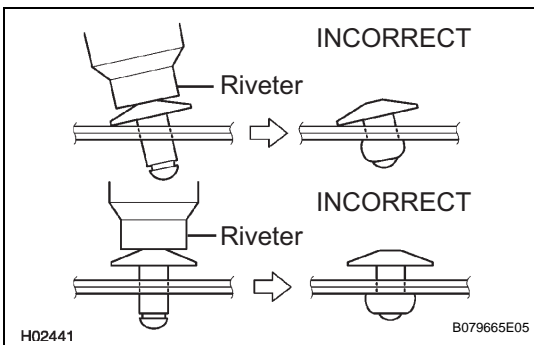
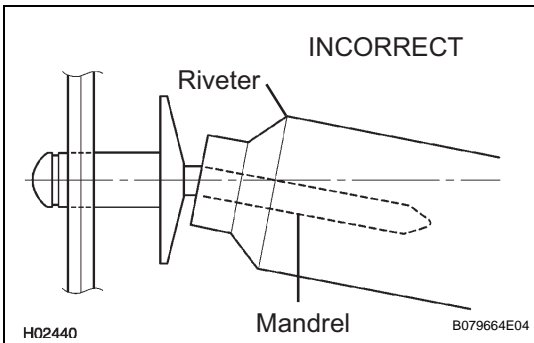


2. INSTALL REAR DOOR WINDOW FRAME MOULDING SUB-ASSEMBLY

- (a) Using an air riveter or hand riveter with a nose piece, attach the door window frame moulding to the door frame.

NOTICE:

- Do not pry the rivet with the riveter, as this will cause damage to the riveter and mandrel.



- Confirm that the rivets are seated properly against the moulding. Do not tilt the riveter when installing the rivet to the moulding. Do not leave any space between the rivet head and moulding.

- Do not leave any space between the moulding and door frame. Firmly hold together the 2 items while installing the rivet.

3. **INSTALL REAR DOOR WEATHERSTRIP (See page [ED-93](#))**
4. **INSTALL REAR DOOR FRAME GARNISH (See page [ED-97](#))**
5. **INSTALL REAR DOOR TRIM COVER (See page [ED-99](#))**
6. **INSTALL REAR DOOR TRIM BOARD SUB-ASSEMBLY (See page [ED-97](#))**
7. **INSTALL REAR DOOR TRIM COVER LOWER (See page [ED-97](#))**
8. **INSTALL REAR DOOR INSIDE HANDLE BEZEL PLUG (See page [ED-99](#))**