


Instrument Panel Rattle

Service Category Vehicle Interior

Section Interior Panels/Trim

Market USA

Lexus Supports
ASE Certification 

Applicability

YEAR(S)	MODEL(S)	ADDITIONAL INFORMATION
2006 – 2007	GS300, GS350, GS430, GS450H	

TSB SUPERSESSION NOTICE

The information contained in this TSB supersedes TSB No. NV004–06.

- Applicability has been updated to include 2007 model year vehicles.

TSB No. NV004–06 is Obsolete and any printed versions should be discarded. Be sure to review the entire content of this service bulletin before proceeding.

Introduction

Some customers may complain of rattle noises coming from the front of the instrument panel at the base of the windshield. The following procedures have been developed to improve this condition.

Production Change Information

This TSB applies to vehicles produced **BEFORE** the Production Change Effective VINs shown below.

MODEL	DRIVETRAIN	PRODUCTION CHANGE EFFECTIVE VIN
GS 300	2WD	JTHBH96S#65042835
	AWD	JTHCH96S#60019909
GS 350	2WD	JTHBE96S#70026403
	AWD	JTHCE96S#70011856
GS 430	2WD	JTHBN96S#75018088
GS 450h	2WD	JTHBC96S#75011528

Instrument Panel Rattle

Parts Information

PREVIOUS PART NUMBER	CURRENT PART NUMBER	PART NAME	QTY
55328-30160	55328-50170	Stay, Instrument Panel No. 3	1
55345-30050	55345-30060	Clip, Instrument Panel No. 1	4
55708-30100	Same	Louver Sub-assembly, Cowl Top Ventilator	1

Required Materials

TOOLS & MATERIAL	PART NUMBER	QUANTITY
Noise Kit	08231-00801	1

Warranty Information

OP CODE	DESCRIPTION	TIME	OFF	T1	T2
NV8040	R & R Instrument Panel Safety Pad Sub-assembly	2.6	55708-30100	91	43
Combo A	Insulate Instrument Panel Clips, HVAC Duct, & Defroster Nozzle	0.2			
Combo B	Insulate A-pillar Garnish	0.1			
Combo C	R & R Cowl Louver	0.3			

APPLICABLE WARRANTY

- This repair is covered under the Lexus Comprehensive Warranty. This warranty is in effect for 48 months or 50,000 miles, whichever occurs first, from the vehicle's in-service date.
- Warranty application is limited to correction of a problem based upon a customer's specific complaint.

Instrument Panel Rattle

Overview

Please refer to the following tables to determine the proper method of repair:

NOISE AREA LOCATION	REPAIR PROCEDURE
Front of Instrument Panel Area	1
A-Pillar Ribbing	2
Cowl Louver Area	3

Repair Procedures

MODEL	DRIVETRAIN	VIN RANGE	REPAIR PROCEDURE
GS 300	2WD	Up to JTHBH96S#65031639	1, 2, 3
		JTHBH96S#65031640-JTHBH96S#65041408	1, 3
		JTHBH96S#65041409-JTHBH96S#65042835	3
	AWD	Up to JTHCH96S#60016155	1, 2, 3
		JTHCH96S#60016156-JTHCH96S#60019540	1, 3
		JTHCH96S#60019541-JTHCH96S#60019909	3
GS 350	2WD	JTHBE96S#70026403	1
	AWD	JTHCE96S#70011856	1
GS 430	2WD	Up to JTHBN96S#65012836	1, 2, 3
		JTHBN96S#65012837-JTHBN96S#65015153	1, 3
		JTHBN96S#65015154-JTHBN96S#65015480	3
GS 450h	2WD	Up to JTHBC96S#75003115	3

Instrument Panel Rattle

Repair Procedure 1

1. Remove the instrument panel sub-assembly.

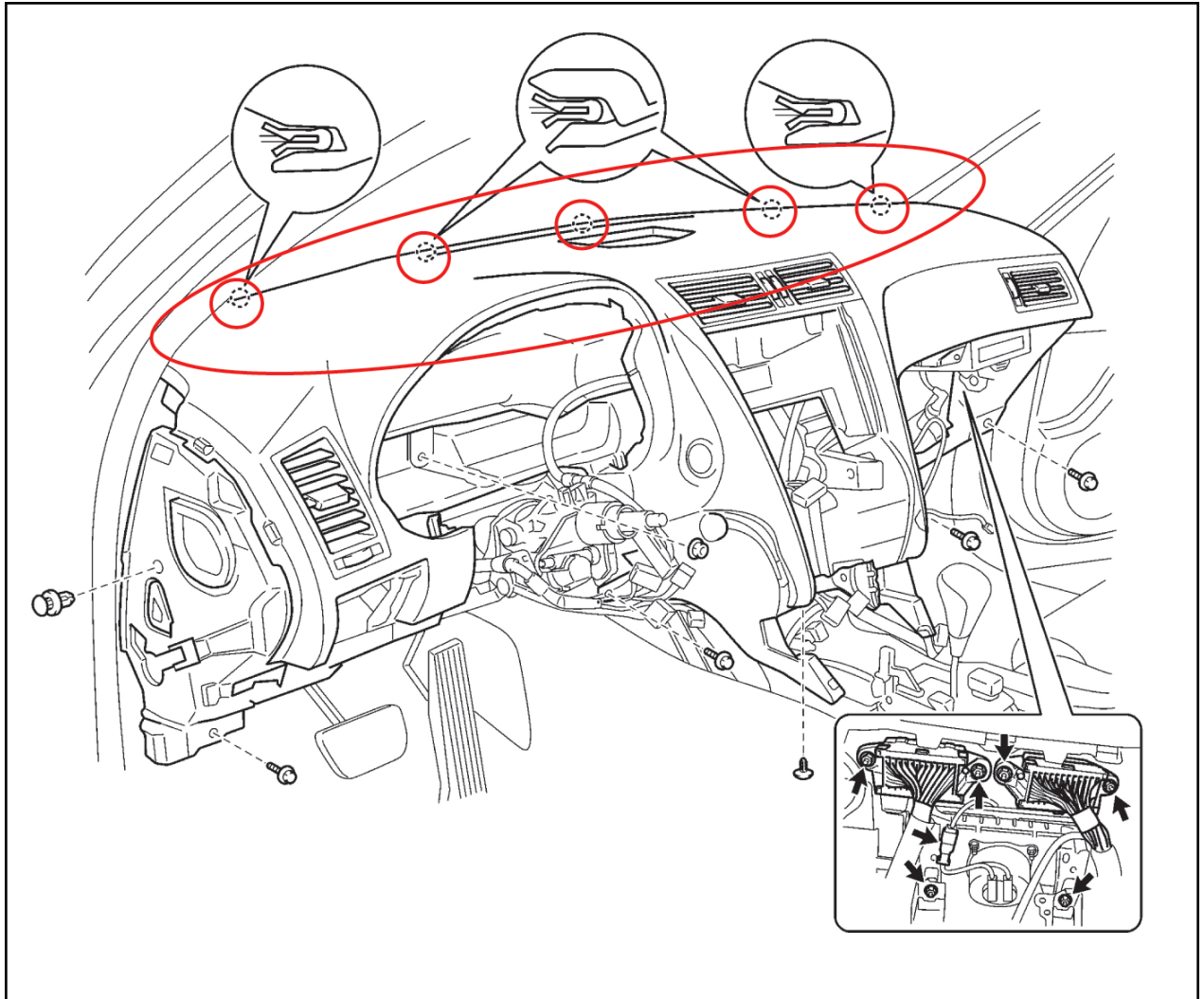
Refer to the Technical Information System (TIS), applicable model and model year Repair Manual:

- 2006 GS 300 & GS 350, [Vehicle Interior – Interior Panels/Trim – “Instrument panel safety pad: Removal”](#).
 - 2006 GS 430 & GS 450h [Vehicle Interior – Interior Panels/Trim – “Instrument panel safety pad: Removal”](#).
 - 2007 GS 300 & GS 350, [Vehicle Interior – Interior Panels/Trim – “Instrument panel safety pad: Removal”](#).
 - 2007 GS 430 & GS 450h [Vehicle Interior – Interior Panels/Trim – “Instrument panel safety pad: Removal”](#).
2. Remove the instrument panel sub-assembly to expose the instrument panel attachment clips.
 3. Remove and replace the 4 instrument panel clips and the 1 center instrument panel stay.

Instrument Panel Rattle

Repair Procedure 1 (Continued)

Figure 1.



4. Apply felt along the defroster nozzle lip as shown in Figure 2.

Felt Size:

Length: 29 cm (11.42 in.)

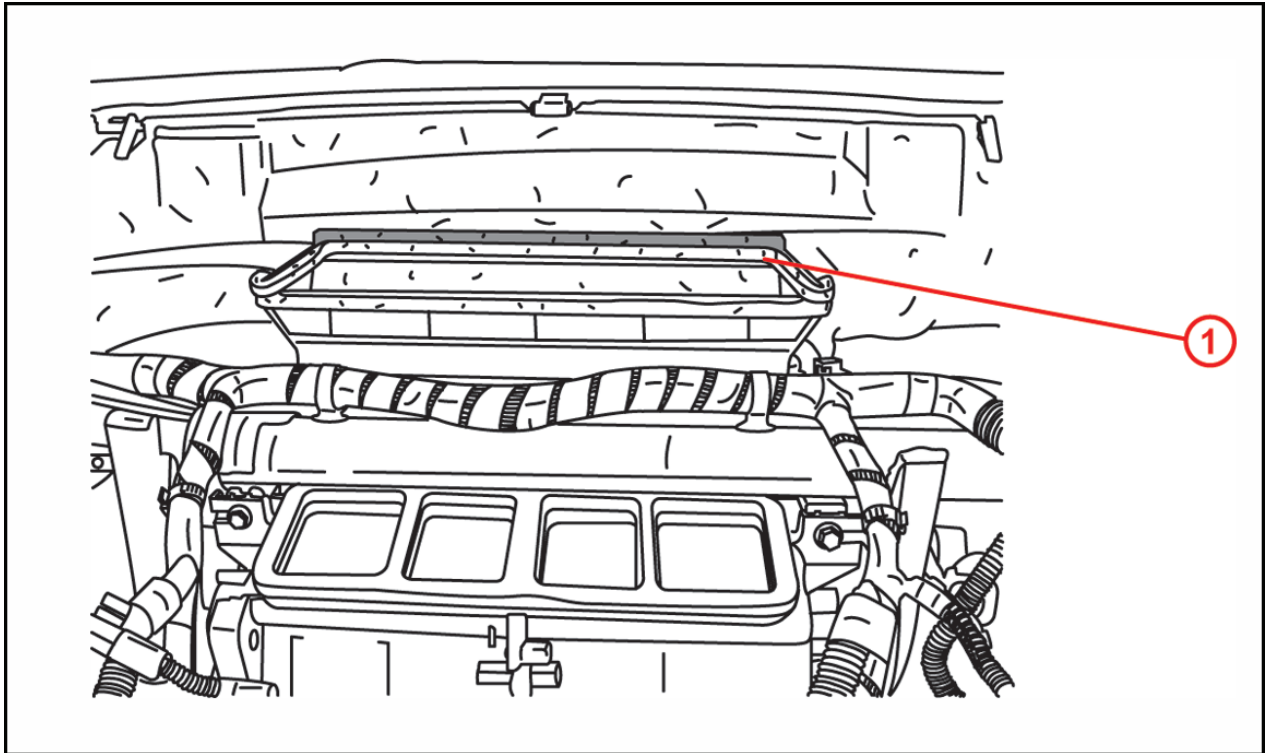
Width: 14 mm (0.55 in.)

Thickness: 0.5 mm (0.02 in.)

Instrument Panel Rattle

Repair Procedure 1 (Continued)

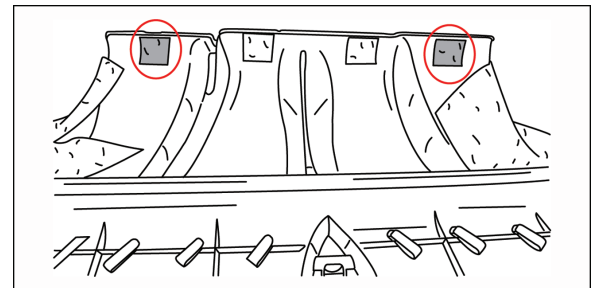
Figure 2.



1	Felt Location
----------	---------------

5. Apply foam to the instrument pad HVAC duct as shown in Figure 3.

Figure 3.



NOTE
Instrument panel pad is shown upside down.

Foam Size:
Length: 30 mm (1.18 in.)
Width: 30 mm (1.18 in.)
Thickness: 5 mm (0.20 in.)

Instrument Panel Rattle

Repair Procedure 1 (Continued)

6. If Repair Procedure 2 is NOT needed, install the instrument panel pad in reverse order of disassembly and re-initialize any affected power systems (refer to TSIB No. [PD009-06](#) "Power System Initialization During PDS" for 2006 model year vehicles. Refer to [PD009-07](#) "Power System Initialization During PDS" for 2007 model year vehicles.) Continue with Repair Procedure 3.
7. If repair Procedure 3 is NOT needed, please confirm repair.

Repair Procedure 2

1. Add felt to the "A" pillar garnish ribbing as shown in Figure 4.

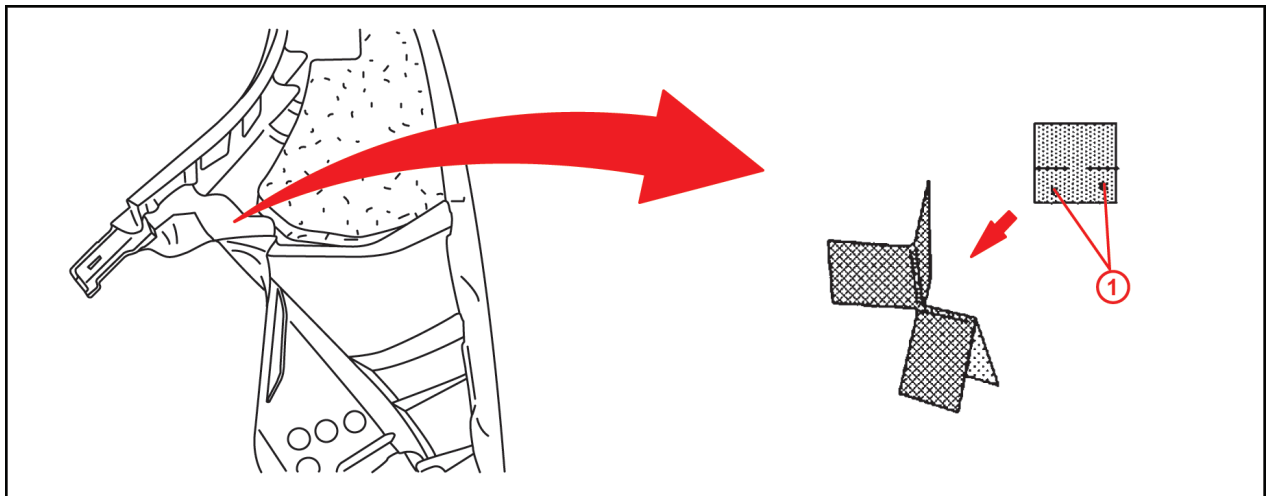
Felt Size:

Length: 10 mm (0.39 in.)

Width: 10 mm (0.39 in.)

Thickness: 0.5 mm (0.02 in.)

Figure 4.



1	Slit
----------	-------------

2. Install the instrument panel pad in reverse order of disassembly.
3. Re-initialize any affected power systems.

Refer to TSIB No. [PD009-06](#) "Power System Initialization During PDS" for 2006 model year vehicles. Refer to [PD009-07](#) "Power System Initialization During PDS" for 2007 model year vehicles.) Continue with Repair Procedure 3.

Instrument Panel Rattle

Repair Procedure 3

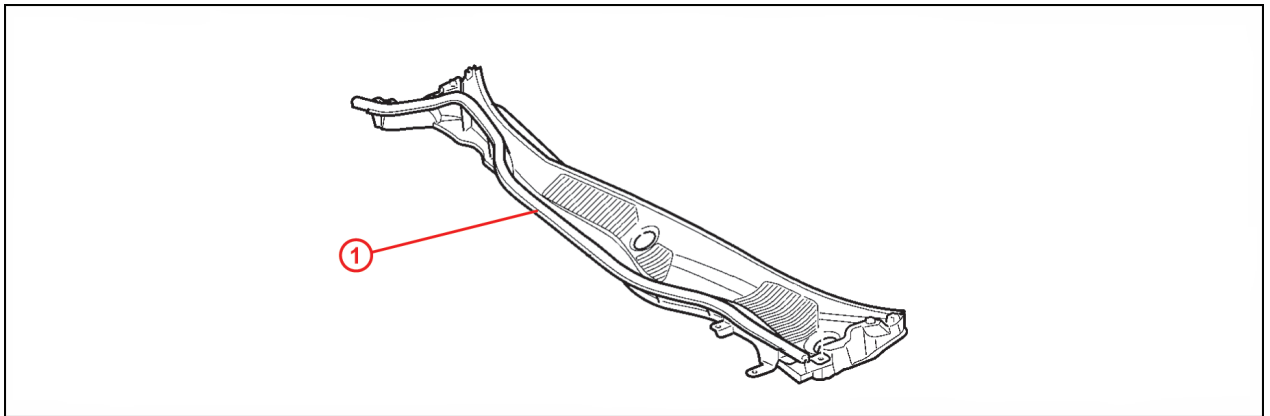
1. Remove the cowl top ventilator louver sub-assembly.

Refer to TIS, applicable model and model year Repair Manual: Wiper And Washer: Front Wiper Motor: Removal.

- 2006 GS 300 & GS 350, [Vehicle Exterior – Wiper/Washer – “Front wiper motor: Removal”](#).
- 2006 GS 430 & GS 450h [Vehicle Exterior – Wiper/Washer – “Front wiper motor: Removal”](#).
- 2007 GS 300 & GS 350, [Vehicle Exterior – Wiper/Washer – “Front wiper motor: Removal”](#).
- 2007 GS 430 & GS 450h [Vehicle Exterior – Wiper/Washer – “Front wiper motor: Removal”](#).

2. Replace the cowl louver with an updated part (P/N 55708–30100).

Figure 5.



1	Cowl Top Ventilator Louver Sub-assembly
---	---

3. Confirm repair.