

1. VOICE COMMAND SYSTEM OPERATION

1. VOICE COMMAND SYSTEM

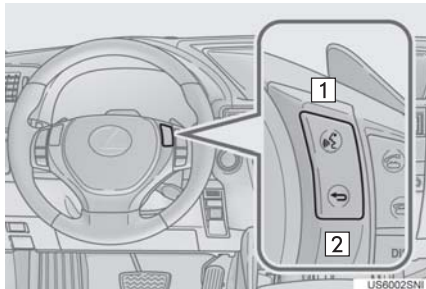
The voice command system enables the navigation, audio/video, hands-free and air conditioning systems to be operated using voice commands.

The operating procedures of voice commands from the "Shortcut Menu" screen are explained here.

INFORMATION

- Commands that are not displayed in the "Shortcut Menu" screen can be operated from the "Main Menu" screen.

STEERING SWITCHES FOR THE VOICE COMMAND SYSTEM



1 Talk switch

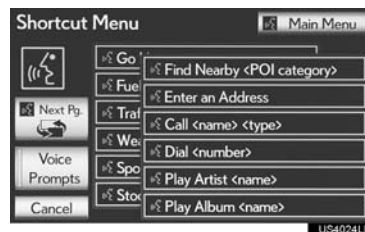
- Press the talk switch to start the voice command system.
- To cancel voice recognition, press and hold the talk switch.


2 Back switch

- Press the back switch to return to the previous screen.

VOICE COMMAND SYSTEM OPERATION

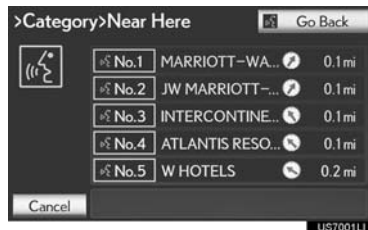
- 1 Press the talk switch.
 - After the "Shortcut Menu" screen has been displayed, voice guidance will commence.
 - Voice guidance for the voice command system can be skipped by pressing the talk switch.
- 2 After a beep sounds, say the command of your choice.



- Voice commands are marked with . Some commonly used commands are displayed on the screen.
- By saying "Next page" or "Previous page", or by selecting "Next Pg."/"Prev. Pg.", the screen will display the commands displayed on the page in the background.
- Saying "Main menu" or selecting "Main Menu" when the "Shortcut Menu" screen is displayed will display the "Main Menu" screen.
- Registered POIs, registered names in the phonebook etc., can be said in the place of the "<>" next to the commands. (See page 151.)
For example: Say "Find nearby dining", "Call John" etc.

- Saying **"Help"** prompts voice guidance to offer examples of commands and operation methods.

3 Say the command displayed on the screen.



- If a desired outcome is not shown, or if no selections are available, perform one of the following to return to the previous screen:
 - Say **"Go back"**.
 - Select **"Go Back"**.
 - Press the back switch on the steering wheel.
- To cancel voice recognition, select **"Cancel"**, or press and hold the talk switch.

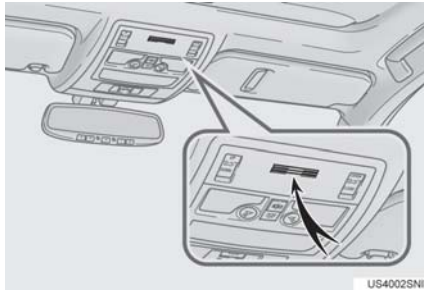
INFORMATION

- If the navigation system does not respond or the confirmation screen does not disappear, press the talk switch and try again.
- If a voice command cannot be recognized within 6 seconds, voice guidance will say "Pardon?" ("Command not recognized." will be displayed on the screen) and voice command reception will restart.
- If a voice command cannot be recognized 2 consecutive times, the voice command guidance system will say "Paused. To restart voice recognition, push the talk switch. To cancel voice recognition, push and hold the talk switch." Voice recognition will then be suspended. Select **"Cancel"** or **"Go Back"**, or press the back switch on the steering wheel.
- The voice recognition prompt can be set to on or off when **"Voice Prompts"** is selected. This setting can also be changed on the "Voice Settings" screen. (See page 61.)
- When **"Voice Prompts"** is selected, voice recognition will be temporarily suspended. Press the talk switch again.
- Voice guidance can be canceled by setting voice prompts to off. Use this setting when it is desirable to say a command immediately after pressing the talk switch and hearing a beep.
- The side display cannot be operated during voice recognition.

1. VOICE COMMAND SYSTEM OPERATION

MICROPHONE

It is unnecessary to speak directly into the microphone when giving a command.



INFORMATION

- Wait for the confirmation beep before speaking a command.
- Voice commands may not be recognized if:
 - Spoken too quickly.
 - Spoken at a low or high volume.
 - The roof or windows are open.
 - Passengers are talking while voice commands are spoken.
 - The air conditioning speed is set high.
 - The air conditioning vents are turned towards the microphone.
- In the following conditions, the system may not recognize the command properly and using voice commands may not be possible:
 - The command is incorrect or unclear. Note that certain words, accents or speech patterns may be difficult for the system to recognize.
 - There is excessive background noise, such as wind noise.

VOICE COMMAND EXAMPLE: SEARCHING FOR A ROUTE TO YOUR HOME

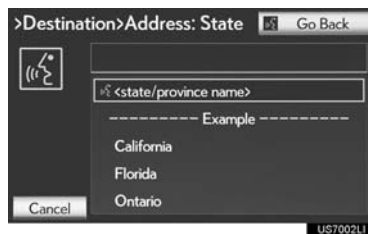
- 1 Press the talk switch.
- 2 Say "Go home".
 - A confirmation screen will be displayed showing the recognition results.
- 3 Say "Yes" or select "Yes".
 - The system starts searching for a route to your home.



- When the voice command is recognized, the map of the area around the home address will be displayed and route guidance to the home address will begin.
- If a home address is not registered, voice guidance will say "Your home is not set. Please try again after setting a home location." and you will be prompted to enter a home address. (See page 108.)

VOICE COMMAND EXAMPLE: PERFORMING A DESTINATION SEARCH BY ADDRESS

- 1 Press the talk switch.
- 2 Say **"Enter an address"**.
 - If the destination's state/province has not been set or is not contained in the voice command recognition list, the screen to input a state/province will be displayed.



- Some areas cannot be recognized by the voice recognition system.

- For information regarding the state/province setting to perform a destination search by address, see "SELECTING THE SEARCH AREA" on page 66.

- 3 Say **"<city name>"**.
 - Say the desired city name that belongs to the set state in the place of the "<".
 - Say **"Change State"** to change the set voice recognition state.

- 4 Say **"<street name>"**.

- Say the desired full street name, or main body of the street name that belongs to the set state in the place of the "<".
- The voice command recognition is designed to recognize the main body of the official street name.

For example, if the official street name is **"East Main Street"**, the voice command recognition will recognize **"Main"**.

- 5 Say **"<house number>"**.

- Say the desired number, cardinal/intercardinal direction etc. in the place of the "<".

For example: Say **"West 555"**.

- Inputting the house number can be skipped.

- 6 Say **"Start guidance"** or **"Show map"**. Alternatively, select **"Start Guidance"** or **"Show Map"**.



- After this, follow the voice guidance and search for a destination route by voice command operation.

4

VOICE COMMAND SYSTEM

INFORMATION

- Even if the state set using voice recognition is different from the set state in the "Address" screen (which was set when a destination was set manually), the set state in the "Address" screen will not change. (For more information on the "Address" screen, see "SELECTING THE SEARCH AREA" on page 66.)
- The house number voice recognition conditions are outlined below:
 - Numerals: 10 digits or less
 - Numerals and cardinal/intercardinal direction or a hyphen and numerals: A total of 9 digits or less (Do not say "and".)
 - Cardinal/Intercardinal direction or a hyphen and numerals: A total of 9 digits or less (Do not say "and".)
 - Numerals are recognized as single digits only.
 - The cardinal/intercardinal direction and hyphens are only recognized once.
 - The following cardinal/intercardinal directions can be recognized: North, East, West, South, North East, North West, South East and South West.
- When inputting the house number is skipped and the recognized candidate list has multiple entries and so forth, the full street name may need to be recognized. If this occurs, say the full street name. For example, say "East Main Street" and "East Main Street" will be recognized.

**VOICE COMMAND
EXAMPLE: SEARCH FOR A
TRACK USING ARTIST NAME
OR ALBUM NAME**

- 1 Press the talk switch.
 - "Play Artist <name>" and "Play Album <name>" are displayed in the "Shortcut Menu" screen.
 - 2 Say "Play artist <name>" or "Play album <name>".
 - Say the desired artist name or album name in the place of the "<>".
 - A confirmation screen will be displayed showing the recognition results. If multiple matching items are found, a selection screen will be displayed.
- When "Play Artist <name>" is used to play music, the first track is selected randomly. For operations beyond playing music, refer to "Owner's Manual".
- 3 Say "Yes" or select "Yes".
 - The system starts playing music.



- Music recognition technology and related data are provided by Gracenote®. Gracenote is the industry standard in music recognition technology and related content delivery. For more information visit www.gracenote.com.



INFORMATION

- A USB memory or iPod must be connected to enable track searching and playback. For details, refer to "Owner's Manual".
- When a USB memory or iPod is connected, recognition data is created so tracks can be searched using voice commands.
- Recognition data is updated under the following conditions:
 - When the USB memory or iPod data has changed.
 - When the voice recognition language is changed. (See page 53.)
- While the recognition data is being created or being updated, a track search cannot be performed using a voice command.
- While "Play Music" is displayed in the "Shortcut menu" screen, say "**Play music**" to display the music screen from which searching for a track using a voice command can be performed.
- When "Play Music" is dimmed in the "Shortcut Menu" screen, it is not possible to search for a track using a voice command. In this situation, reduce the amount of music data in the USB memory or iPod and update the recognition data to enable searching by voice command.

1. VOICE COMMAND SYSTEM OPERATION

2. NATURAL SPEECH INFORMATION (ENGLISH ONLY)

Due to natural language speech recognition technology, this system enables recognition of a command when spoken naturally. However, the system cannot recognize every variation of each command. In some situations, it is possible to omit the command for the procedure and directly state the desired operation. Not all voice commands are displayed in the short cut menu.

INFORMATION

- The "Set a Destination", "Use the Phone", "Play Music" and "Get Information" commands displayed on the "Shortcut Menu" screen can be operated using natural language speech recognition technology.
- If the command cannot be recognized completely, the command input screen will be displayed. (Search results will be shown based on the part of the command that was recognized.)

EXPRESSION EXAMPLES FOR EACH FUNCTION

Command	Expression examples
"Go Home"	<i>Let's go home. Take me home.</i>
"Enter an Address"	<i>I wanna enter an address, please. Put in an address.</i>
"Find Nearby <POI category>"	<i>Find nearby <Restaurants> for me. I need to see the nearby <Restaurants>.</i>
"Call Destination Assist"	<i>Call assistance. Assist.</i>
"Call <name> <type>"	<i>Get me <Robert Brown>. I need to call <Robert Brown> at <Work> right away.</i>
"Dial <number>"	<i>Please dial the number <3334445555>. Ring <3334445555>.</i>
"Play Artist <name>"	<i>Play the artist <XXXXX>. I'd like to hear the band <XXXXX>.*</i>
"Play Album <name>"	<i>Play album <XXXXX>. Music from album <XXXXX>.*</i>

*: Say the desired artist name or album name in the place of the "<>".

Command	Expression examples
"Traffic"	<i>How's the traffic? Check the traffic.</i>
"Weather"	<i>What's the weather like? Let's get a forecast.</i>
"Sports Scores"	<i>Team scores. How are my favorite teams doing?</i>
"Stock Quotes"	<i>Stock quotes. How are my stocks doing?</i>
"Fuel Prices"	<i>Let's check fuel prices. Find the cheapest gas prices.</i>
"Lexus Insider"	<i>Show Lexus Insider. Get me Lexus Insider.</i>

INFORMATION

- Commands that are not displayed in the "Shortcut Menu" screen can be accessed from the main menu.
- For example, to make an "International Call", say "**Main menu**" while the "Shortcut Menu" screen is being displayed. Then say "**Use the phone**" followed by saying the desired number, e.g. "**123456789**".

1. VOICE COMMAND SYSTEM OPERATION
3. EXPANDED VOICE COMMANDS

Selecting “On” next to “Expanded Voice Commands” on the “Voice Settings” screen enables voice command operation of the audio/video and air conditioning system. (See page 61.) For more information on operations that can be controlled using expanded voice commands, refer to “COMMAND LIST”. (See page 151.)

VOICE COMMAND EXAMPLE: TURN THE AUDIO SYSTEM ON

- 1 Press the talk switch.
- 2 Say “Audio on”.



INFORMATION

- Commands relating to operation of the audio/video and air conditioning systems can only be performed when the audio and air conditioning systems are turned on.
- Expanded voice commands can be recognized when the “Shortcut Menu” screen is displayed.

1. VOICE COMMAND SYSTEM OPERATION

4. COMMAND LIST

Recognizable voice commands and their actions are shown below.

- All commands are listed in the table.
- For devices that are not installed in the vehicle, the related commands will not be displayed in the "Shortcut Menu" screen. Also, according to conditions, other commands may not be displayed in the "Shortcut Menu" screen.
- The functions available may vary according to the navigation system installed.
- Voice recognition language can be changed. (See "SELECTING A LANGUAGE" on page 53.)

▶ "Set a Destination"

Command	Action	Shortcut Menu
"Find Nearby <POI category>"	Displays a list of <POI category* ¹ > near the current position.	○
"Enter an Address"	Enables setting a destination by saying the address.	○
"Go Home"	Displays the route to home.	○
"Call Destination Assist"	Connects Lexus Enform with Safety Connect response center.	—
"Destination by Phone Number"* ²	Enables setting a destination by saying the phone number.	—

*1: For example; Gas stations, Restaurants, etc.

*2: To use this function, say "**Main menu**" and then "**Set a destination**" while the "Shortcut Menu" screen is being displayed.

4

VOICE COMMAND SYSTEM

1. VOICE COMMAND SYSTEM OPERATION

► “Use the Phone” (For details, refer to “Owner’s Manual”.)

Command	Action	Shortcut Menu
“Call <name> <type>”	Calls made by saying a name from the phone-book. For example: Say “ Call John Smith ”, “ Call John Smith, mobile ” etc.	○
“Dial <number>”	Calls made by saying the phone number. For example: Say “ Dial 911 ”, “ Dial 5556667777 ” etc.	○
“International Call” ^{*1}	Calls international numbers by saying the phone number.	–

^{*1}: To use this function, say “**Main menu**” and then “**Use the phone**” while the “Shortcut Menu” screen is being displayed.

► “Play Music”

Command	Action	Shortcut Menu
“Play Artist <name>”	Plays tracks by the selected artist. For example: Say “ Play artist <XXXXX> ” ^{*1}	○
“Play Album <name>”	Plays tracks from the selected album. For example: Say “ Play album <XXXXX> ” ^{*1}	○
“Play Song <name>” ^{*2}	Plays the selected track. For example: Say “ Play song Summertime ”, “ Play song Concerto in A Major ” etc.	–
“Play Playlist <name>” ^{*2}	Plays tracks from the selected playlist. For example: Say “ Play playlist My Favorite Songs ”, “ Play Playlist Classic Hits ” etc.	–

^{*1}: Say the desired artist name or album name in the place of the “<>”.

^{*2}: To use this function, say “**Main menu**” and then “**Play music**” while the “Shortcut menu” screen is being displayed.

▶ “Get Information”

Command	Action	Shortcut Menu
“Traffic”	Displays the traffic incident list.	○
“Weather”	Displays weather information.	○
“Sports Scores”	Displays the sports list.	○
“Stock Quotes”	Displays the stocks list.	○
“Fuel Prices”	Displays the fuel prices list.	○
“Lexus Insider”	Displays the Lexus insider list.	–

▶ Select audio mode

When Expanded Voice Commands are turned “On”. (See page 150.)

Command	Action	Shortcut Menu
“Radio”	Sets the audio mode to radio.	○
“AM”	Selects the AM band.	○
“FM”	Selects the FM band.	○
“Satellite radio”	Selects the satellite radio mode.	○
“Disc”	Selects the disc audio mode.	○
“Auxiliary”	Selects the auxiliary audio mode.	○
“Bluetooth* audio”	Selects the Bluetooth [®] audio mode.	○
“iPod”	Selects the iPod audio mode.	○
“USB audio”	Selects the USB audio mode.	○
“Audio on”	Turns the audio system on.	○
“Audio off”	Turns the audio system off.	○

4

VOICE COMMAND SYSTEM

*: Bluetooth is a registered trademark of Bluetooth SIG, Inc.

1. VOICE COMMAND SYSTEM OPERATION

► Climate command

When Expanded Voice Commands are turned "On". (See page 150.)

Command	Action	Shortcut Menu
"Automatic climate control"	Turns air conditioning on and off.	○
"Warmer"	Turns temperature up.	○
"Cooler"	Turns temperature down.	○

INFORMATION

- Commands that have a "○" in the Shortcut Menu column can be recognized from the "Shortcut Menu" screen.
- Commands that have a "—" in the Shortcut Menu column can only be recognized from the screen that they are displayed in.