

ClubLexus - Lexus Forum Discussion > Lexus Model Forums > ES Models > ES - 5th Gen (2007-2012)



Username
Remember Me?
Password
[Register](#)
[Forgot Password?](#)

> **DIY: 2007-2012 Lexus ES350 fuel filter change!**

[Register](#) [FAQ](#) [Community](#) [Calendar](#) [Today's Posts](#) [Search](#) [Used Cars](#) [Vendor Directory](#) [vBLive](#)

Notices

Introducing Infinite Scroll - [Click here to learn more!](#)

ES - 5th Gen (2007-2012) Discussion topics related to 2007+ ES350

DIY: 2007-2012 Lexus ES350 fuel filter change!



Thread Tools [Search this Thread](#)

09-14-15, 01:10 PM

#1

LjeksesES
Lexus Test Driver
Thread Starter

DIY: 2007-2012 Lexus ES350 fuel filter change!

Here is the DIY how to change the fuel filter on a 07-12 Lexus ES350. The fuel filter is located in the fuel tank.

1. Pull of the rear seat bench and remove it from the car.
2. There you will find this. Pop up the black rubber:



Join Date: Jun 2014
Location: Lex
Posts: 919
[Thanks: 10](#)
Thanked 45 Times in 44 Posts

[Reply](#) [Share](#)

[Forum Jump](#)



2. Take a steel knife and try to separate the cover which is glued with silicone:



3. Under the cover there is a plug. Remove it by pressing the clip:



Now start the engine and let it run until it dies.

4. Now you need to remove the hose. First you need to slide the yellow clip and remove it completely:



5. Put a towel over the hole, grab the hose and pull it up:



Because of the fuel pressure, some fuel may pour but the towel will "drink" it:



6. Remove the towel and you'll see this:



7. Now, with a 8mm socket remove all the bolts (8 of them):



8. Pull the whole unit. Look for the fuel sender, it's on the right:



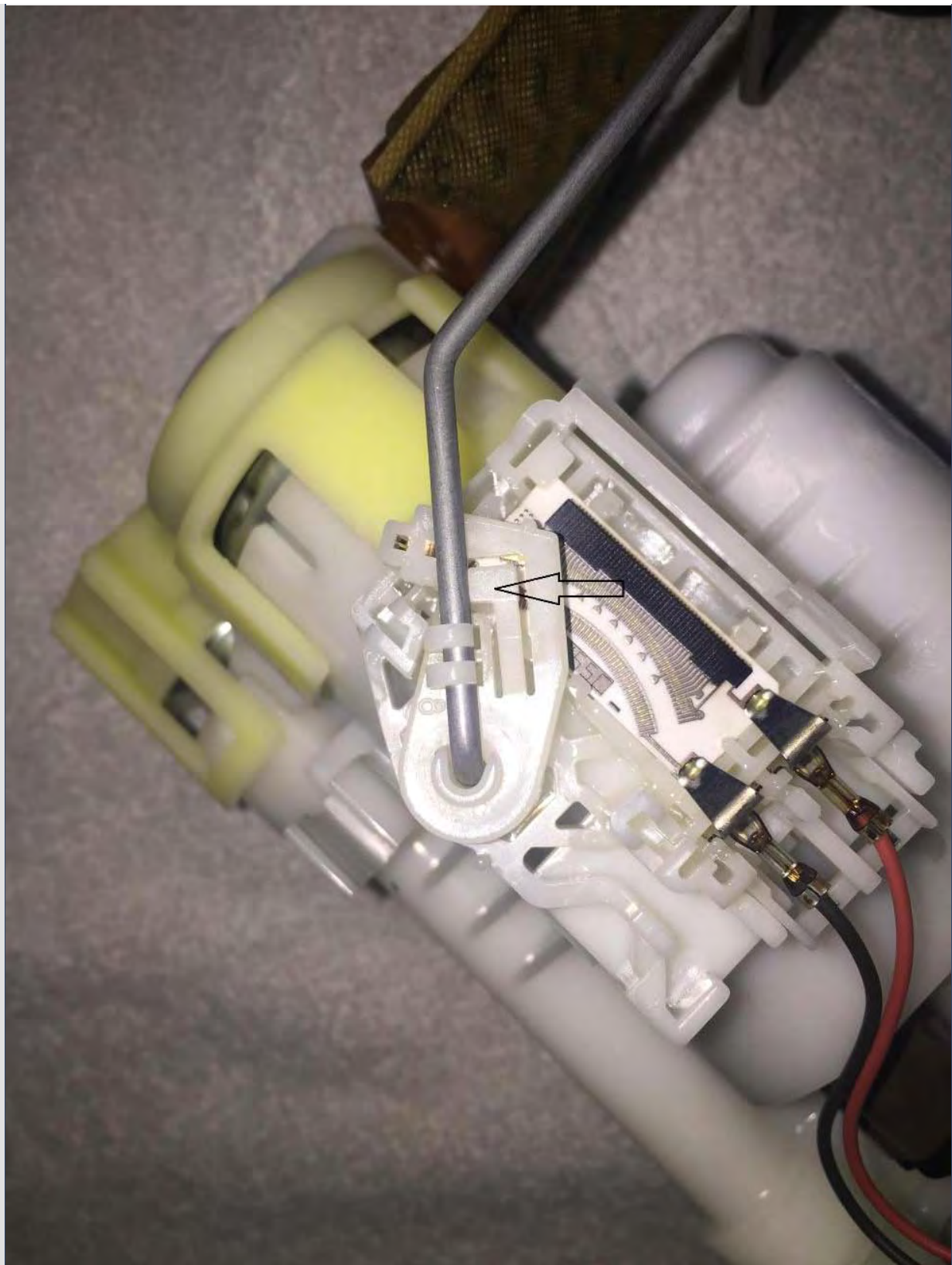
9. This is where the unit goes. It's so clean because it's surrounded by plastic walls and the dirt and water cannot get in there:



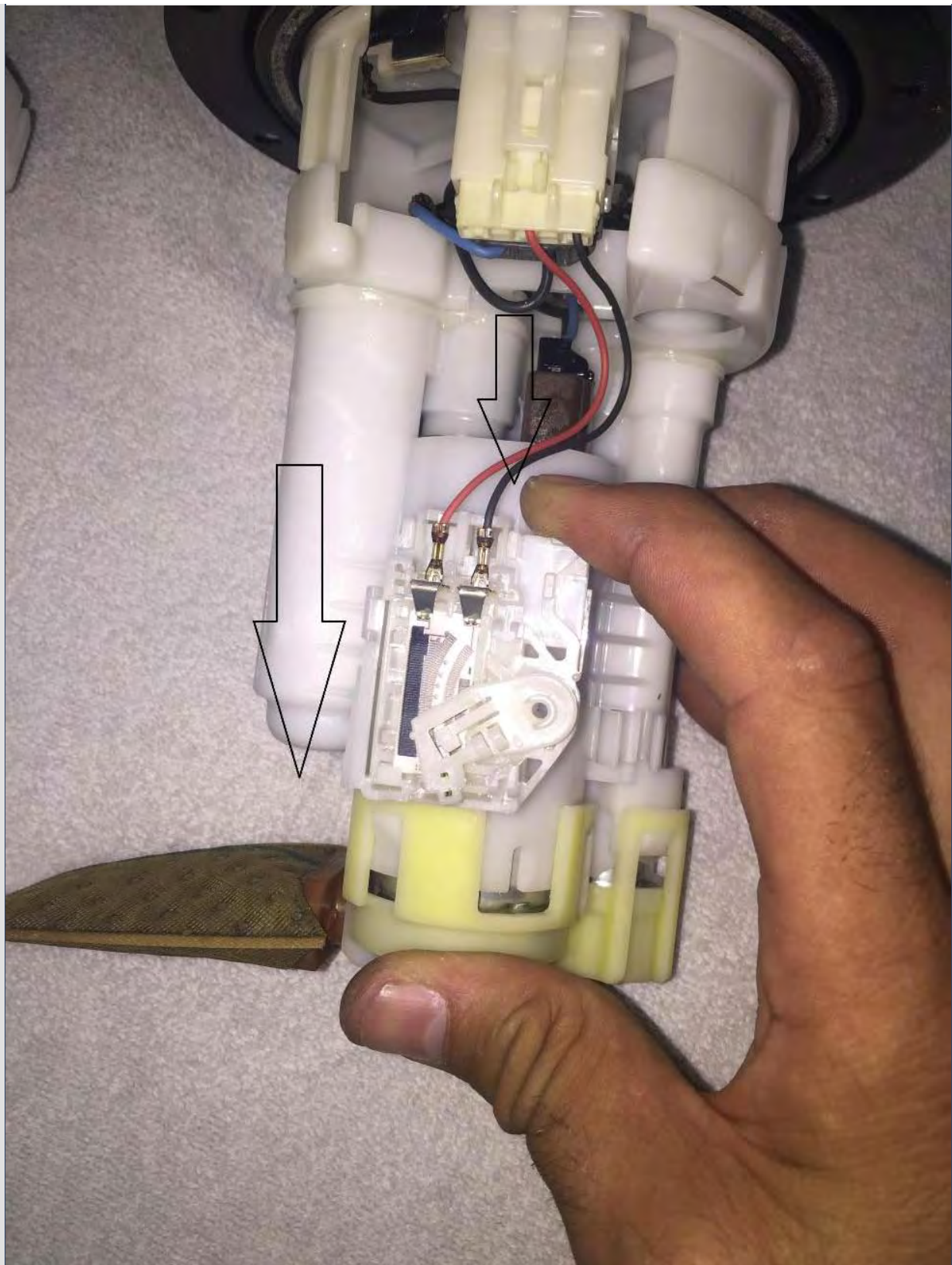
10. This is the unit:

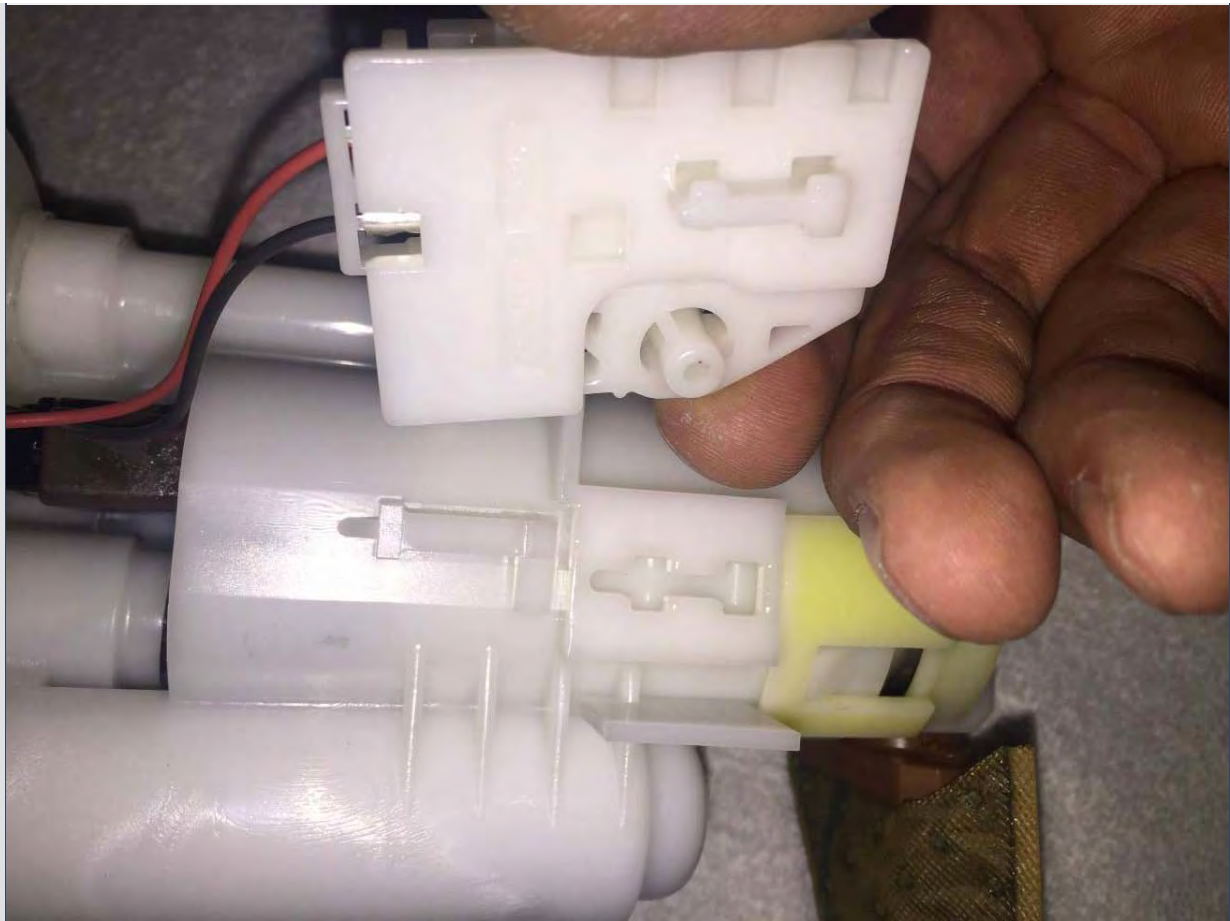


11. This is the fuel level sender or FLS. You need to remove the metal thing. Press on the white clip, turn the metal thing clockwise and pull:



12. Now, you have to remove the FLS. Just press it down:





13. This plastic holds the pump. Remove it, start with this holder:





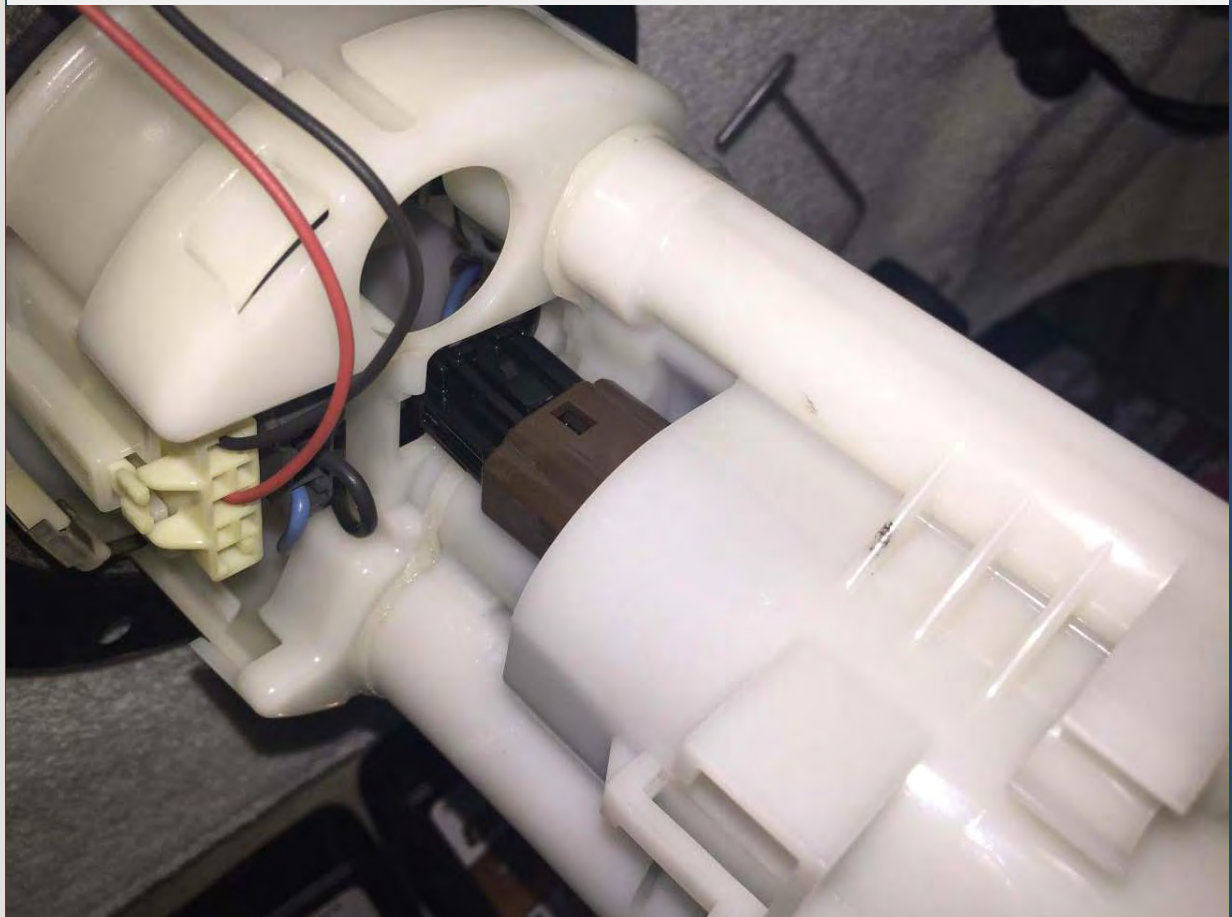
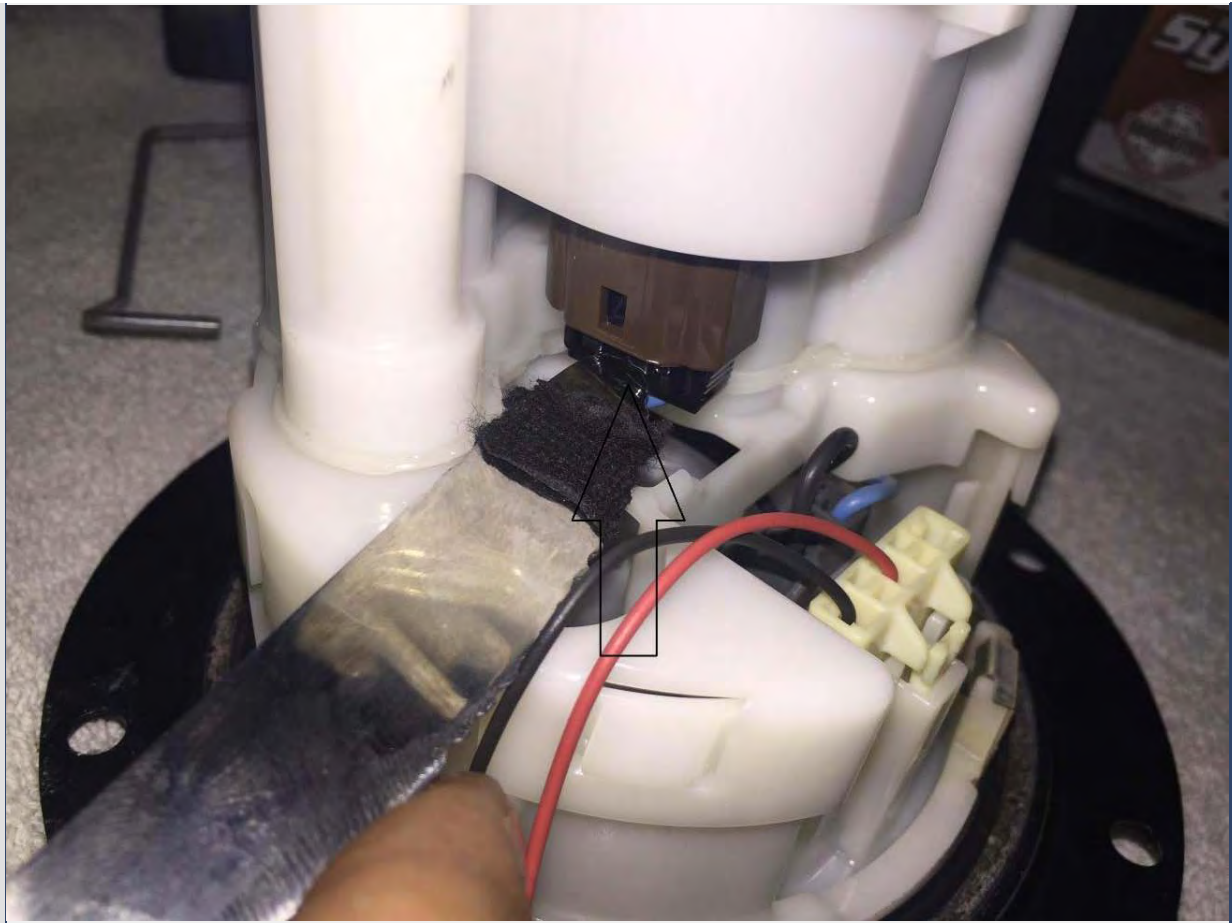
14. Remove this piece of rubber and underneath it you will see the fuse that holds the FUEL STRAINER:



15. Take the knife and remove it:



16. Remove the fuel pump connector, press the clip and separate it from the plug:



17. Remove the pump. Just pull:



18. The pump and the gasket:



19. Remove the strainer:



New vs. old:



Last edited by LjeksesES; 10-04-15 at 05:38 AM.



2

09-14-15, 01:11 PM

LjeksesES
Lexus Test Driver
Thread Starter

20. Remove the fuel pressure regulator, just pull:



Join Date: Jun 2014
Location: Lex
Posts: 919
Thanks: 10
Thanked 45 Times in 44
Posts



21. Separation:





New vs. old:



22. Take the FPR gasket from the old filter and put it on the new one:



Press it down with the screwdriver:



23. Now, the marriage. Align all the holders and press it down. Before you press it down, you have to make sure the fuel pump wires are placed on the right place:





24. Put the FPR back in, just press it:



25. Put the strainer on the right place and press it hard down:



26. Put the strainer fuse and press it:

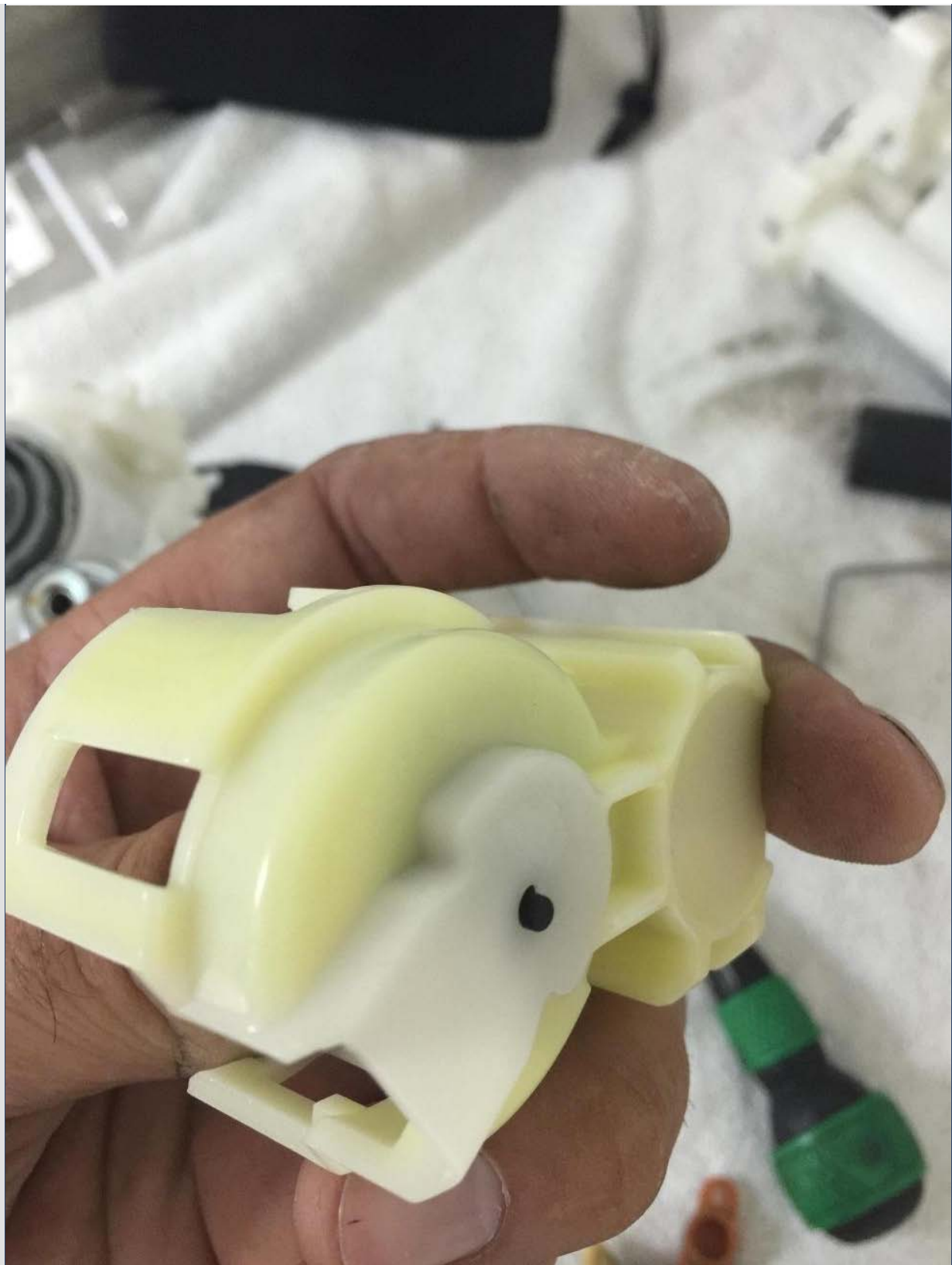


27. Now, the pump. Align it with the wires, plug the connector and press it down:

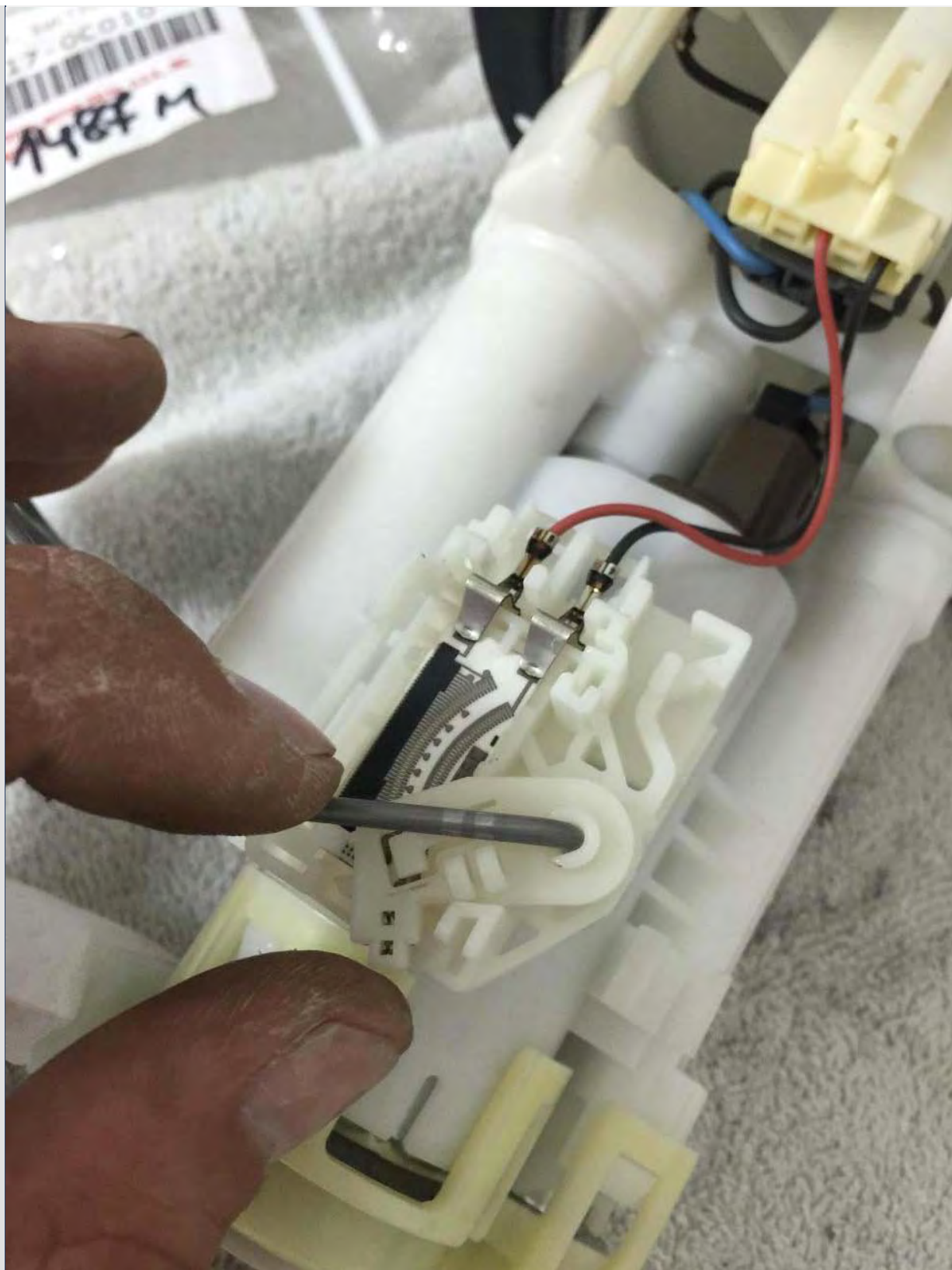


28. Put the rubber thing in the holder and put them back:

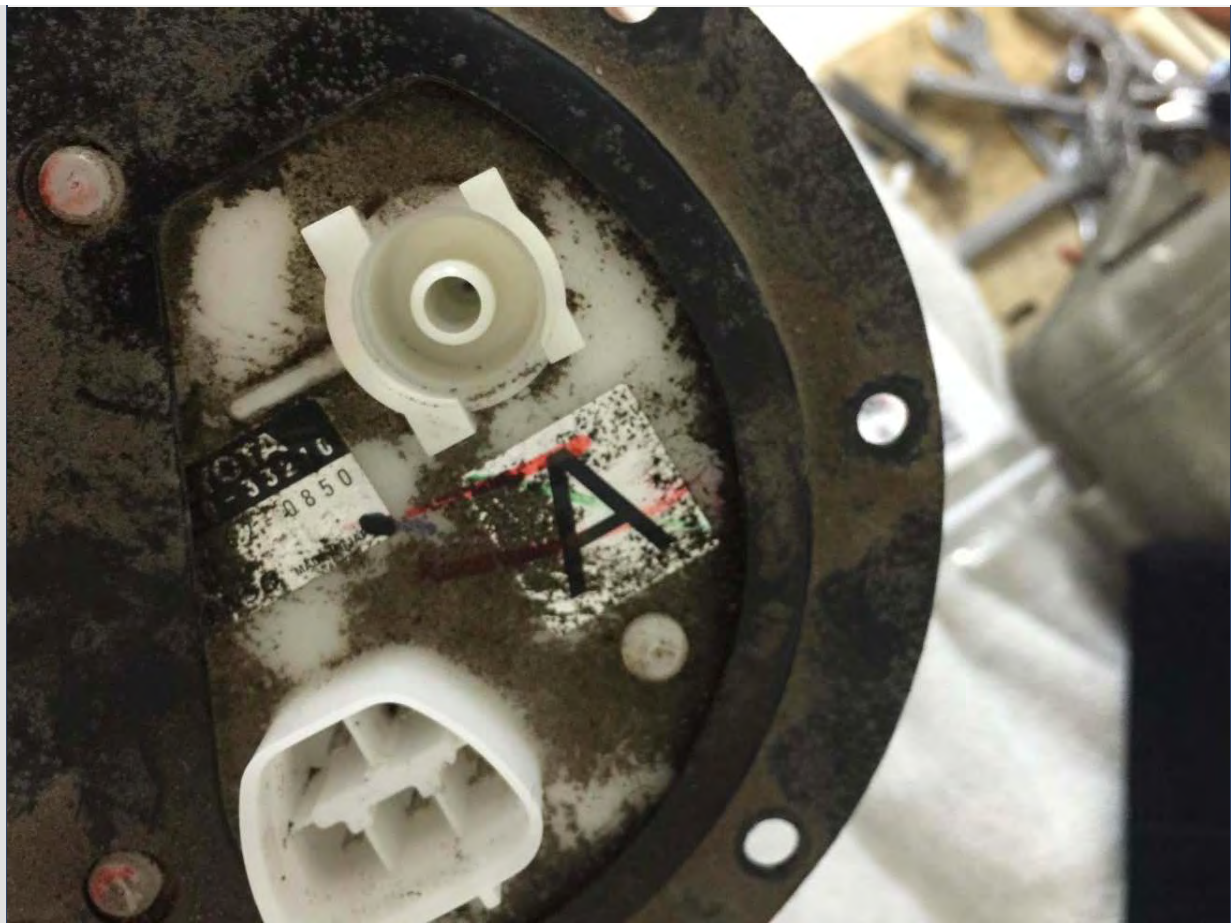




29. Put the metal thing in the hole and turn it anti clockwise:



30. Clean the place where the hose goes, clean it with Q-tips:



31. Put it back in the tank, return all 8 bolts, put the hose, the fuse and the connector:





32. Cover the hole with a towel and start the engine. It will crank much longer than normal and it will run rough until it builds up the fuel pressure:



While it runs take a look at the towel, just in case if there's fuel leak.

Put the cover back, press it hard, put the rubber, the seat bench and call it a day.

33. This is how the filter look like:



34. Part numbers:



Last edited by LjeksesES; 09-15-15 at 03:37 PM.



Quote

09-14-15, 08:27 PM

3

nevernu
Lead Lap



great write up, why did you do this, was it running rough or...?

Join Date: Jan 2011
Location: Ontario, Canada
Posts: 696
Thanks: 10
Thanked 37 Times in 32 Posts



Quote

09-15-15, 01:21 AM

4

LjeksesES
Lexus Test Driver
Thread Starter



No, everything was OK with the car. The filter is small and I think 65000 miles is really enough on original filter.

Join Date: Jun 2014
Location: Lex
Posts: 919
Thanks: 10

Thanked 45 Times in 44 Posts



09-16-15, 11:05 AM

#5

TLPLEXUS
Rookie



Join Date: Aug 2008
Location: CA
Posts: 90
Thanks: 1
Thanked 0 Times in 0 Posts



First off, this is a great tutorial on how to do this from start to finish. Thank you very much for putting this together. Believe it or not, my car has over 150,000 miles and i don't think i have done that ever.

Quick validation question, is the fuel pump part of the same assembly? I am assuming that if my fuel pump ever goes out, i can follow your step to change it. But either case, it is a good idea to swap out the fuel filter since there is a finite life on it.

How long did it take you to do this from start to finish?

Quote:

Originally Posted by **LjeksesES**

No, everything was OK with the car. The filter is small and I think 65000 miles is really enough on original filter.



09-16-15, 02:00 PM

#6

LjeksesES
Lexus Test Driver
Thread Starter



Join Date: Jun 2014
Location: Lex
Posts: 919
Thanks: 10
Thanked 45 Times in 44 Posts



Yes, you can use this tutorial to replace the pump since it is part od the unit. I would change the filter ASAP. 150000 is too much on factory filter, because it is too small.

I think it took me about 1 hour 30 minutes, but I lost so much time taking pictures.



09-21-15, 08:37 PM

#7

jfall
Driver School Candidate

Join Date: Jun 2015
Location: tx



Quote:

Originally Posted by **LjeksesES**

Yes, you can use this tutorial to replace the pump since it is part od the unit.

Posts: 12
Thanks: 0
Thanked 0 Times in 0 Posts

I would change the filter ASAP. 150000 is too much on factory filter, because it is too small.

I think it took me about 1 hour 30 minutes, but I lost so much time taking pictures.

Thank you very much for taking your time to do the write up and do such a great job of documenting it!

How much trouble was removing the rear bench? Once it was put back did it feel 'the same'?


Thanks again!



09-22-15, 12:51 AM

#8

LjeksesES
Lexus Test Driver
Thread Starter



Join Date: Jun 2014
Location: Lex
Posts: 919
Thanks: 10
Thanked 45 Times in 44 Posts

Quote:

Originally Posted by **jfall**

Thank you very much for taking your time to do the write up and do such a great job of documenting it!

How much trouble was removing the rear bench? Once it was put back did it feel 'the same'?

Thanks again!

No problem at all. It feels the same.



12-30-16, 12:41 PM

#9

kinny
Driver School Candidate

Join Date: Jan 2015
Location: TEXAS
Posts: 4
Thanks: 1
Thanked 0 Times in 0 Posts

Thank You so much for this detailed work. It's invaluable to amateurs like me. So much money will be saved from the stealerships. Your effort is not wasted.

Last edited by kinny; 12-30-16 at 12:43 PM. Reason: addition



« Previous Thread | Next Thread »



The Haynes logo, which consists of a red shield with a white border and the word "Haynes" in white, is positioned at the top left. To its right, the word "Haynes" is written in a large, bold, black font, with the tagline "shows you how" in a smaller font below it. Below the logo and text, the text "Auto repairs made easy. Print and online manuals" is displayed in a large, black font. At the bottom, there are images of several Haynes repair manuals, including one for "Ford Escort & Mercury Tracer" and another for "TOYOTA MATRIX PONTIAC VIBE". A search bar with the text "Search N" is overlaid on the manuals.

An advertisement for Tire Rack. It features two silver alloy wheels on the left. To the right, the "TIRE RACK" logo is displayed in a bold, black font, with the tagline "UPGRADE GARAGE" in a smaller font below it. A red button with the text "Shop Now" is located at the bottom right of the advertisement.

[Contact Us](#) [Archive](#) [Advertising](#) [Cookie Policy](#)
[Privacy Statement](#) [Terms of Service](#)



We are a participant in the Amazon Services LLC Associates Program, an affiliate advertising program designed to provide a means for us to earn fees by linking to Amazon.com and affiliated sites.

All times are GMT -7. The time now is 10:03 PM.

-- Classic Next Gen 3.0

[Contact Us](#) - [Archive](#) - [Advertising](#) - [Cookie Policy](#) - [Privacy Statement](#) - [Terms of Service](#) - [Top](#)

Copyright © 2000-2017 Internet Brands, Inc. All Rights Reserved