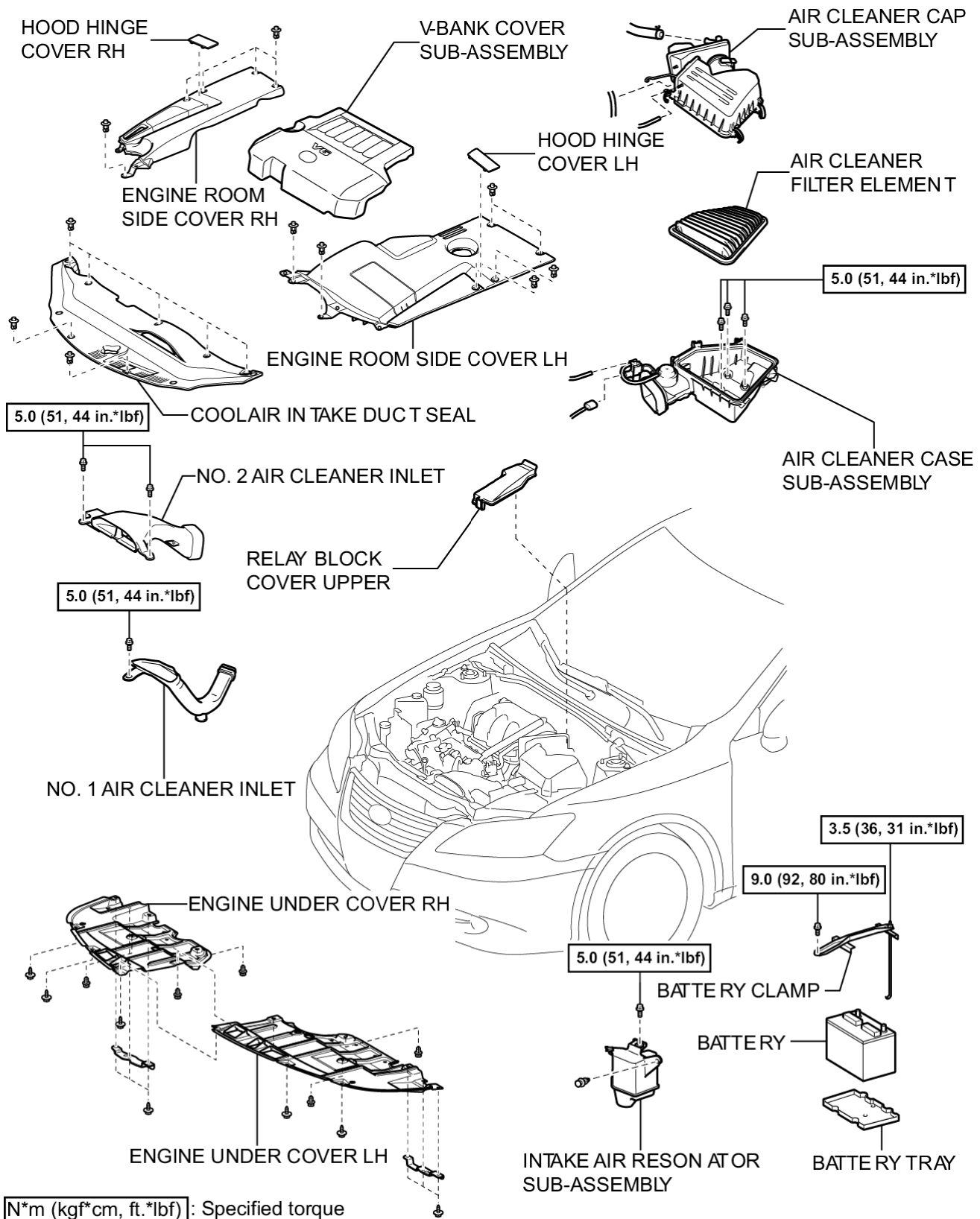


<b>Last Modified:</b> 7-13-2007		1.6 K
<b>Service Category:</b> Engine/Hybrid System	<b>Section:</b> Engine Mechanical	
<b>Model Year:</b> 2008	<b>Model:</b> ES350	<b>Doc ID:</b> RM0000021ZS00HX
<b>Title:</b> 2GR-FE ENGINE MECHANICAL: ENGINE ASSEMBLY: COMPONENTS (2008 ES350)		

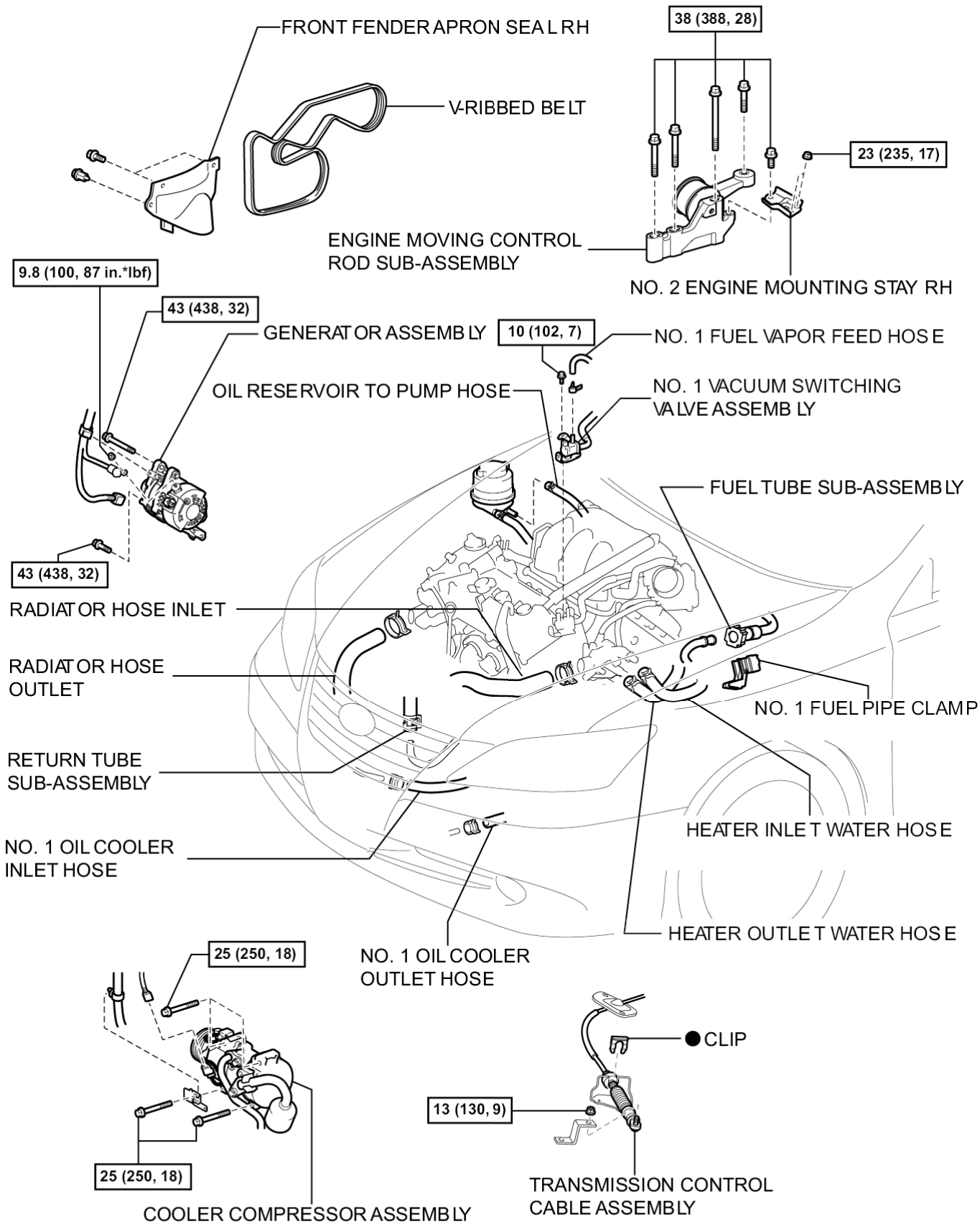
**[COMPONENTS](#)**

**[ILLUSTRATION](#)**



c

## ILLUSTRATION

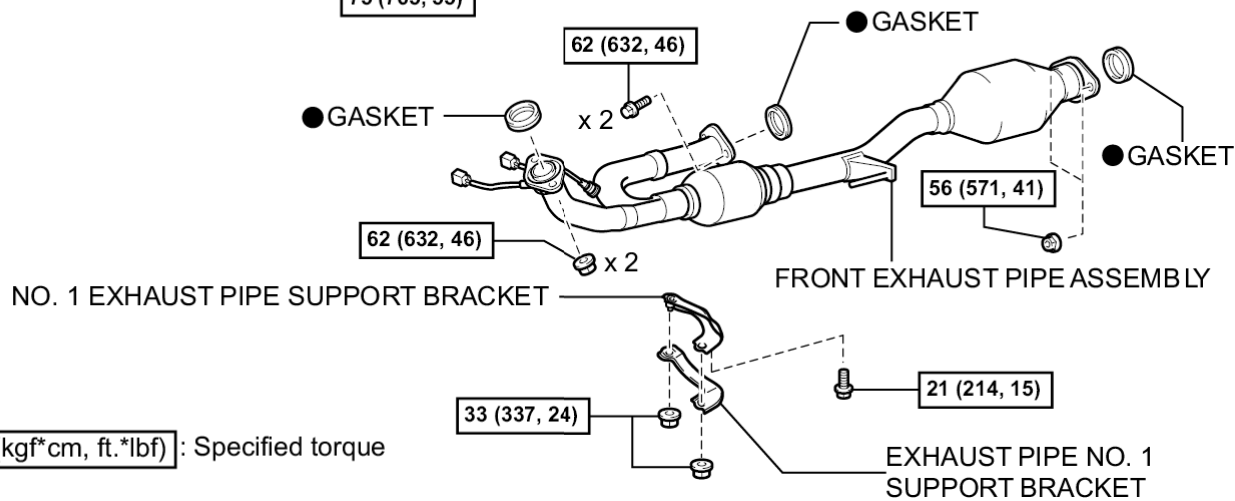
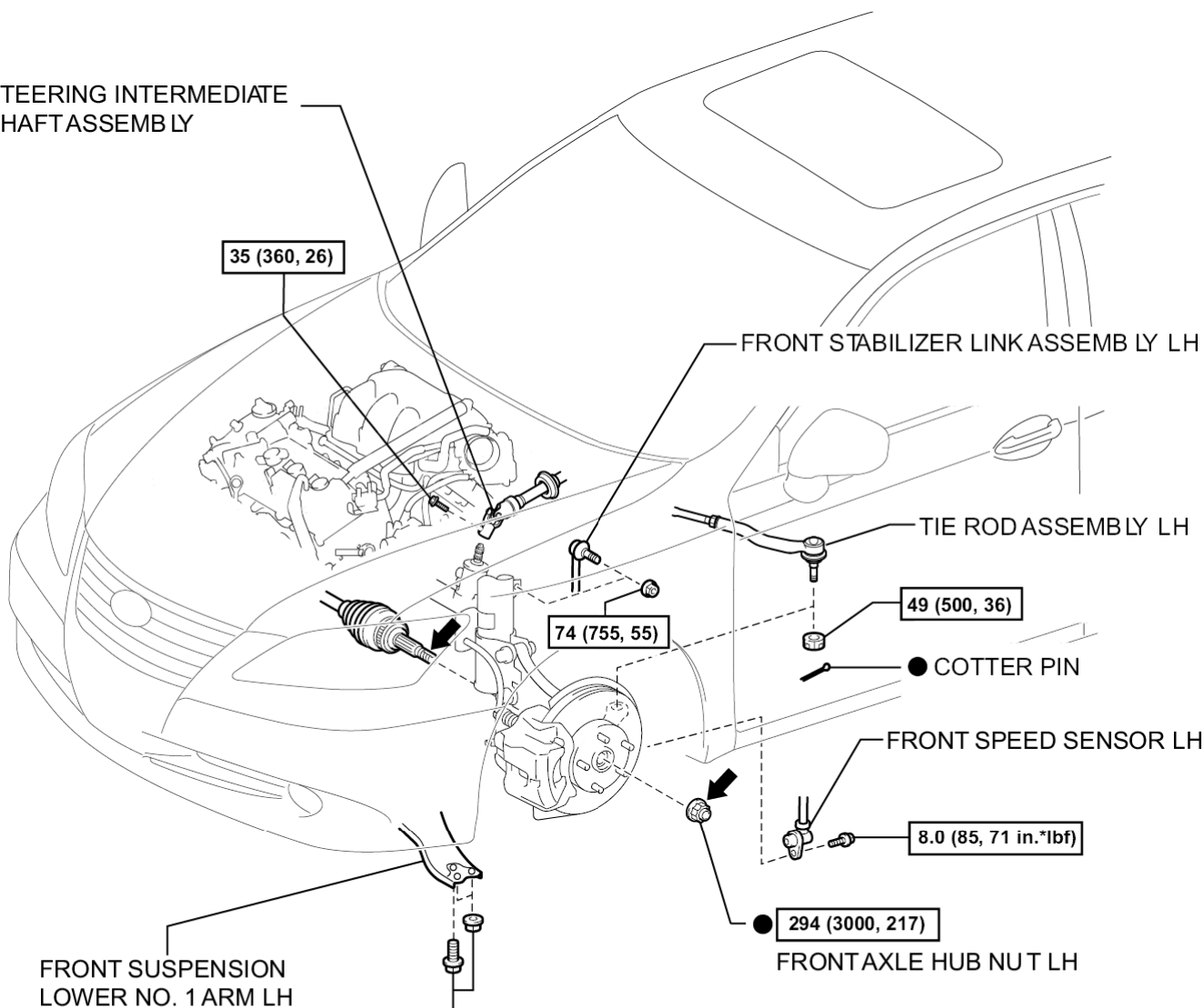


**N\*m (kgf\*cm, ft.\*lbf)** : Specified torque      ● Non-reusable part

c

**ILLUSTRATION**

STEERING INTERMEDIATE SHAFT ASSEMBLY



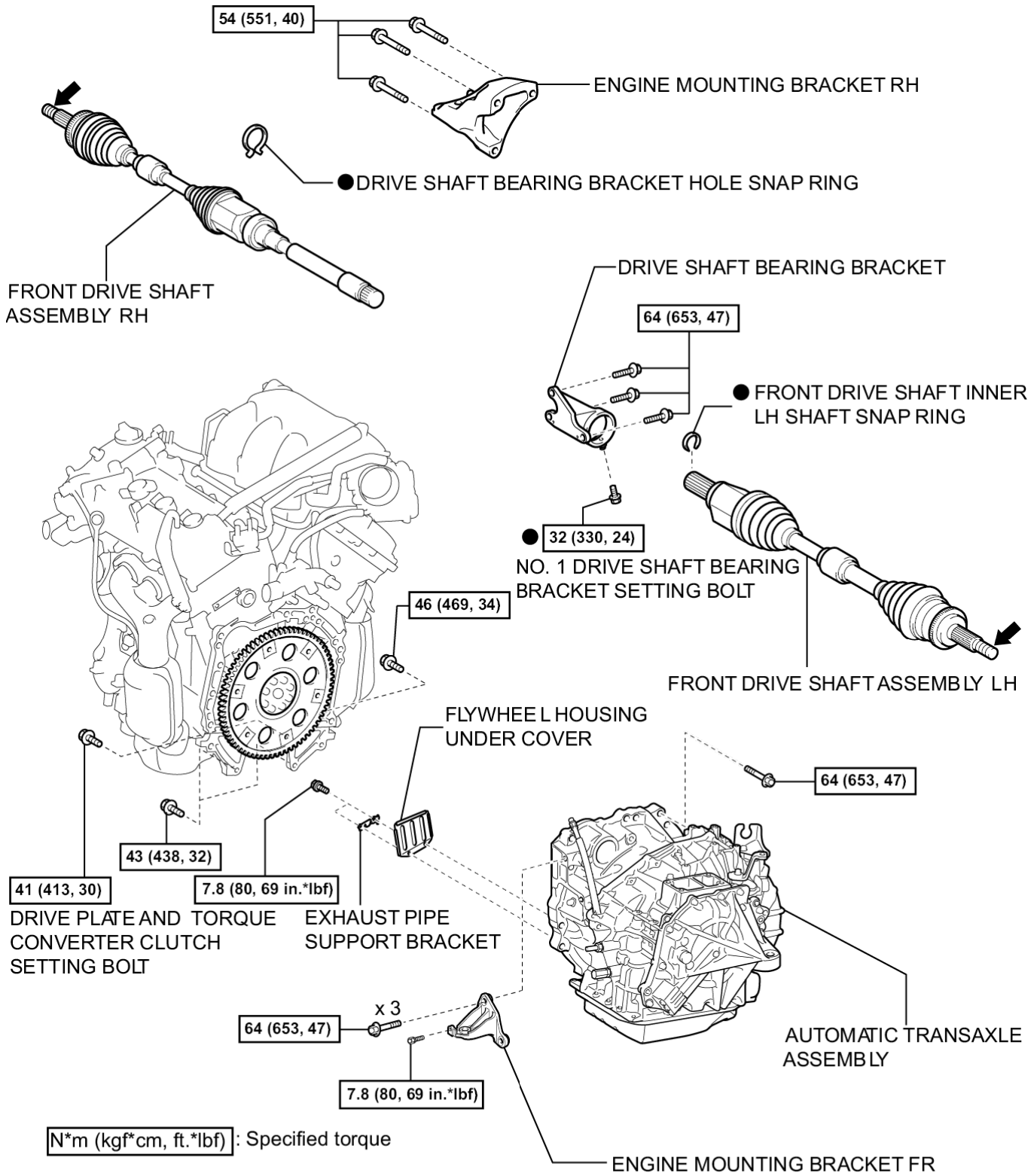
**N\*m (kgf\*cm, ft.\*lbf)**: Specified torque

● Non-reusable part

← Do not apply lubricants to the threaded parts

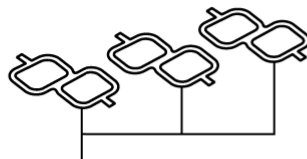
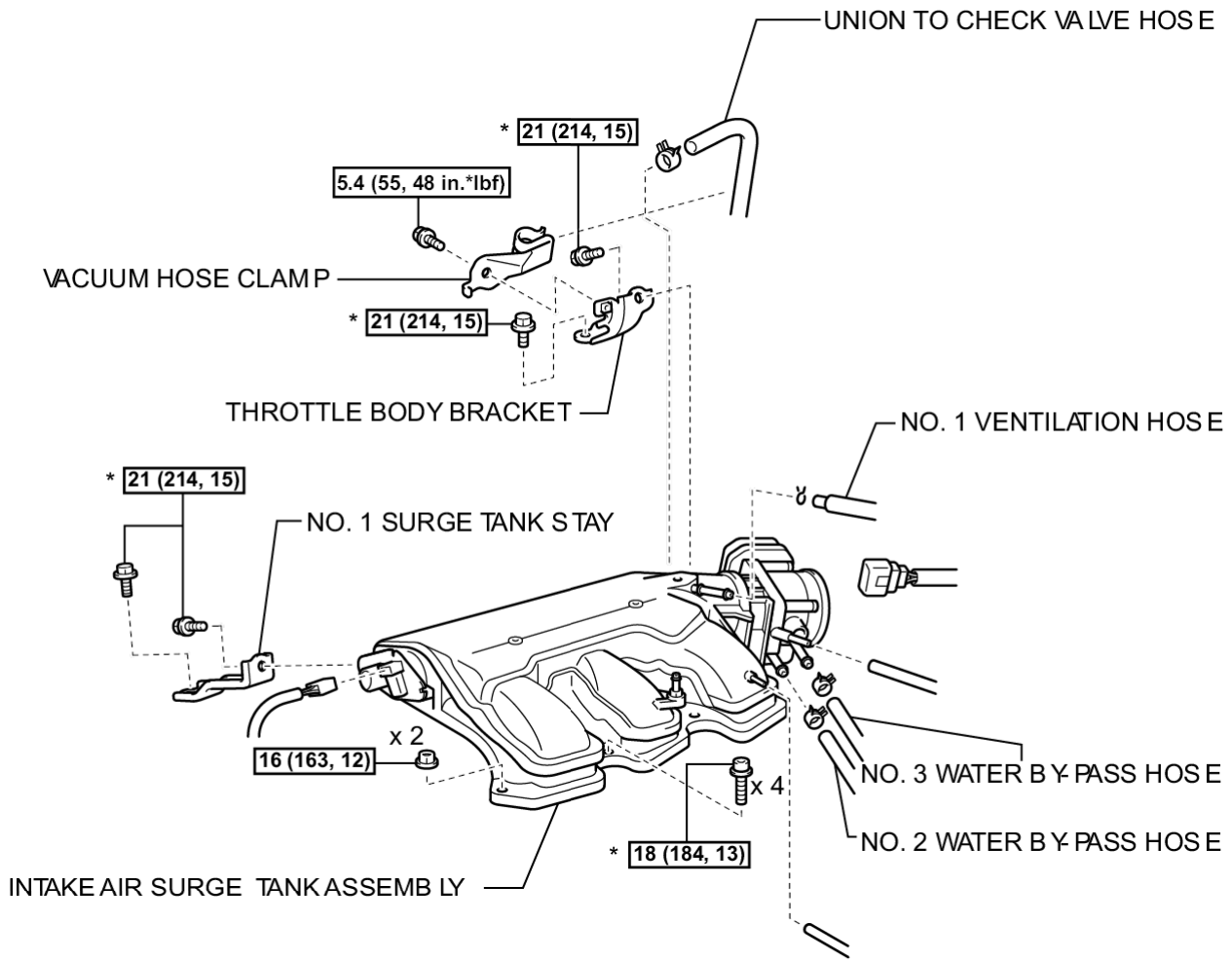
**ILLUSTRATION**



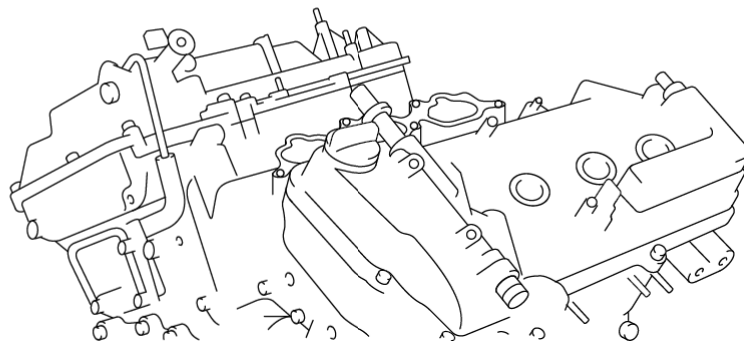


**ILLUSTRATION**





● AIR SURGE TANK TO INTAKE MANIFOLD GASKET

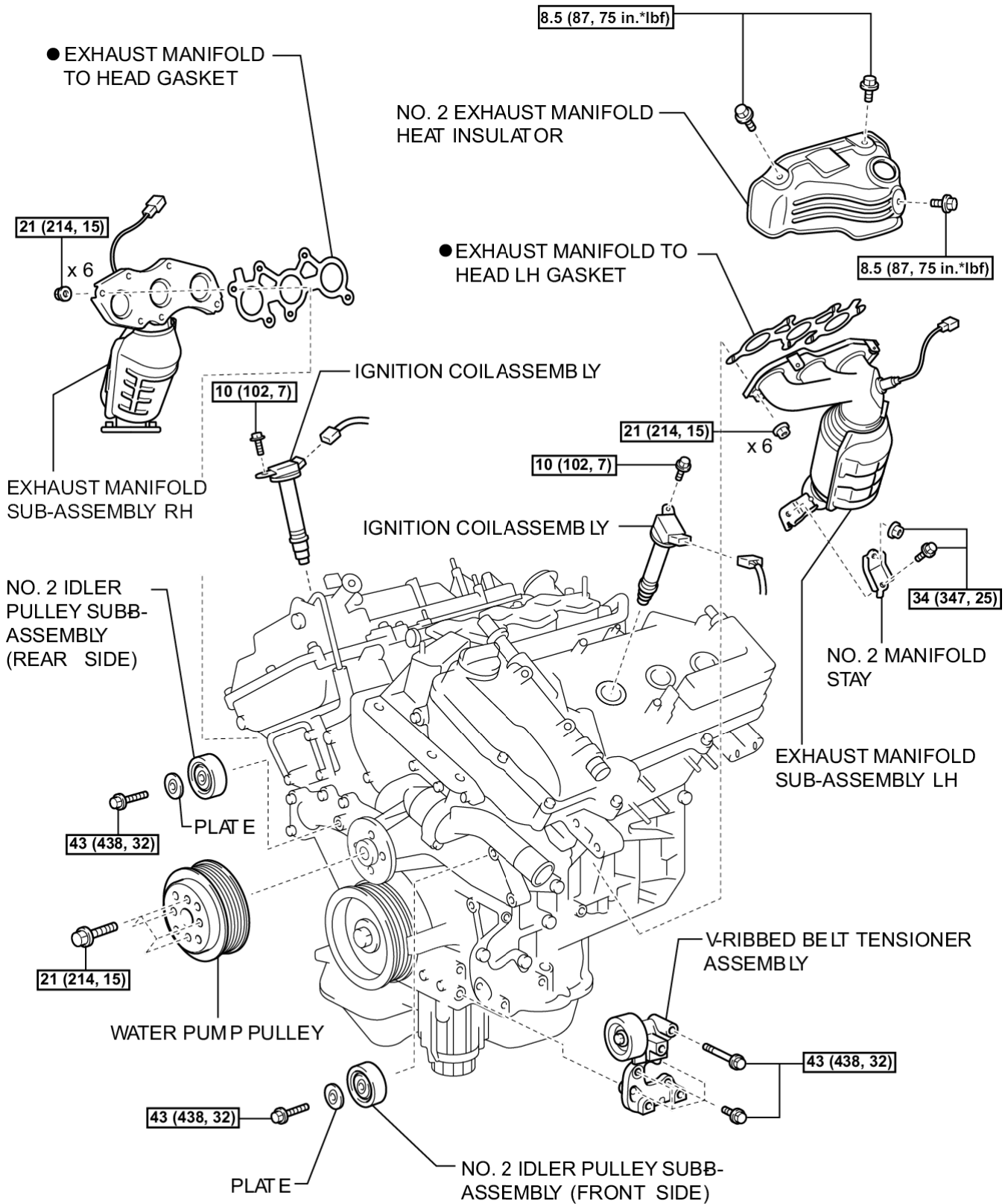


**[N\*m (kgf\*cm, ft.\*lbf)]**: Specified torque

● Non-reusable part

\* DO NOT apply oil

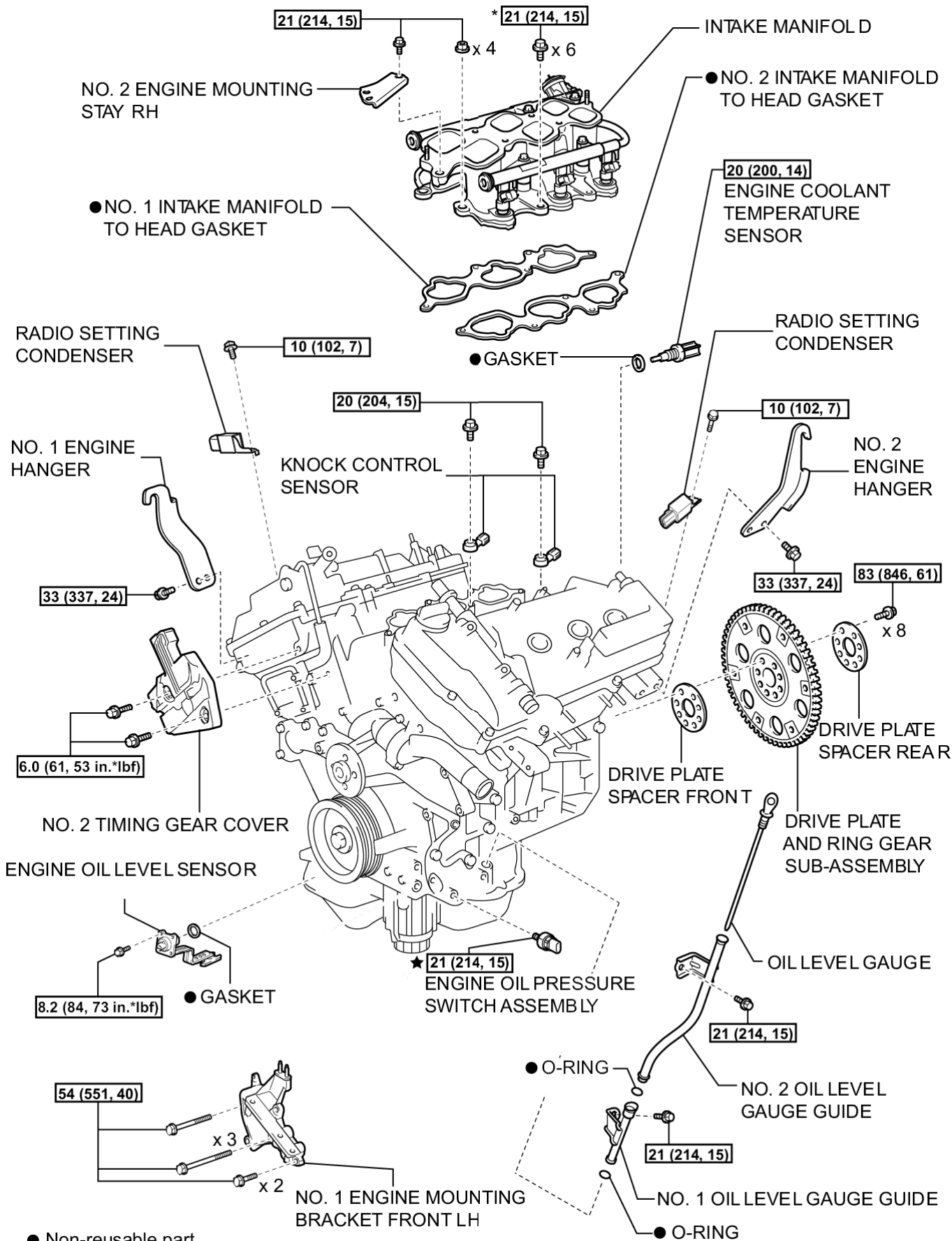
## ILLUSTRATION



**N\*m (kgf\*cm, ft.\*lbf)**: Specified torque

● Non-reusable part

## ILLUSTRATION



● Non-reusable part

**N\*m (kgf\*cm, ft.\*lbf)**: Specified torque

★ Precoated part

\* DO NOT apply oil

