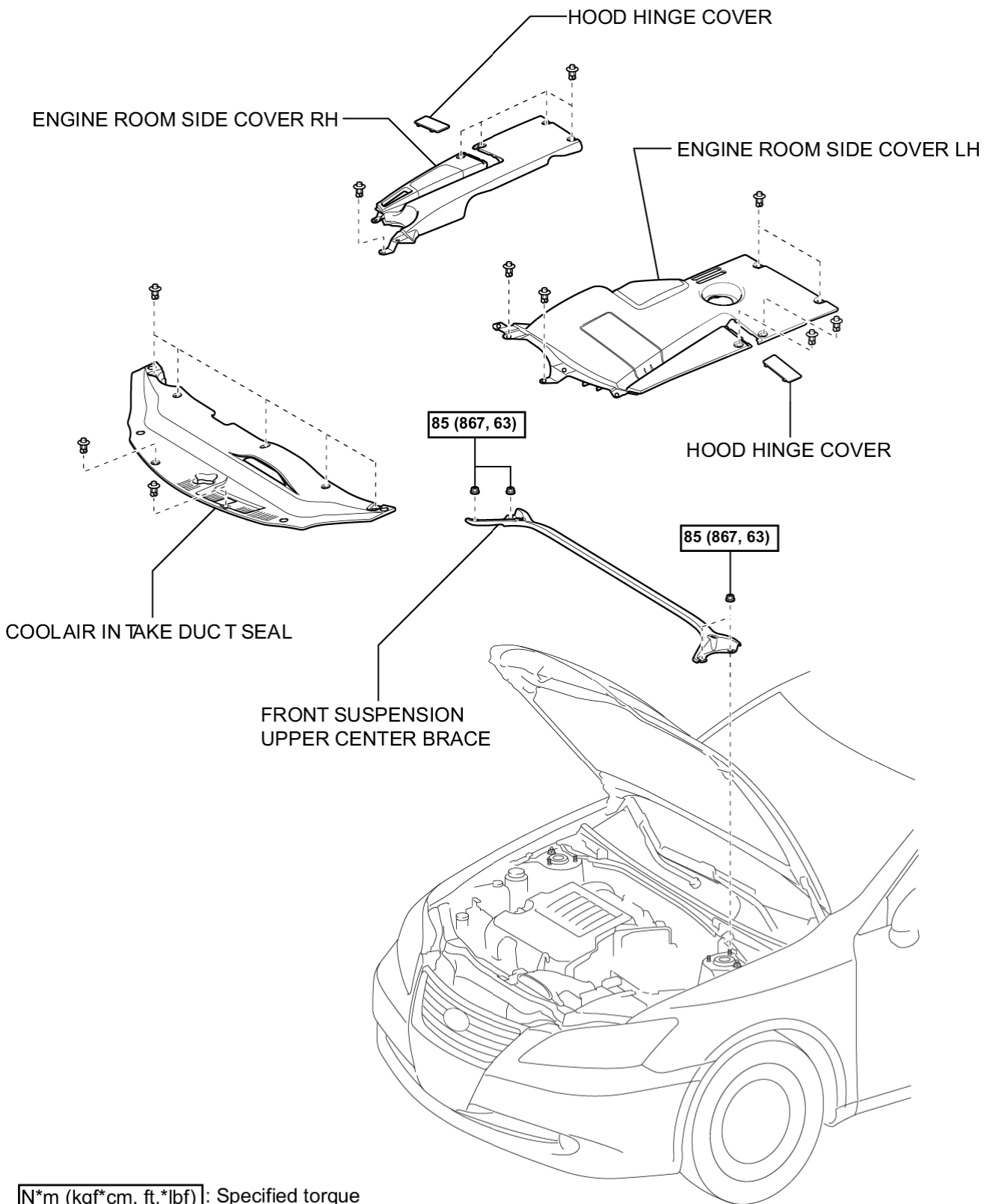


Last Modified: 7-13-2007		1.7 K
Service Category: Vehicle Interior	Section: Heating/Air Conditioning	
Model Year: 2008	Model: ES350	Doc ID: RM0000027DV000X
Title: AIR CONDITIONING: BLOWER UNIT: COMPONENTS (2008 ES350)		

[COMPONENTS](#)

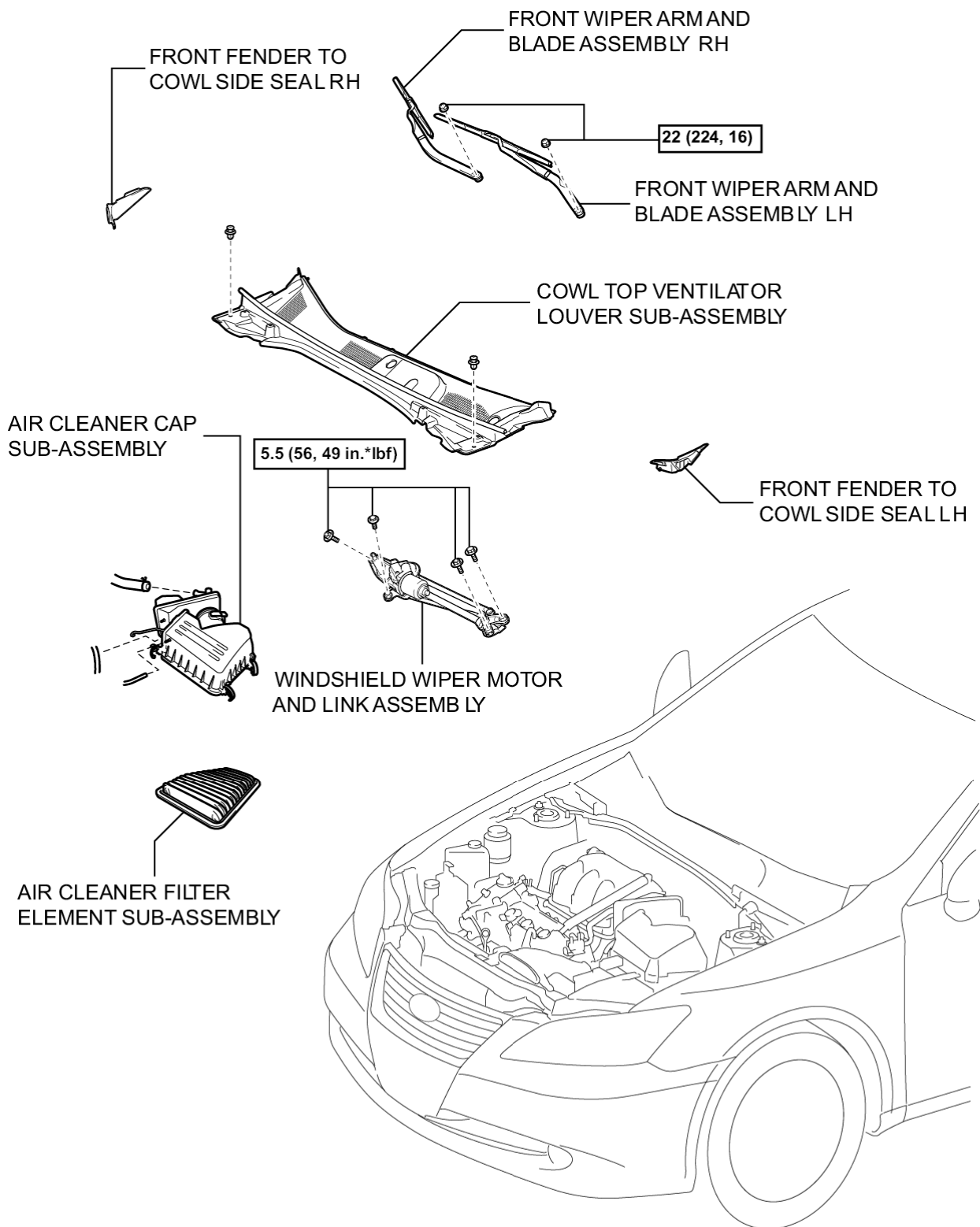
[ILLUSTRATION](#)



N*m (kgf*cm, ft.*lbf): Specified torque

c

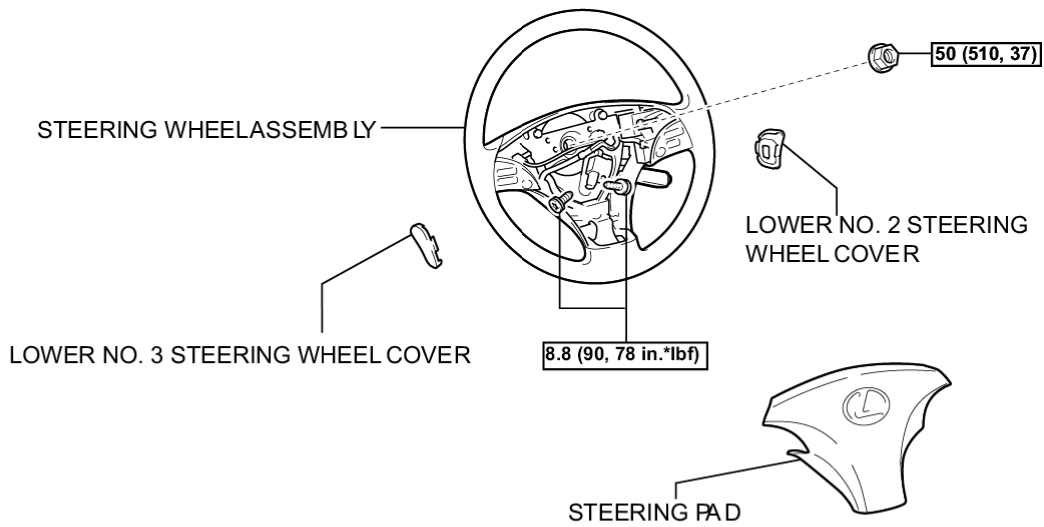
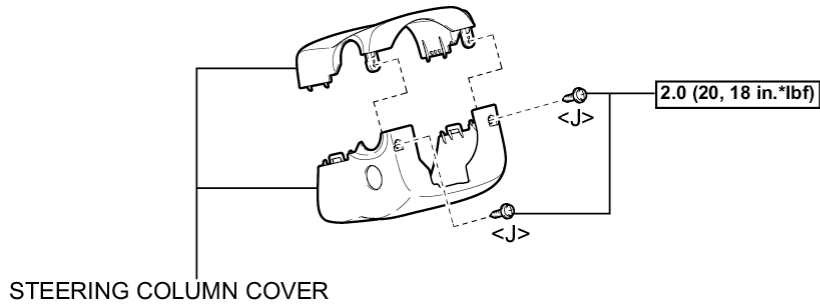
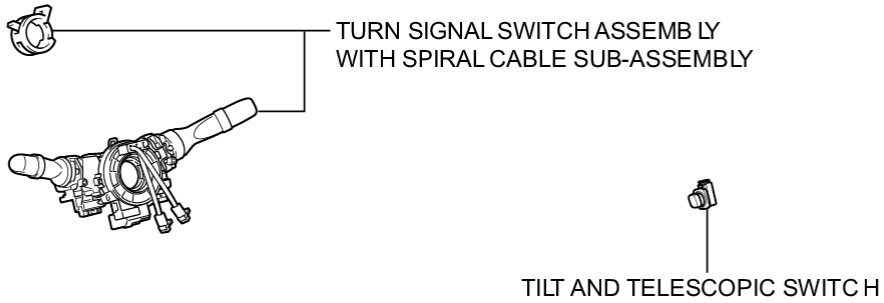
ILLUSTRATION



N*m (kgf*cm, ft.*lbf) : Specified torque

P

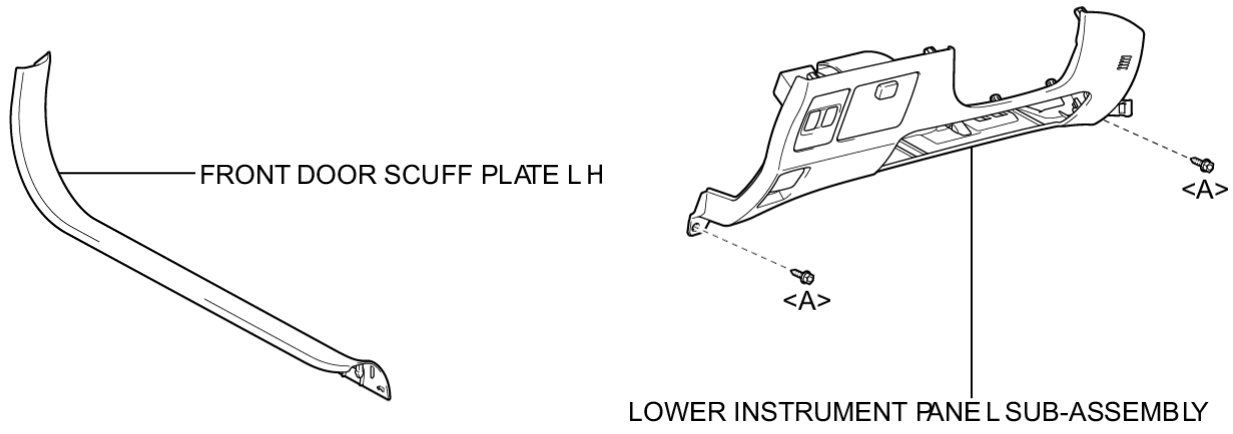
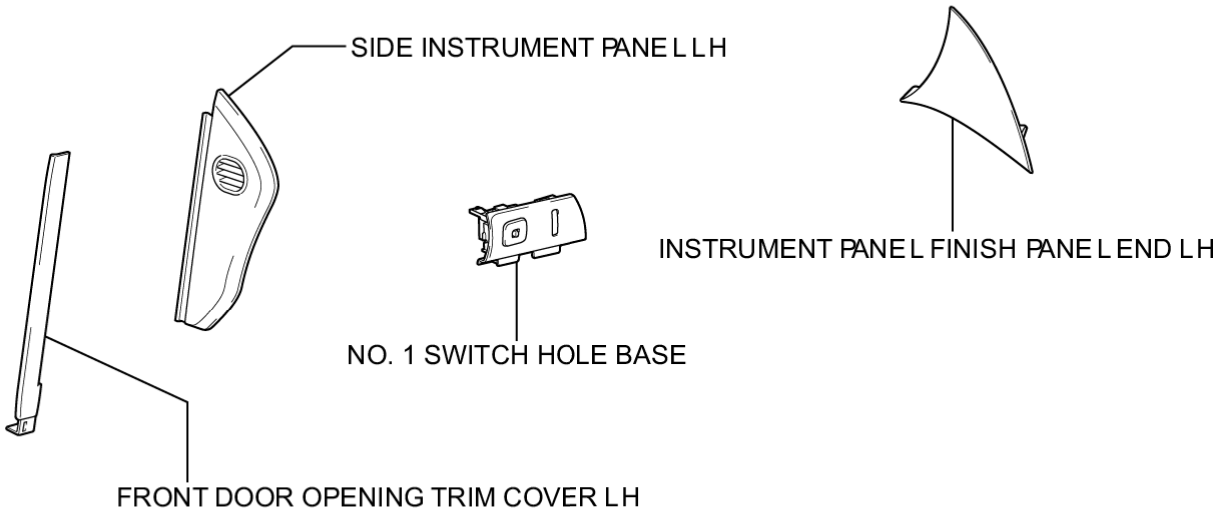
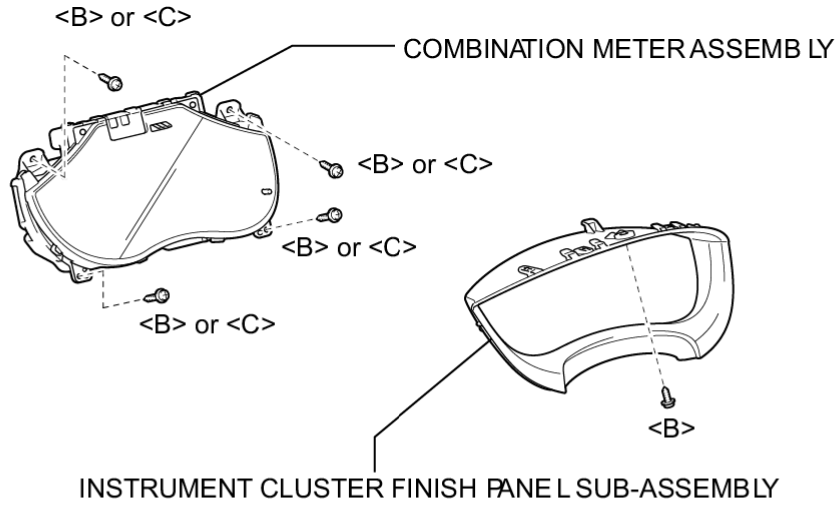
ILLUSTRATION

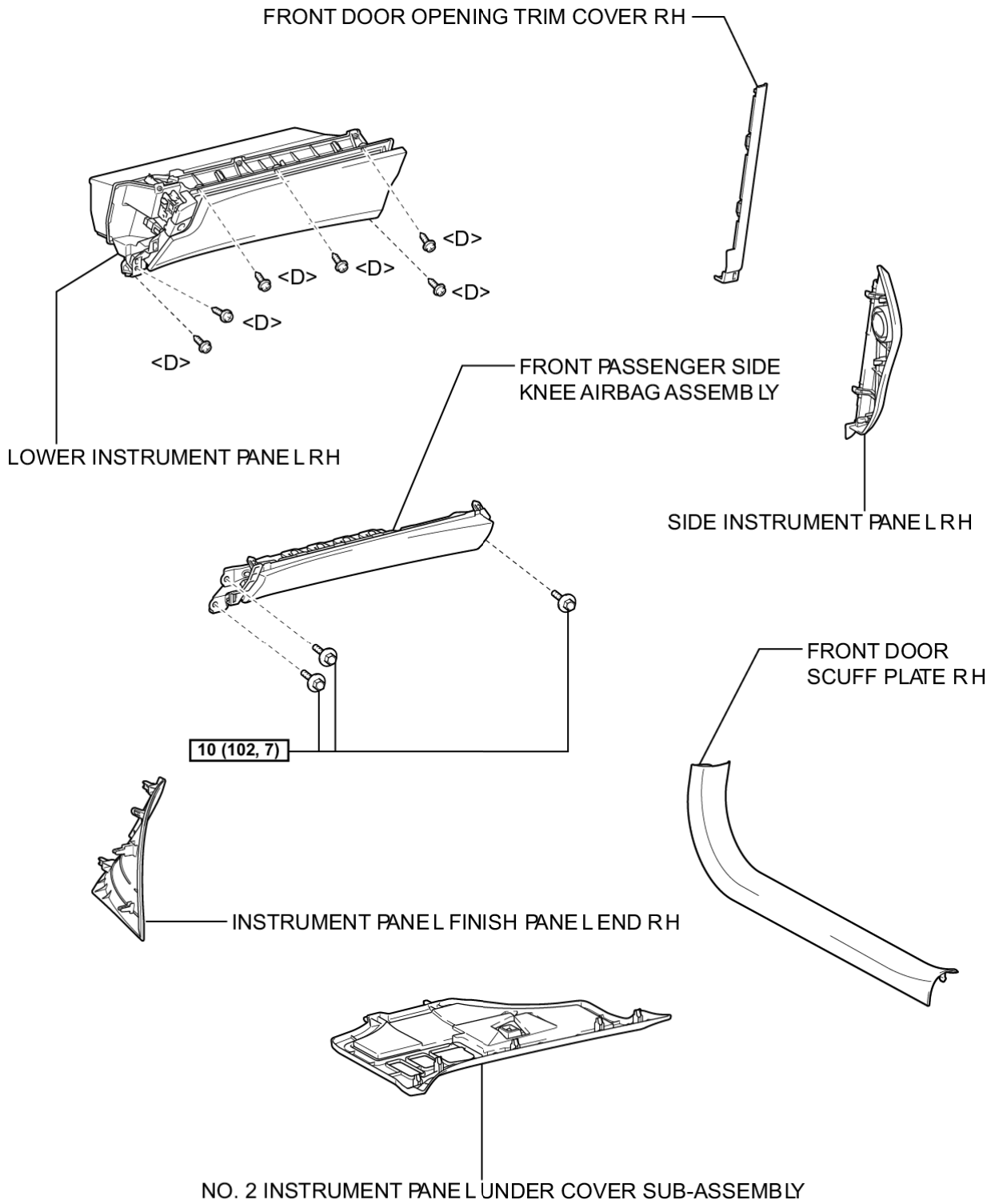


N*m (kgf*cm, ft.*lbf) : Specified torque

P

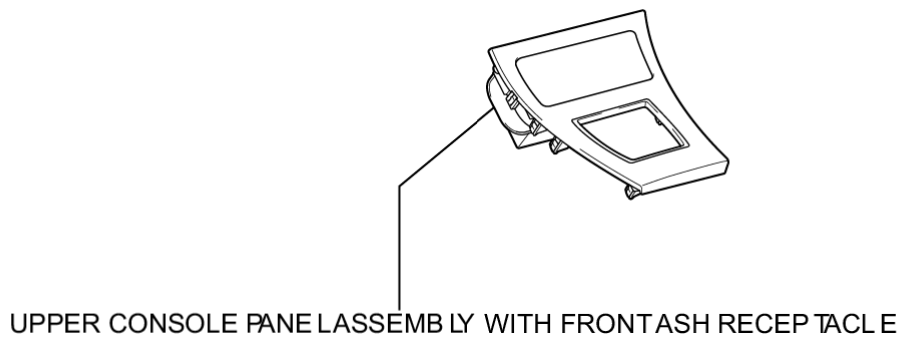
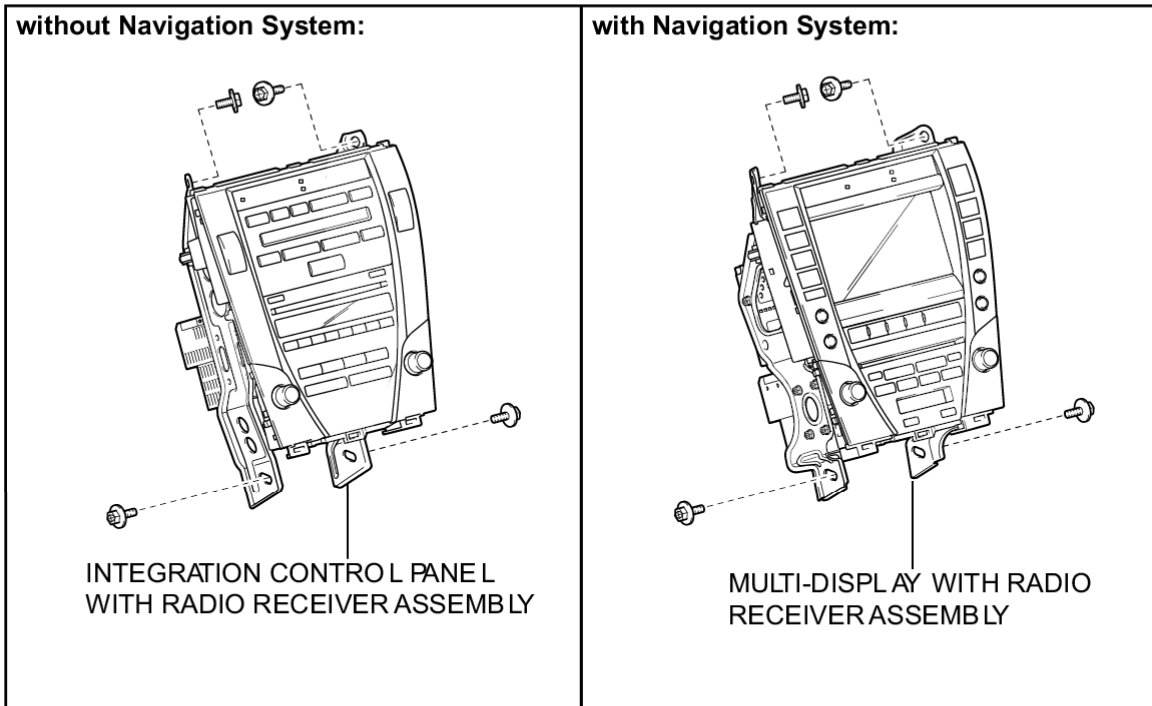
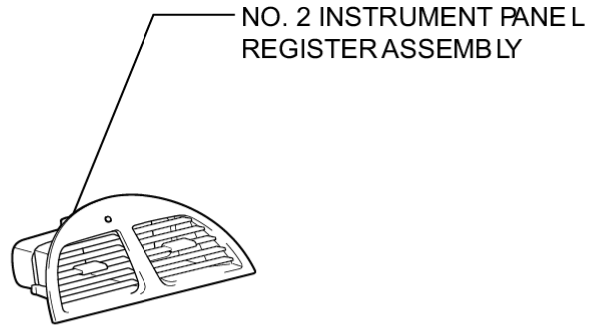
ILLUSTRATION

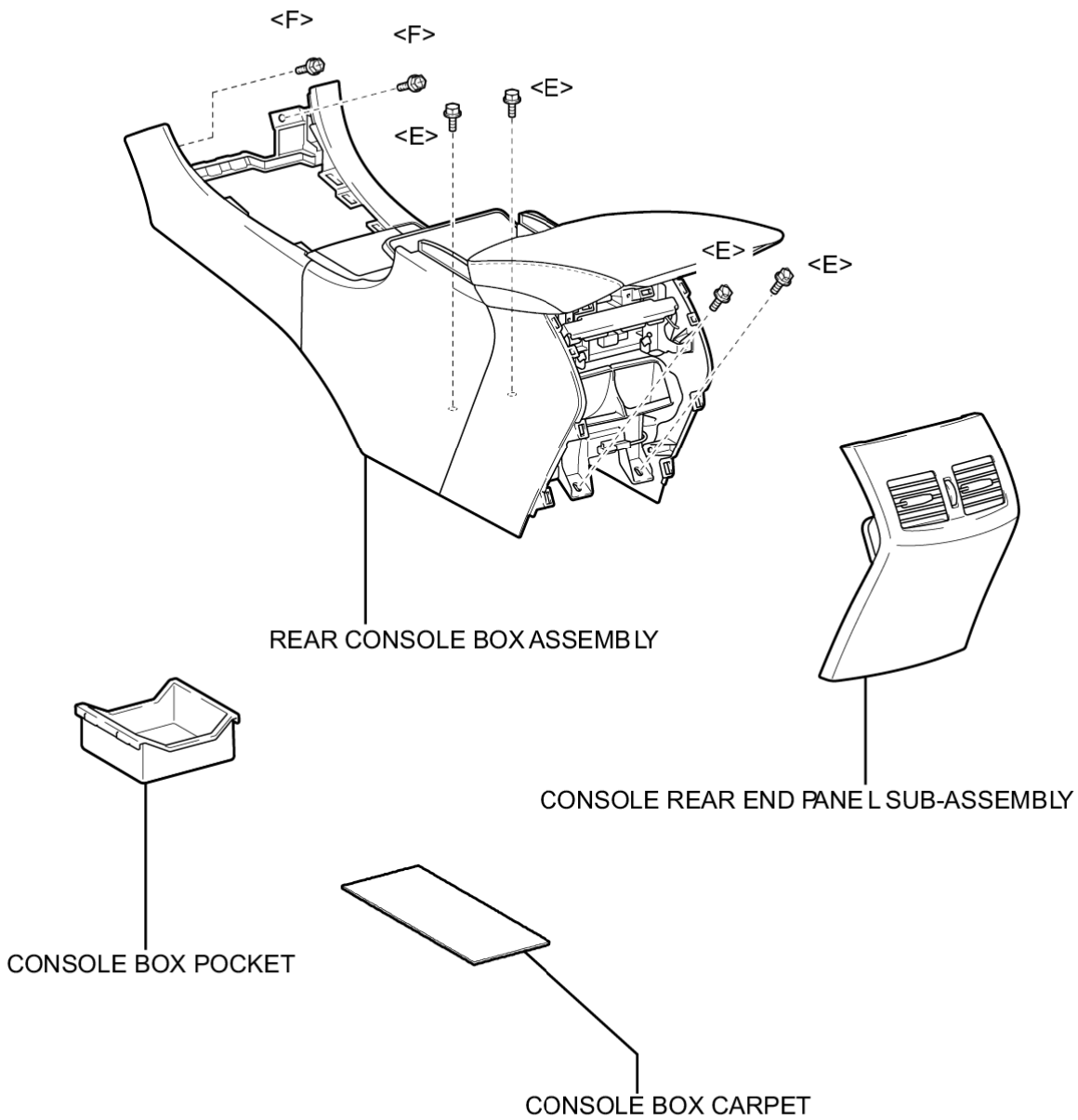
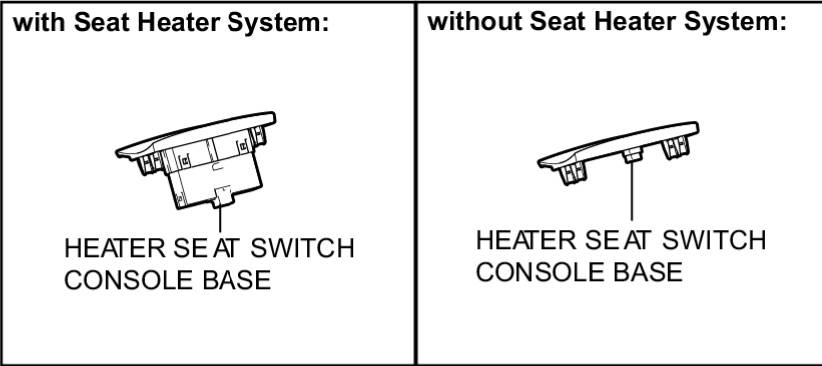




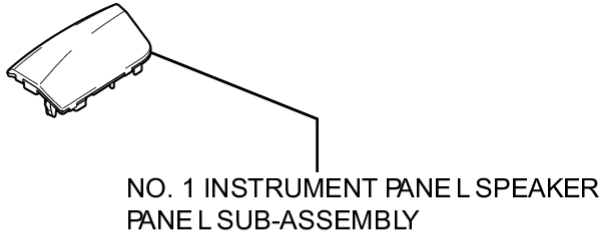
N*m (kgf*cm, ft.*lbf): Specified torque

ILLUSTRATION

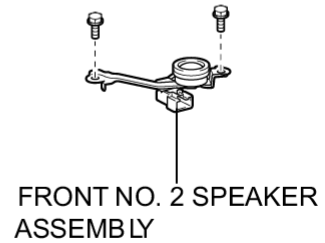
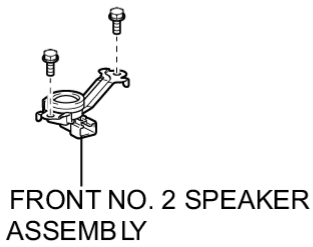




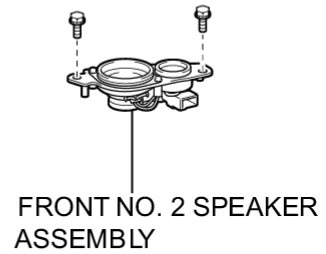
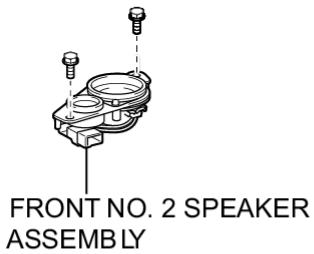
ILLUSTRATION

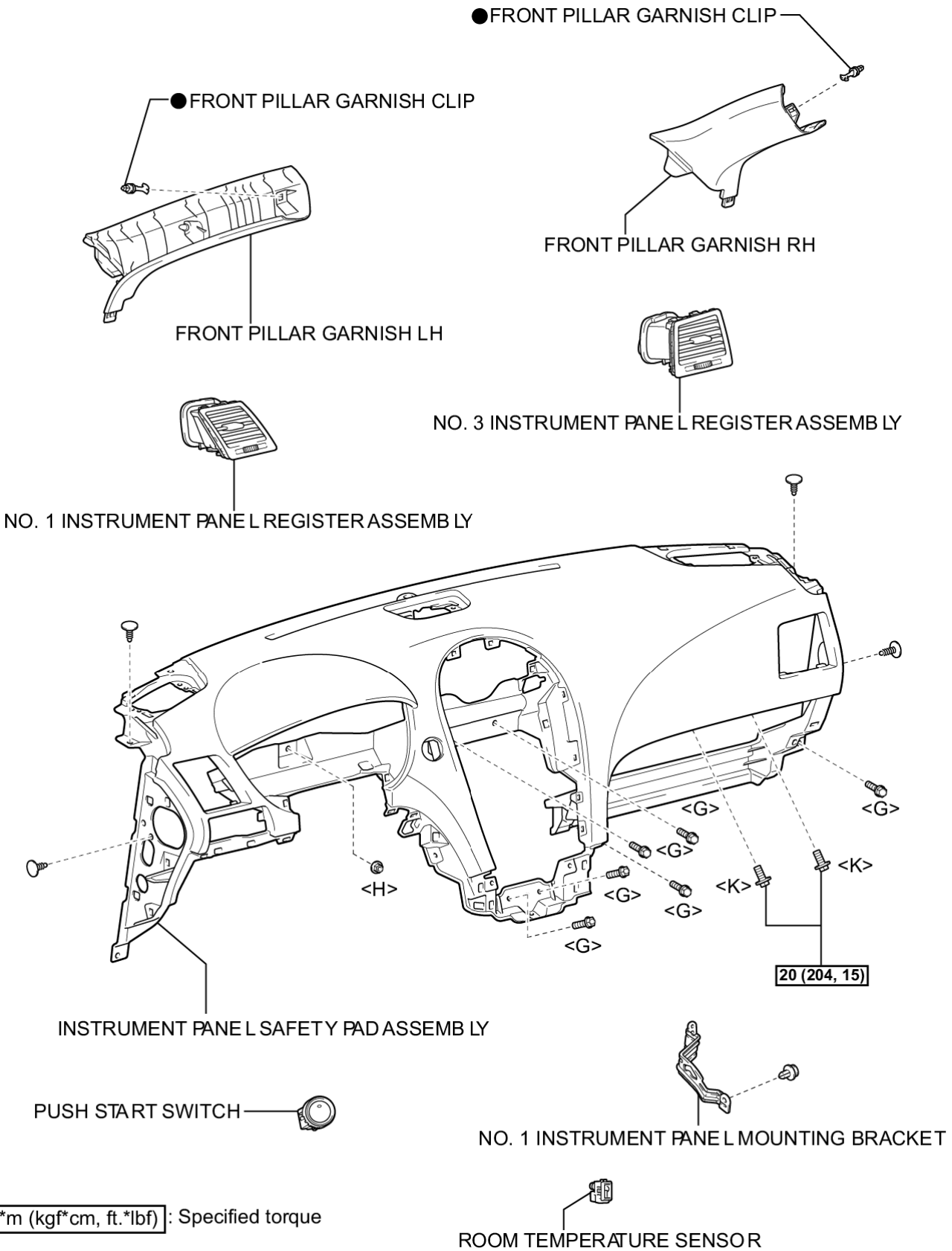


without Rear Header Speaker:

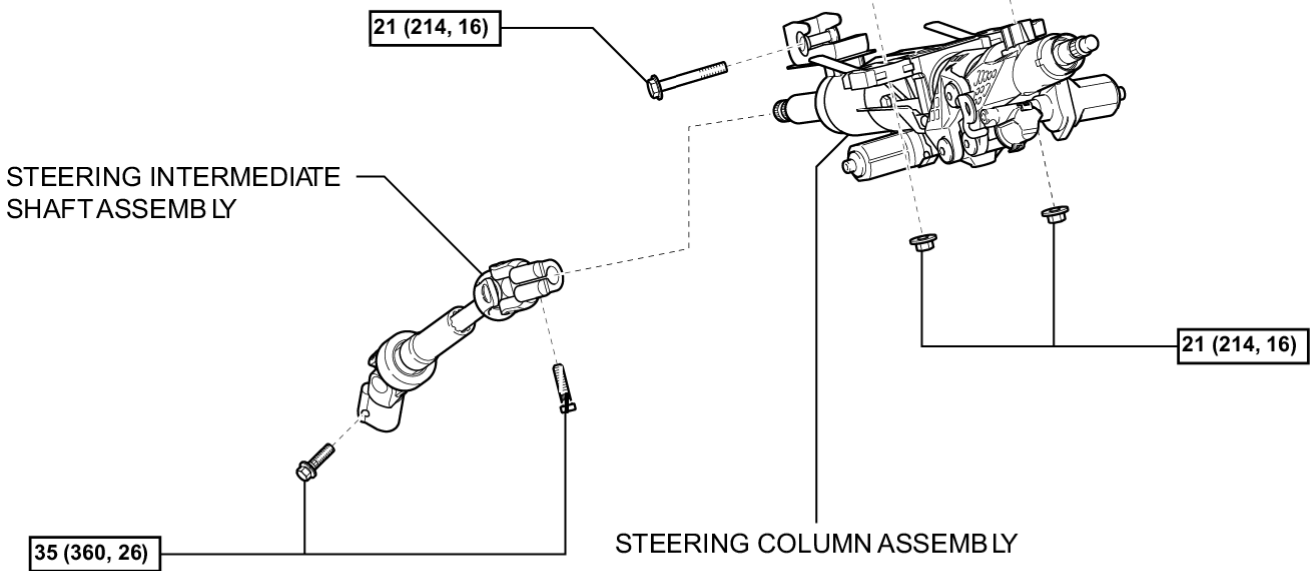
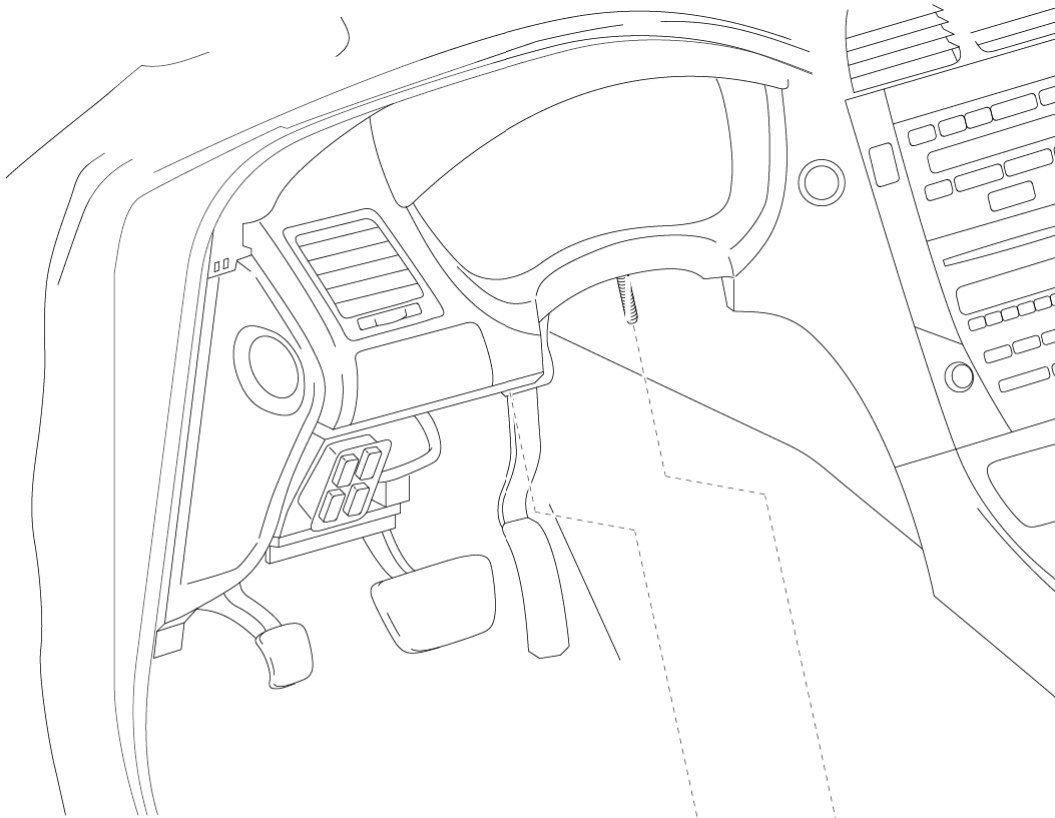


with Rear Header Speaker:



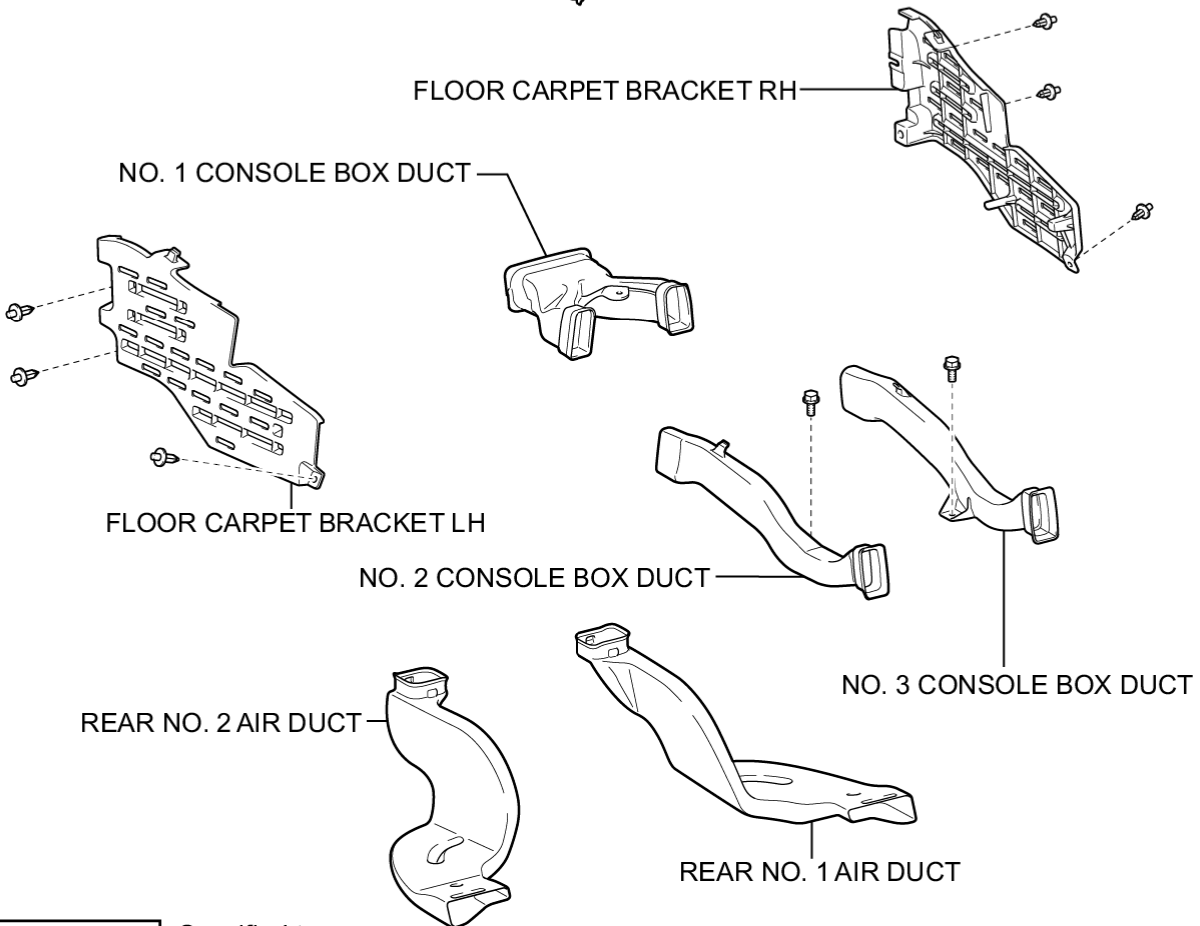
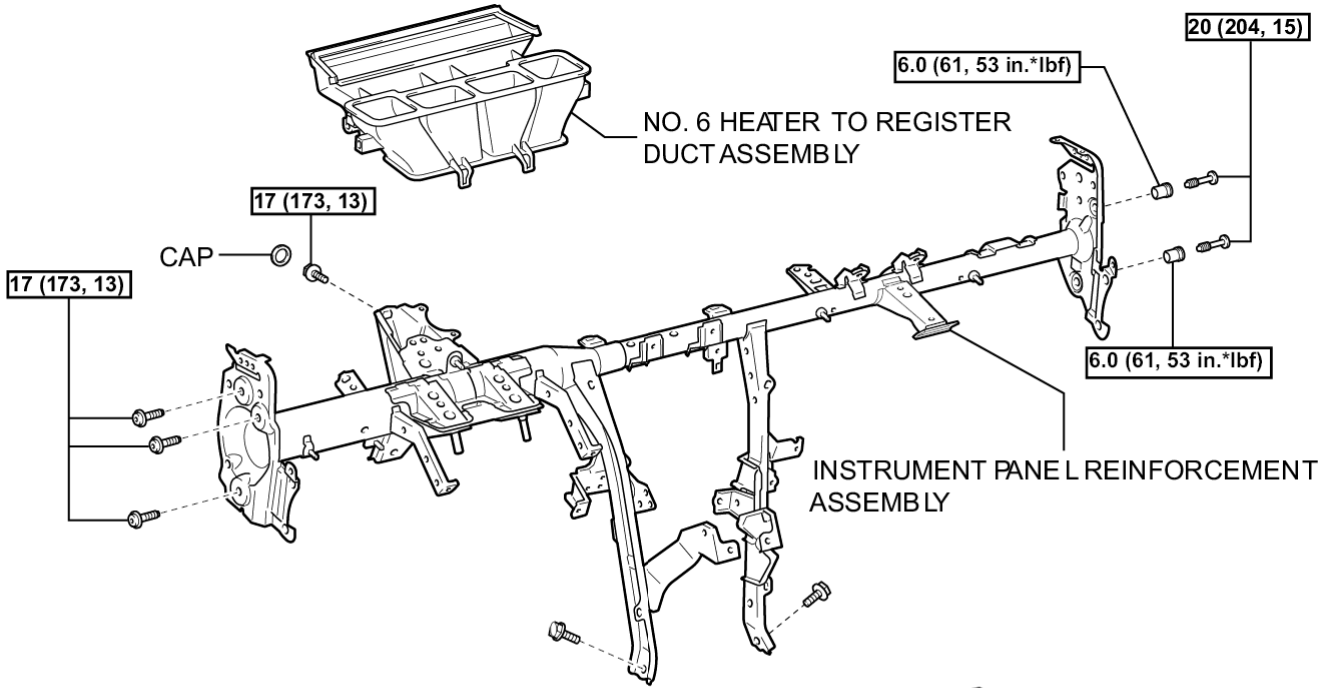


ILLUSTRATION



21 (214, 16) : Specified torque

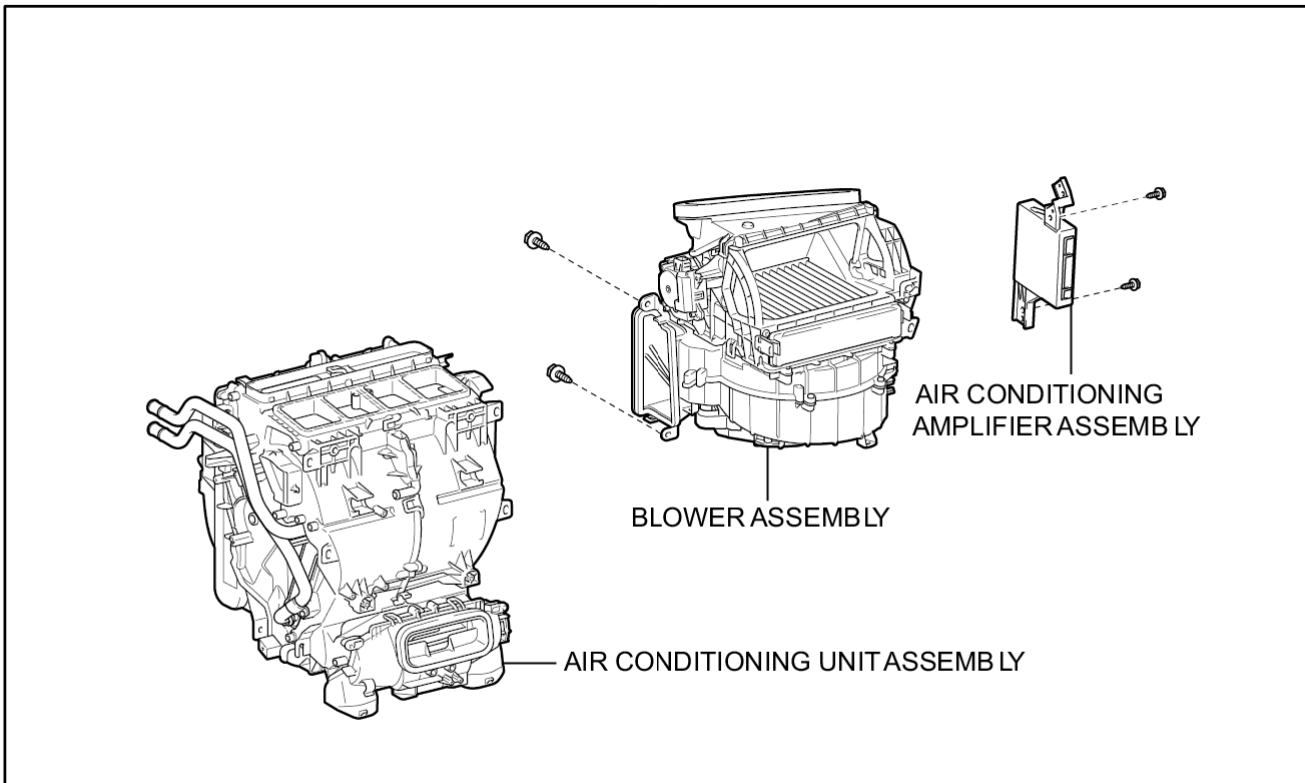
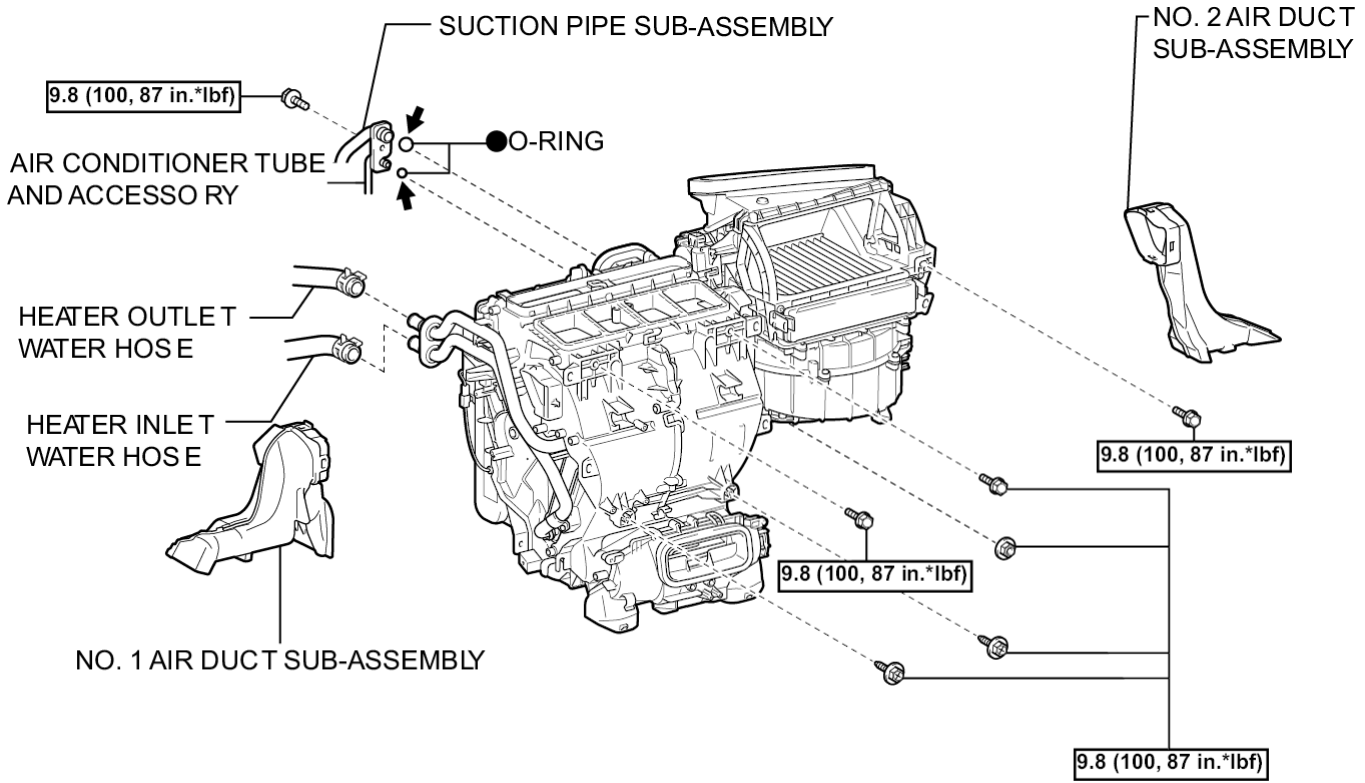
ILLUSTRATION



N*m (kgf*cm, ft.*lbf) : Specified torque

P

ILLUSTRATION



← Compressor oil ND-OIL 8 or equivalent

● Non-reusable part **9.8 (100, 87 in.*lbf)**: Specified torque

P

ILLUSTRATION

