

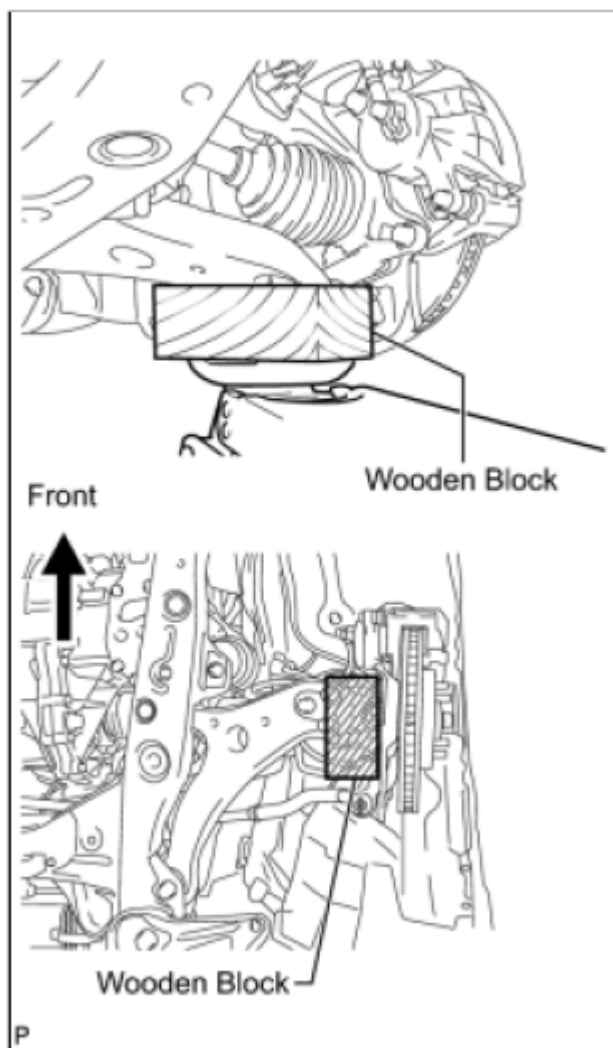
Service Category: Suspension	Section: Front Suspension
Model Year: 2000	Model: ES300
Title: SUSPENSION: FRONT SHOCK ABSORBER: REMOVAL	

REMOVAL

HINT:

Use the same procedures for the RH side and the LH side.
The procedures listed below are for the LH side.

1. REMOVE FRONT WHEEL
2. SEPARATE FRONT STABILIZER LINK ASSEMBLY



(a) Support the front No. 1 suspension lower arm with a jack using a wooden block to avoid damage.



(b) Remove the nut and separate the front stabilizer link assembly from the front shock absorber.

3. REMOVE FRONT SHOCK ABSORBER WITH COIL SPRING



(a) Loosen the lock nut of the front shock absorber with coil spring.

NOTICE:

Do not remove the lock nut.

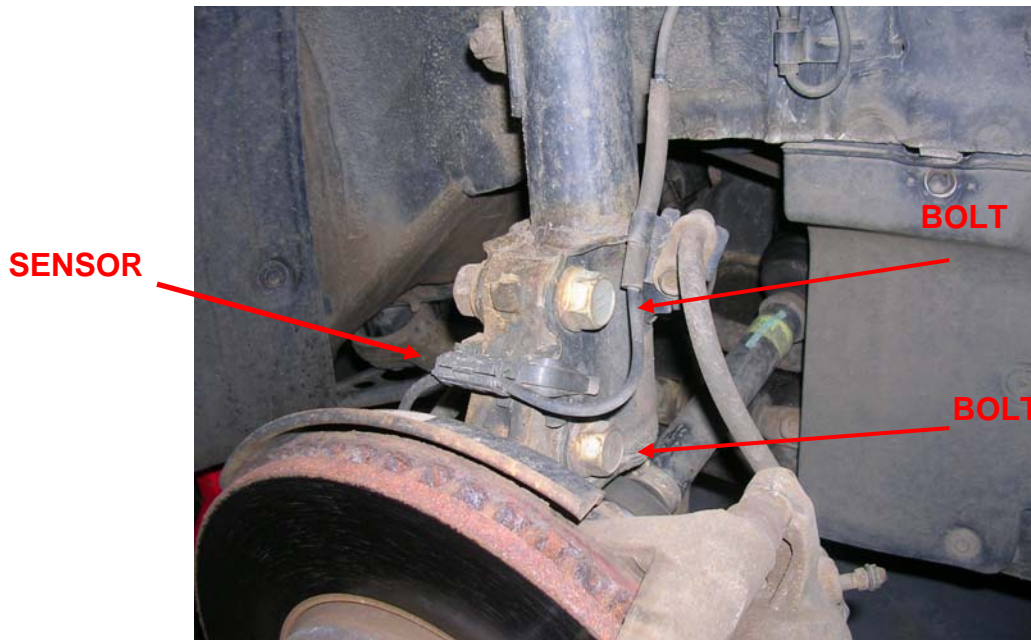
Only loosen the nut when disassembling the front shock absorber with coil spring.



(b) Remove the bolt and disconnect the front flexible hose and front speed sensor wire harness from the front shock absorber with coil spring.

NOTICE:

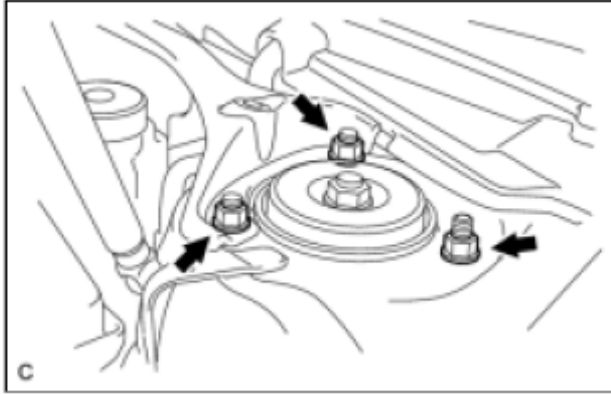
Be sure to remove the front speed sensor from the front shock absorber with coil spring.



(c) Remove the 2 nuts on the lower side of the front shock absorber with coil spring.

NOTICE:

When removing the nuts, keep the bolts from rotating.
Keep the bolts inserted to secure the front axle assembly.



- (d) Remove the 3 nuts on the upper side of the front shock absorber with coil spring.
- (e) Lower the front axle assembly, and remove the 2 bolts on the lower side of the front shock absorber.
- (f) Remove the front shock absorber with coil spring.

NOTICE:

Make sure that the front speed sensor is disconnected from the front shock absorber with coil spring.